



Full Name

MARYLAND FOREST SERVICE

Financial & Technical Assistance Opportunities





## LANDOWNERS & PRIVATE PROPERTY

---

- Conservation Reserve Enhancement Program (CREP)
- Woodland Incentive Program (WIP)
- Environmental Quality Incentive Program (EQIP)
- Healthy Forests, Healthy Waters (HFHW)
- Backyard Buffers Program (BYB)
- Maryland Agricultural Water Quality Cost-Share Program (MACS)

## COMMUNITIES & PUBLIC LAND

---

- Tree-Mendous Maryland
- Marylanders Plant Trees
- MUCFC Grants Program
- Community Forestry Catalyst Fund (CF2)

## LOCAL INITIATIVES

---

- Turf to Trees Program, Baltimore County
- Stream ReLeaf, Frederick County
- Tree Montgomery
- Live Green Howard Tree Programs
- Chesapeake Bay Foundation farm stewardship grants
- And many more! (often for MS4 stormwater permits)

## ADDITIONAL RESOURCES & GRANTS

---

- John S. Ayton State Tree Nursery
- Gift of Trees
- MDOT Urban Forestry grants
- Chesapeake Bay Trust Urban Trees grants





# Conservation Reserve Enhancement Program (CREP)

**Administered by:** USDA Farm Service Agency,  
technical support from NRCS & Maryland DNR

**Summary:** CREP helps agricultural landowners establish riparian forest buffers, grass waterways, and wildlife habitat by providing financial incentives, including annual rental payments and cost-share for planting.

**Eligibility:** Landowners commit to 10–15 years of conservation while maintaining land ownership.

[More info on CREP](#)





## Woodland Incentive Program (WIP)

**Administered by:** DNR Maryland Forest Service

**Summary:** Offers up to 65% cost-share assistance for tree planting, site preparation, stewardship plans, pre-commercial thin, and timber stand improvement to enhance forest productivity and stewardship, can be piggybacked with EQIP to 90%.

**Eligibility:** Private landowners with 5–1,000 forested acres who commit to maintaining practices for at least 15 years.

[More info on WIP](#)





# Environmental Quality Incentive Program (EQIP)

**Administered by:** USDA Natural Resources Conservation Service (NRCS)

**Summary:** Provides financial and technical assistance for conservation practices, including tree planting, reforestation, erosion control, and wildlife habitat improvement. (complementary to Conservation Stewardship Program for multi-year projects)

**Eligibility:** Farmers, ranchers, and private forest landowners with eligible land and conservation goals, tied to specific “resource concerns”

[More info on EQIP](#)





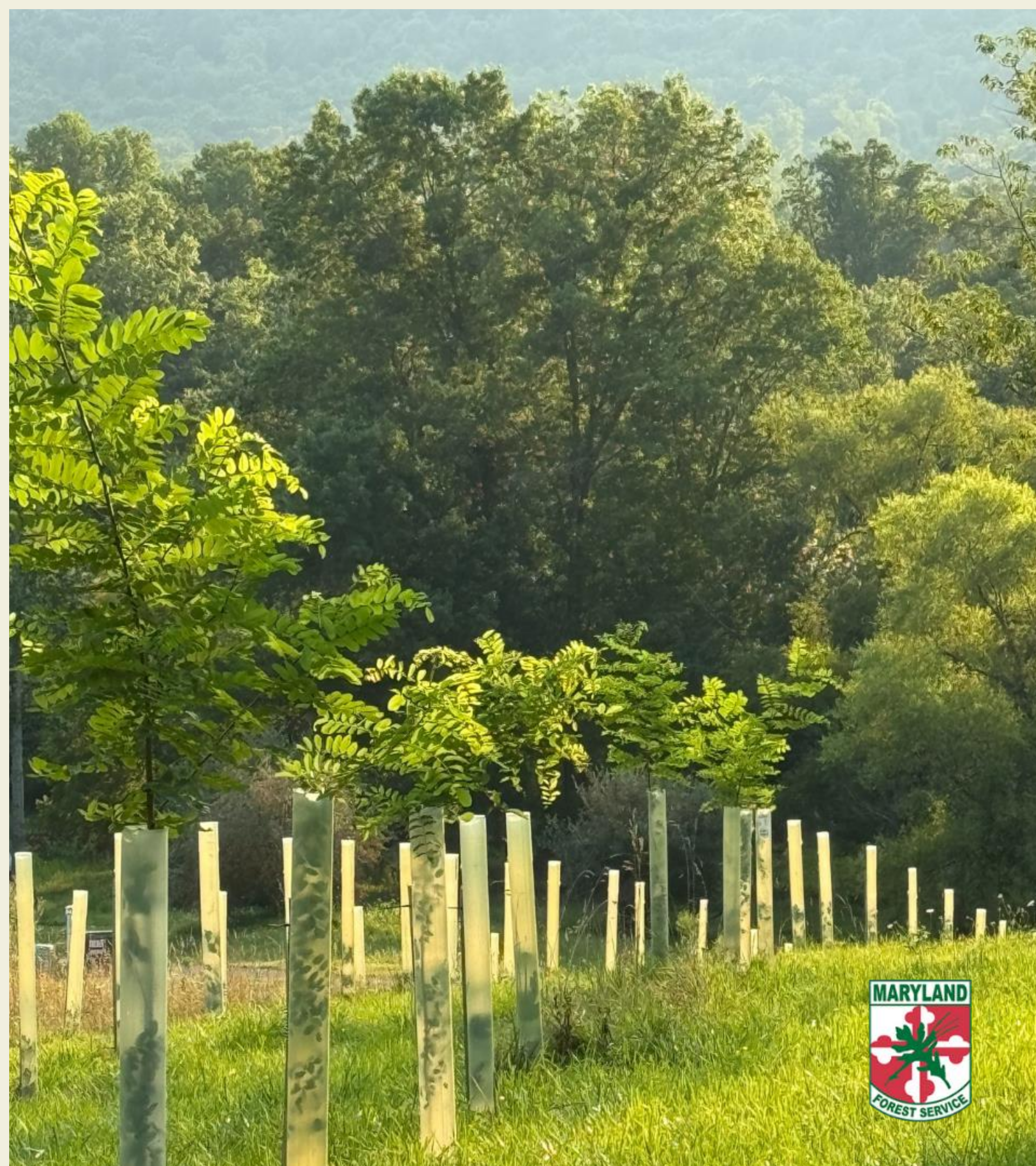
## Healthy Forests, Healthy Waters

**Administered by:** Alliance for the Chesapeake Bay, Maryland Forestry Foundation, Maryland Forest Service (similar program with W MD RC&D and MFS in Garrett, Allegany, Washington)

**Summary:** Provides free tree planting projects (1+ acre, less for buffer sites); Includes labor, materials, and maintenance for 2 to 3 years. Participants receive technical support and monitoring. From DNR Chesapeake and Coastal Bays Trust Fund.

**Eligibility:** Open landowners willing to convert land to forest and maintain it for a minimum of 15 years (formerly 10 years before 5 Million Trees).

[More info on HFHW](#)





# Backyard Buffers Program

**Administered by:** Maryland Forest Service & Local Forestry Boards, other partners

**Summary:** Provides a free “Buffer in a Bag” with 15–30 native tree and shrub seedlings to homeowners for creating streamside buffers that reduce erosion and improve water quality.

**Eligibility:** Homeowners with land bordering or near waterways; process, partners, and eligibility can vary by county

[More info on BYB](#)



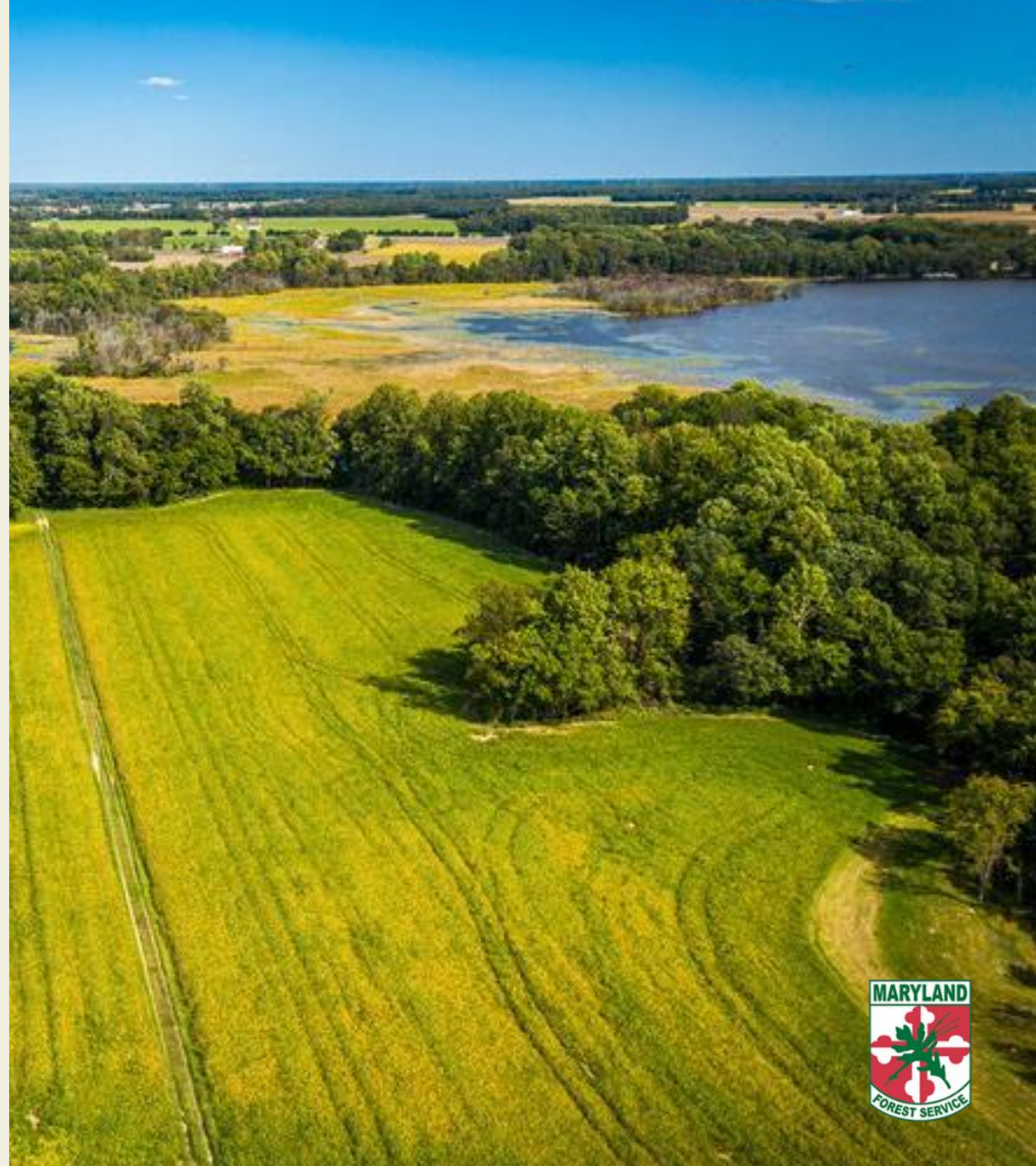


# Maryland Agricultural Water Quality Cost-Share Program (MACS)

**Administered by:** Maryland Department of  
Agriculture

**Summary:** Provides cost-share to farmers to install best management practices (BMPs) that reduce soil erosion, manage nutrients, and protect water quality in streams, rivers, and the Chesapeake Bay. Usually partnered with federal CREP or EQIP, 50% cost-share, priority practices like buffers can be higher

**Eligibility:** Maryland farmers, including landowners and tenants, implementing eligible BMPs.





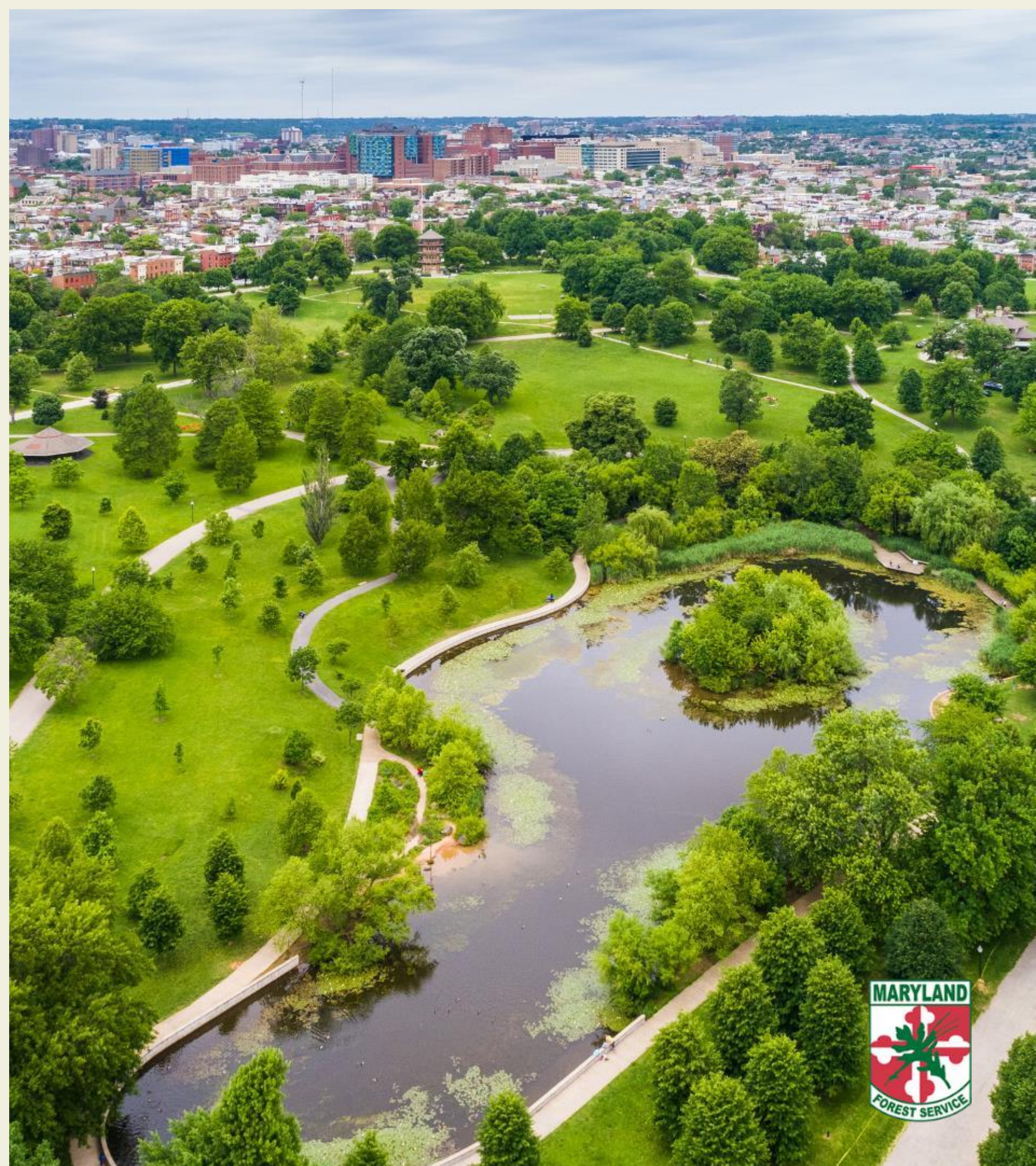
# Tree-Mendous Maryland

**Administered by:** Maryland Forest Service

**Summary:** Supplies low-cost native trees for planting on public lands such as parks, schools, and community properties. Supports community-led efforts to improve local canopy.

**Eligibility:** Government agencies, schools, nonprofits, and civic groups planting on public or community-owned land.

[More info on Tree-Mendous](#)





# Marylanders Plant Trees

**Administered by:** Maryland Forest Service

**Summary:** Offers a \$25 coupon for the purchase of native trees (\$50+ retail value) from participating nurseries for planting on private residential property.

**Eligibility:** Maryland residents planting on their own land.

[More info on MPT Coupons](#)





# MUCFC Grants Program

**Administered by:** Maryland Urban and Community Forest Council

**Summary:** Grants up to \$1,000 for tree planting and forestry education projects on public or community spaces. Encourages local engagement in urban forestry.

**Eligibility:** Schools, service organizations, municipalities, and community groups planting on public land.

[More on MUCFC](#)





# Community Forestry Catalyst Fund (CF2)

**Administered by:** Maryland Forest Service,  
Chesapeake Bay Trust

**Summary:** Provides flexible grants for planting  
and site prep in underserved and overburdened  
communities. No match requirement.

**Eligibility:** Local governments and nonprofits  
serving environmental justice communities.

[More info on CF2](#)





## LOCAL INITIATIVES

# Creek ReLeaf

Frederick County

**Administered by:** Frederick County Division of Energy and Environment

**Summary:** A reforestation program aimed at increasing forested areas on both private and public lands. The program provides landowners with a land assessment, a forest plan, installation of native trees and shrubs, five years of maintenance, and payment for a permanent conservation easement on the planted parcel.

**Eligibility:** Landowners with parcels of at least 2 acres (contiguous parcels can be combined to meet this minimum).

[More info on Creek ReLeaf](#)





# Turf to Trees

Baltimore County

**Administered by:** Baltimore County Department of Environmental Protection and Sustainability (EPS)

**Summary:** Offers free reforestation projects to landowners with at least one acre of open space. EPS staff collaborate with landowners to develop a planting plan, coordinate with contractors for site preparation, tree installation, and provide maintenance for three years.

**Eligibility:** Landowners or groups with  $\geq 1$  acre of open space available for reforestation.

[More info on Turf to Trees](#)





## ADDITIONAL RESOURCES & GRANTS

### John S. Ayton State Tree Nursery

Produces millions of tree and shrub seedlings each year for reforestation and other plantings across Maryland and Delaware. Seedlings are available for conservation, reforestation, lumber, and other purposes.

[More info](#)

### Gift of Trees

Allows individuals to donate trees to be planted on public lands in honor or memory of someone, celebrating special occasions while contributing to environmental restoration.

[More info](#)





## ADDITIONAL RESOURCES & GRANTS

### Urban Trees Grant Program

Administered by the Chesapeake Bay Trust, this program provides funding for tree planting projects in urban and underserved areas, supporting the initiative's goal to plant 500,000 trees in these communities.

[More info](#)

### MDOT Urban Tree Grant Program

In partnership with MUCFC and the Maryland Forest Service, this program offers grants up to \$5,000 for tree planting projects and up to \$10,000 for pocket forest projects, focusing on areas affected by environmental justice issues or heat island effects.

[More info](#)







# Thank you for listening!

Request assistance for tree planting at

<https://dnr.maryland.gov/forests/Pages/I-want-to-plant-trees-in-my-county.aspx> or call your DNR County Forester

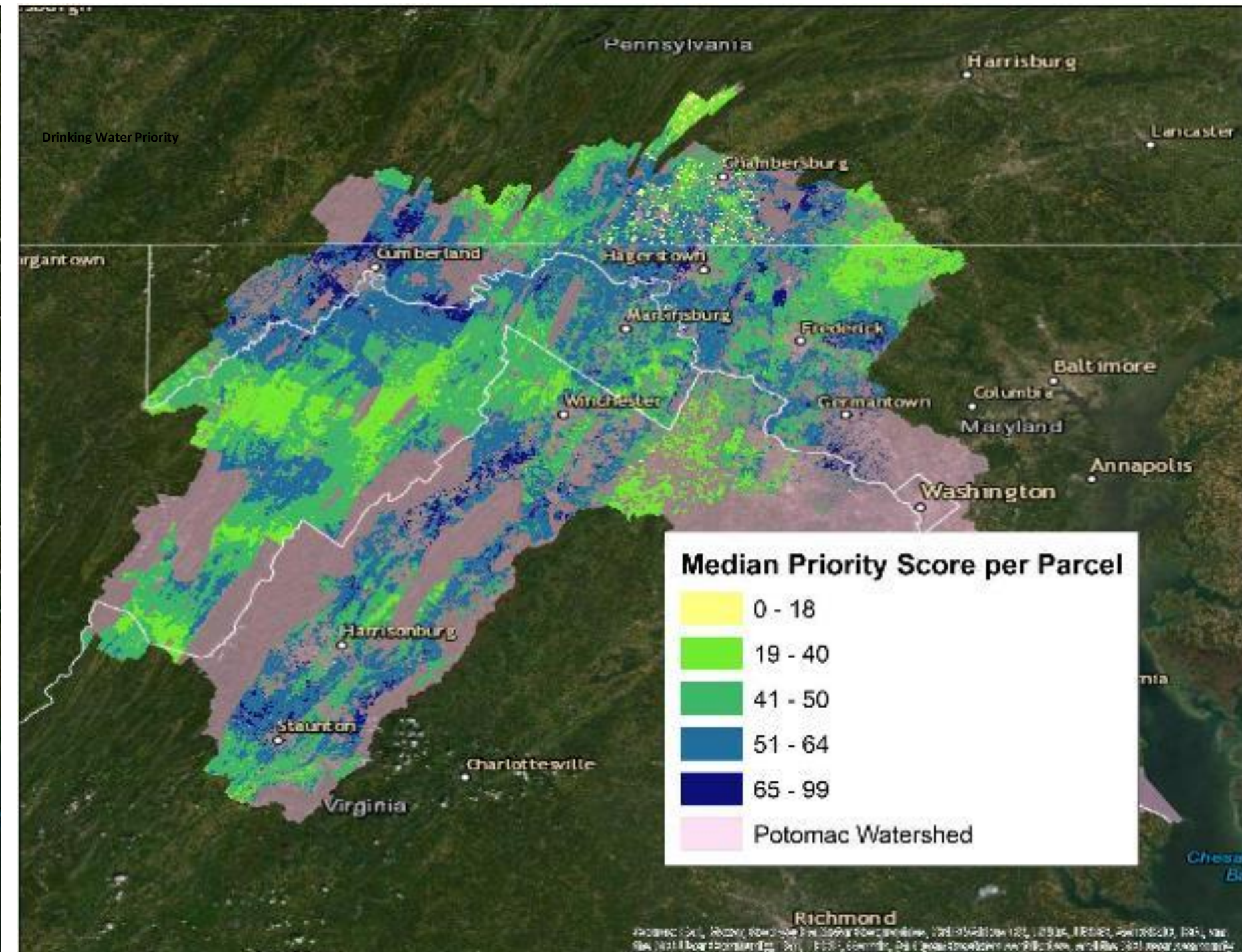
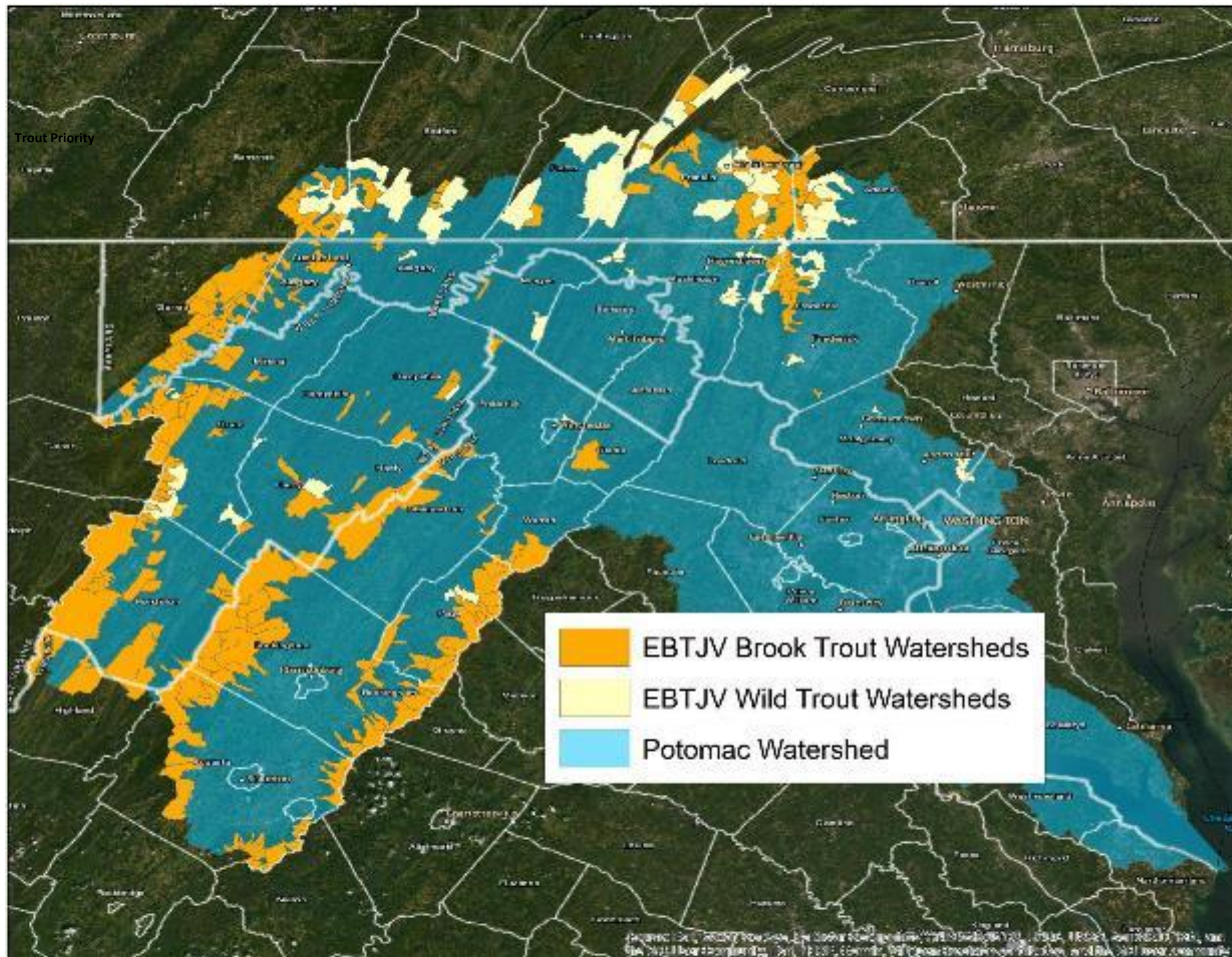
STAC Brook Trout Workshop  
June 3, 2025

**Dr. Anne Hairston-Strang**  
Director/State Forester  
Maryland Forest Service  
[anne.hairston-strang@maryland.gov](mailto:anne.hairston-strang@maryland.gov)



# Draft Upper potomac riparian forest buffer strategy

## Priorities: trout and source water protection



Eastern Brook Trout Joint Venture

Interstate Commission on the Potomac River  
Basin targeting for source water protection



# Maryland DNR Freshwater Fisheries - Coldwater Resources Mapping Tool

For technical support contact Adam.Eshleman@Maryland.gov | Trout: 101 | User Guide | Layer Metadata

Layer List

Layers

- ☒ Maryland Trout Watersheds - These watersheds represent the distribution of wild trout resources across the State of Maryland
- ☒ Benthic Coldwater Macroinvertebrates - This layer represents the distribution of Tallaperla and Sweltsa (coldwater obligate stoneflies). Their presence represents good water quality and temperatures similar to those required by wild trout
- ☐ HOBOWaterTempLoggers - DNR TempLoggers Summary Stats
- ☒ 50m Land Use Buffer - All Trout Watersheds
- ☐ MD\_ParcelBoundaries - Parcel Boundaries
- ☐ Put and Grow Trout Watersheds - Watersheds where trout are stocked as fingerlings and grow to adults for recreational purposes
- ☐ Priority Brook Trout Restoration Watersheds
- ☐ Fisheries Management Areas - Stocked Locations
- ☒ Maryland\_Political\_Boundaries\_\_County\_Boundaries

