



# THE BAY PROGRAM: PRESENT AND FUTURE

Scientific and Technical Advisory  
Committee Retreat

June 17, 2025

# AGENDA

- Phase 7 Updates (Kaylyn Gootman)
- Upcoming Asks of STAC from the Chesapeake Bay Program (Kaylyn Gootman)
- Beyond 2025 Phase II
  - Where Are We in the Process and Outcome Updates (Breck Sullivan)
  - Governance and Structure Update and Public Feedback (Rachel Felver)
- Fundamental Strategies (Breck Sullivan)



# Phase 7 Update

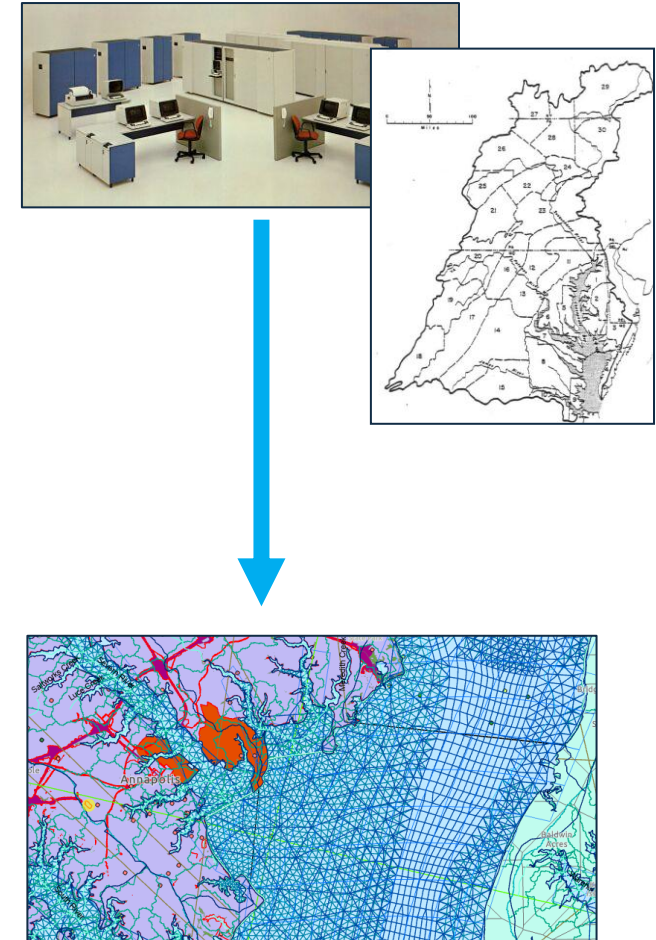
Dr. Kaylyn Gootman



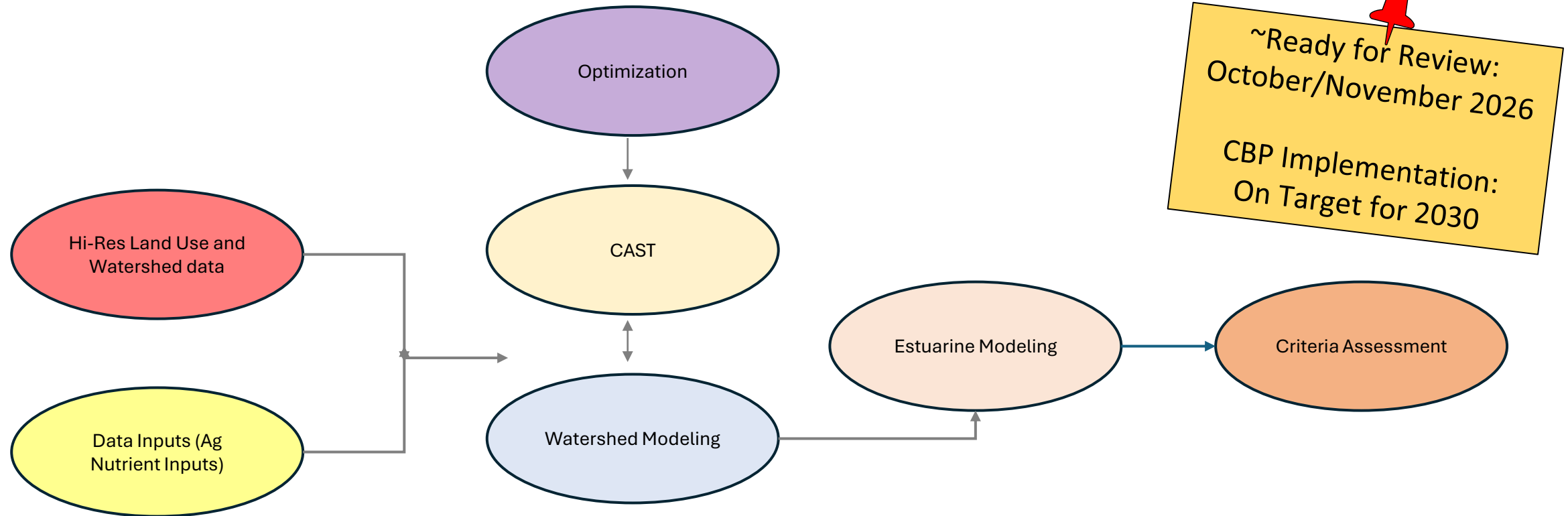
# A Refresher on CBP Models

- CBP models to:
  1. Explain monitoring data
  2. Plan management actions
  3. Combine the effects of different management actions
- CBP has a long history of modeling that grows with the partnership
- Models are built by the partnership
  - Expression of the CBP partnership's knowledge about the Chesapeake system

<u>Time</u>	<u>Name</u>	<u>Scenarios</u>
Mid 1980s		0
Early 1990s	Phase 2	<10
Late 1990s	Phase 4.1	37
Early 2000s	Phase 4.3	400+
2009 – 2010	Phase 5.3.0	300+
2011 – 2017	Phase 5.3.2	1000 or so
2017	Phase 6	1000s per year
2018 – 2028	Phase 7	Many more...

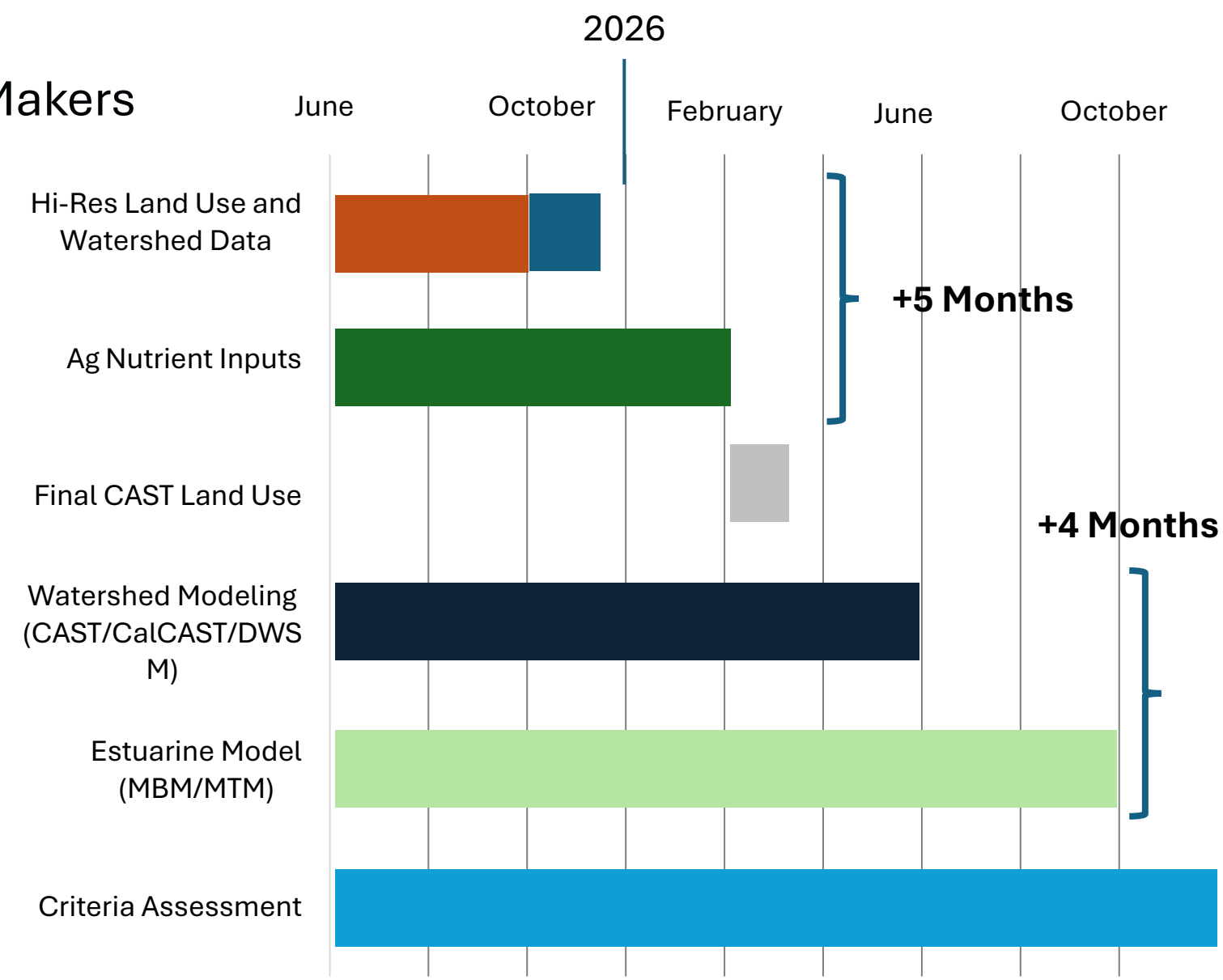


# Developing Phase 7 Suite of Models



# Phase 7 “Do-ers” and Decision Makers

- **Hi-Res Land Use and Watershed Data**
  - Land Use Workgroup, Water Quality GIT, Land Data Team/CBPO
- **Ag Nutrient Inputs**
  - Agriculture Modeling Team
- **CAST**
  - Water Quality GIT, Implementation & Evaluation Team
- **Watershed Modeling**
  - Modeling Workgroup & Water Quality GIT, Modeling Team
- **Estuarine Modeling**
  - Modeling Team, Modeling Workgroup & Water Quality GIT
- **Criteria Assessment (4D Interpolator)**
  - Bay Oxygen Research Group, Criteria Assessment Protocol Workgroup, STAR



Model Project Area

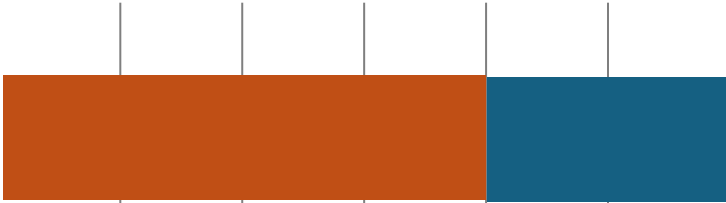
# Detailed Timeline (June 2025—Feb 2026)

June                      August                      October                      December                      February '26

- **Hi-Res Land Use and Watershed Data**

- Reconciling Mapped Construction (Urban Stormwater Workgroup/Watershed Technical Workgroup)
- CAST Segmentation (WQGIT)
- Phase 7 load sources (WQGIT)
- Wastewater inputs (WWTWG)
- BMP Updates (e.g., Forest Harvest BMP)
- Federal Land allocation (FFWG)

Hi-Res Land Use  
and Watershed  
Data



Ag Nutrient Inputs



- **Ag Nutrient Inputs**

- Agriculture Modeling Team

Final CAST Land  
Use



- **CAST**

- Water Quality GIT

Model Project Area

---

---

# Phase 7 Next Steps

- Water Quality GIT Meeting (June 23): Phase 7 timeline presentation and discussion
- Management Board Meeting (July/August): Review and approval of extended timeline
- Principals Staff Committee Meeting (August 20): Review and approval of extended timeline
- Continued Oversight:
  - Additional progress reporting (WQGIT/MB)
  - Option to apply previously vetted and approved Phase 6 inputs



# Upcoming Asks for STAC

## Reviews

- Living Resources Habitat Suitability Model
  - February 2026
- 4D Interpolator
  - Summer 2026
- Phase 7 Suite of Models
  - October/November 2026

## Weigh In

- Manure Treatment Technology
  - Fall or Winter 2025



# 2024 EXECUTIVE COUNCIL CHARGE



Members directed the Bay Program's Principals' Staff Committee to take the following actions by the end of 2025:



Revise the existing *Chesapeake Bay Watershed Agreement*.



Elevate conservation as a key pillar of the partnership.



Address both water quality and living resources (e.g., habitat, wildlife).



Place a greater emphasis in engaging all communities of the watershed.



Ensure goals and outcomes are measurable, time-bound and sufficient to complete the outcome as quickly as possible.



Ground revisions in the most current scientific understandings and issues.

# THERE'S MORE TO THE *WATERSHED AGREEMENT* THAN THE OUTCOMES...

Watershed Agreement Section	Revision Lead
Vision	Principals' Staff Committee
Preamble	Principals' Staff Committee
Principles	Principals' Staff Committee
Goals	Principals' Staff Committee, Management Board
Outcomes	Management Board, Outcome Leads
Management Strategies	Management Board

# VISION REVISIONS

2014: The Chesapeake Bay Program partners envision an environmentally and economically sustainable Chesapeake Bay watershed with clean water, abundant life, conserved lands and access to the water, a vibrant cultural heritage and a diversity of engaged stakeholders.

2025: The Chesapeake Bay Program partners envision an environmentally and economically sustainable Chesapeake Bay watershed with clean water, abundant life, conserved and **healthy working** lands, a vibrant cultural heritage and a **wide range of engaged individuals whose communities enjoy access to the waters and natural landscapes of the region.**



# REVISIONS TO PRINCIPLES

- Adds recognition of Tribal nations.
- Expands holistic social science integration.
- Strengthens local knowledge inclusion.
- Removes specific reference to environmental justice but is still implied through added language stating strong inclusion of all and welcoming participation.
- Several principles updated for clarity, specificity and impact.







## Thriving Habitats and Wildlife

Sustainable Fisheries  
Vital Habitats



## Clean Water

Water Quality  
Toxic Contaminants



## Healthy Landscapes

Land Conservation  
Healthy Watersheds  
Climate Resiliency



## Engaged Communities

Local Leadership  
Public Access  
Stewardship

# REVISED GOALS

# HOW CAN OUTCOMES BE REVISED?

**Updated:** Maintains original intent, language added to make it more specific, measurable, actionable, relevant or timely.

**Consolidated:** Outcomes merged to form a single outcome or activities underneath an outcome are integrated into other outcomes.

**Removed**

**Replaced:** Relates to original outcome's intent or subject.

**Reclassified:** Changed to a target or activity underneath another outcome.



# STRUCTURE OF THE REVISED OUTCOMES

**Outcomes:** Long-term, high-level change that is desired or the difference made by the partnership's actions.



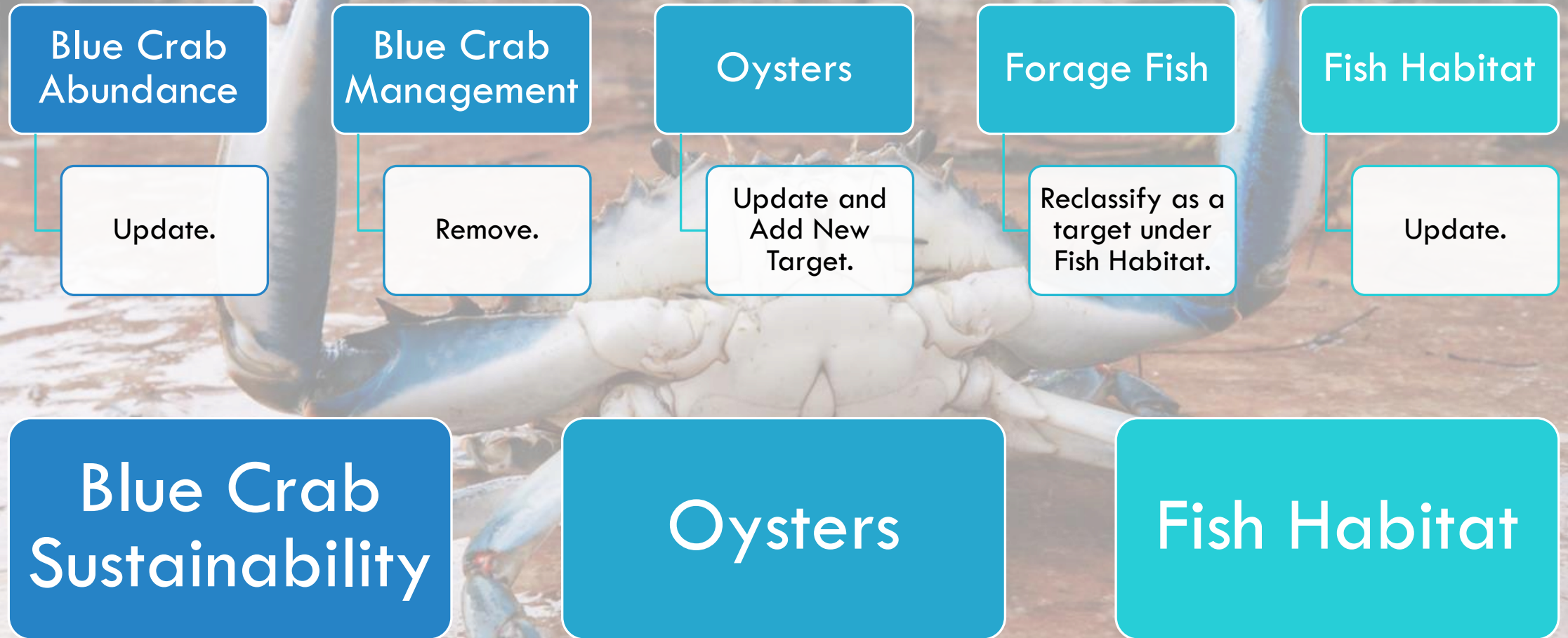
**Targets:** Direct products of the actions planned for and taken as partners.



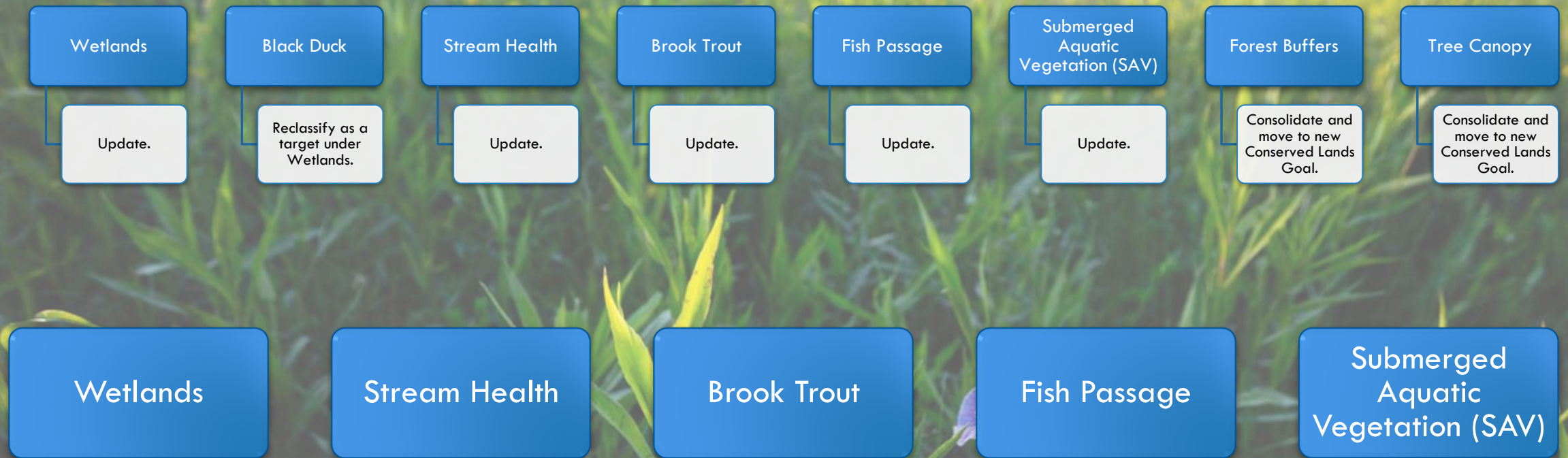
**Activities:** Specific actions taken to achieve the targets.



# SUSTAINABLE FISHERIES = THRIVING HABITAT AND WILDLIFE



# VITAL HABITATS = THRIVING HABITAT AND WILDLIFE





# WATER QUALITY & TOXIC CONTAMINANTS = CLEAN WATER

2017 Watershed  
Implementation  
Plans

Remove.

Reducing Excess  
Nitrogen, Phosphorus  
and Sediment

2025 Watershed  
Implementation  
Plan

Update.

Water Quality  
Attainment and  
Monitoring

Water Quality  
Standards and  
Attainment

Update.

Toxic Contaminants  
Research

Consolidate.

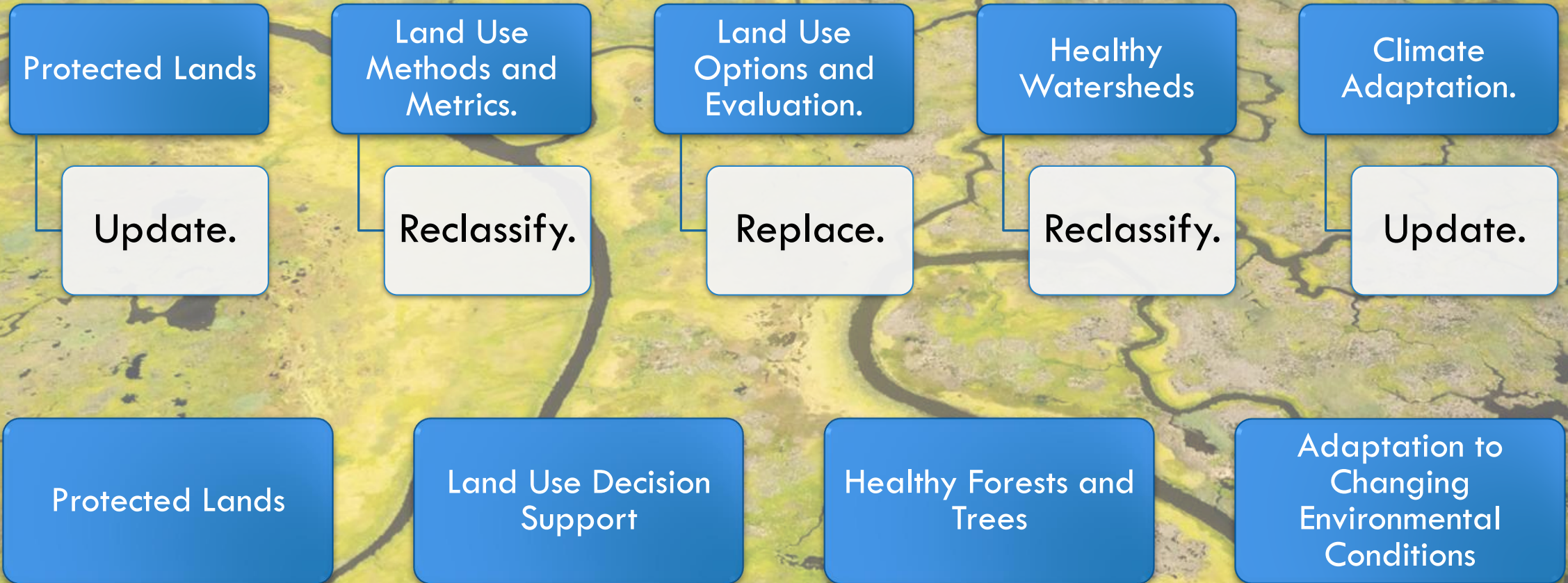
Toxic  
Contaminants  
Migration

Toxic Contaminants Policy  
and Prevention

Consolidate.



# HEALTHY WATERSHEDS, LAND CONSERVATION & CLIMATE RESILIENCY = HEALTHY LANDSCAPES





# STEWARDSHIP, PUBLIC ACCESS & ENVIRONMENTAL LITERACY = ENGAGED COMMUNITIES

Student

Update.

Sustainable  
Schools

Reclassify as a  
target under  
Environmental  
Literacy Planning.

Environmental  
Literacy  
Planning

Update.

Public Access  
Site  
Development

Update.

Stewardship

Update.

Local  
Leadership

Update.

Diversity

Replace with  
Workforce.

Public Access

School District  
Planning

Student  
Experiences

Stewardship

Workforce

Local  
Leadership

# REVISED OUTCOMES

## Healthy Landscapes

- Adaptation to Changing Environmental Conditions
- Healthy Forests and Trees
- Land Use Decision Support
- Protected Lands

## Clean Water

- Reducing Excess Nitrogen, Phosphorus and Sediment
- Toxic Contaminants Mitigation
- Water Quality Standards Attainment and Monitoring

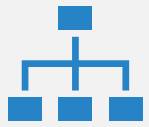
## Thriving Habitat and Wildlife

- Blue Crab Sustainability
- Brook Trout
- Fish Habitat
- Fish Passage
- Oysters
- Stream Health
- Submerged Aquatic Vegetation (SAV)
- Wetlands

## Engaged Communities

- Local Leadership
- Public Access
- School District Planning
- Stewardship
- Student Experiences
- Workforce

\*Climate Monitoring and Assessment will be replaced with Climate Science Integration and become a fundamental strategy across all levels of the partnership.



Originally tasked to Goal Implementation Team Six—Enhancing Partnering, Leadership and Management



Three teams of volunteers were formed—Structure, Governance and Process.



At the March 6 Management Board meeting, the teams were asked to identify their 3-5 top priorities; at the March 27 PSC meeting, GIT 6 was directed to focus on 3 priorities.

# CBP STRUCTURE AND GOVERNANCE



# COLLECT BEST PRACTICES FOR MEETING OPERATIONS

- Clearly define roles and responsibilities of Chairs, Coordinators, Staffers, Members and Interested Parties; voting/non-voting.
- Standardize agendas and meeting documentation-follow MB/PSC format.
- Guidance on effective meeting size based on purpose.
- Delegate attendance to resolve schedule conflicts and avoid meeting fatigue; individuals responsible for personal notes; follow up with Coordinators, if needed.
- Unanimous or consensus-based approach for decision making.
- Utilize CBP Meetings Calendar to provide advance notice and materials (1-2 weeks).
- Update group membership on website every six months.
- Serves as core email distribution list for group members.
- Choose common meeting and file sharing platforms (e.g., MS Teams, Google Drive).
- Guidance on AI use during meetings.

# GEOGRAPHIC PROGRAM REVIEWS

- Objective: Review other geographic programs to gain insights for developing Scope(s) of Work.
- Suggested Approach : Rapid assessment with 5-6 related regional partnerships. Delve further as needed.
  - How was the Program formally established? (e.g., statutes)
  - Organizational structure? What guides the Program?
  - Funding mechanisms; deployment and prioritization of resources?
  - How are you measuring success?
  - Lessons learned?
- Informational discussions and comparative exercise in June.
  - Individuals set up meetings with identified partnerships.
  - Review Program materials (e.g., strategic plan, org chart).
  - Discuss issues of interest; inform of CBP approach and seek feedback.
- [As desired] Informational small group discussion(s) with partnerships' external stakeholders.

# EXPERTISE AND RESOURCES NEEDED FOR TOP PRIORITIES

Clarifying	Clarifying membership roles, responsibilities, and definitions of Chesapeake Bay Program groups.
Revising	Revising the Strategy Review System (SRS).
Refining	Refining decision-making processes.
Strengthening	Strengthening communication, engagement, and trust.
Establishing	Establishing a logical framework and governance structure that supports the vision and goals of the Chesapeake Bay Watershed Agreement.

# ADVANCING GOVERNANCE: OPERATIONS & ACCOUNTABILITY

At the June Management Board meeting, a small team of 8-12 people was proposed to do the following:

- Plan our work.
- Prioritize our work.
- Manage our work.
- Review our work.

Team will consist of representatives from each jurisdiction, Chesapeake Bay Commission, three advisory committees, two federal representatives and one NGO representation.



**WE WANT ALL THE  
FEEDBACK!**

- Public feedback period will open on Tuesday, July 1 and run for 60 days until Monday, September 1.
- Everything you need to know can be found at <https://www.chesapeakebay.net/what/what-guides-us/planning-for-2025-and-beyond>
- Feedback can be emailed to [comments@chesapeakebay.net](mailto:comments@chesapeakebay.net).
- Chesapeake Bay Program staff is available to talk with any of your members or groups about Beyond 2025.





# Fundamental Strategies

## PROPOSED NEW OUTCOMES

### BRAIDING KNOWLEDGE STREAMS

Continually improve  
to braid together sci  
Indigenous, and local  
knowledge towards resto  
ecological integrity, promoting  
community well-being, and  
fostering sustainable land and  
water management practices.



### CHANGING ENVIRONMENTAL CONDITIONS

g science on changing  
ental conditions into all  
outcomes.

# WATERSHED AGREEMENT PRINCIPLES

Collaborate

Achieve Goals and Outcomes

Represent the interests of people

Operate with transparency

Use science-based decision-making and seek out innovative technologies

Maintain a coordinated watershed-wide monitoring and research program

Acknowledge, support and embrace local governments

Anticipate changing conditions

Adaptively manage

Seek consensus

Use place-based approaches

Engage the public

Explore using social science

Promote environmental justice

BRAIDING  
KNOWLEDGE  
STREAMS



CHANGING  
ENVIRONMENTAL  
CONDITIONS



# FUNDAMENTAL STRATEGIES

- The Principles identified in the Watershed Agreement are an overarching framework by which the Chesapeake Bay Program commits to operate.
- However, these principles are not operational as stated.
- Fundamental Strategies operationalize the principles towards achieving program outcomes.





## FUNDAMENTAL STRATEGIES

- Observation-based evaluation
- Model-based predictions
- Braiding knowledge streams
- Changing Environmental Conditions
- Interconnectedness

**Proposed to MB: Refer to Fundamental Strategies in updated Watershed Agreement in Management Strategies Section**



## NEXT STEPS

- Continue the discussion on Fundamental Strategies!
  - CBP Governance Discussion
  - CBP Management Strategies Development
  - What does a Changing Environmental Conditions team within the CBP look like?
  - Does the STAC Social Science Workgroup support Braiding Knowledge Streams?
- Utilize the public comment period to share your thoughts on how to incorporate them