

# Changing Views of the River

Dorothy Merritts, Robert Walter, Patrick Fleming,  
Michael Rahnis, Su Fanok, Simon Shenk, and  
Jeremy Zimmerman

Franklin and Marshall College  
The Chesapeake Watershed Initiative

Sedges at Great Marsh, Pennsylvania



Collaborative work with PA DEP (Jeff Hartranft), LandStudies, Inc (J. Spangler, W. Oberholtzer, K. & M. Gutshall, et al), US EPA (P. Mayer, K. Forshay, J. Weitzman), the USGS (M. Langland, A. Gellis, M. Cashman, et al), multiple colleagues: P. Fleming (F&M), N. Snyder (Boston College), W. Hilgartner (JHU), M. Demitroff (Stockton University), A. Grand Pre (LSU), and S. Inamdar (UD). Many students, research associates. Funding from PA DEP, US EPA, USGS, the NSF, R. K. Mellon Foundation.



1842



Most people focus on modern drivers as cause of degradation.



**Restore floodplains, streams, and riparian wetlands, not just stream channels. Avoid being channel-focused.**

**Depth of incision affects access or lack of access to Pleistocene gravel that generally is stored beneath Holocene sediments.  
(With Justin Spangler, LandStudies.)**



*"Ergo, nothing is fluvial."*  
Bill Dietrich, ~2010



Reservoir sediment  
(Fill terrace)

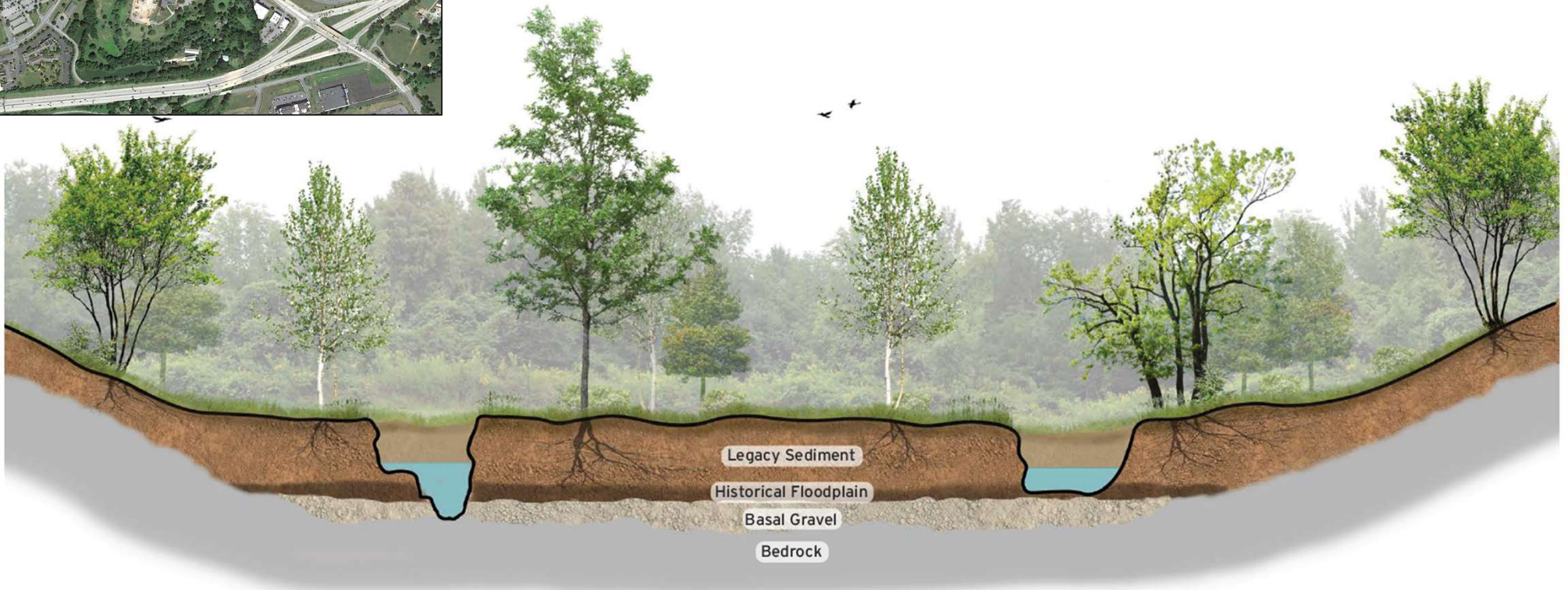
Reservoir sediment

Holocene marsh soil

Pleistocene periglacial rubble



## Pre-restoration condition



Existing Conditions

Typical Stream and Floodplain Section View

# Post-restoration condition



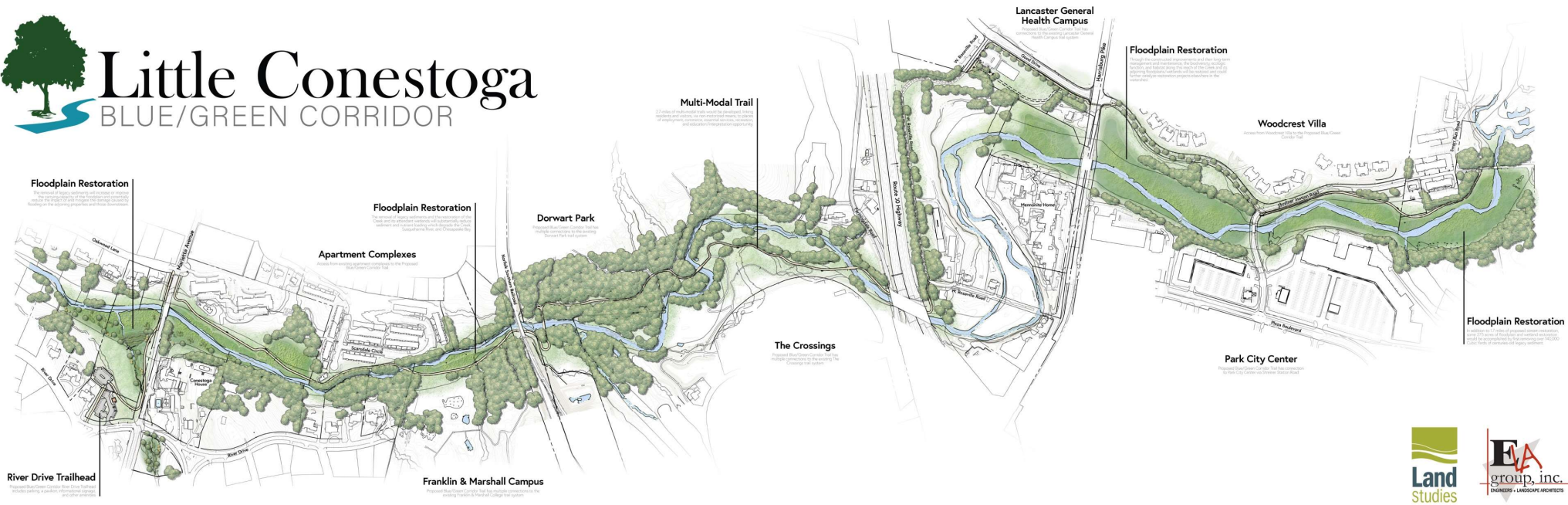
Historical / Restored Conditions

Typical Stream and Floodplain Section View



# Little Conestoga

## BLUE/GREEN CORRIDOR



## The Little Conestoga Creek Blue-Green Corridor Project

The Steinman Foundation and Little Conestoga Creek Foundation, working with public and private partners, have launched a project to rejuvenate about 2.5 miles of the impaired Little Conestoga Creek in what will be one of the largest restorative efforts of its kind in Lancaster County. The \$18 million project will generate substantial environmental and recreational benefits to the public, including miles of trails that will link hikers and bicyclists to parks, entertainment venues, shopping and essential services in Lancaster city and its immediate suburbs.

<https://lccbgc.org/>





Right bank Little Conestoga Creek, February 2023



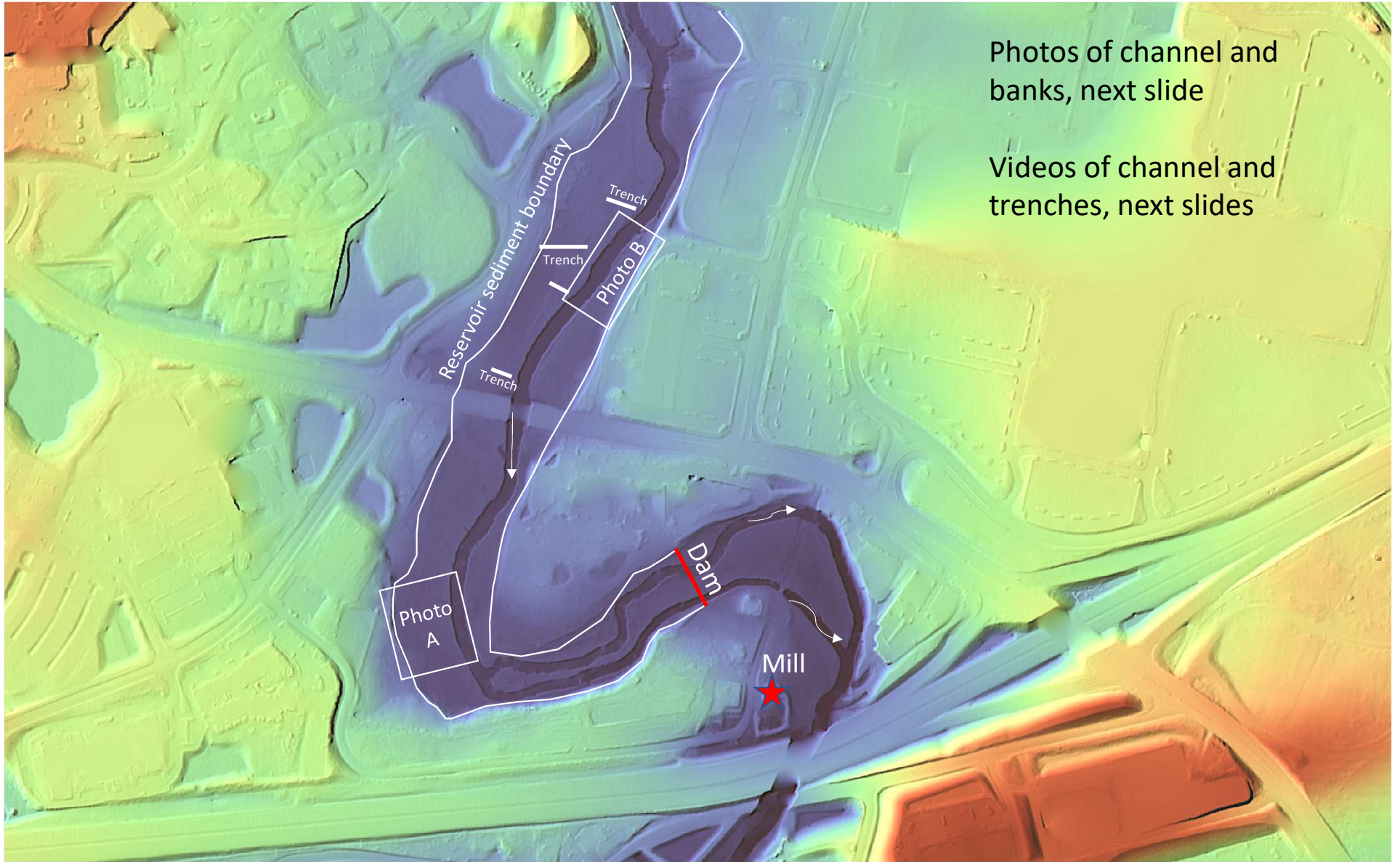
Right bank Little Conestoga Creek, February 2023





**Little Conestoga**  
BLUE/GREEN CORRIDOR





Photos of channel and banks, next slide

Videos of channel and trenches, next slides

**10.5 - Mennonite Home**

- A. Restoration
- B. Trail

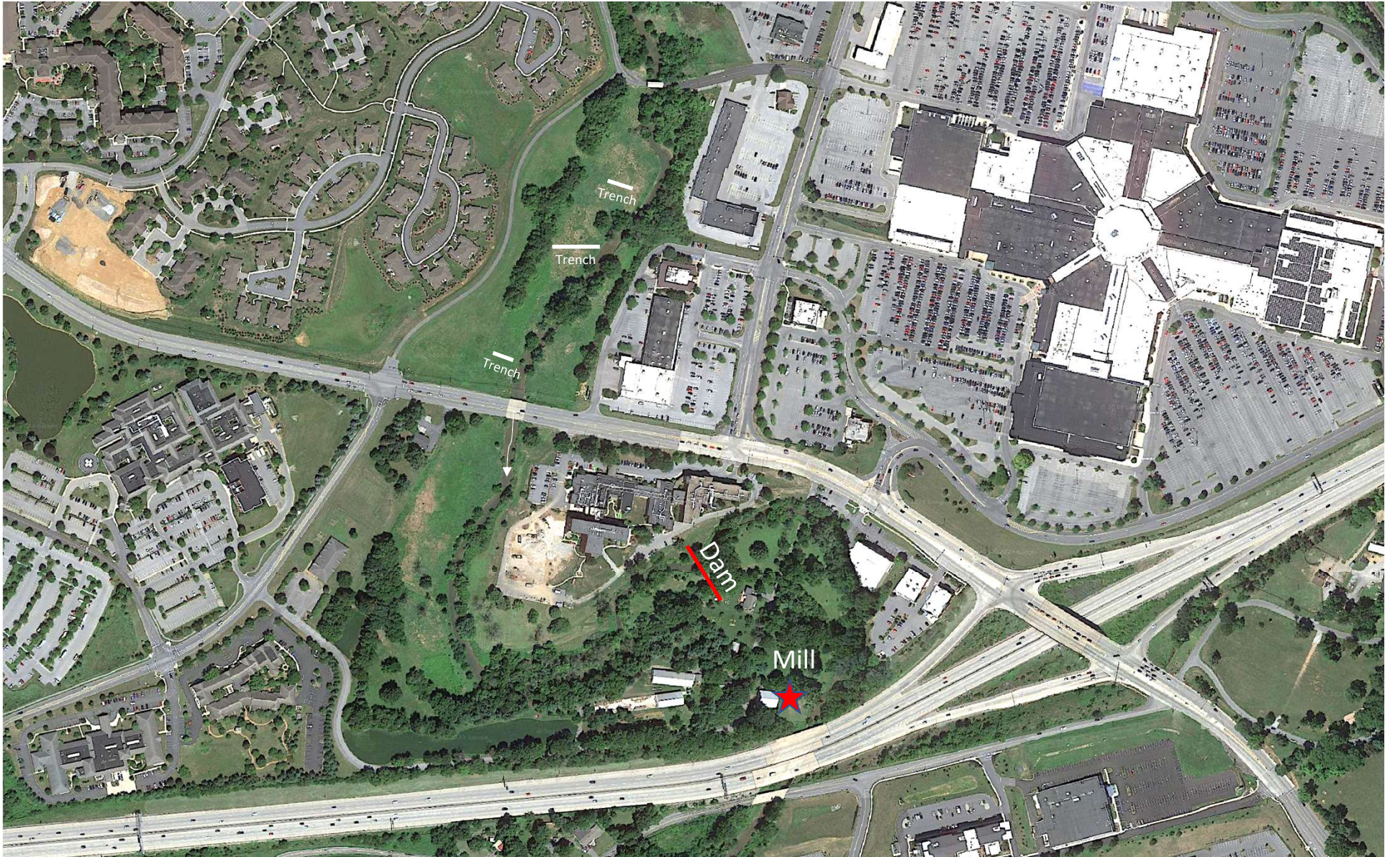
**10.6 - Woodcrest Villa**

- A. Restoration
- B. Trail

**10.7 - Shreiner Station**

- A. Restoration
- B. Trail





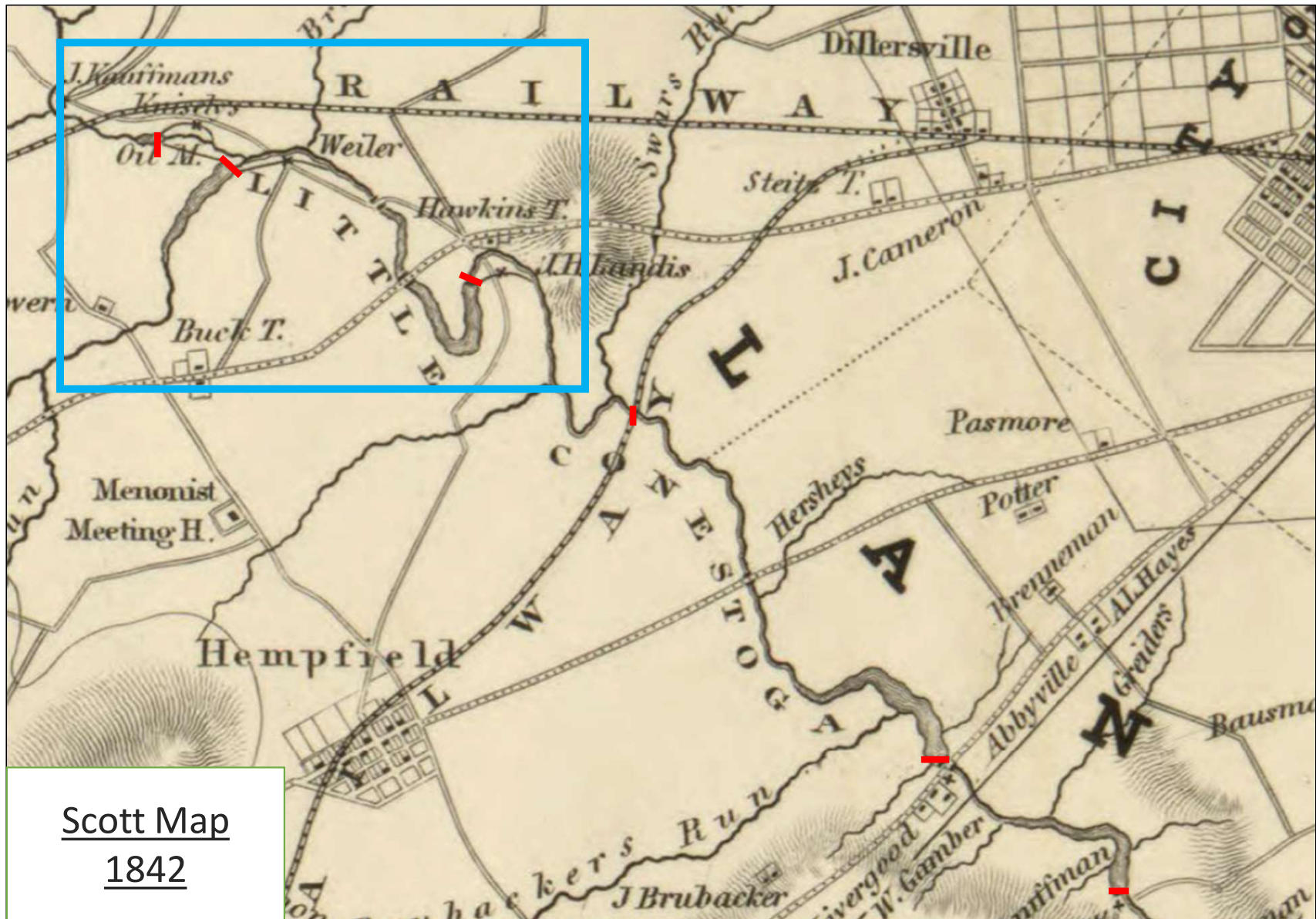
Trench

Trench

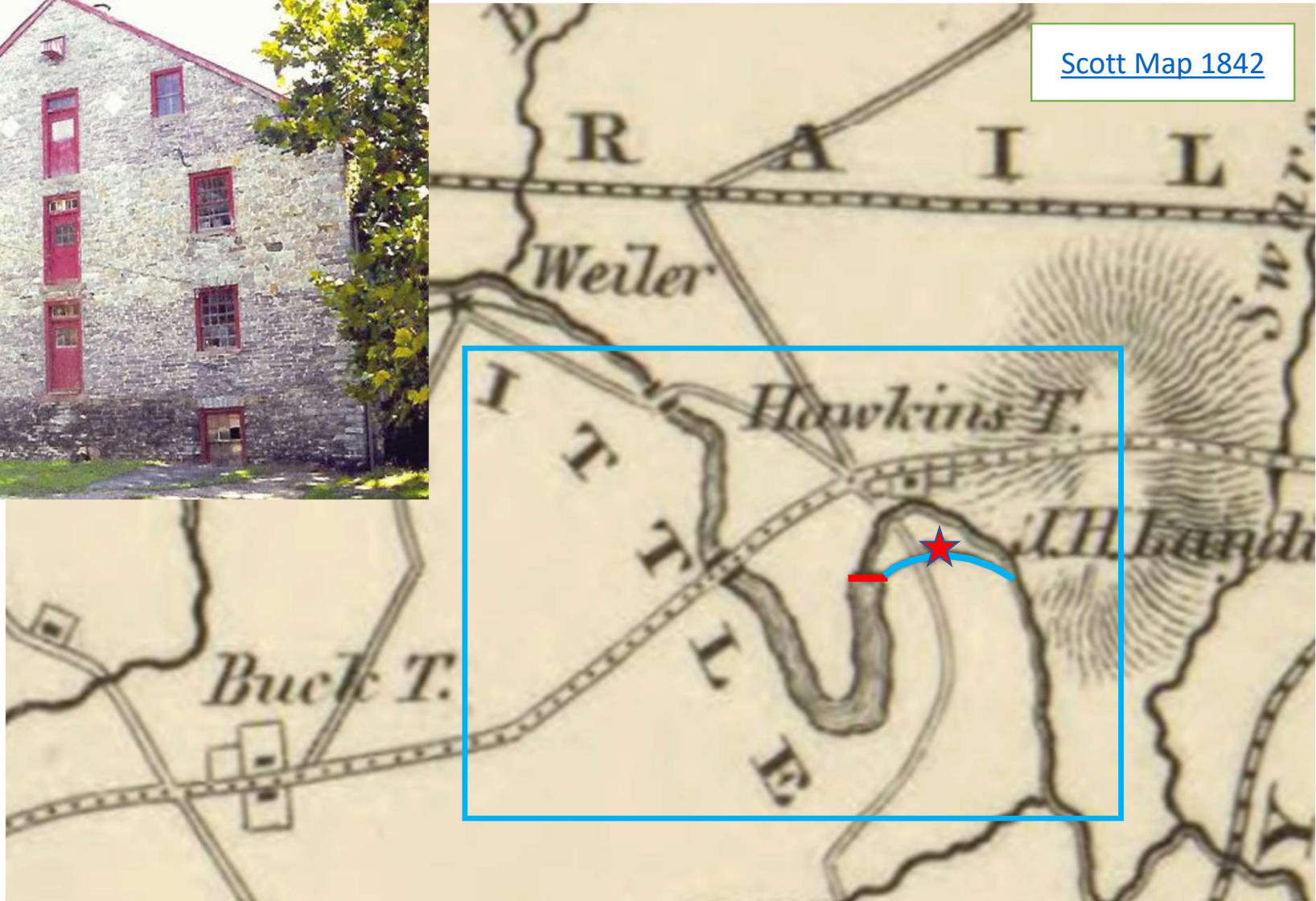
Trench

Dam

Mill



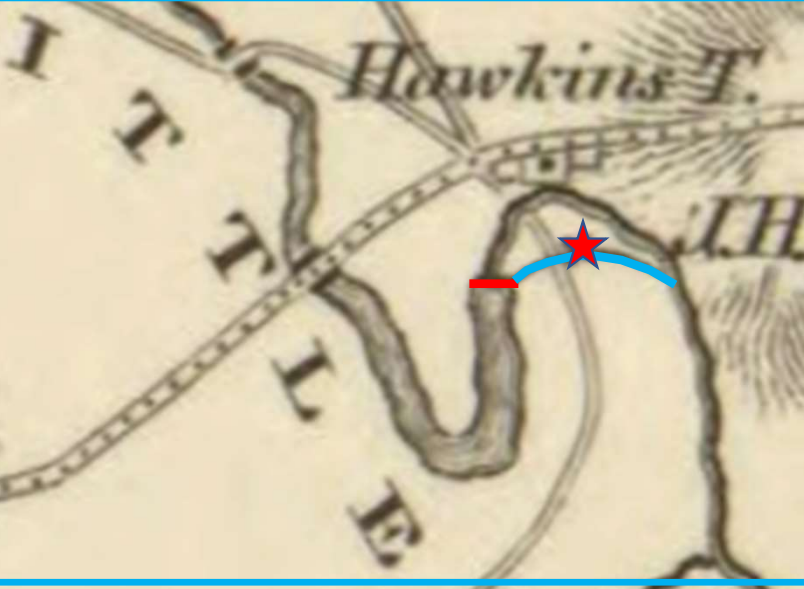
Scott Map  
1842



Scott Map 1842

R A I L

Weiler



Hawkins T.

Buck T.

ITTL E

J.H. Lund