



Maryland
Department of
the Environment

Overview of Crediting from the Jurisdictional Perspective

Gregorio Sandi
Maryland Department of the Environment

March 22, 2022

STAC - Evaluating a Systems Approach to Crediting:
Consideration of Wetland Ecosystem Services

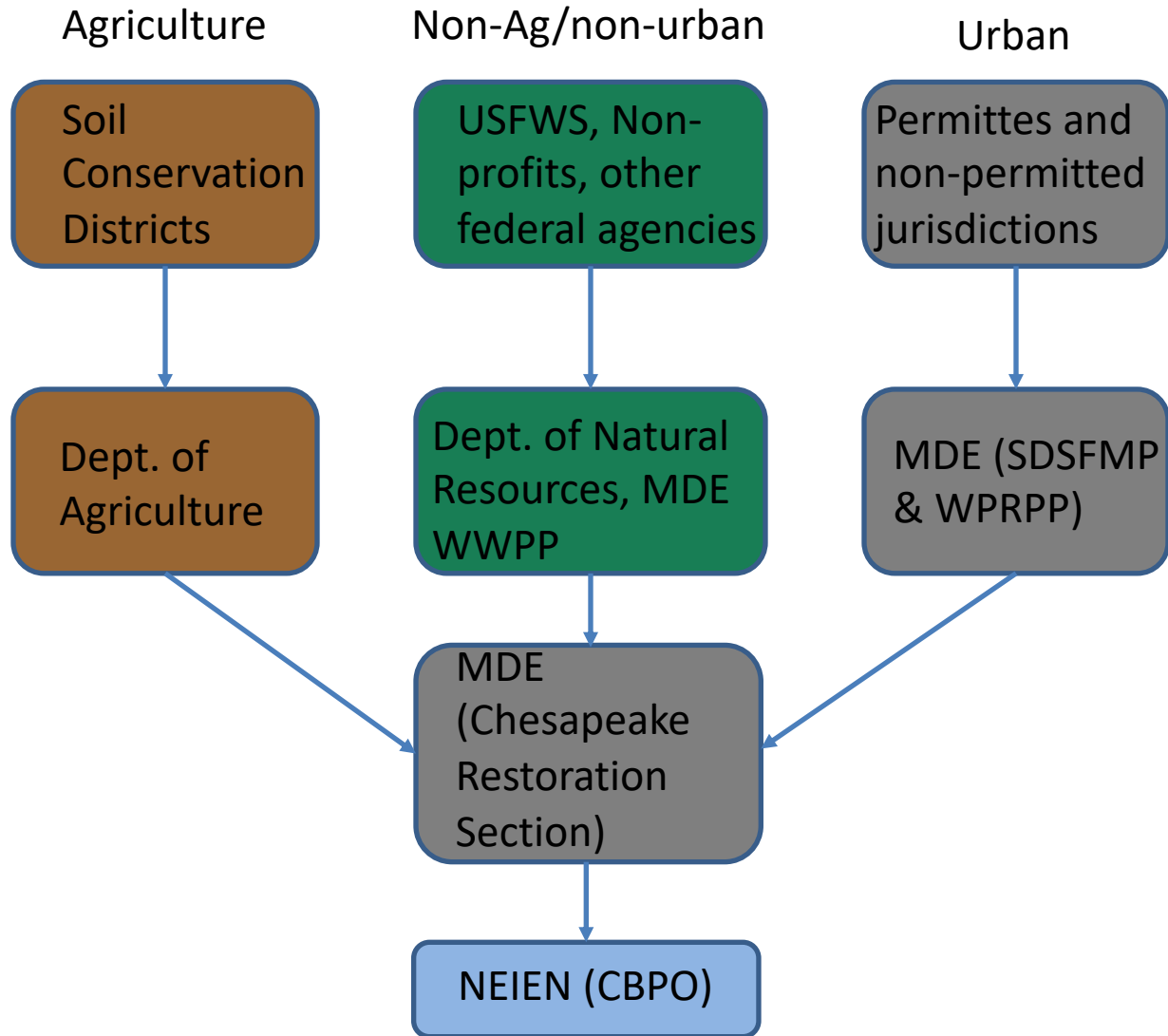
Background

- Maryland's Best Management Practice (BMP) reporting processes for Chesapeake Bay Model crediting changed substantially in 2010.
- The National Environmental Information Exchange Network (NEIEN) set uniform standards in data submission for modeling.
- Current focus is on Nitrogen, Phosphorus, and Total Suspended Sediments crediting.
- This is an overview of that process from our perspective



Maryland
Department of
the Environment

Wetland BMP Data Collection and Partners



SDSFMP = Stormwater, Dam Safety, and Flood Management Program
WPRPP = Watershed Protection, Restoration, and Planning Program
WWPP = Wetlands and Waterways Protection Program



Maryland
Department of
the Environment

Data QA/QC Process

Agriculture:

Both MDA and MDE sometimes receive wetland BMP data installed on agricultural lands. MDA and MDE coordinate to ensure no double counting occurs between the information received by either organization.

Non-Ag/non-urban:

MDE's Wetland and Waterways Protection Program receives data from numerous federal, State, and non-governmental organizations and will ensure the data provided is accurate.

Urban:

Wet Pond and Wetland BMPs instituted as part of the State's stormwater mitigation efforts are largely collected by the Stormwater, Dam Safety, and Flood Management Program which reviews annual data submissions.



Maryland
Department of
the Environment

Minimum Data Elements for Model Credit

- Unique BMP ID
- BMP Name that corresponds with partnership approved BMPs
- Measure value and description (e.g. 4 , acres restored)
- Built/Installation data (mm/dd/yyyy)
- Spatial Coordinates or geographic location
- Verification Date (mm/dd/yyyy)



Maryland
Department of
the Environment

Creating Model Inputs and Getting Credit

WPRPP Review

WPRPP will collect all the data and use the NEIEN Appendix to properly format for entry into the model via NEIEN

NEIEN

The National Environmental Information Exchange Network is used to create a uniform data submission that conforms to partnership rules.

CAST

Several background processes occur before data is integrated into the Chesapeake Assessment and Scenario Tool for Annual Progress Assessments



Maryland
Department of
the Environment

NEIEN Appendix and additional metrics

The NEIEN appendix is essentially the blueprint for how we report any Best Management Practice to the Chesapeake Bay Program.

Currently it is the only list of approved information types that will be processed through the current suite of model inputs.

If NEIEN were used for Ecosystem Services crediting, it would include modifications to the appendix and new systems to account for these new metrics.



Maryland
Department of
the Environment

Ecosystems reporting 10,000 Foot Overview from a BMP Data Manager

- Accounting for Ecosystem services in the current suite of data input tools for CAST would require a significant amount of effort to help define the acceptable currency and metrics that would be included.
- Ultimately it is up to the partnership to decide how to navigate the process, but I suggest starting small and incorporating more detail over time.



Maryland
Department of
the Environment