

Chesapeake Bay TMDL and What it Means for Stormwater

Katherine Antos, Coordinator
Water Quality Team
U.S. EPA Chesapeake Bay Program Office

May 13, 2010




Overview

- What's that about a Bay TMDL?
- Changes to land use between Watershed Model phases
- Stepwise process for Bay TMDL and WIPs
- Setting stormwater wasteload and load allocations in the Bay TMDL2


Sound Familiar?

Nov. -
Dec. -
2009

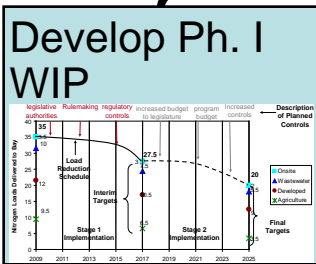
EPA sends Expectations letter to PSC



EPA sends Consequences letter to PSC



Major basin jurisdiction loading targets




Plan details into draft WLAs & LAs

Chesapeake Bay Watershed Nitrogen Load Allocation

Basin	Watershed	Watershed	Watershed	Watershed	Watershed	Watershed	Watershed	Watershed	Watershed
POTOMAC	ANNE ARUNDEL	CHARLES	PRINCE GEORGES	ST. PAUL	WEST VIRGINIA	WEST VIRGINIA	WEST VIRGINIA	WEST VIRGINIA	WEST VIRGINIA
POTOMAC	ANNE ARUNDEL	CHARLES	PRINCE GEORGES	ST. PAUL	WEST VIRGINIA	WEST VIRGINIA	WEST VIRGINIA	WEST VIRGINIA	WEST VIRGINIA
POTOMAC	ANNE ARUNDEL	CHARLES	PRINCE GEORGES	ST. PAUL	WEST VIRGINIA	WEST VIRGINIA	WEST VIRGINIA	WEST VIRGINIA	WEST VIRGINIA
POTOMAC	ANNE ARUNDEL	CHARLES	PRINCE GEORGES	ST. PAUL	WEST VIRGINIA	WEST VIRGINIA	WEST VIRGINIA	WEST VIRGINIA	WEST VIRGINIA


Nov. 2009 -
September 2010

Final TMDL Established




December 2010

Ph II WIP with local targets and controls

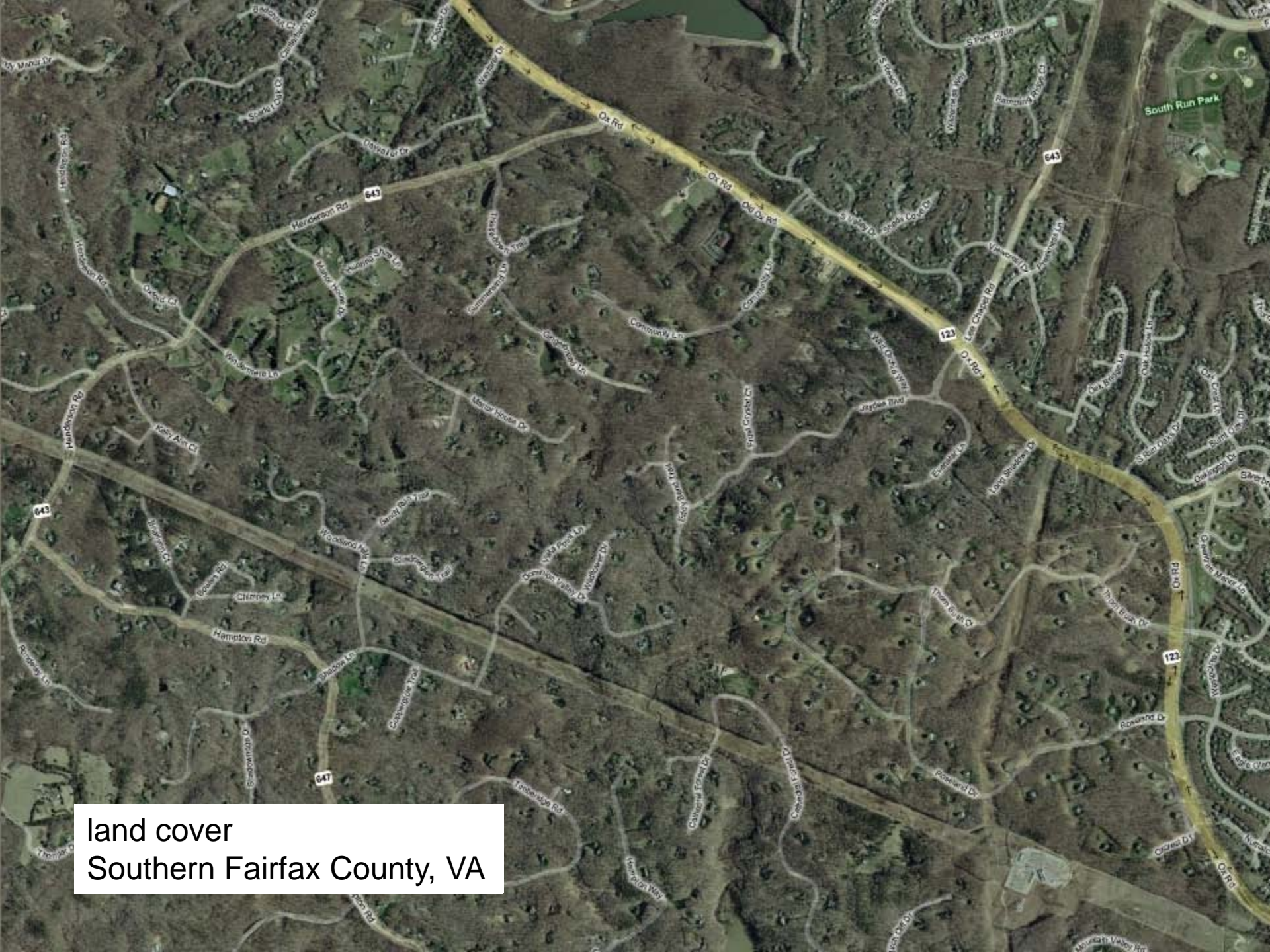


No later than November 2011

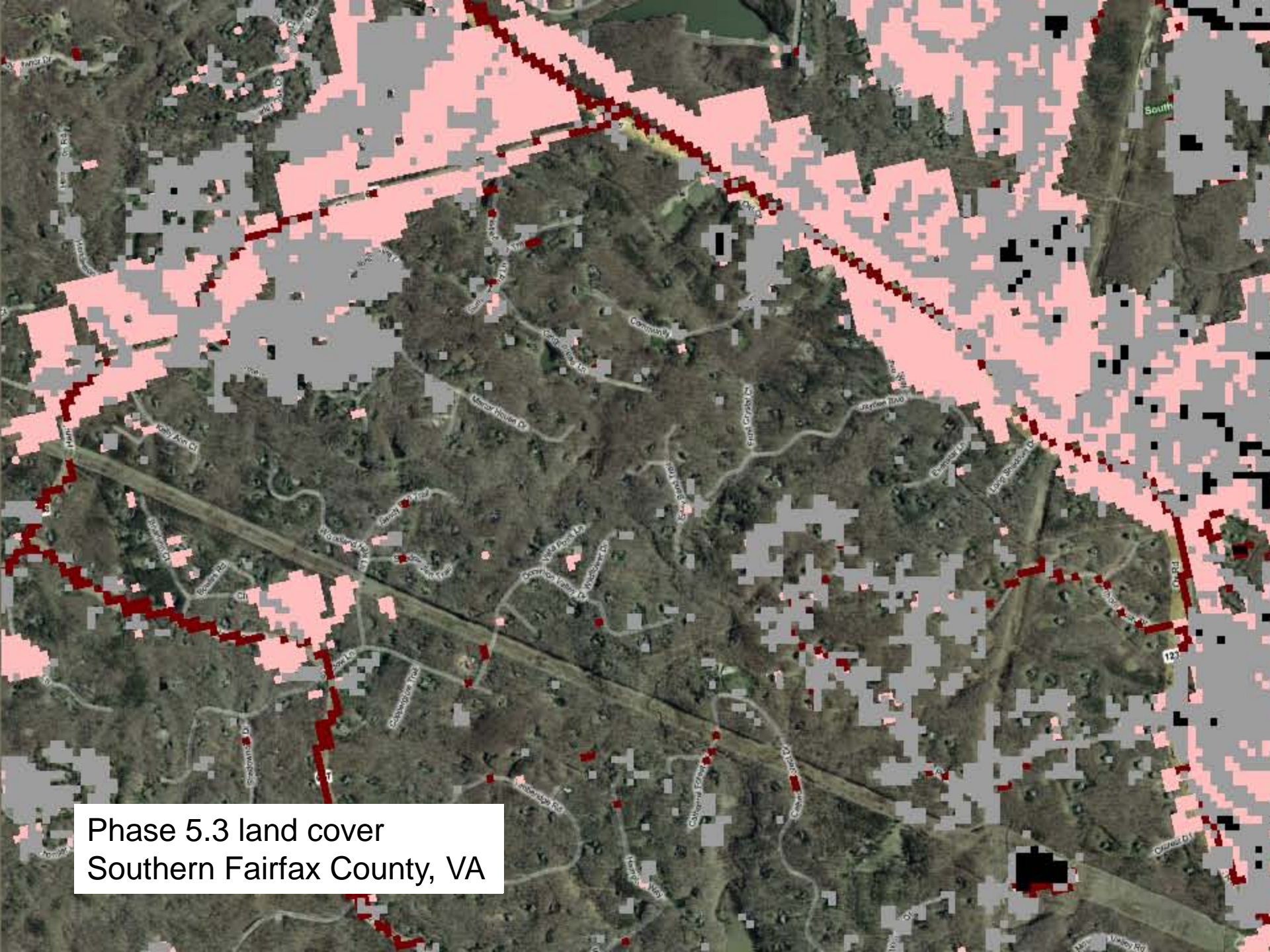
2-year milestones, reporting, modeling, monitoring



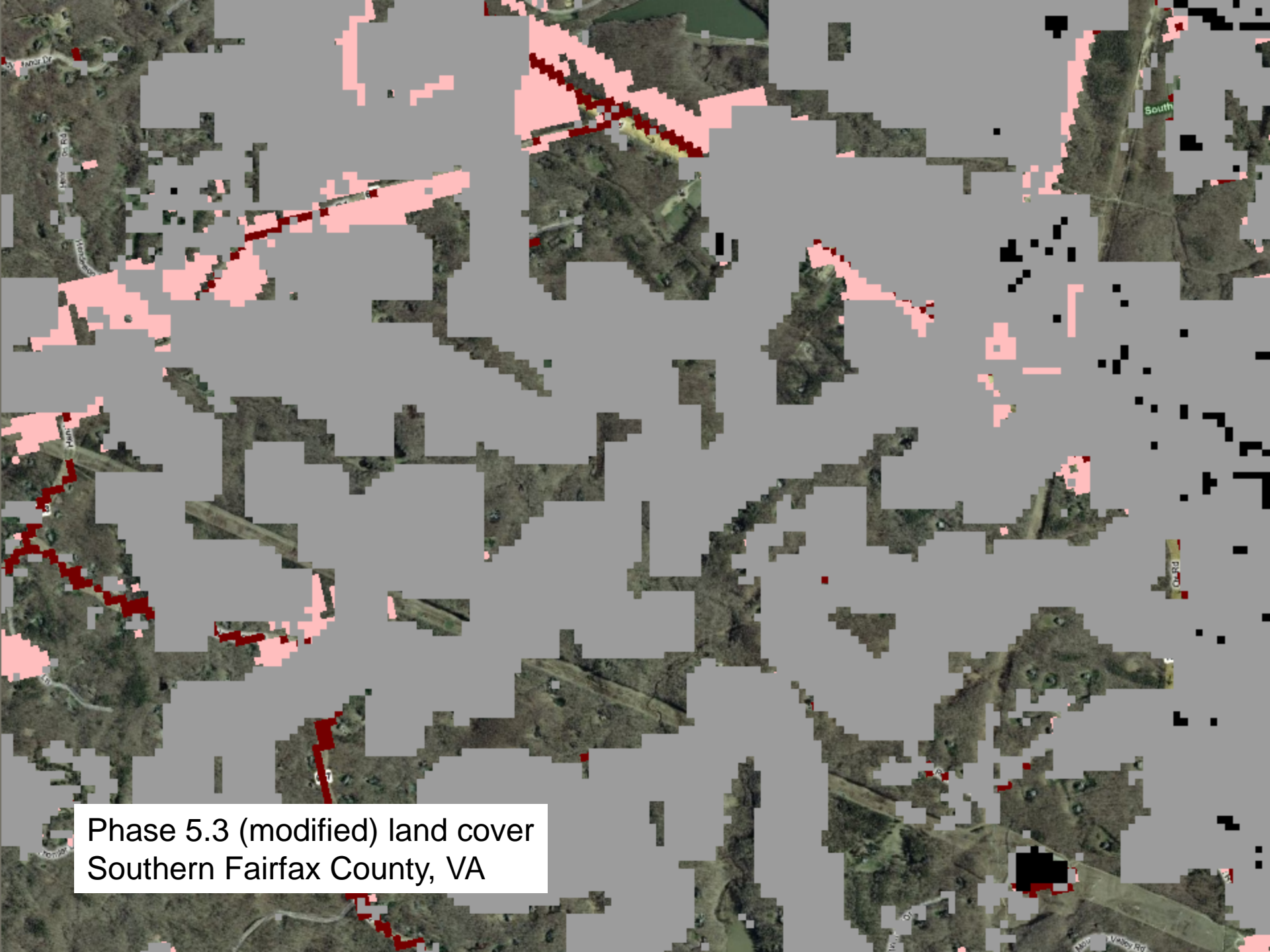
2012 - 2025



land cover
Southern Fairfax County, VA



Phase 5.3 land cover
Southern Fairfax County, VA



Phase 5.3 (modified) land cover
Southern Fairfax County, VA

Principals' Staff Committee

April 29-30, 2010

- EPA reaffirms federal-state commitment to establish Bay TMDL by December 31, 2010
- Will ensure 'pollution diet' and actions to meet it stay on aggressive pace

Step 1 – By December 2010

- **July 1** – Using existing models, EPA divides overall pollution diet for nitrogen and phosphorus among the states and D.C.
- **Aug. 15** – State/Basin Loads on sediment determined

Step 1- By December 2010

- States and D.C. complete draft Phase I Watershed Implementation Plans. No requirement for preliminary plans
- Draft Bay TMDL developed and offered for public comment. Continuation of regular two-way communication on developments with the Bay TMDL
- **Nov. 29** – States and D.C. complete final Phase 1 implementation plans.
- **Dec. 31** – EPA establishes Bay TMDL

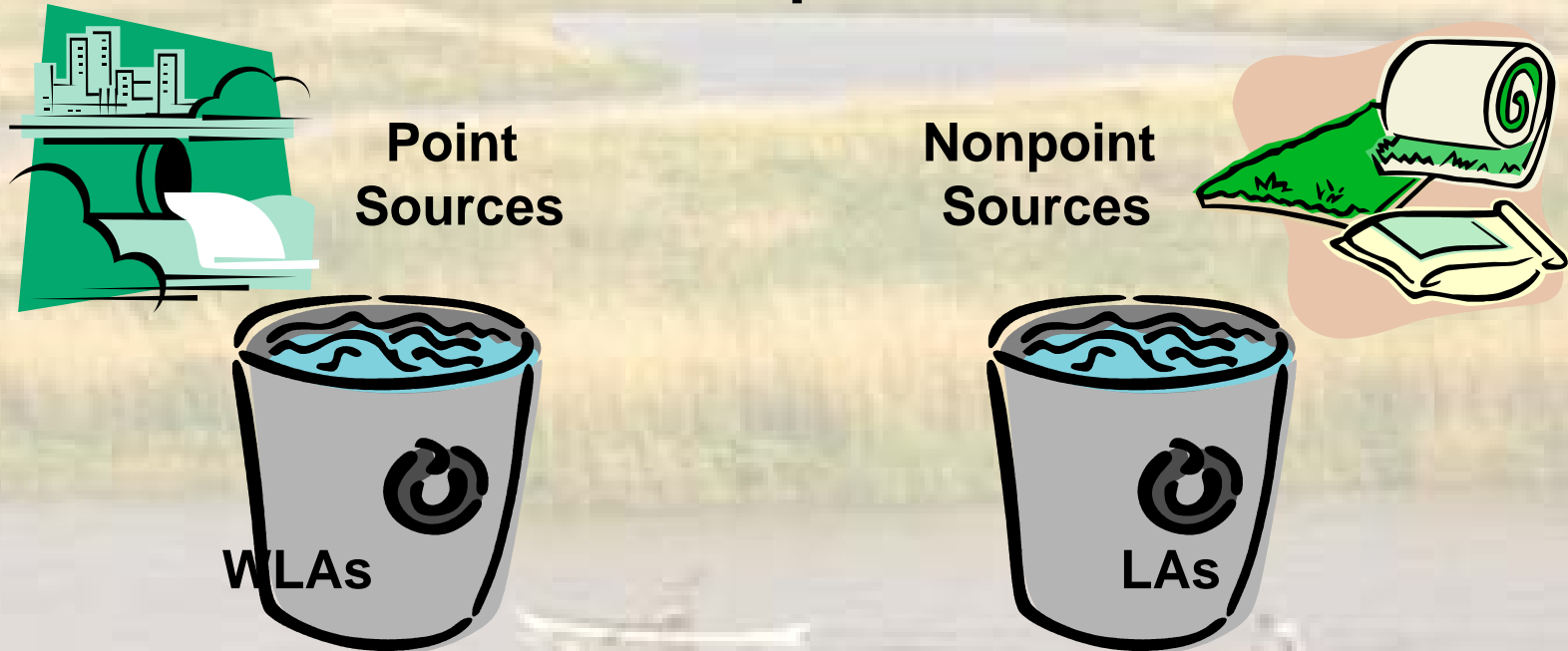
Step 2 - 2011

- EPA revises watershed model with results of model updates
- States and D.C. submit draft Phase II Watershed Implementation Plans by June 1; final by Nov. 1. Plans reflect any updates and finer scale of planned actions
- Along with final plans, states and D.C. submit for (at least) 30-day comment period any intention to modify TMDL allocations

Step 3 - 2017

- **Prior to 2017**
 - EPA reviews models and considers whether updates are needed
- **In 2017**
 - Jurisdictions submit Phase III implementation plans
 - Focus in Phase III plans is 2025, ensuring practices in place by then for restoration of the Bay and its tidal waters
 - EPA modifies the Bay TMDL, if necessary

Distributing Stormwater among Point and Nonpoint Sources



The Chesapeake Bay TMDL

The Phase I WIPs need to inform EPA how to distribute nitrogen, phosphorus and sediment loads

Stormwater - Background

- Stormwater discharges subject to the following NPDES permits go in “WLA bin”:
 - MS4s
 - Industrial stormwater
 - Construction general permit
 - NPDES permits associated with resource extraction
- Stormwater discharges from point sources that aren’t currently subject to NPDES regulation may be addressed in WLA or LA
- All other stormwater discharges are nonpoint sources that belong in “LA bucket”

MS4s

MS4 Permit Areas and Counties Chesapeake Bay Watershed



Pennsylvania, West Virginia, Delaware and New York

Phase II Jurisdictions

Maryland Phase I and II NPDES Jurisdictions

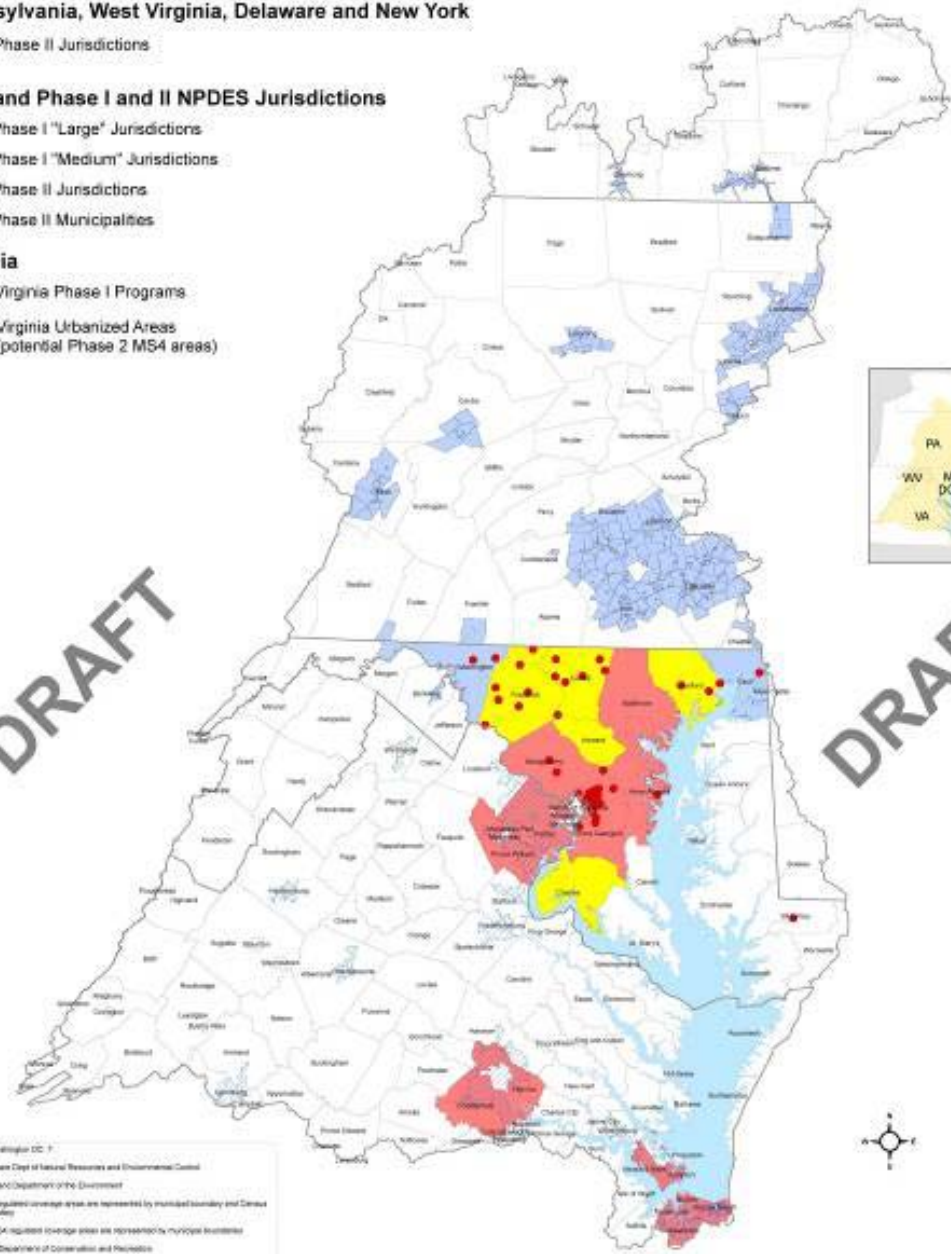
- Phase I "Large" Jurisdictions
- Phase I "Medium" Jurisdictions
- Phase II Jurisdictions
- Phase II Municipalities

Virginia

- Virginia Phase I Programs
- Virginia Urbanized Areas (potential Phase 2 MS4 areas)

DRAFT

DRAFT



Data source: Washington DC
Delaware: Delaware Dept of Natural Resources and Environmental Control
Maryland: Maryland Department of the Environment
New York: MS4 regulated coverage areas are represented by municipal boundary and Census Urban Area boundaries
Pennsylvania: MS4 regulated coverage areas are represented by municipal boundaries
Virginia: Virginia Department of Conservation and Recreation
West Virginia: DEP Local Government enhanced area boundary is within MS4 regulated coverage areas within Maryland
Disclaimer: Do not reuse Chesapeake Bay Program logo



- EPA can estimate based on:
 - Boundaries
 - Additional controls
- Options for future MS4 areas

Other NPDES-Permitted Stormwater

Industrial

- EPA can estimate based on information on # permits and regulated acres

Construction

- EPA can estimate based on regulated acres or land use change
- Could set 0 WLA, and sources would offset net change in loads from construction and post-construction land uses

For All Stormwater:

- Identify additional controls that will be required on areas subject to industrial stormwater permits by 2017, 2025

Questions?

Katherine Antos, Coordinator
Water Quality Team
U.S. EPA Chesapeake Bay Program Office

Antos.Katherine@epa.gov

(410) 295-1358

For More Information on the Bay TMDL:
<http://www.epa.gov/chesapeakebaytmdl/>

For More Information on Executive Order 13508:
<http://executiveorder.chesapeakebay.net/>

