

Hi there!

Michelle Williams

WQGIT Staffer

WWTWG, USWG, Toxic Contaminants Workgroup

A little about me...

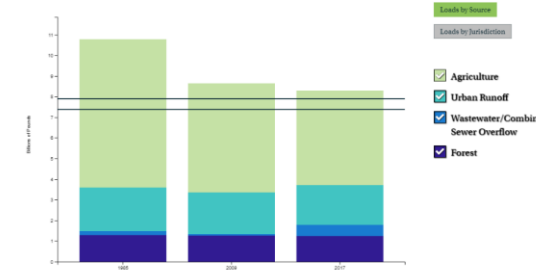
- B.A., Biology from St. Mary's College of Maryland (2016)
 - Minor: environmental studies
 - Aka summer camp with homework
- Chesapeake Conservation Corps, Anne Arundel County Watershed Protection and Restoration Program (2016 – 2017)
 - Stormwater BMPs
 - Stream restoration
- WQGIT staffer since February 2017
- Forever concerned with social equity
 - Aka really fun at parties



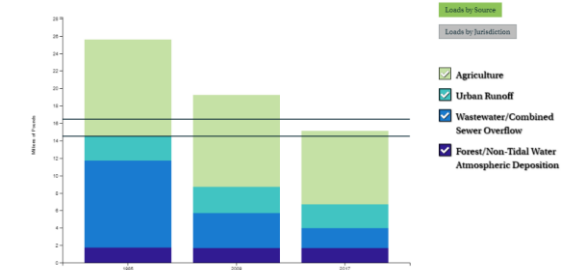
WQGIT Highlights

- Water Quality Goal Implementation Team:
 - Midpoint Assessment
 - Phase 6 Modeling Tools, CAST
 - Phase III Planning Targets and Phase III WIP development

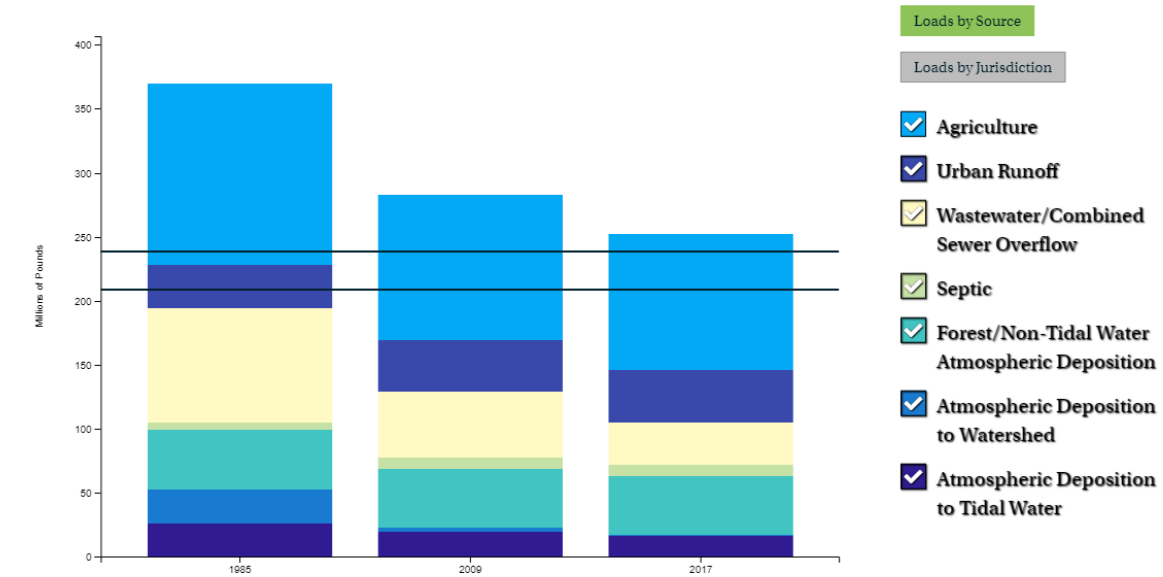
Modeled Sediment Loads to the Chesapeake Bay (1985-2025)
 Loads simulated using Watershed Model (Phase 5.3.2) and jurisdiction-reported data on wastewater discharges.



Modeled Phosphorus Loads to the Chesapeake Bay (1985-2025)
 Loads simulated using Watershed Model (Phase 5.3.2) and jurisdiction-reported data on wastewater discharges.



Modeled Nitrogen Loads to the Chesapeake Bay (1985-2025)
 Loads simulated using Watershed Model (Phase 5.3.2) and jurisdiction-reported data on wastewater discharges.



Workgroup Highlights

- Wastewater Treatment Workgroup
 - 2025 Wastewater scenarios for Phase III WIPs
 - Crediting boat pump-out practices in the Watershed Model
- Urban Stormwater Workgroup
 - Ecological aspects of stream restoration practices (Joint with Stream Health Workgroup)



More Highlights

- Toxic Contaminants Workgroup
 - Outreach and education on PCB fish consumption advisories
 - Excellent work from CRC StREAM summer interns (Ashley Duncan, Mackenzie Bodman, Ben Anderson)
 - Contaminants of Emerging Concern (e.g. PFOS, endocrine-disrupting compounds, microplastics, etc)
 - PCB Consortium proposal
 - BMP effectiveness for PCB removal



FISH WARNING:
Catch, Share & Prepare Responsibly

Choose Safer Fish
Keep the fish species with less pollution.

Share Safer Fish
Polluted fish may cause cancer, developmental issues and other harm to pregnant women, children and adults.

Prepare Fish Safely
Cut off the skin and fat before cooking. Discard the oil after cooking.

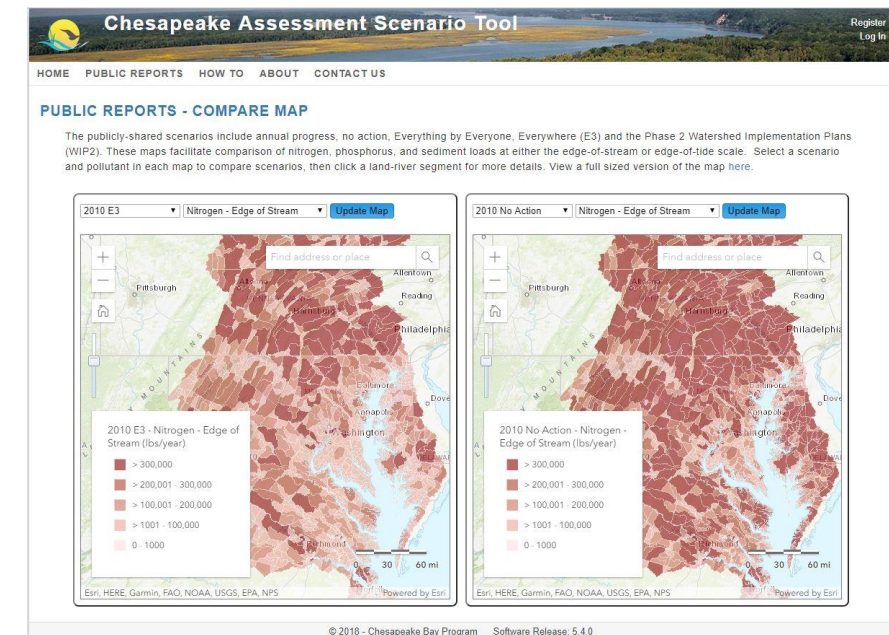
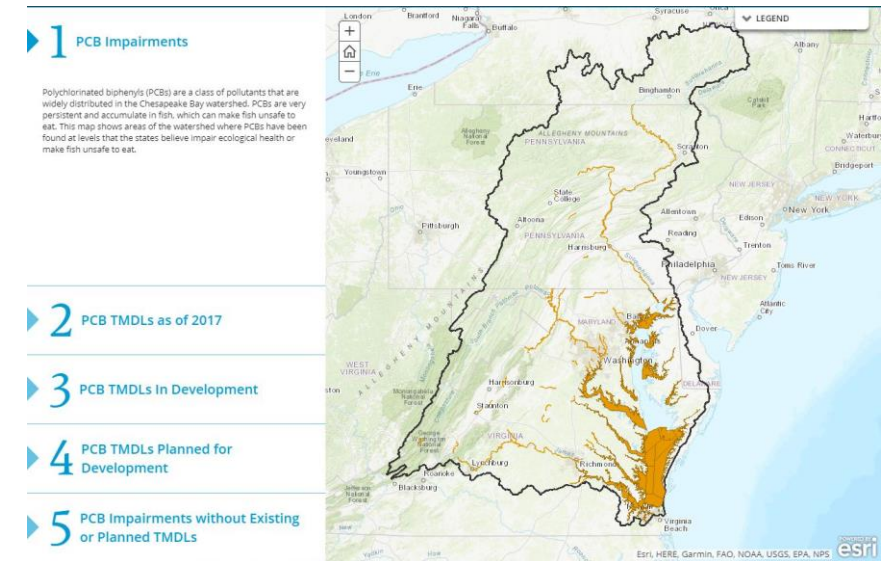
Enjoy Fish Safely
Follow local advisories. Eat the suggested portion size. Do not exceed the suggested frequency.

For Your Friends' and Family's Health
Go to [\[redacted\]](#) for more information about safe fish consumption where you live.



Professional Development

- Spatial Data and GIS
 - PCB TMDL story map: <http://tinyurl.com/PCBStoryMap2018>
- CAST scenarios for BMP co-benefits
 - Co-benefits scoring system as decision support for scenario development
 - Use cases for Toxic Contaminants and SAV management
- Interests in Toxic contaminants, public health, environmental justice
 - Looking into EJ screen trainings, data science opportunities



What's next?

- The ongoing struggle for social justice
- Grad school: Environmental health, policy and environmental justice
 - Applying science for community health and sustainability
 - Masters first,
 - Possibly PhD? Stay tuned!

Thank you!
Questions?

Michelle Williams

Williams.michelle@epa.gov

410-267-5758