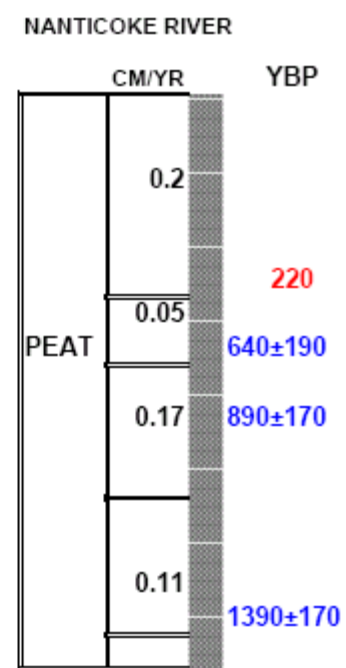
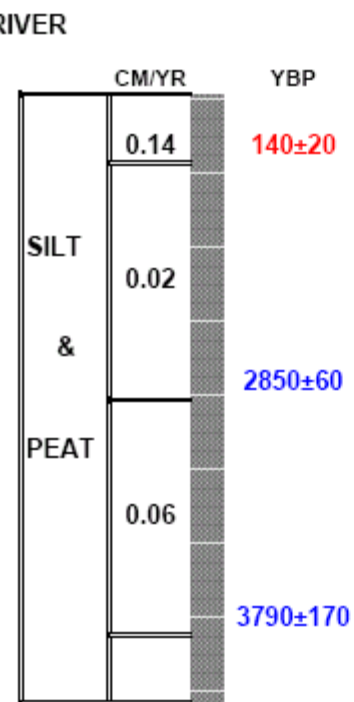
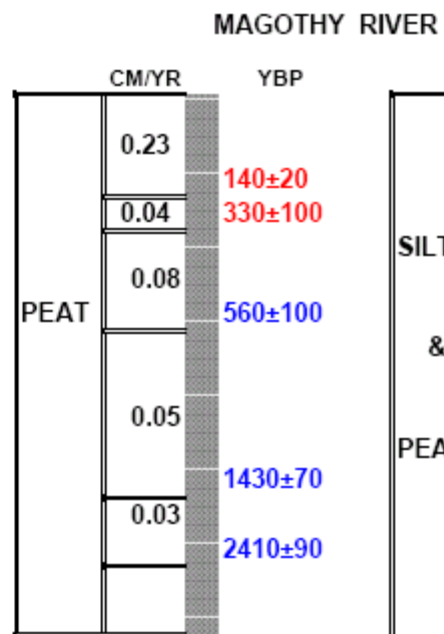
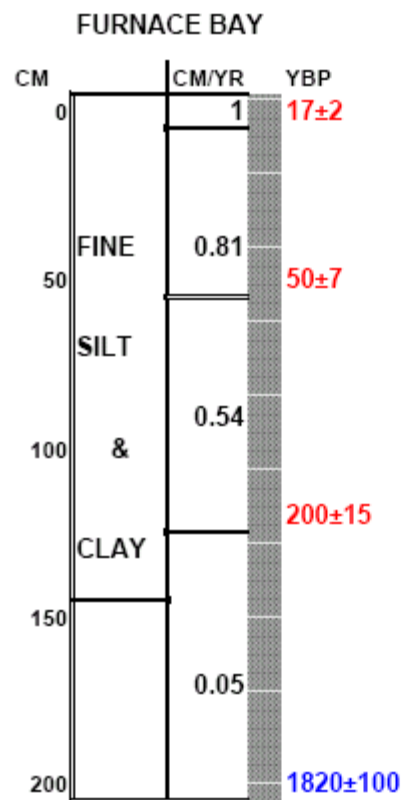


Average sedimentation rates in  
Chesapeake Bay  
 $\text{cm yr}^{-1}$

	Late Holocene		Pre-European		Post-European		Post/ Pre
	R	$\sigma$	R	$\sigma$	R	$\sigma$	
Entire Bay	0.07	0.05	0.06	0.05	0.19	0.12	3.2
Upper Bay (above Patuxent)	0.09	0.05	0.08	0.06	0.22	0.13	2.7
Lower Bay	0.03	0.01	0.02	0.00	0.12	0.08	6.0

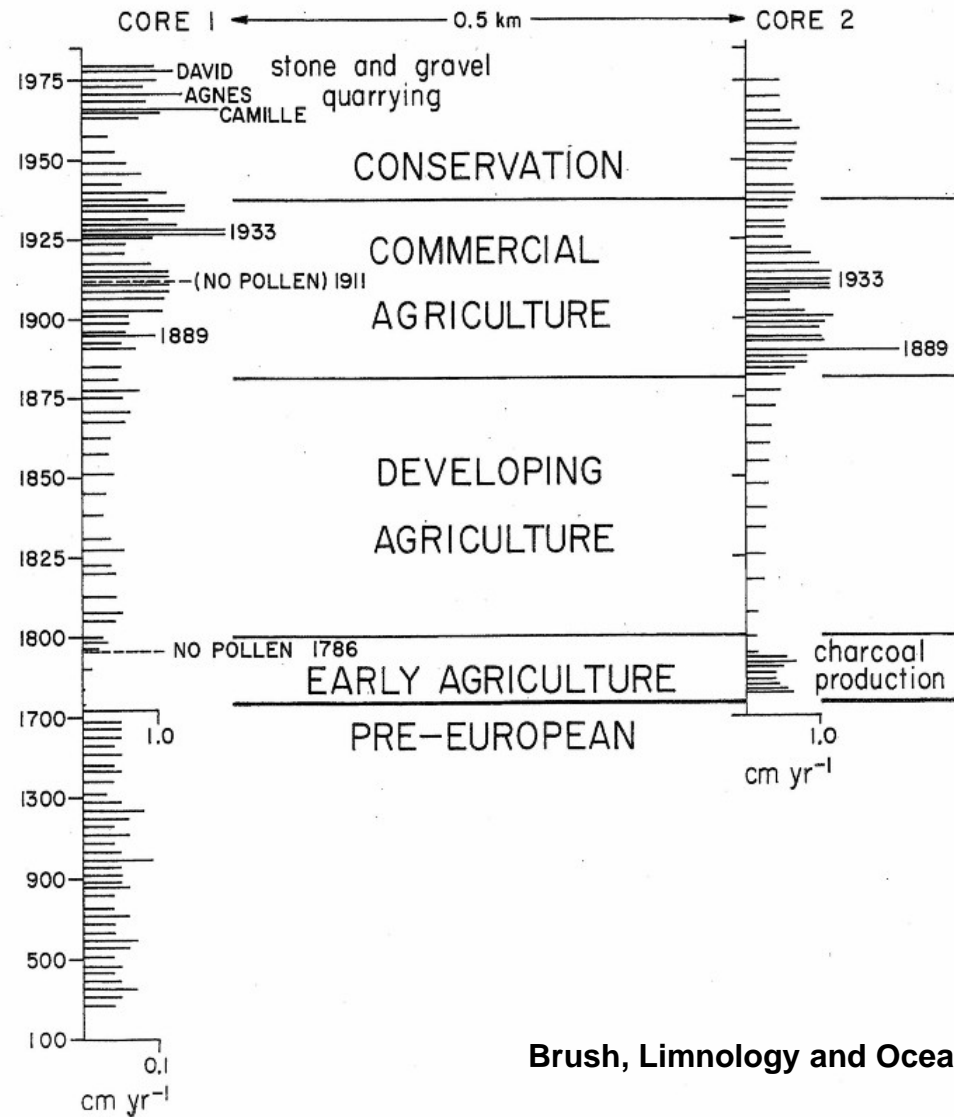


## MEAN SEDIMENTATION RATES IN CHESAPEAKE BAY

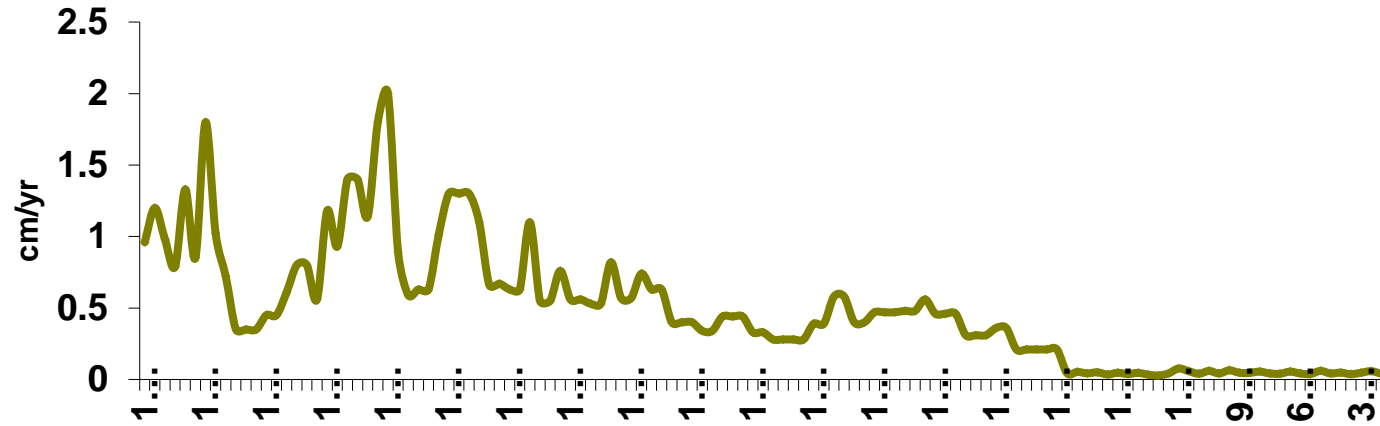
	POST-EUROPEAN cm/yr	PRE-EUROPEAN cm/yr
<b>MAIN STEM</b>	0.2	0.06
<b>TRIBUTARIES</b>		
CHESTER RIVER	0.34	0.02
SASSAFRAS RIVER	0.16	0.05
NANTICOKE RIVER	0.19	
ELK RIVER	0.27	
SEVERN RIVER	0.27	0.03
MIDDLE RIVER	0.08	0.08
BACK RIVER	0.17	0.05
POTOMAC RIVER	0.6	0.28
<b>MARSHES</b>		
MONIE BAY	0.27	0.19
JUG BAY	0.34	0.07
OTTER POINT CREE	0.95	0.02

SEDIMENTATION RATES IN THE POTOMAC ESTUARY												
					POLLEN		210 LEAD					
1634-1840					1840-1978		1878-1978					
CORE	CM/YR		G/SQ.CM/YR		CM/YR		G/SQ.CM/YR		CM/YR		G/SQ.CM/YR	
1	0.23±0.01		0.14±0.006		0.21±0.02		0.09±0.008		0.17±0.02		0.07±0.01	
4	>0.10		>0.07		0.56±0.05		0.27±0.02		0.79±0.09		0.47±0.06	
5	>0.22		>0.11		0.25±0.02		0.13±0.01		0.25±0.04		0.14±0.02	
9	>0.12		>0.06		0.48±0.04		0.23±0.02		0.67±0.06		0.35±0.03	
10	>0.19		>0.11		0.40±0.03		0.29±0.02		0.47±0.04		0.33±0.03	
14	>0.21		>0.15		0.22±0.02		0.17±0.01		0.43±0.05		0.42±0.05	
3					0.56±0.05		0.26±0.02		0.70±0.04		0.34±0.02	
7					>0.81±0.07		0.52±0.04		1.55±0.06		0.93±0.04	
15	>0.06		>0.05		0.67±0.06		0.52±0.04		1.74±0.12		1.51±0.11	

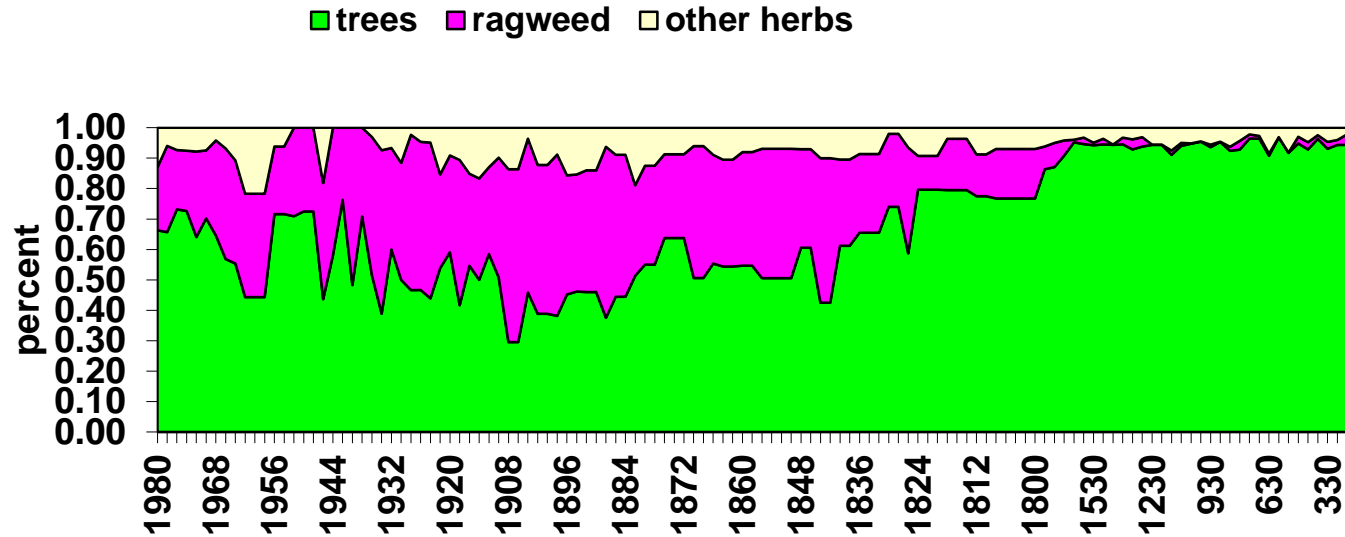
# FURNACE BAY SEDIMENTATION RATES

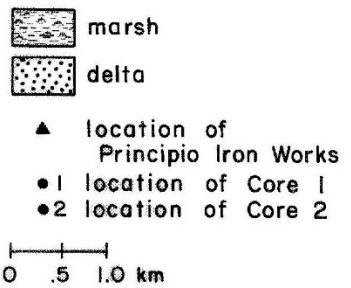
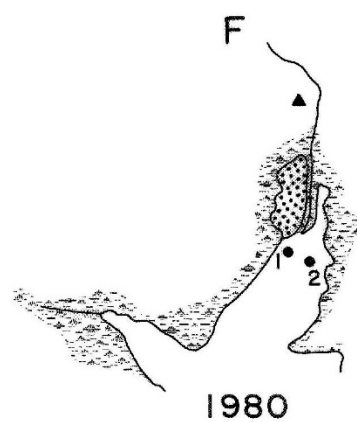
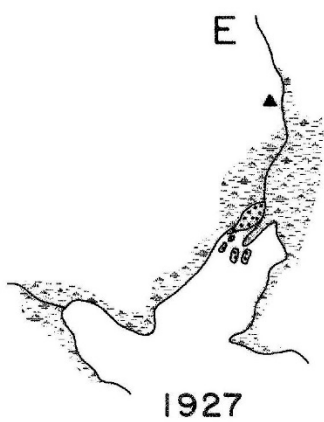
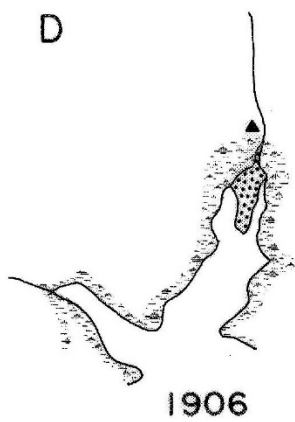
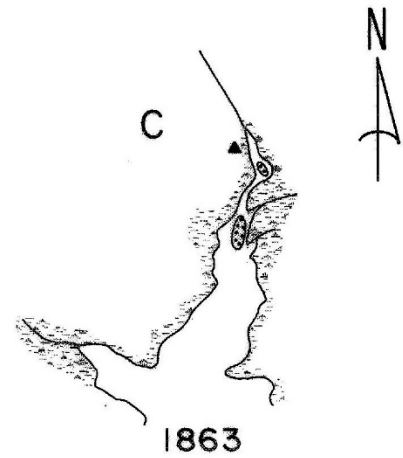
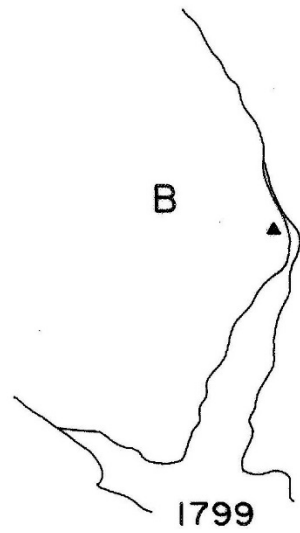
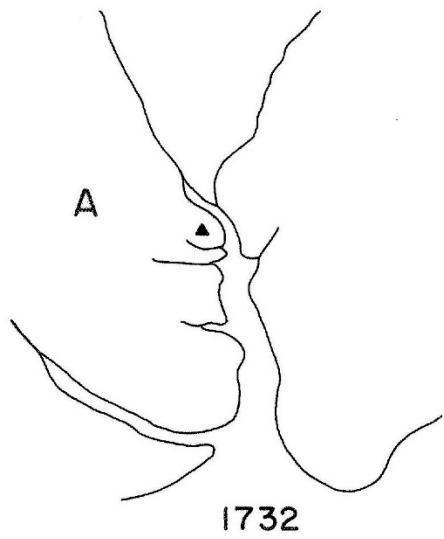


### Furnace Bay sedimentation rates

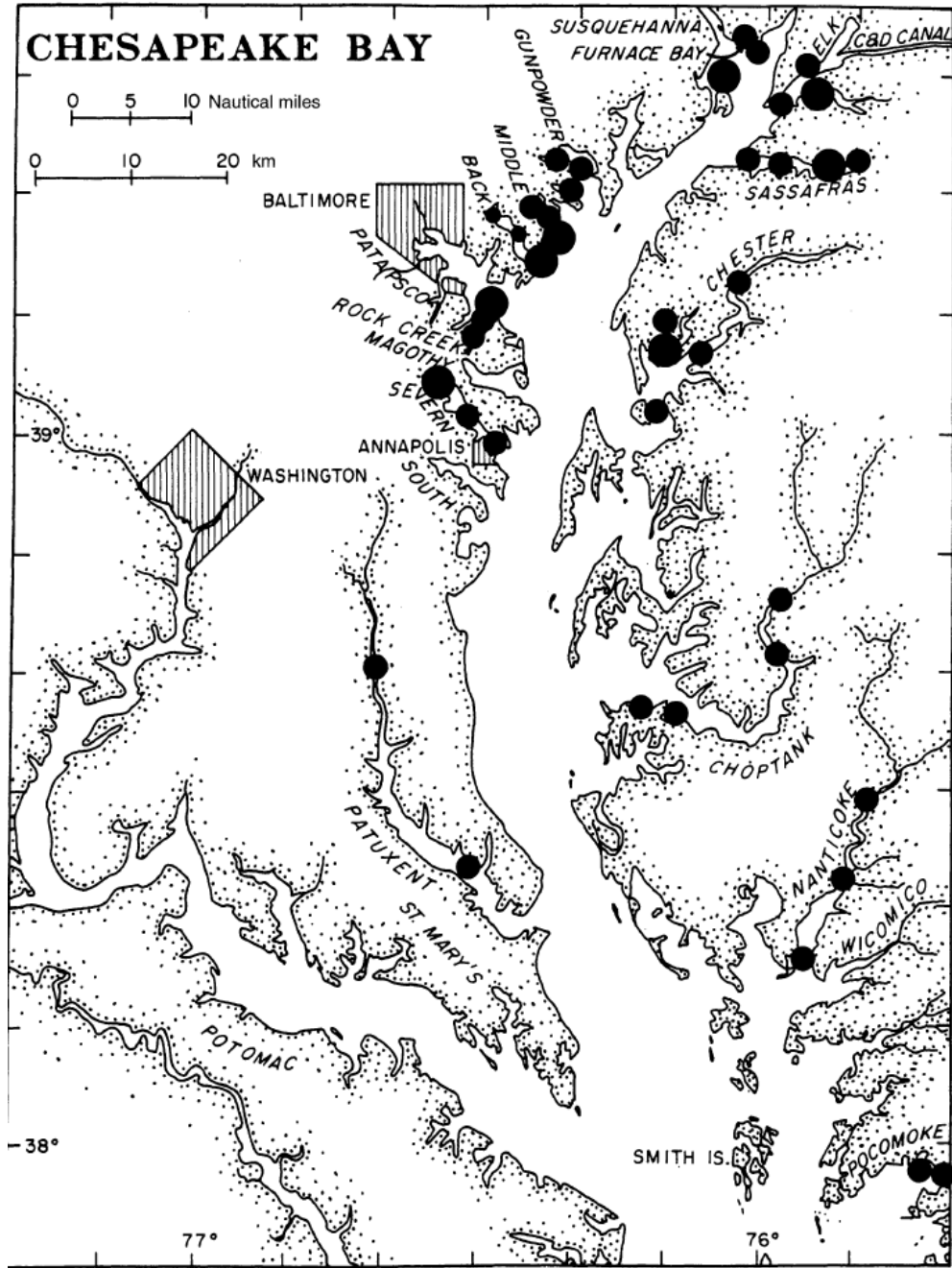
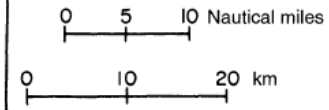


### Furnace Bay pollen representation of land use

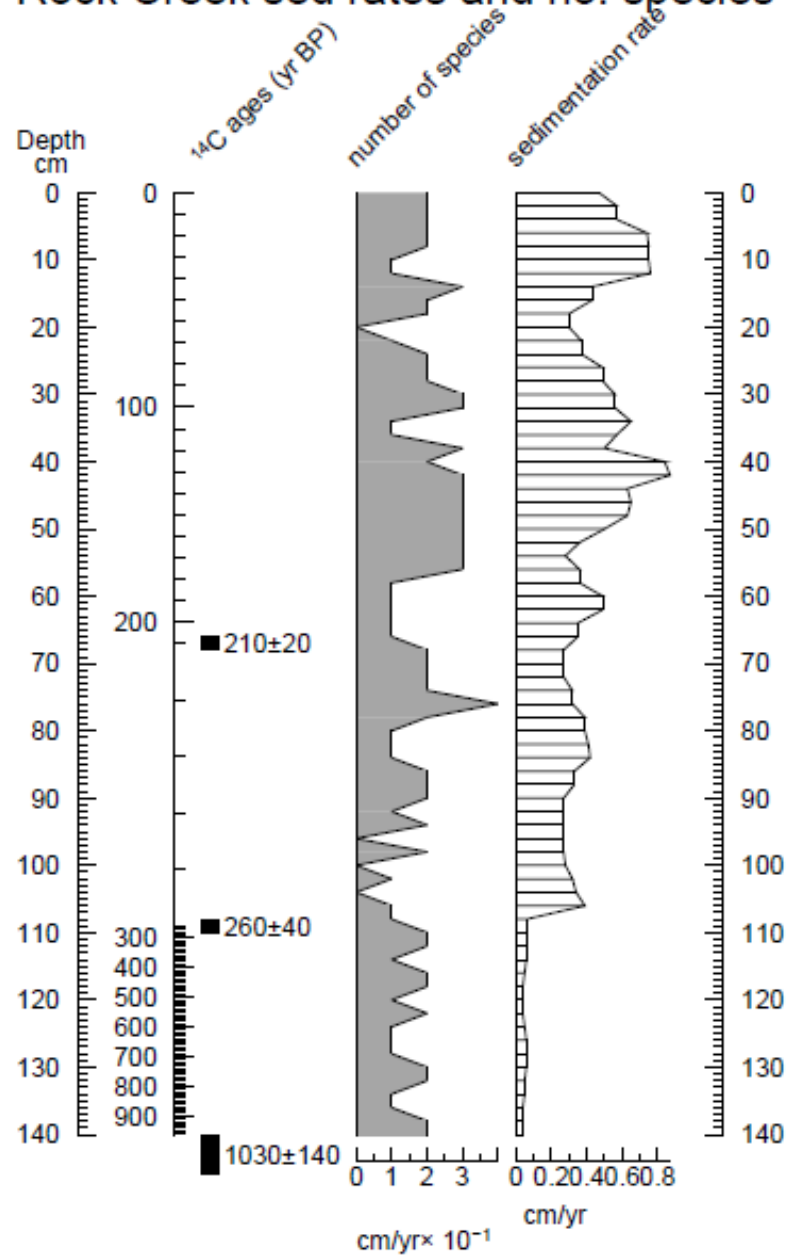




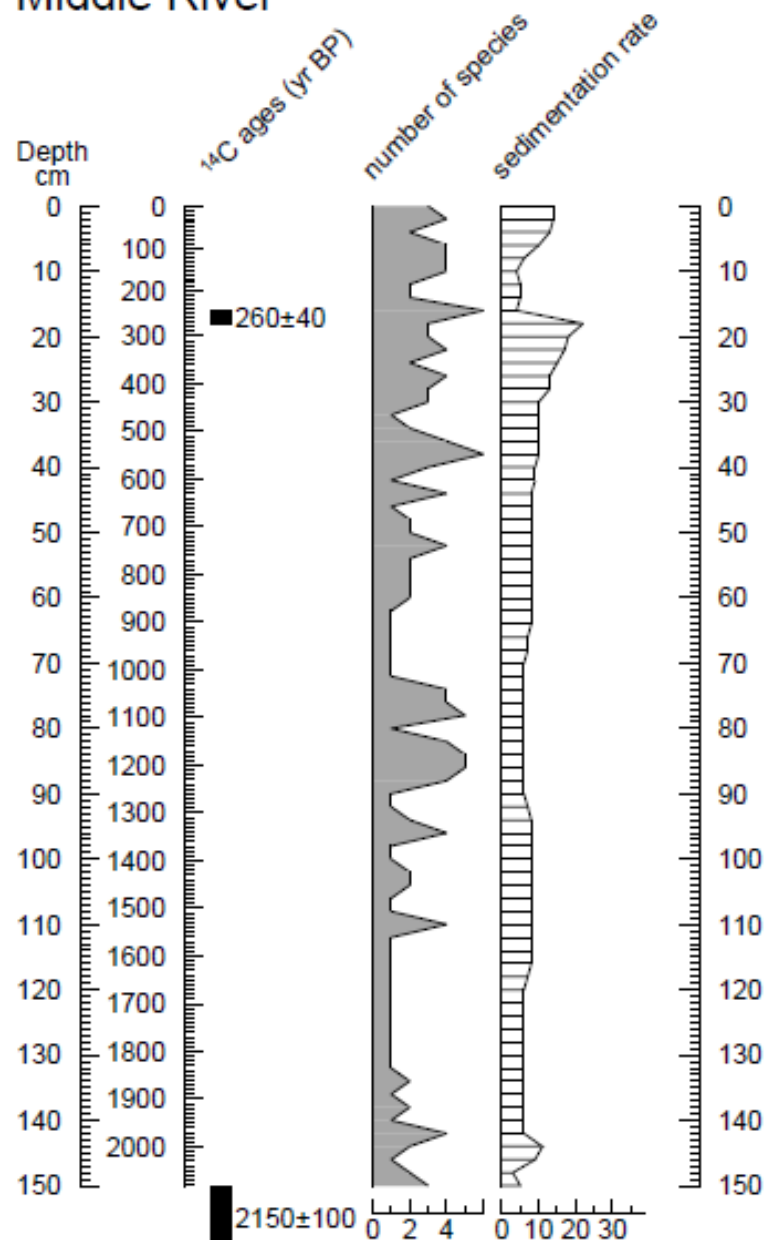
# CHESAPEAKE BAY



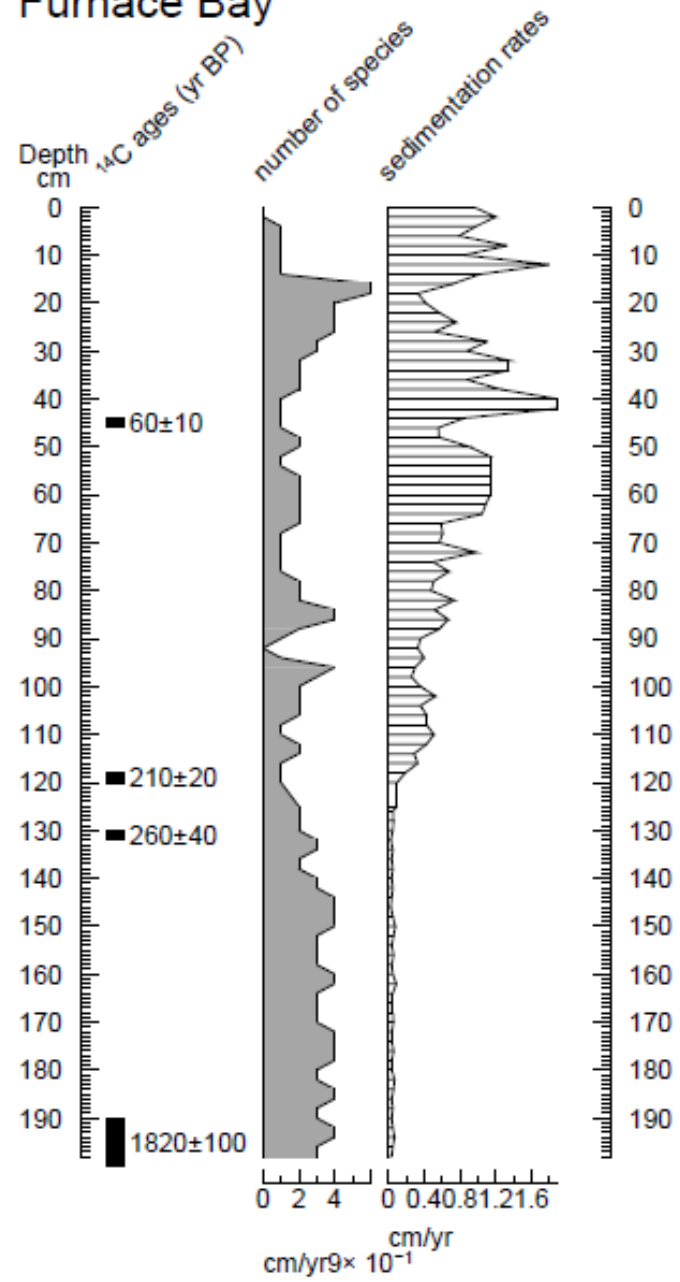
# Rock Creek sed rates and no. species



# Middle River

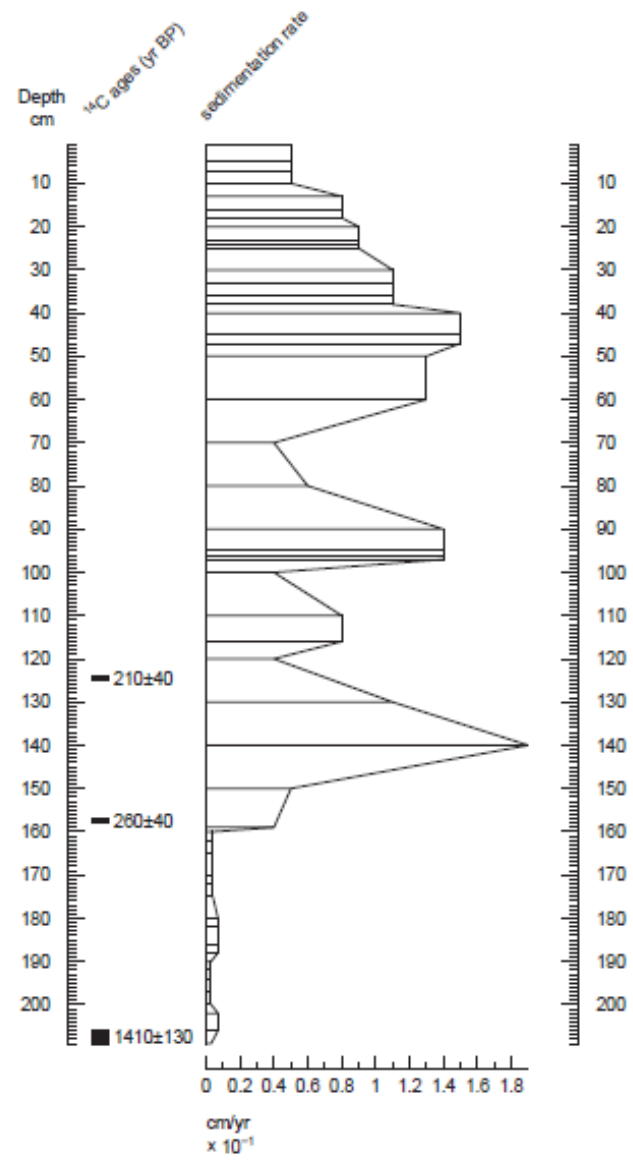


# Furnace Bay

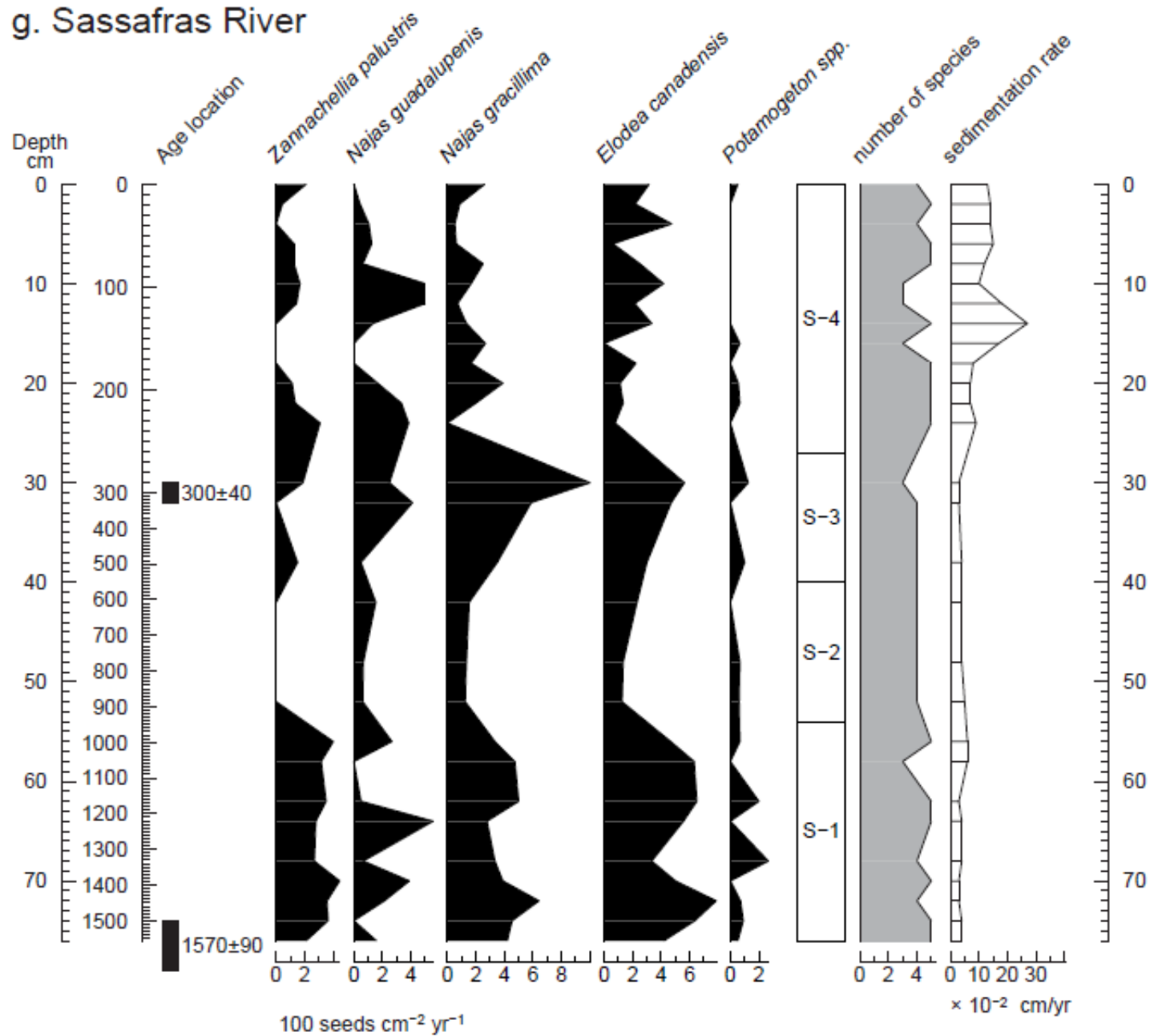


OPC 3

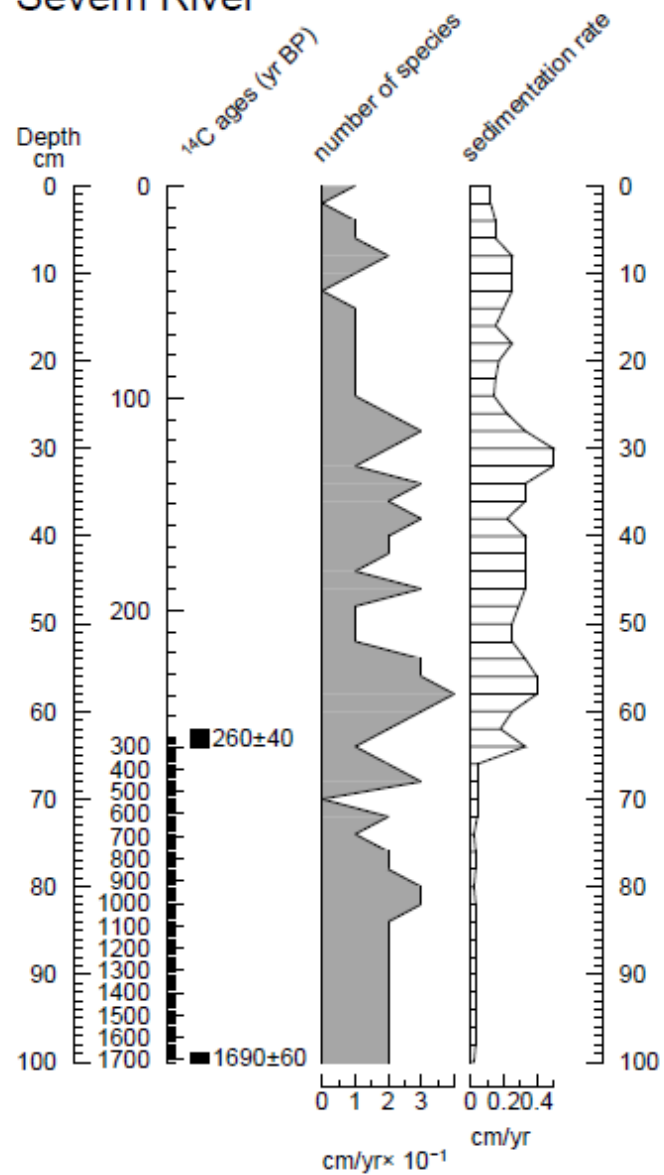
OPC 13



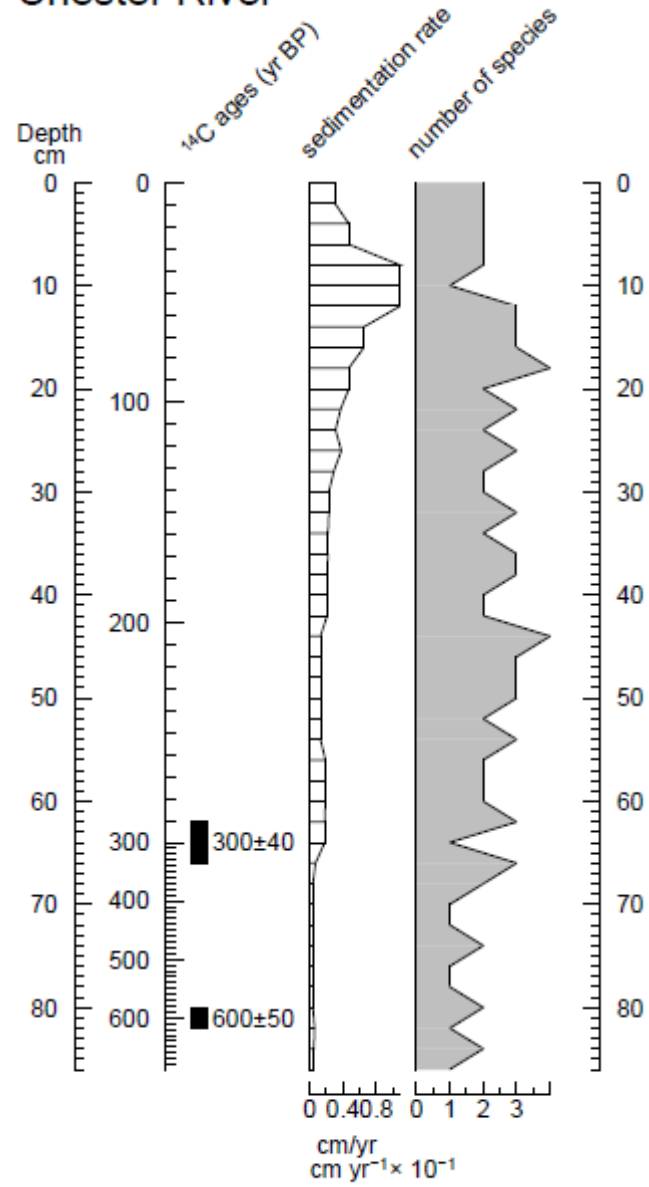
### g. Sassafras River



# Severn River

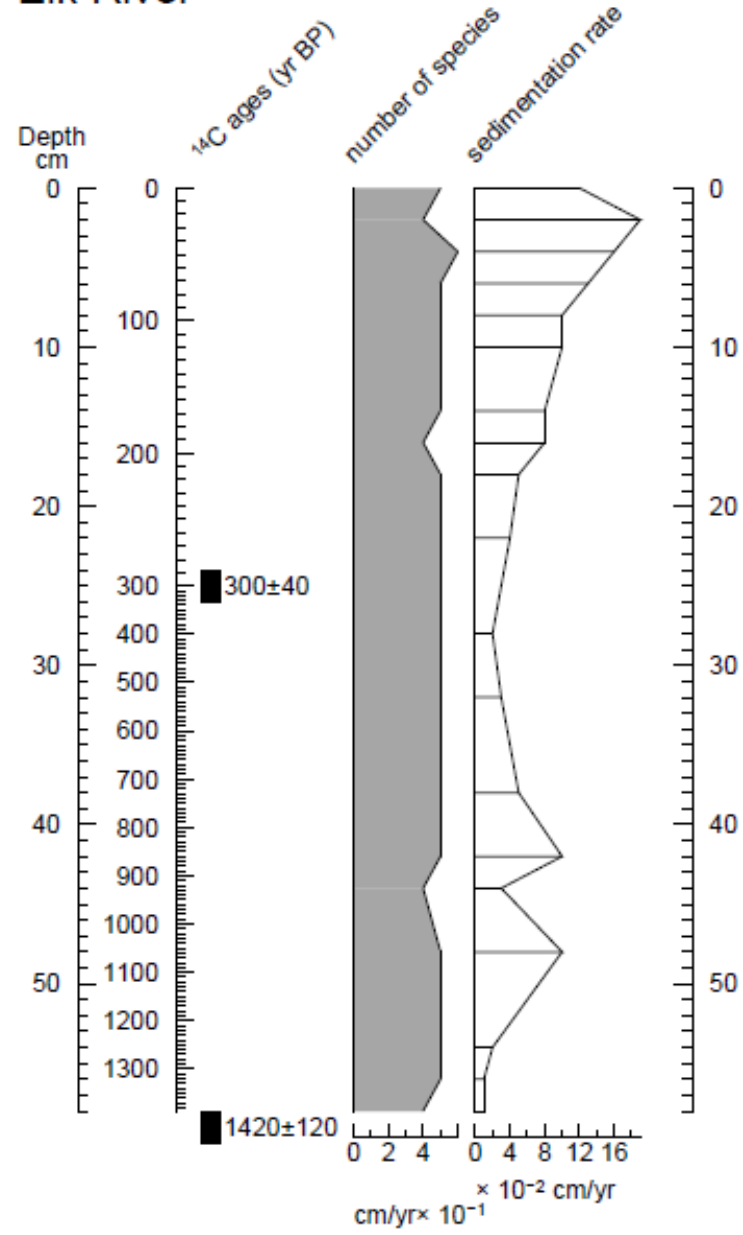


# Chester River



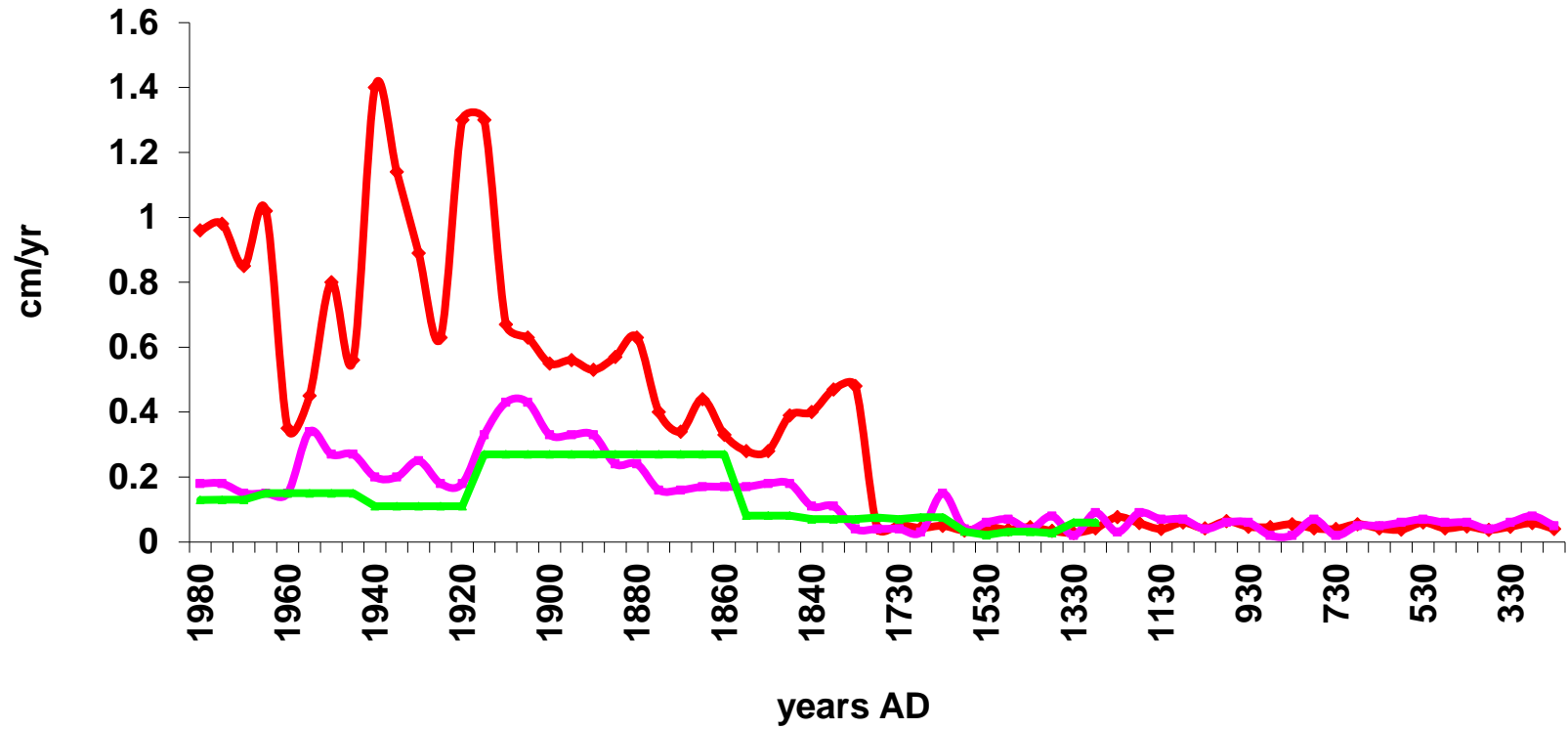


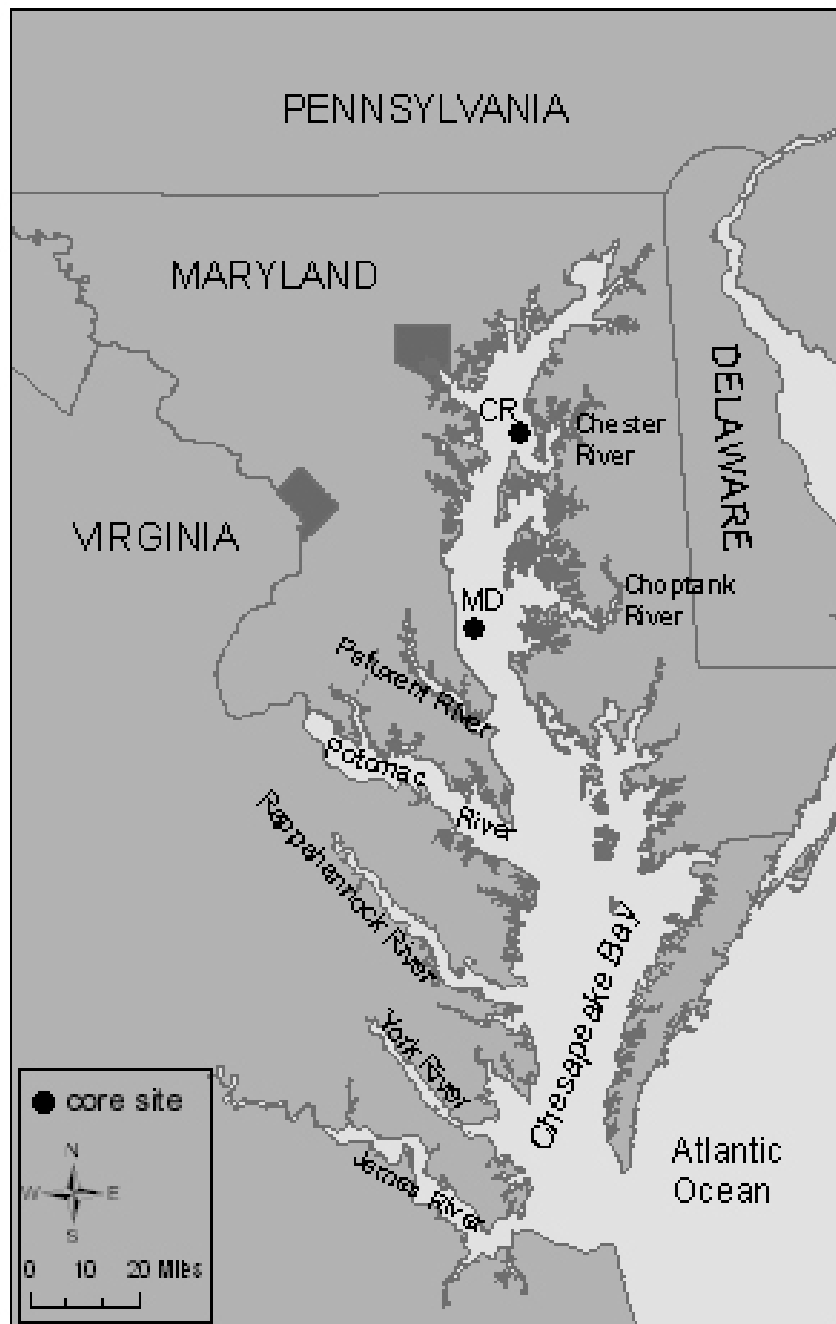
# Elk River



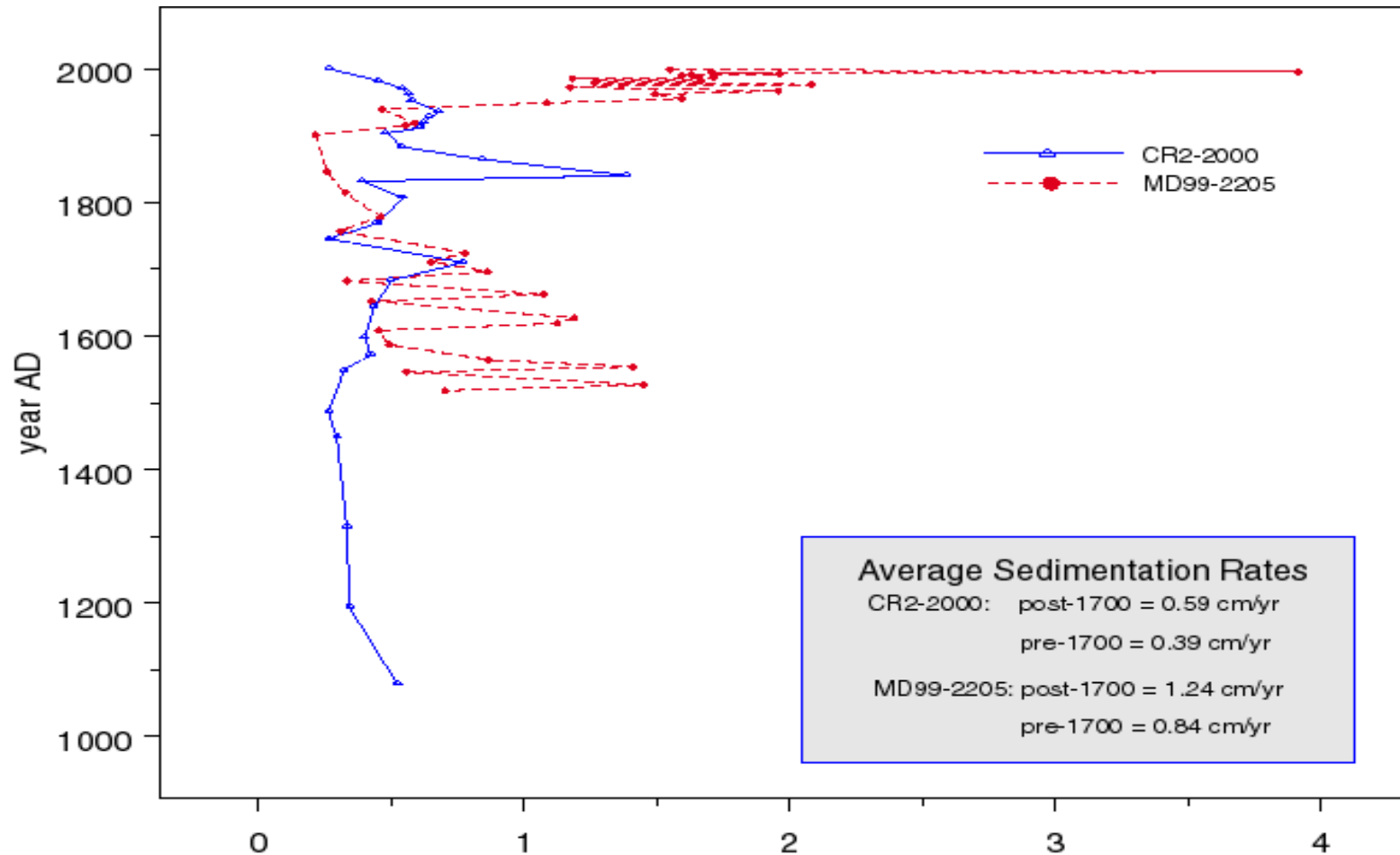
### sedimentation rates

—●— furnace    —●— magothy    —●— sassafras

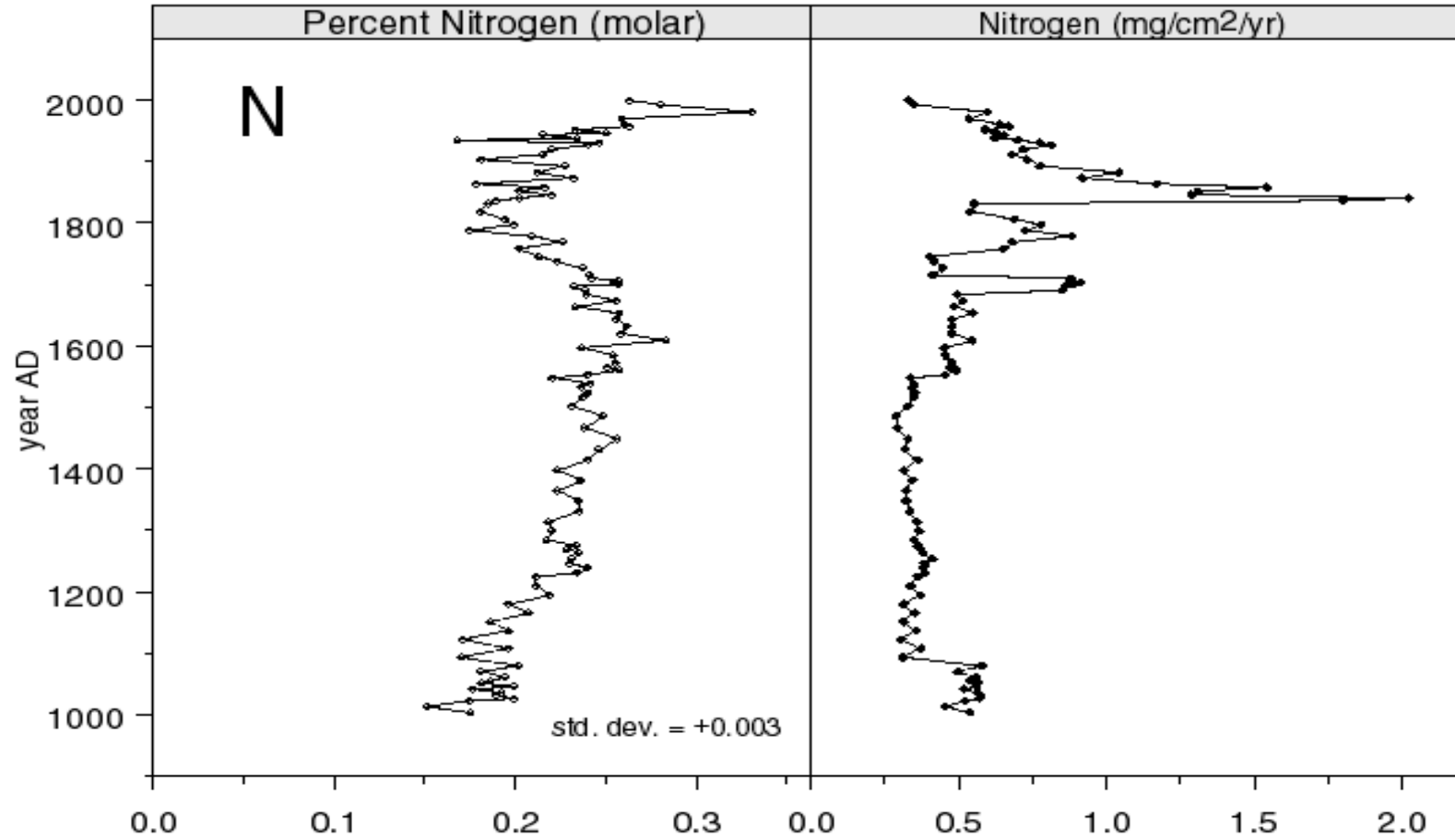




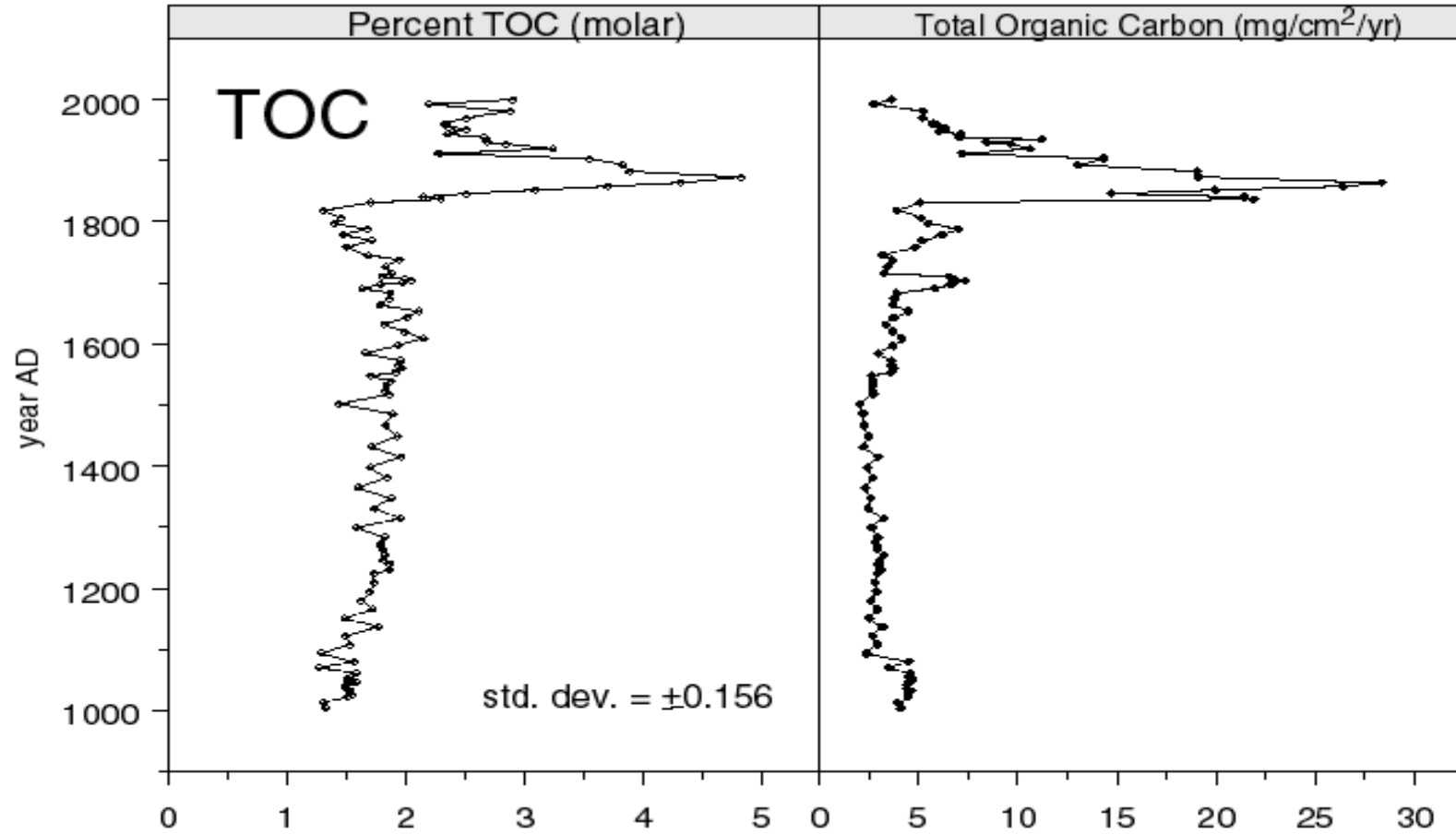
Sedimentation rates in Chesapeake Bay cores adjacent to Chester River and Parker Creek (from Arnold 2004)



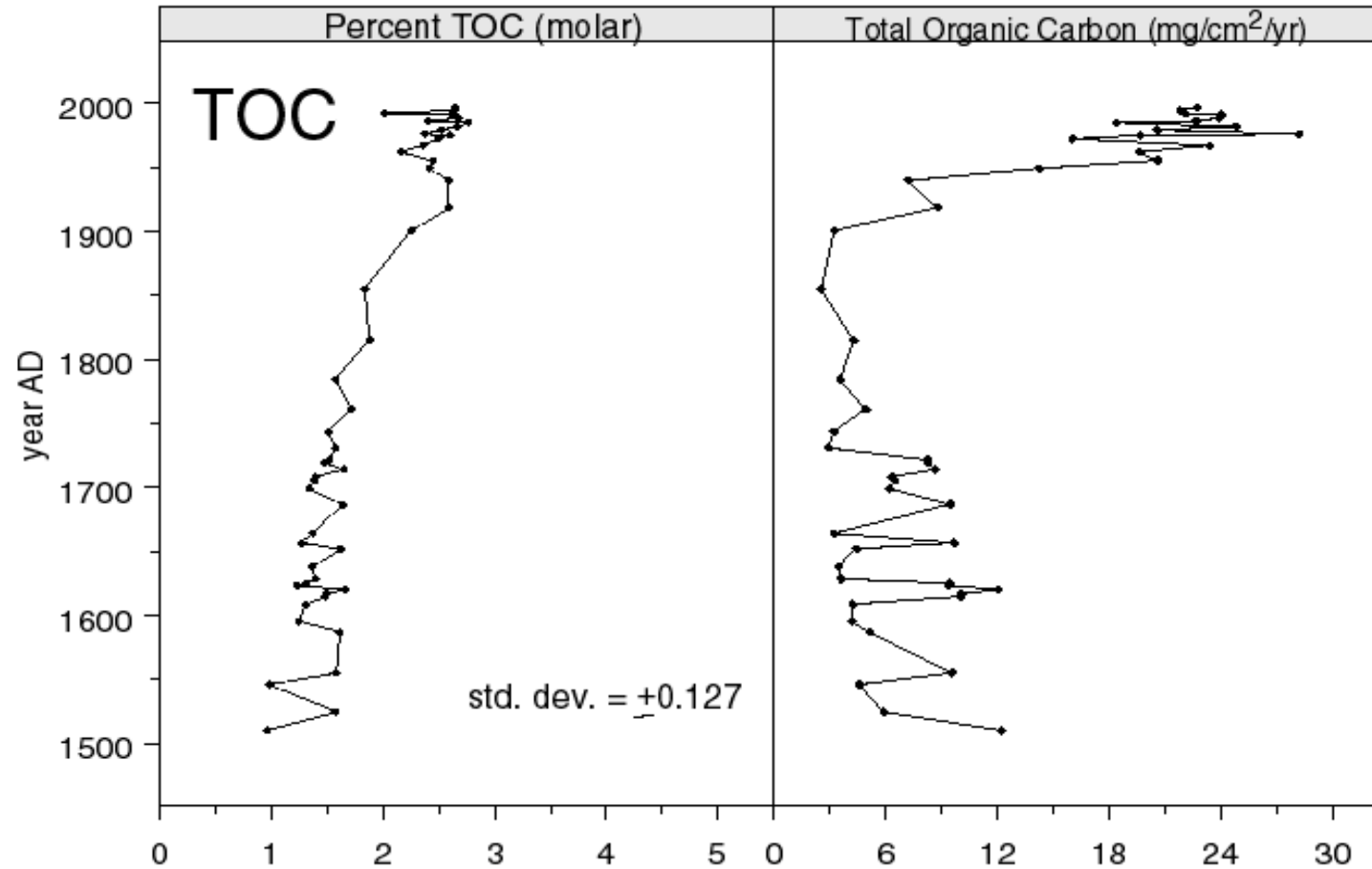
# Nitrogen profiles from core near mouth of Chester River (from Arnold 2004)



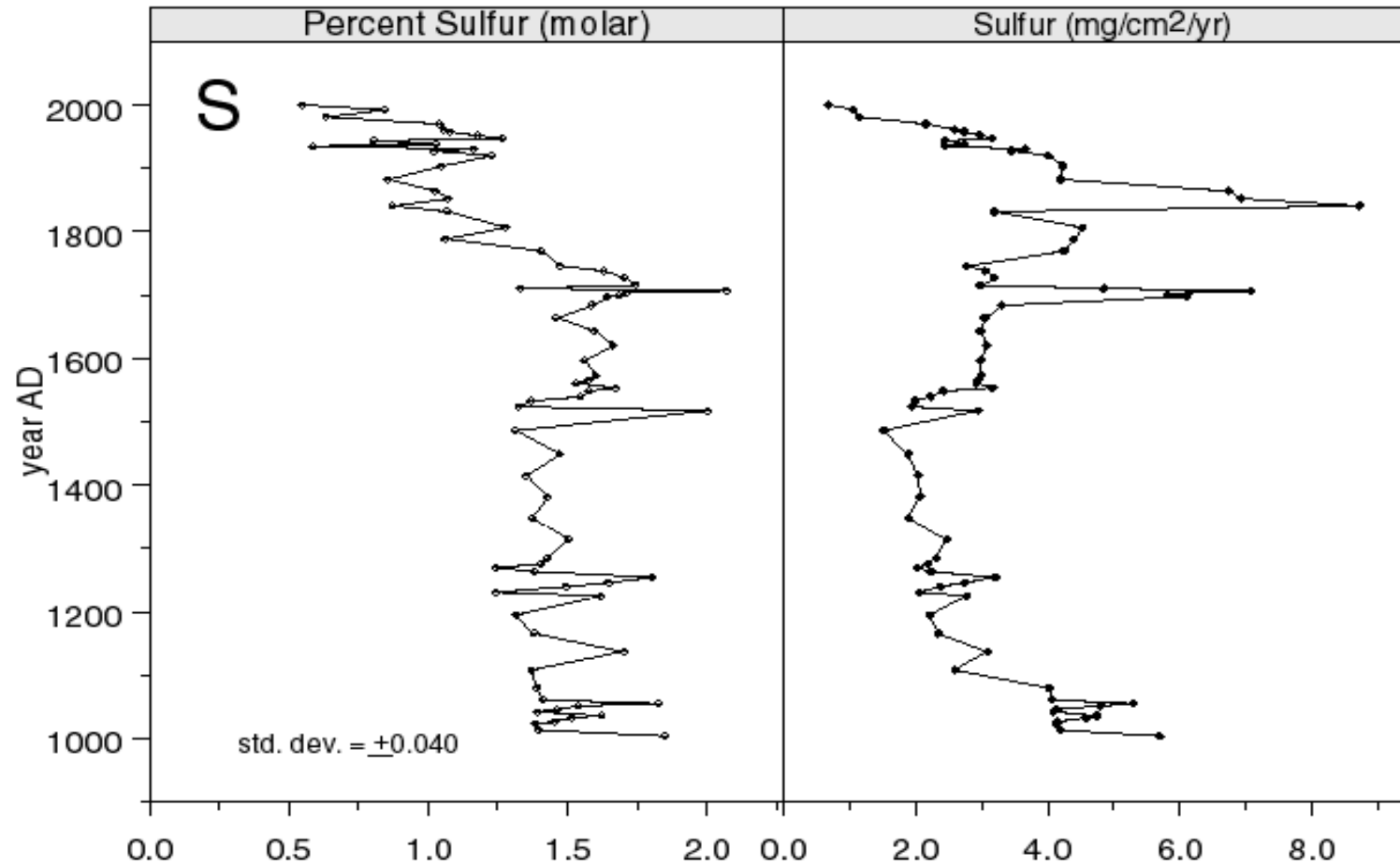
Total organic carbon in Chesapeake Bay core adjacent to the Chester River (from Arnold 2004)



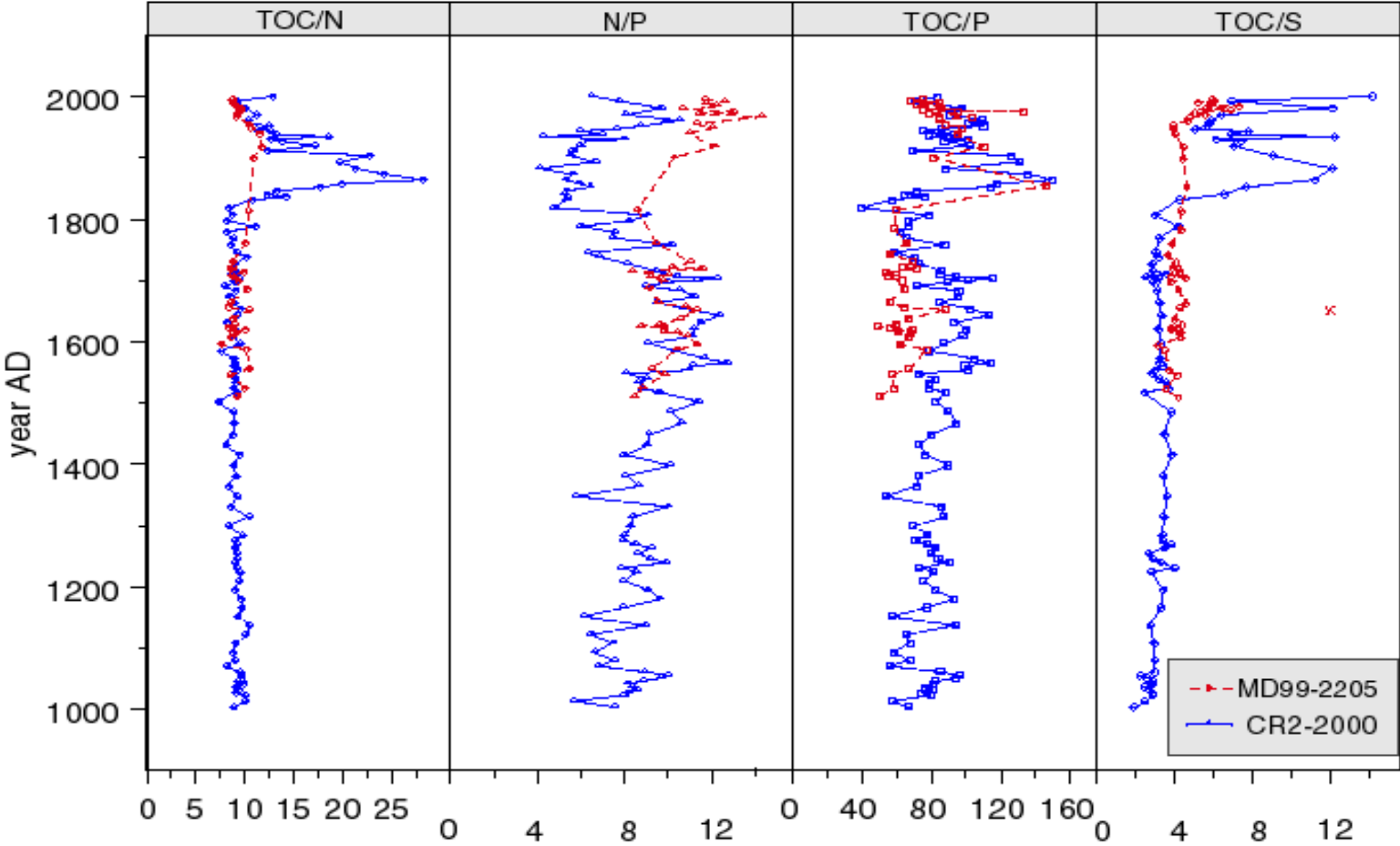
# Organic Carbon profiles from mid-Bay core (from Arnold 2004)

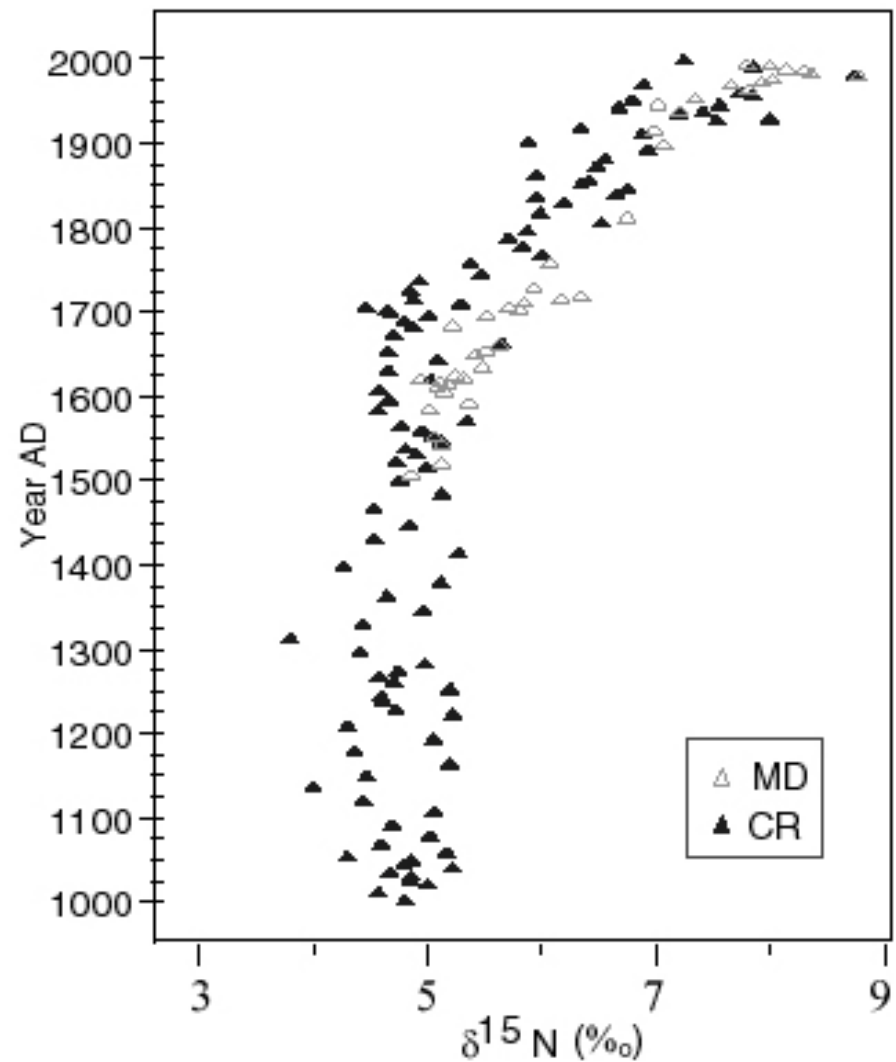
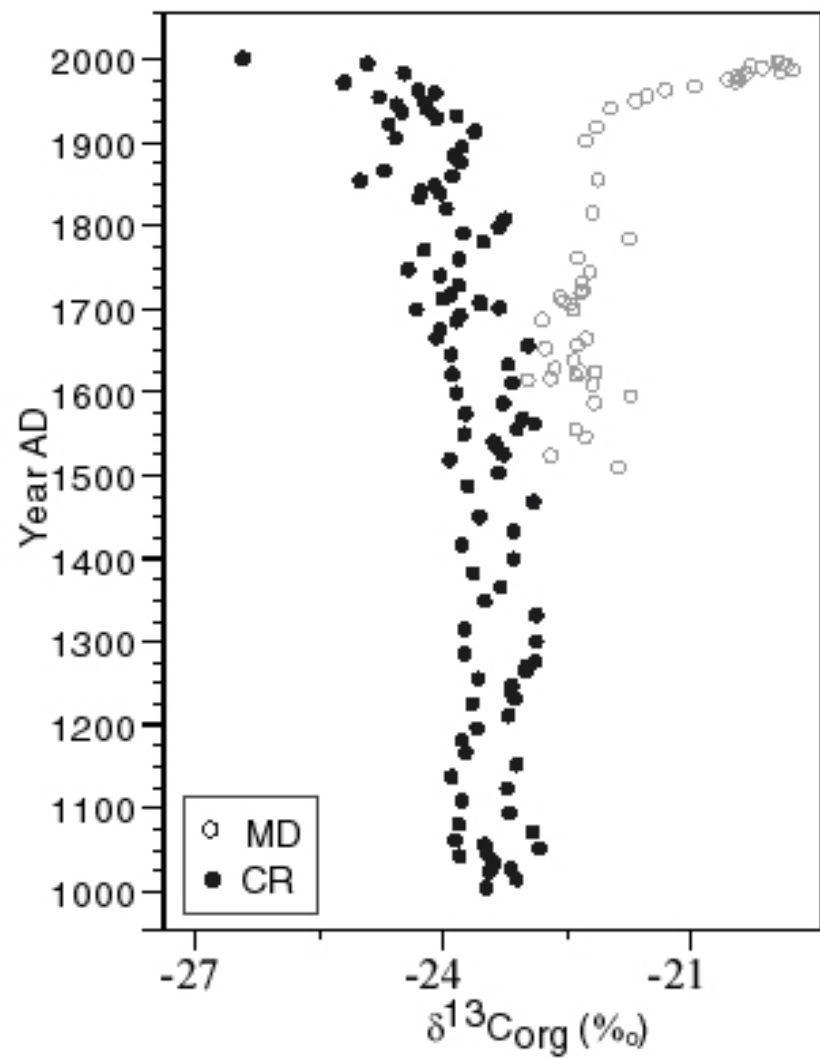


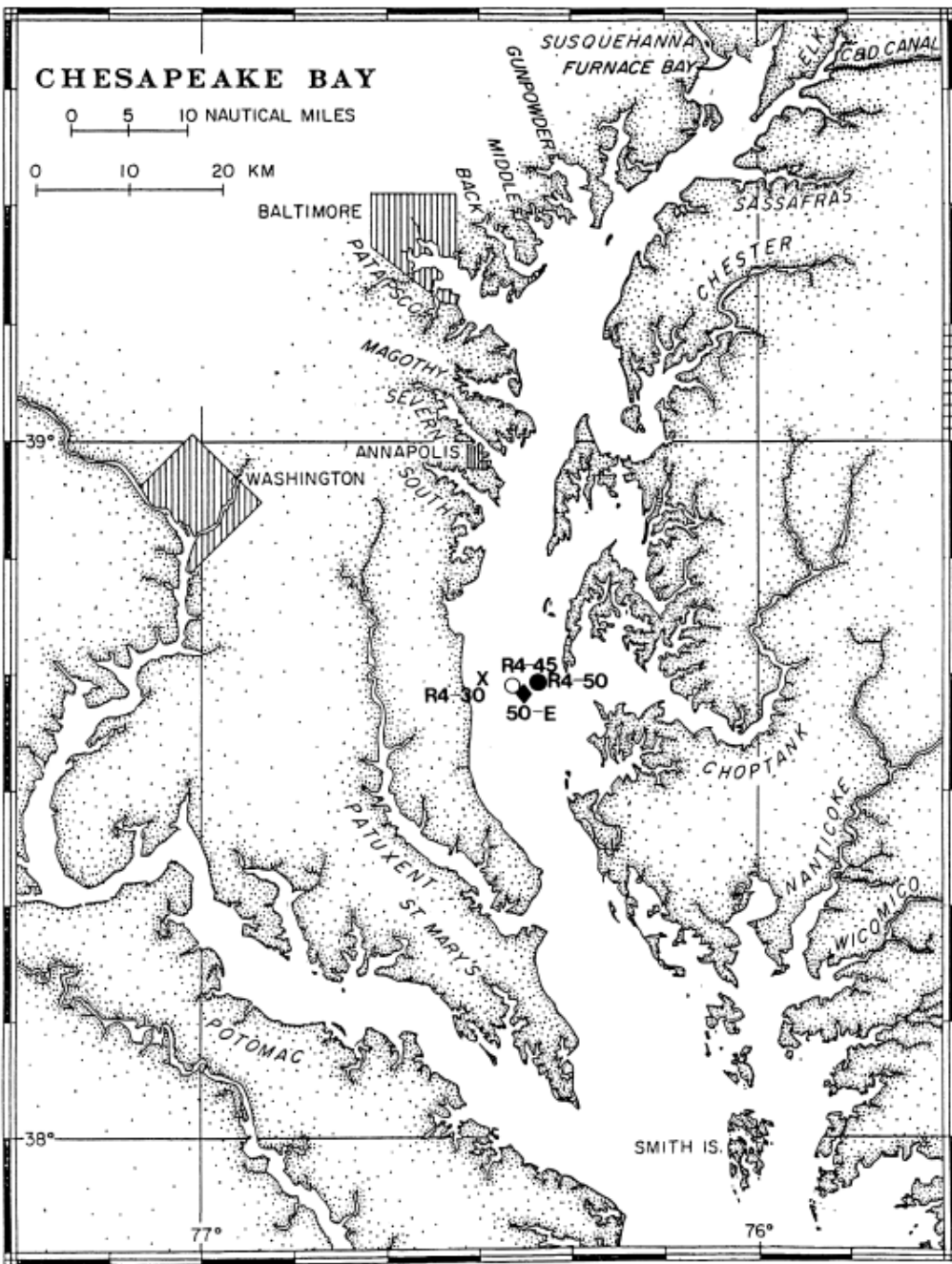
# Sulfur profiles outside of the mouth of the Chester River (after Arnold 2004)



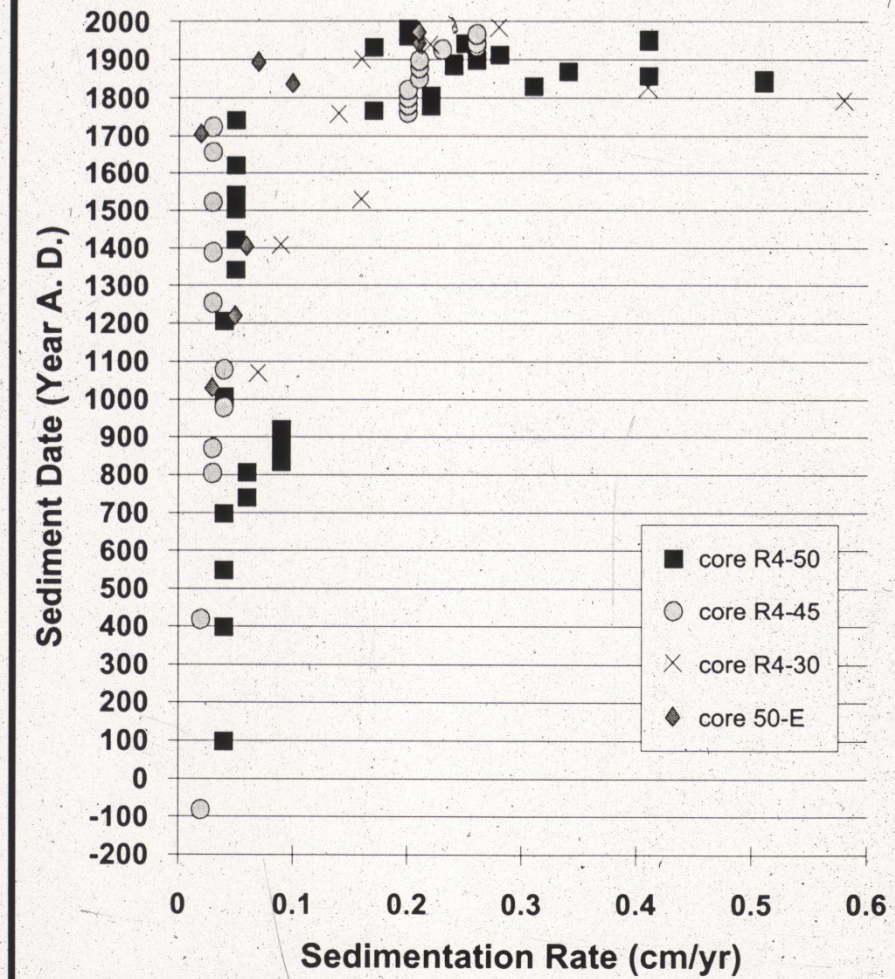
# Geochemical history of 2 Chesapeake Bay cores (after Arnold 2004)

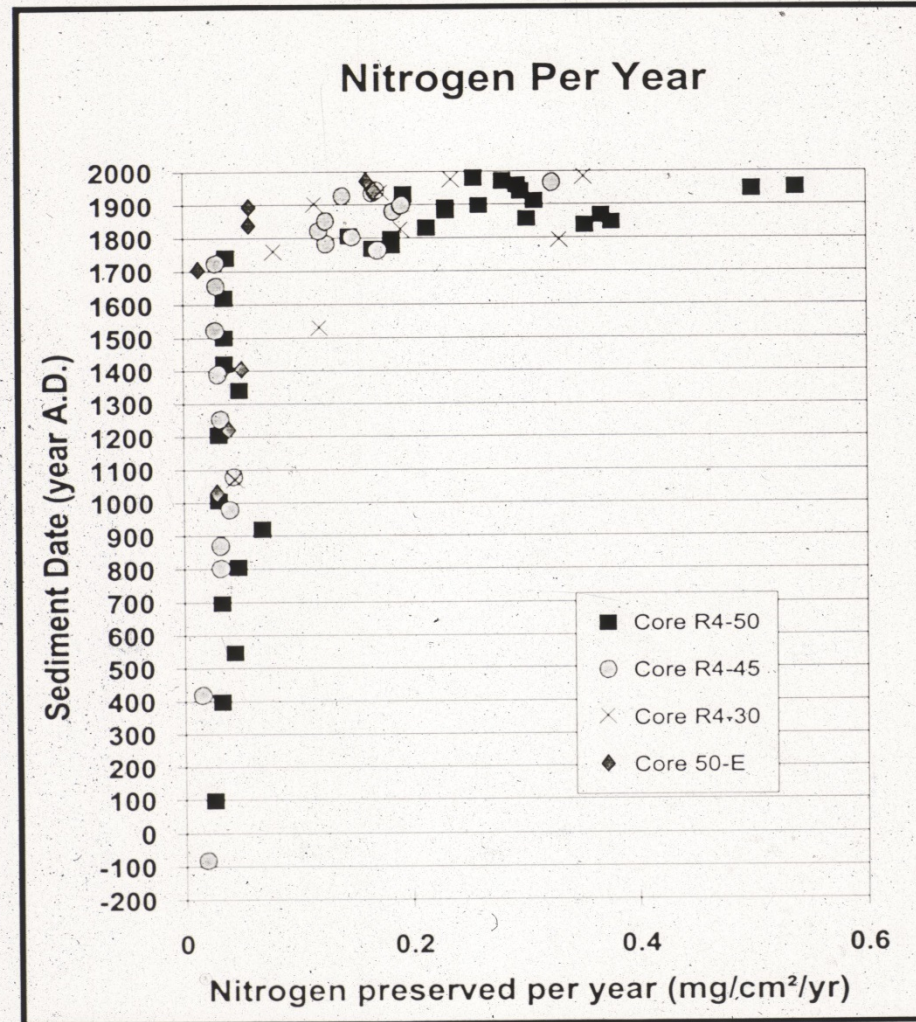




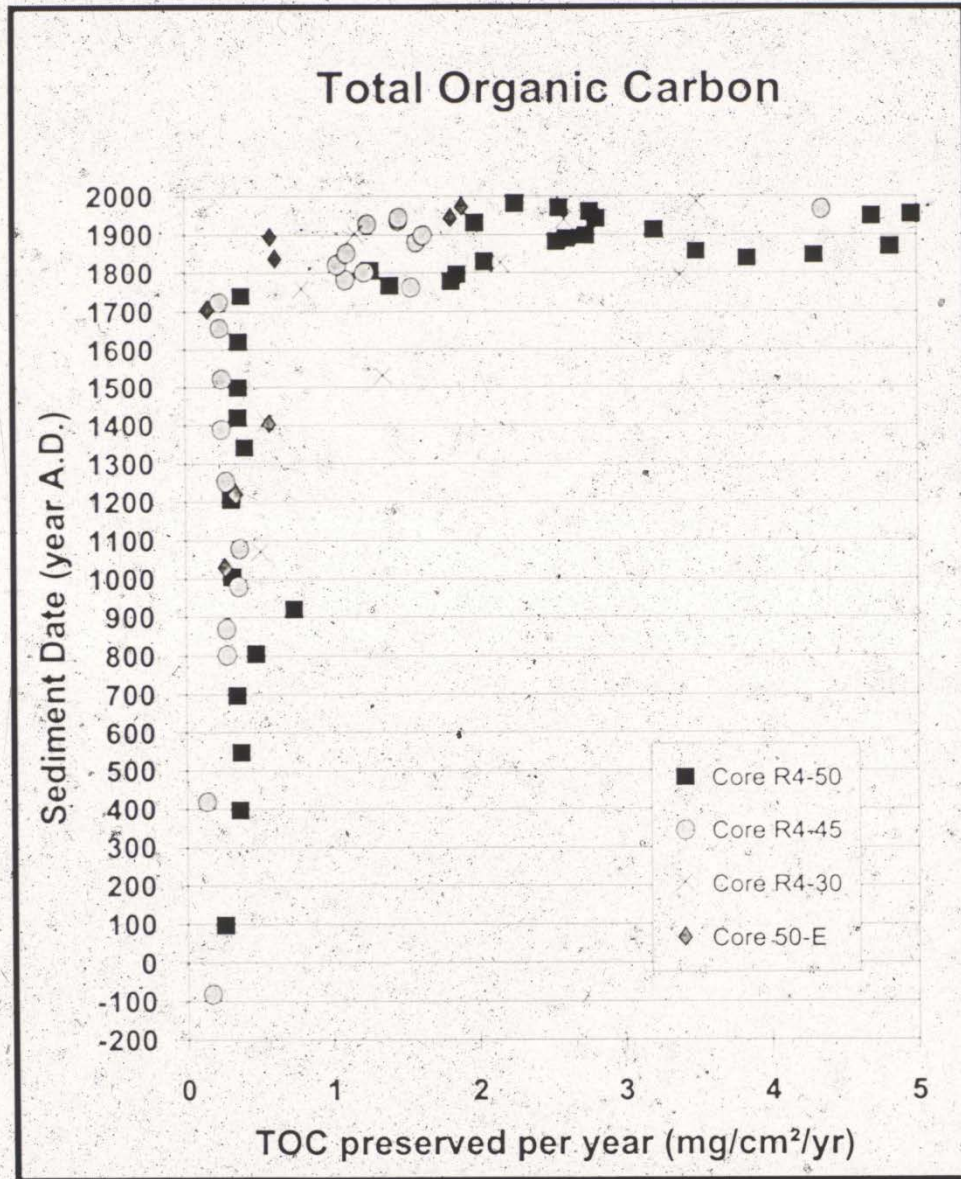


## Sedimentation Rates



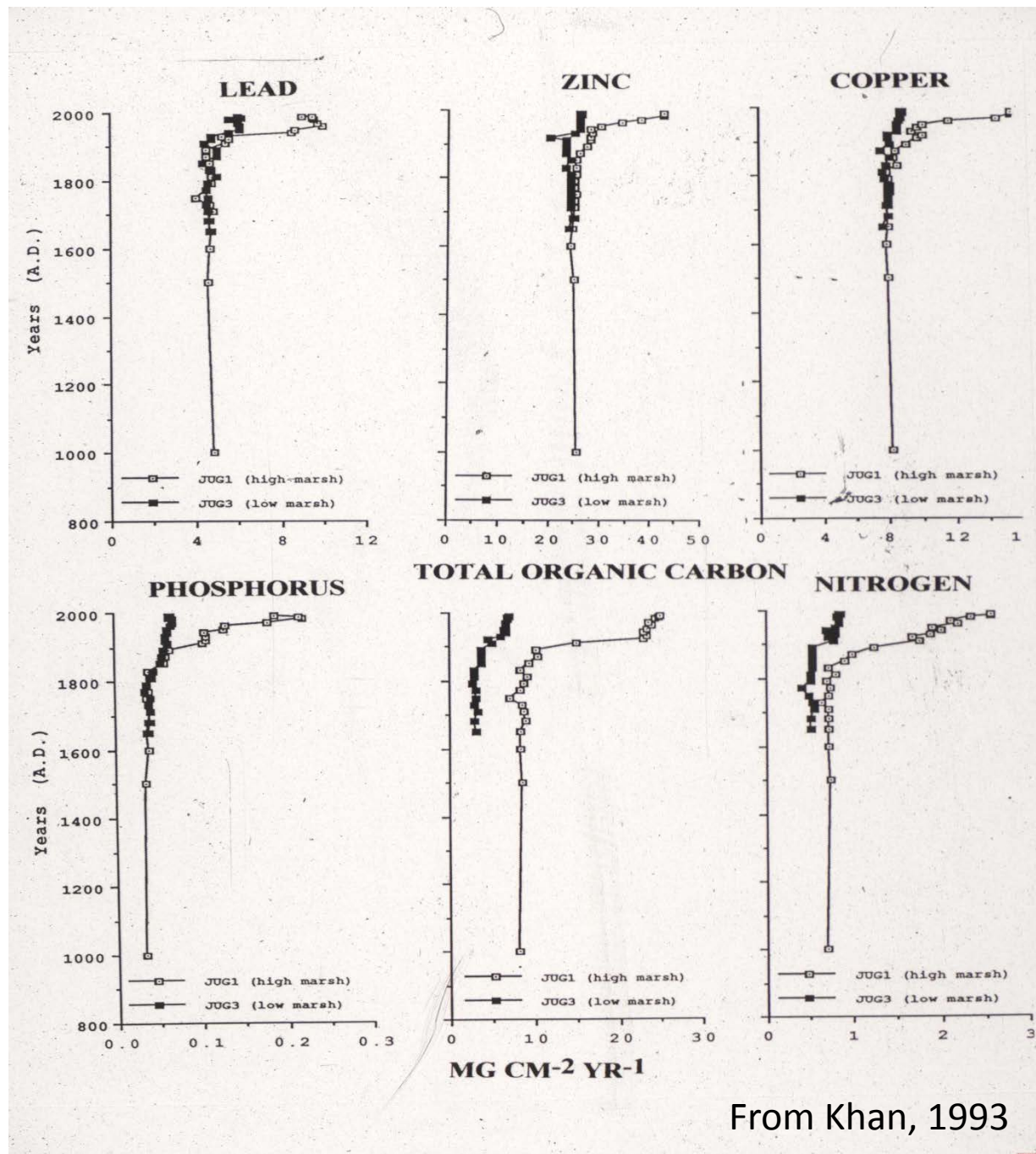


From Cooper, 1995



From Cooper, 1995





From Khan, 1993

# 1600 HISTORY OF VEGETATION AT UPPER SUSQUEHANNA (FURNACE BAY)

