



CRC Staffer Update

KATHERINE WARES

HEALTHY WATERSHEDS GOAL TEAM

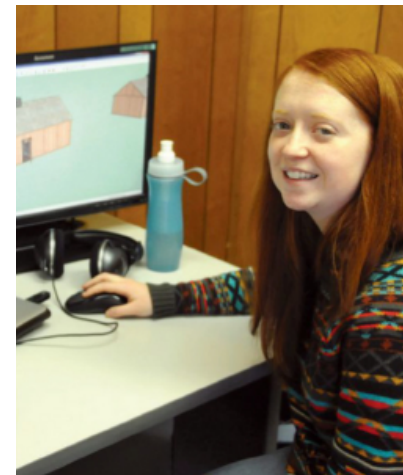
Personal Background

Education

- B.S. Environmental Science, Washington College
- M.S. Environmental Science, Towson University

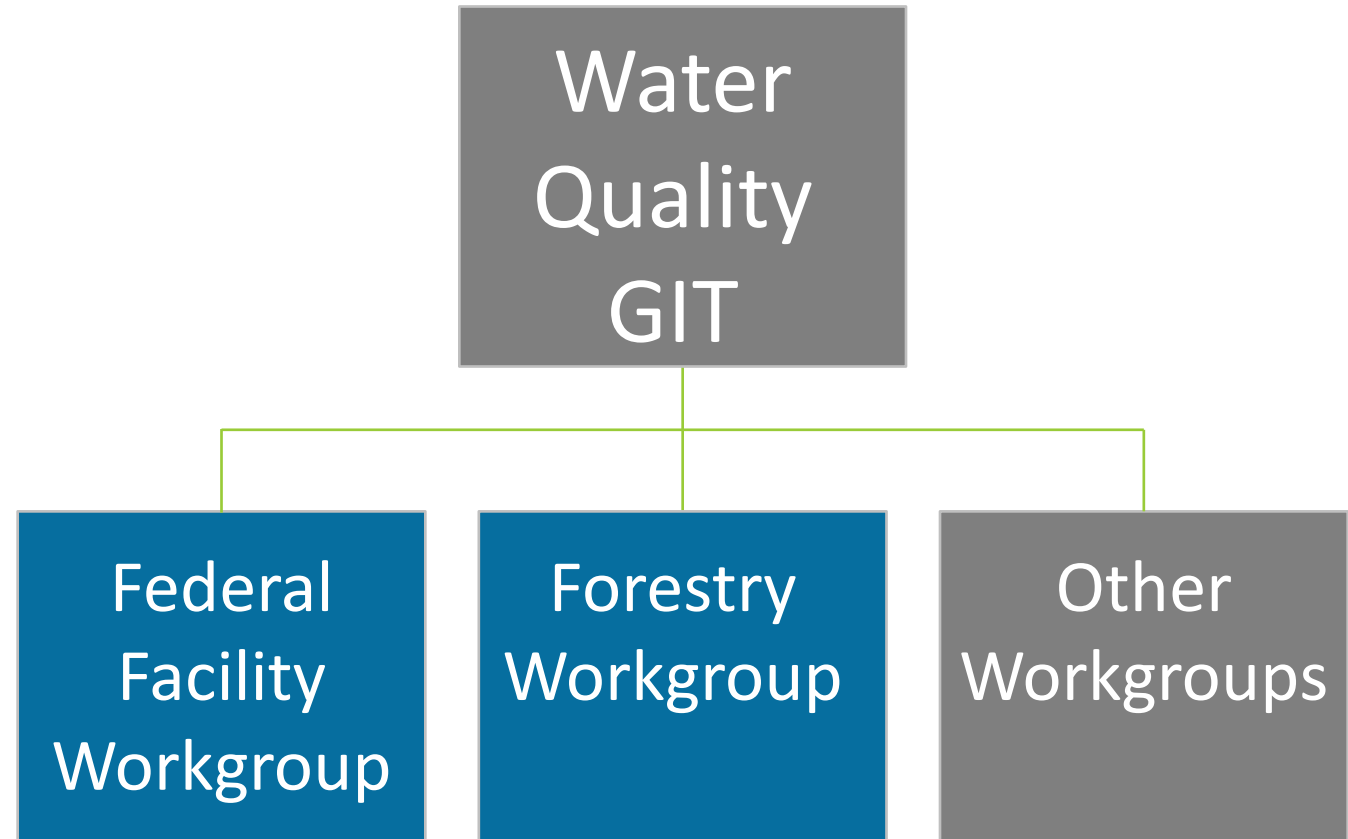
Work Experience

- Washington College GIS Lab
- Washington College Biogeochemistry Lab
- Wells National Estuarine Research Reserve
- Friends of Acadia National Park



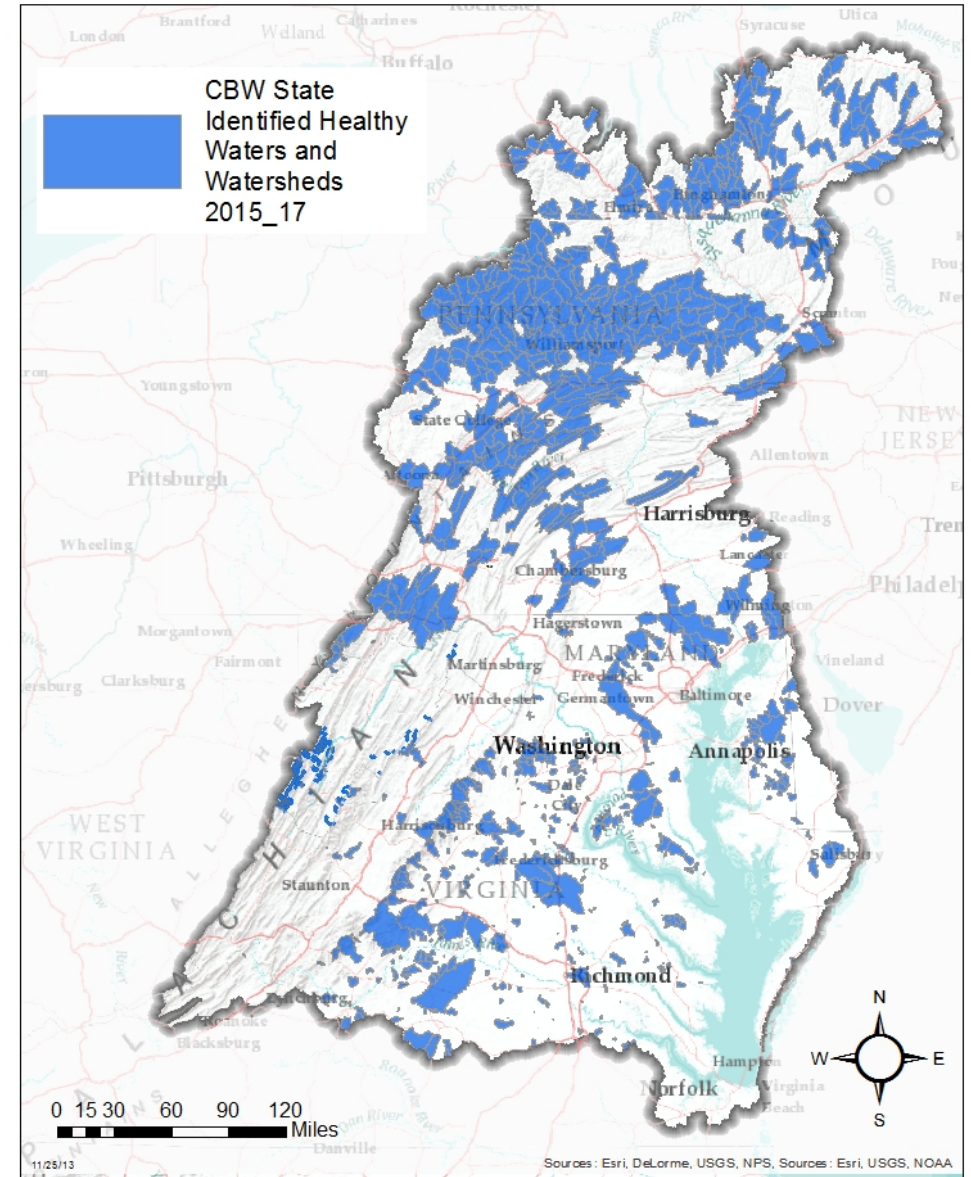
My Teams

Maintain
Healthy
Watersheds
GIT



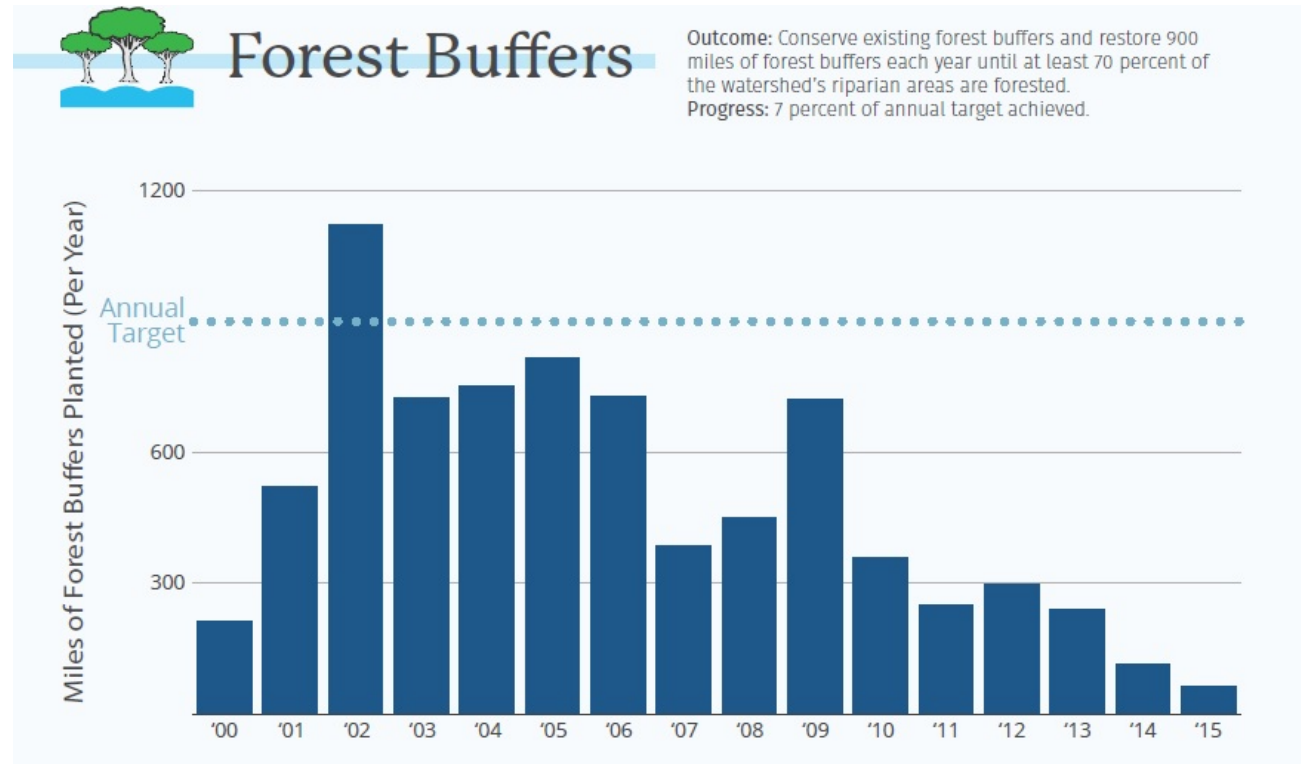
HWGIT Update

- Healthy Watersheds Assessment
- Forest Retention Study Phase III
- WIP Template



FWG Updates

- Land Image Analyst
- Buffer Indicator
- WIP Guide



FFWG Updates

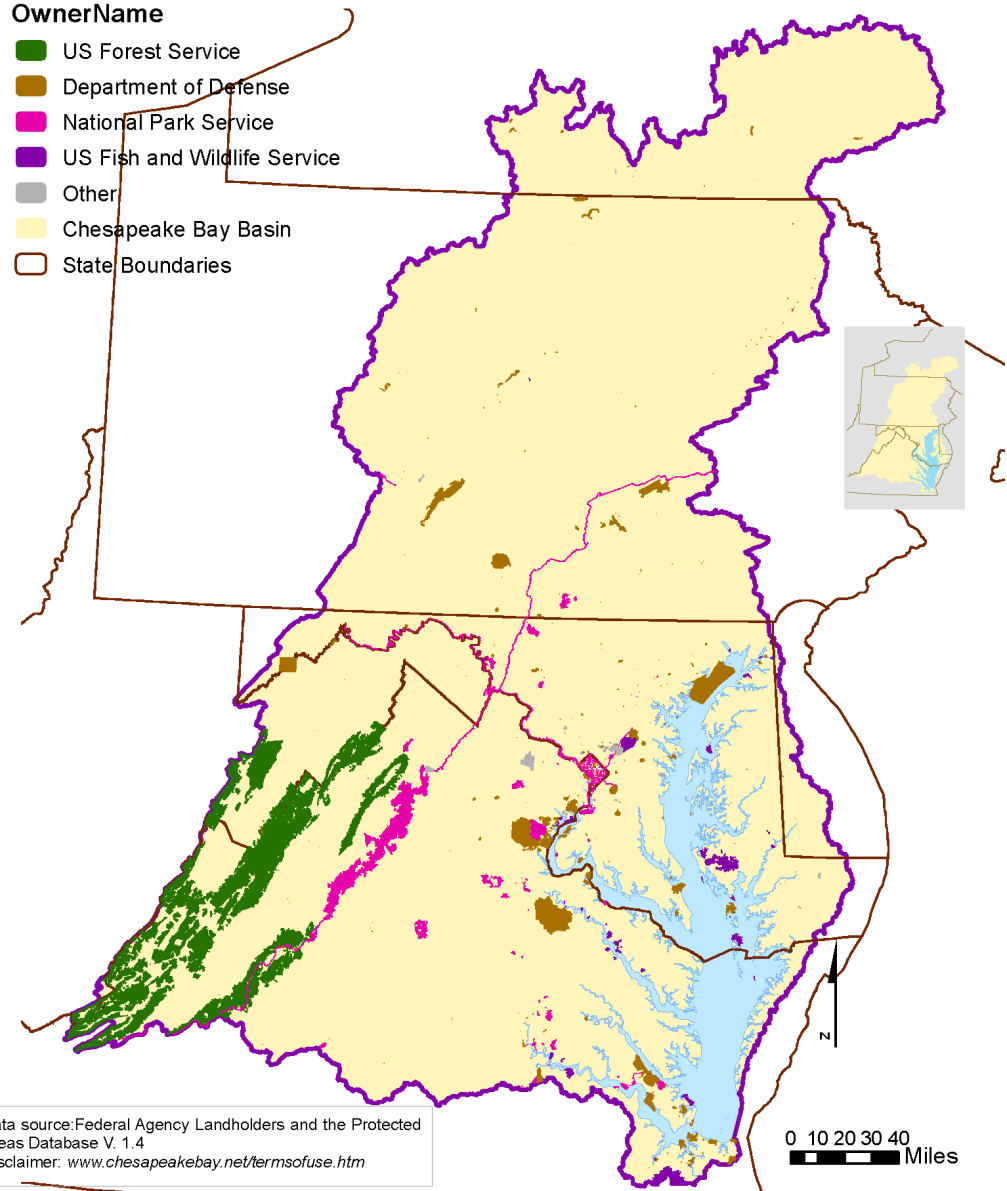
- Milestone and BMP Reporting
- WIP Guidance

Federal Lands and Facilities in the Chesapeake Bay Watershed



OwnerName

- US Forest Service
- Department of Defense
- National Park Service
- US Fish and Wildlife Service
- Other
- Chesapeake Bay Basin
- State Boundaries



Data source: Federal Agency Landholders and the Protected Areas Database V. 1.4
Disclaimer: www.chesapeakebay.net/termsfuse.htm

Professional Development

- Python and R courses
- Volunteering at SERC, NOAA, etc.
- Attending conferences



What's Next

- Career in Environmental Science
- PhD in Ecotoxicology or Biogeochemistry

THANK YOU!

Contact:

Katherine Wares

Chesapeake Research Consortium

Chesapeake Bay Program Office

410-267-5781

kwares@chesapeakebay.net