

Exploring the Need for a National Stormwater BMP Testing and Verification Program

Seth Brown, PE
sbrown@wef.org

Chesapeake Bay Program

Scientific and Technical Advisory Committee Workshop

March 24, 2015

Background

Seth Brown, P.E.

Water Environment Federation | Senior Stormwater
Advisor



George Mason University | PhD Candidate



Storm and Stream Solutions ,LLC | Principal &
Founder



Overview

- Motivation - Outline the Problem
- Background - Past/Existing Programs
- Investigation of the Issue
- STEPP Workgroup
- STEPP White Paper
- Next Steps

What's the Problem?

Eureka!

- Got a new product or practice

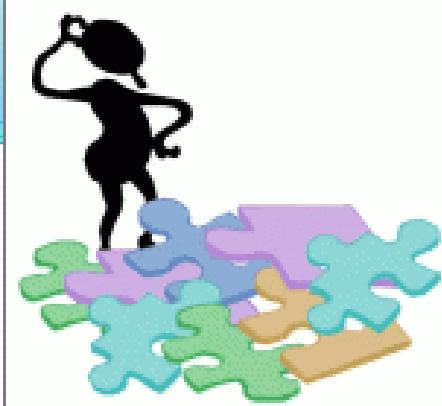
\$\$\$\$

- Got funding to scale up/refine

Doh!

- Can't get it to market!

Nature of the Problem



Depends upon point of view...

- **Manufacturer:** Product/practice approval process is a barrier
 - Can be challenging and a barrier to innovation and competition
- **Consumer:** Lack of independent testing
 - Reduces confidence in product/practice performance/efficacy
- **Regulator:** Uninformed product/practice consumers
 - May lead to under-performing stormwater programs

Ultimately impacts water quality.....



The Problem

Manufacturer's Perspective

Current approach to technology testing and verification is barrier to innovation and market entry

- Inconsistent programs
- Costly testing
- Patchwork of programs or lack of programs
- Time intensive

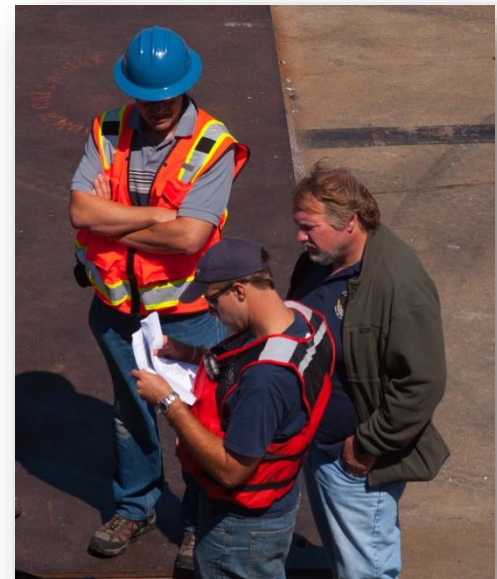


The Problem

Consumer/Engineer's Perspective

Lack of independent testing reduces my confidence in technology performance

- Lack of centralized knowledge base
- Regulatory (permit) drivers
- Fear of third party lawsuits
- Unverified technology



Past/Existing Programs



- Results of programs have been mixed
 - Costs still seen as high and time intensive (limited market entry)
 - Locals may not agree with state program
 - Geographic limitations still exist (local monopolies)
 - Programs use inconsistent testing requirements and processes



Who is Invested?

- Stakeholder groups:
 - Product manufacturers – **profits, success, innovation**
 - Regulators (EPA) – **reduced costs**
 - Public/municipal sector – **reliable performance**
 - Existing programs – **impacts, reciprocity**
 - Consultants – **client need**
 - Developers – **more options, better designs**



Investigation of the Issue

- Held a meeting at WEFTEC (New Orleans) in October, 2012
- Approximately 25 people at meeting representing EPA, manufacturers, and consultants
- Consensus was that this is a significant issue
- WEF committed to exploring the issue



STEPP Workgroup

- Formed **Stormwater Testing and Evaluation for Product and Practices (STEPP)** workgroup in spring, 2013
- Consists of approximately 50 members from stakeholder community
- Investigated a national program – white paper

STEPP Workgroup

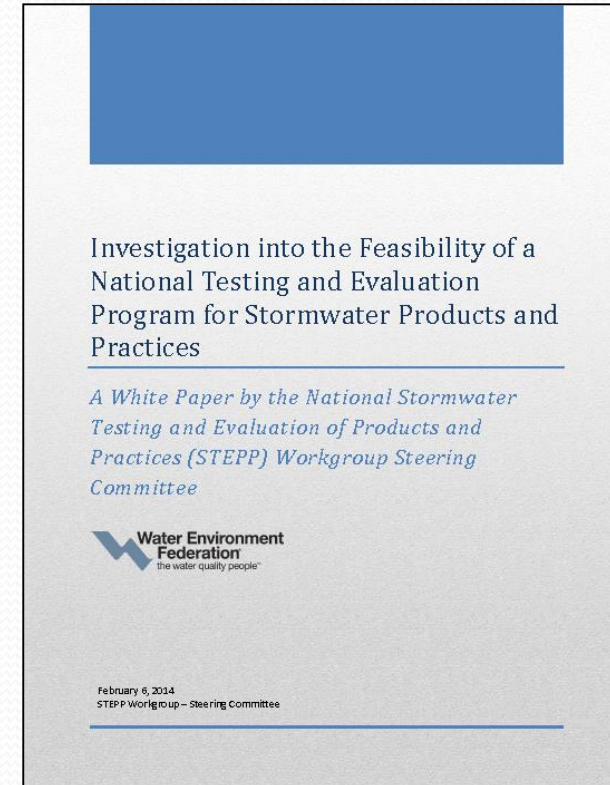


- A steering committee has worked to develop brief white paper expressing:
 - Scale/nature of problem
 - Data/info to back this up
 - Status and analysis of past/existing programs
 - Possible framework options for national program
 - Recommendations/next steps to move forward

STEPP White Paper

- Status

- Finalized document on February 6, 2014
- 24-page document, well-referenced
- Held webcast on STEPP on March 5, 2014
 - Over 750 registrants
- Paper and webcast are available for free at: www.wef.org/STEPP



White Paper Results



- National program is feasible and needed
- Engagement with EPA needed
- Engagement with states / groups needed
- Establish sustainable business plan
- Proprietary/public domain should be covered
- Distribute document widely

Response to White Paper



- Letters of support from NJ and WA
- Anecdotal support from other states and groups
- Increased support from EPA
- Interest from Department of Commerce
 - National Institute of Standards and Technology (NIST)
 - Group behind WaterSense program



Next Steps....



- EPA funding is driving the next phase
- Work done by Advisory Committee
 - Sectors include industry, regulatory, research, NGO, public (MS4 and state)
- Deliverable is a follow up report focusing on moving beyond investigatory phase

Next Phase Report

- Sustainable business plan
 - Near and far term
- Program architecture options
 - Administration, roles
- Protocol and evaluation options
- Recommended program framework and schedule
 - How and when does this roll out?

What Else?



- Investigate analogues (NTPEP, etc.)
- Stakeholder engagement and input
 - Survey of States and MS4s
- Follow up with Department of Commerce
- Periodically check in with workgroup
- Get involved?
 - Join STEPP workgroup

What Could It Look Like?

Programmatic Depth?

3rd Party Verification
Using Technology
Rep Protocols

Testing/Evaluation
Using Regional/National
Protocols

Certification Using
Regional/National
Protocols



Centralization of Architecture?

Locally
Administered

Regionally Affiliated
National Program

Single National
Program



Tie to Ches Bay
Program?

Exploring the Need for a National Stormwater BMP Testing and Verification Program

Seth Brown

sbrown@wef.org

Rebecca Arvin-Colon

rarvin-colon@wef.org