



FISHERIES GIT STAFFER UPDATE TO STAC

Emilie Franke

Chesapeake Research Consortium

Environmental Management Career Development Program

March 10th, 2015



DUKE UNIVERSITY CLASS OF 2013
ENVIRONMENTAL SCIENCE
MARINE SCIENCE AND CONSERVATION LEADERSHIP
SPANISH

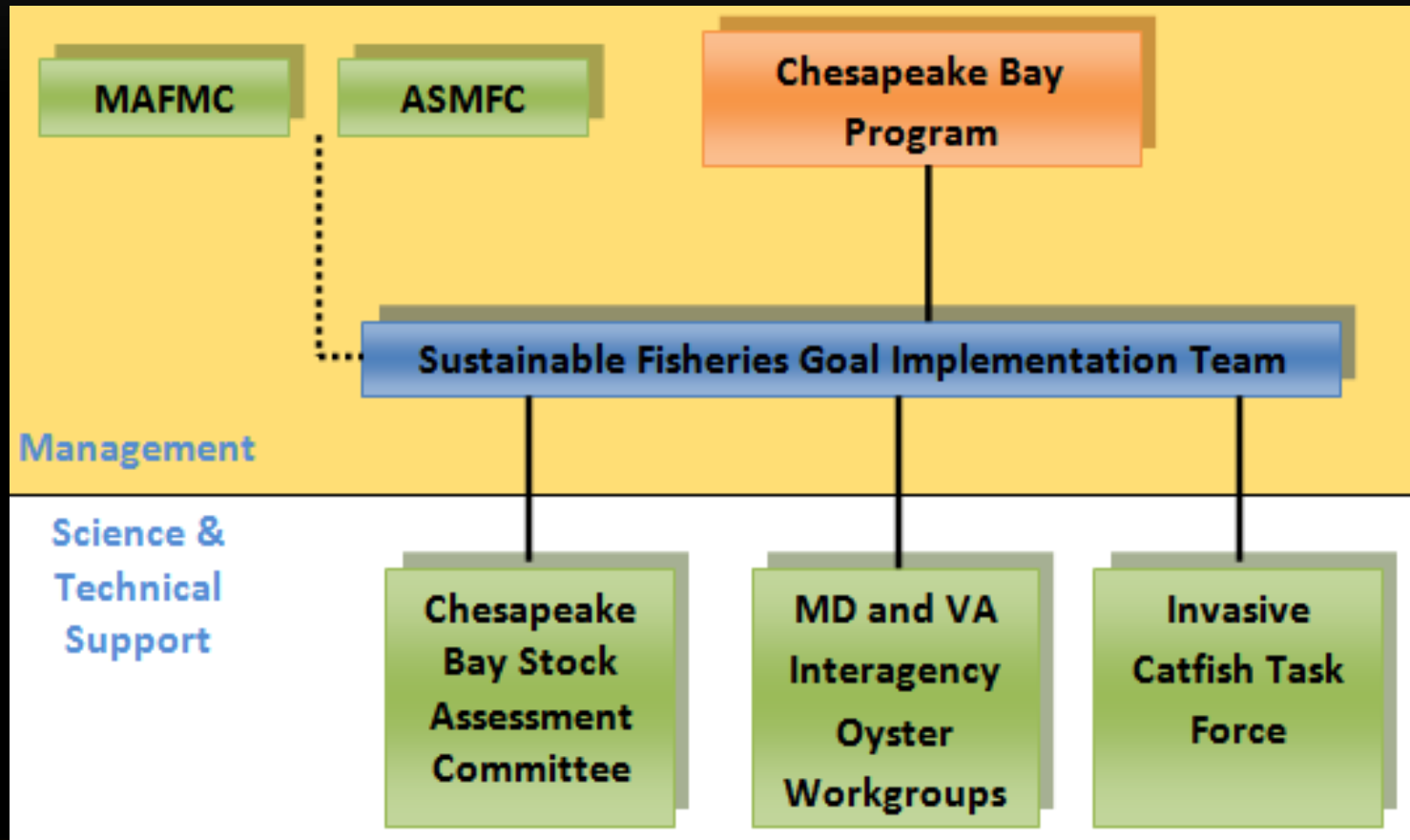
ESTUARINE EXPERIENCE



Duke 
NICHOLAS SCHOOL OF THE
ENVIRONMENT
DUKE UNIVERSITY MARINE LAB



SUSTAINABLE FISHERIES GIT



+ Management Strategy Drafting Teams

MANAGEMENT STRATEGIES



ADDITIONAL GOAL TEAM PRIORITIES

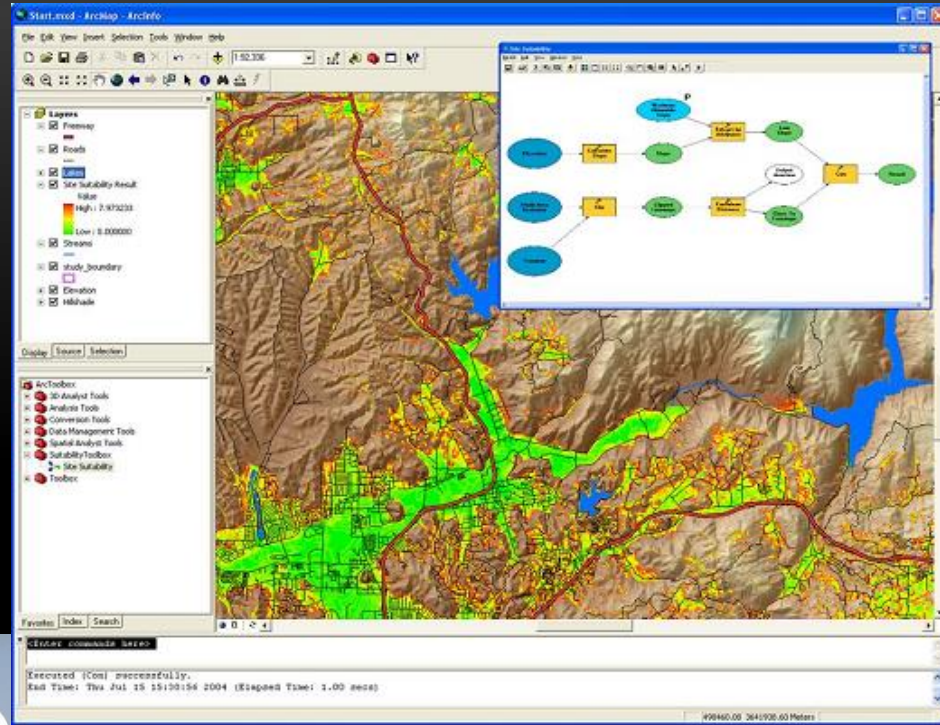


INDEPENDENT PROJECTS

- STAC Forage Workshop
- GIT Member Meet 'n' Greet



PROFESSIONAL DEVELOPMENT



FUTURE PLANS...



THANK YOU!!

Special thanks to:

- CRC
- Peyton Robertson and Bruce Vogt (NOAA)
- Fisheries GIT Members
- Field teams

Contact:

emilie.franke@noaa.gov

410-267-5643



PHOTO CREDITS

- Duke Cameron Indoor Stadium: Trevor Tinker (Flickr)
- Duke Marine Lab: <http://oceanography.ml.duke.edu/facilities/>
- Atlantic sturgeon: Robert Michelson
http://www.nmfs.noaa.gov/stories/2012/01/31_atlantic_sturgeon.html
- Blue crabs, blue crab in net, forest/wetland aerial: Chesapeake Bay Program
- Reef ball and black sea bass: Michael Eversmier
http://cbf.typepad.com/oyster_restoration/science/
- Atlantic menhaden: Brian Gratwicke (Flickr)
- Blue catfish: rbairdpccam (Flickr)
- Striped Bass: Blair M. Seltz/CBF staff <http://www.cbf.org/about-the-bay/more-than-just-the-bay/creatures-of-the-chesapeake/striped-bass-rockfish>
- Chesapeake watershed: Landsat/NASA - Landsat photo, from circa 2000. Generated via [1] from NASA data. Licensed under Public Domain via Wikimedia Commons - http://commons.wikimedia.org/wiki/File:Chesapeakelandsat.jpeg#mediaviewer/File:Chesapeake_landsat.jpeg
- ArcGIS map: <http://esrik-12gis.emich.edu/k12/learn/arcgisDesktop>
- All others are courtesy of Emilie Franke