


Overcoming Barriers to Change:  
Training & Technical Assistance  
David P. Orr, PE, PhD  
Director  
Cornell Local Roads Program  
(NY LTAP Center)



Who maintains  
ditches in your state?

Why do we need ditches.



Barriers both real and artificial



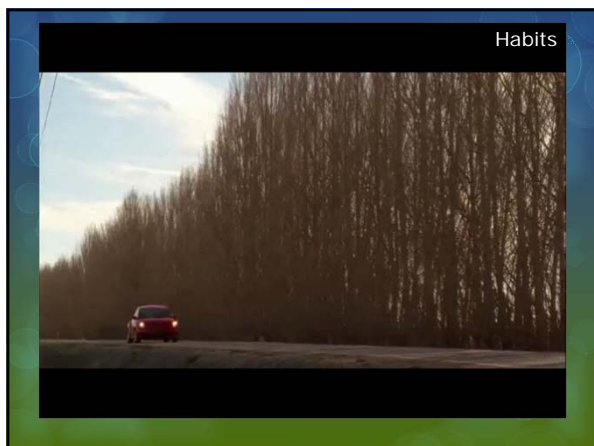
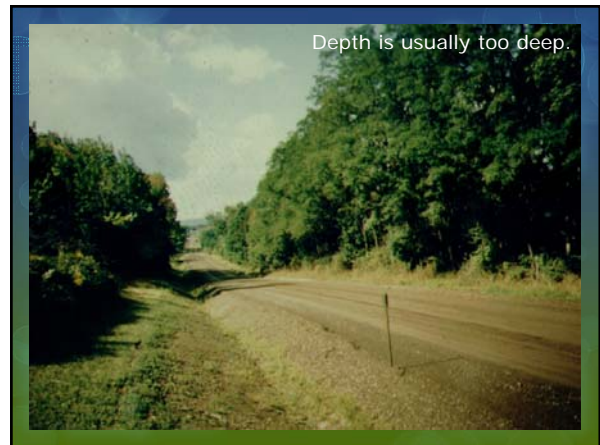
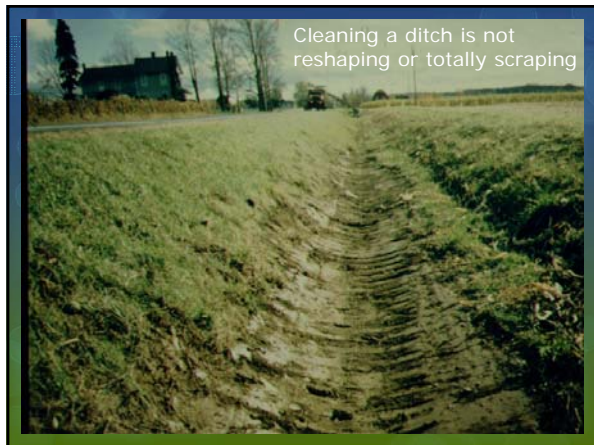
We need to speak the same language

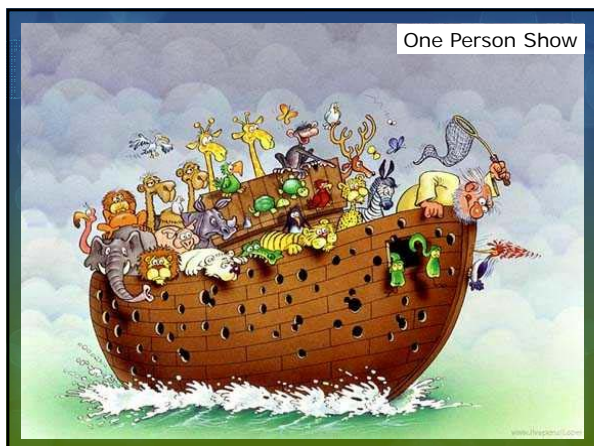


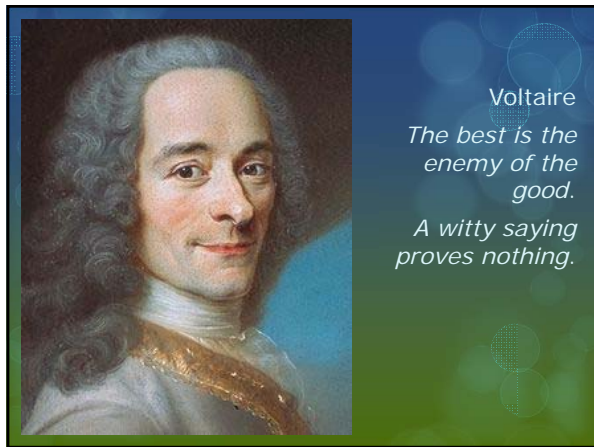
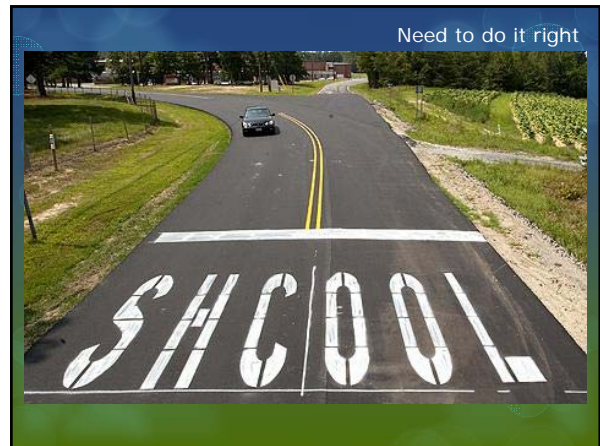
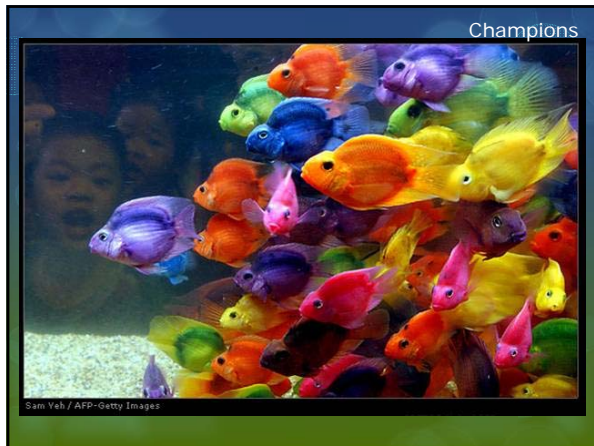
Joshua Katz, Dept of Statistics, NC State University

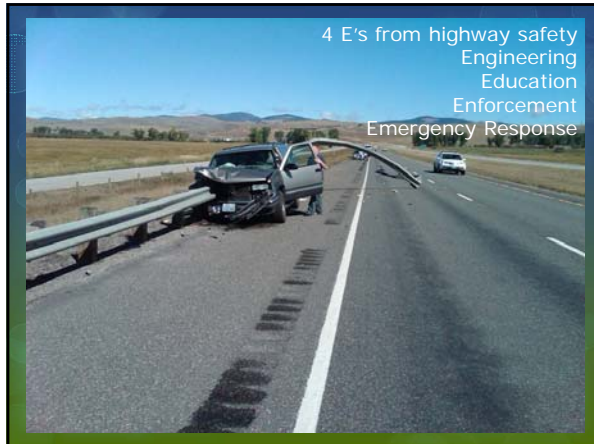
Seeing the whole picture












What LTAP Centers do




The collage includes three images: the top one shows three workers in safety vests on a road; the bottom left shows a group of people gathered around a yellow vehicle; the bottom right shows a sign for 'Village of Pittsford' with the text 'The Best Place to Live, Work & Play'.




In 1 mile, how many tons are eroded before you can detect the erosion?  
30 tons



And of course this erosion winds up in the bay



Who maintains ditches in your state? Crews and field personnel



Thank You  
david.orr@cornell.edu