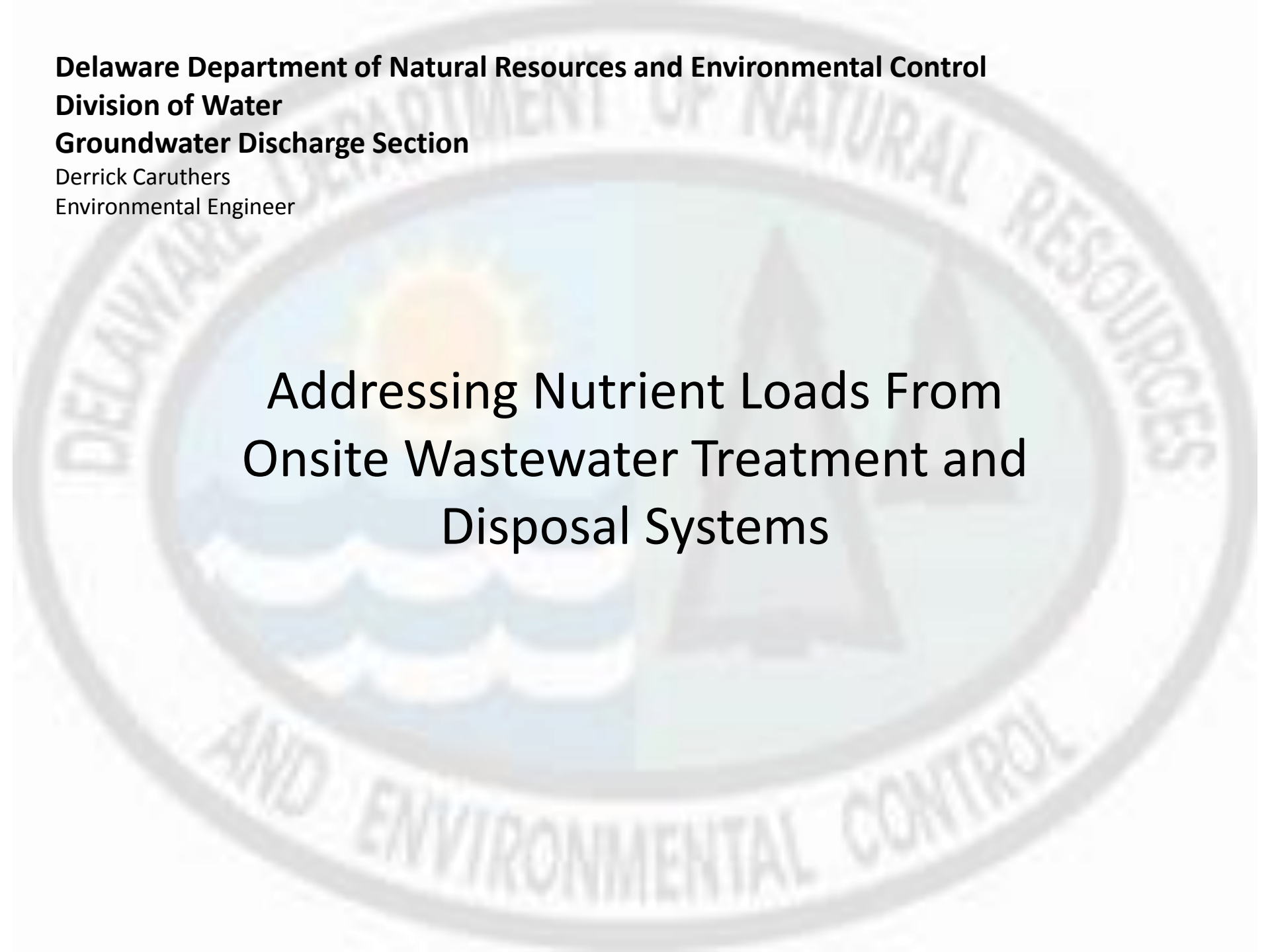


Delaware Department of Natural Resources and Environmental Control
Division of Water
Groundwater Discharge Section

Derrick Caruthers
Environmental Engineer

**Addressing Nutrient Loads From
Onsite Wastewater Treatment and
Disposal Systems**



Nutrient Loads Regulated By Watershed

Proposed Regulations Governing the Design, Installation, and Operation of On-site Wastewater Treatment and Disposal Systems

- All new and replacement systems within 1,000' of Chesapeake Bay tidal waters
 - TN 20 mg/l
 - 50% reduction in effluent TN
 - End of ATU pipe
 - Beneath disposal system (verified by 3rd party results)

Regulations Governing the Pollution Control Strategy for the Inland Bays Watershed

- All systems must achieve:
 - TN 20 mg/l
 - 50% reduction in effluent TN

Additional On-site Wastewater Treatment and Disposal System Requirements

The Department continues to encourage development of new systems, processes, and techniques for eliminating, reusing, or recovering resources from wastewater. These techniques include, but are not limited to greywater collection and use, nutrient recovery, and source reduction of wastewater. These innovative technologies are subject to review and approval by the Department.

For information on the Proposed Regulations:

www.dnrec.delaware.gov

Contact: Jack Hayes

(302) 739-9327

John.Hayes@state.de.us