

Multiple Model Comparisons in the Chesapeake Bay: Hydrodynamics and Dissolved Oxygen

Marjy Friedrichs

Virginia Institute of Marine Science



With special thanks for contributions from:

Aaron Bever

Ike Irby

Estuarine Hypoxia Testbed Team PIs

Funding from NOAA

- **Lessons learned from the U.S. IOOS Estuarine Hypoxia Testbed model comparison project in the Chesapeake Bay**
- **Recommendations from the STAC sponsored M3.1 workshop, concerning the multiple shallow water model pilot project**



- **Lessons learned from the U.S. IOOS Estuarine Hypoxia Testbed model comparison project in the Chesapeake Bay**
- Recommendations from the STAC sponsored M3.1 workshop, concerning the multiple shallow water model pilot project

The U.S. IOOS Testbed Project

PIs:

Rick Luettich (UNC)

Don Wright (SURA)

Four Teams:

Cyberinfrastructure Team

Coastal Inundation Team

Shelf Hypoxia Team (Gulf of Mexico)

Estuarine Hypoxia Team (Chesapeake Bay)



The U.S. IOOS Testbed Project

Estuarine Hypoxia Team:

Marjorie Friedrichs (VIMS)

Carl Friedrichs (VIMS)

Aaron Bever (VIMS)

Jian Shen (VIMS)

Malcolm Scully (ODU)

Raleigh Hood/Wen Long (UMCES)

Ming Li (UMCES)

Kevin Sellner (CRC)

Federal partners

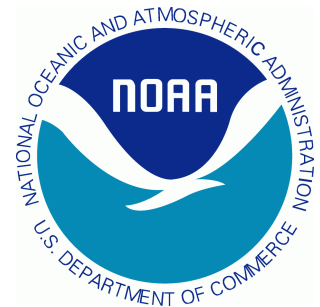
Carl Cerco (USACE)

David Green (NOAA-NWS)

Lyon Lanerolle (NOAA-CSDL)

Lewis Linker (EPA)

Doug Wilson (NOAA-NCBO)



The U.S. IOOS Testbed Project

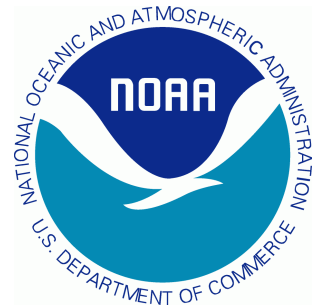
Overarching Goal of EH Component:

To help improve **operational modeling** of hypoxia in Chesapeake Bay

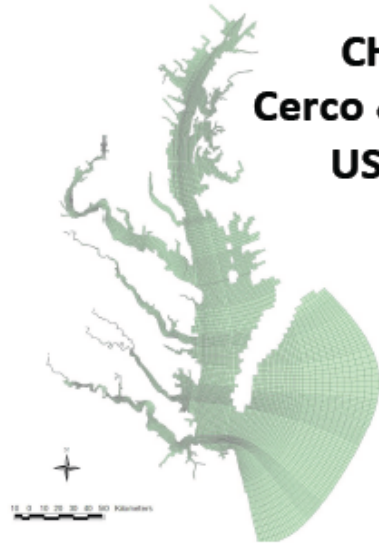
Methods:

- Compare relative skill of various Bay models
- Compare strengths/weaknesses of various models
- Assess how model differences affect water quality simulations

What should a
“Next Generation Bay Model” entail?

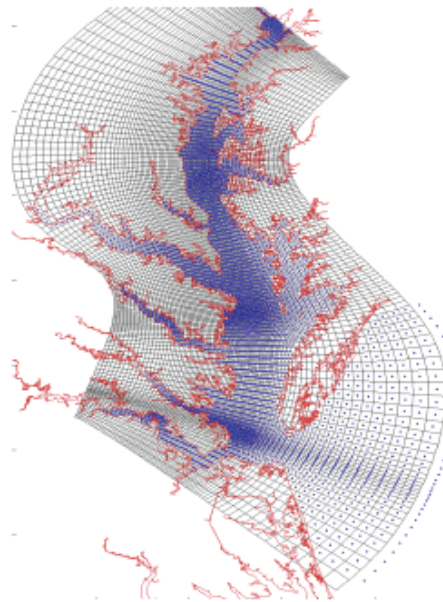


Five Hydrodynamic Models Configured for the Bay

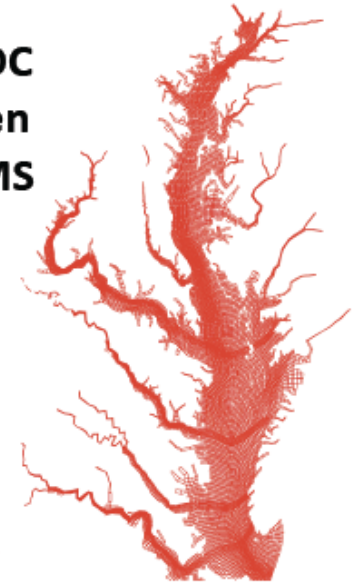


CH3D
Cercio & Wang
USACE

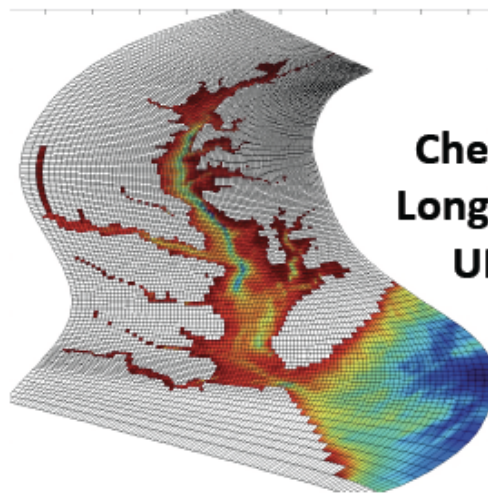
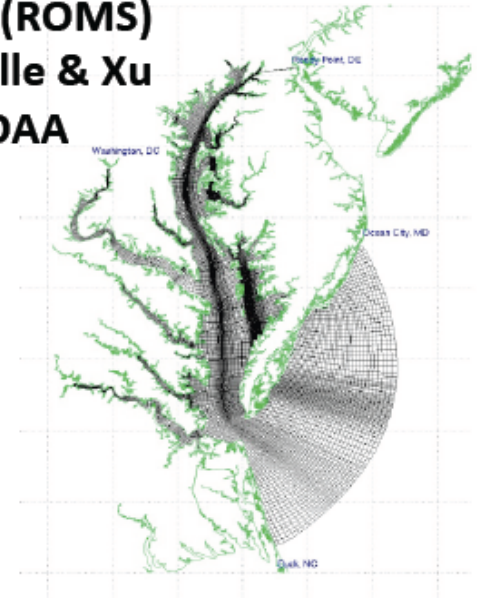
UMCES-ROMS
Li & Li
UMCES



EFDC
Shen
VIMS



CBOFS (ROMS)
Lanerolle & Xu
NOAA



ChesROMS
Long & Hood
UMCES

Five Biological (DO) Models Configured for the Bay

- **ICM**: CBP model; complex biology
- **BGC**: NPZD-type biogeochemical model
- **1eqn**: Simple one equation respiration
(includes SOD)
- **1term-DD**: depth-dependent respiration
(not a function of x, y, temperature,
nutrients...)
- **1term**: Constant net respiration

Coupled hydrodynamic-DO models

Six combinations:

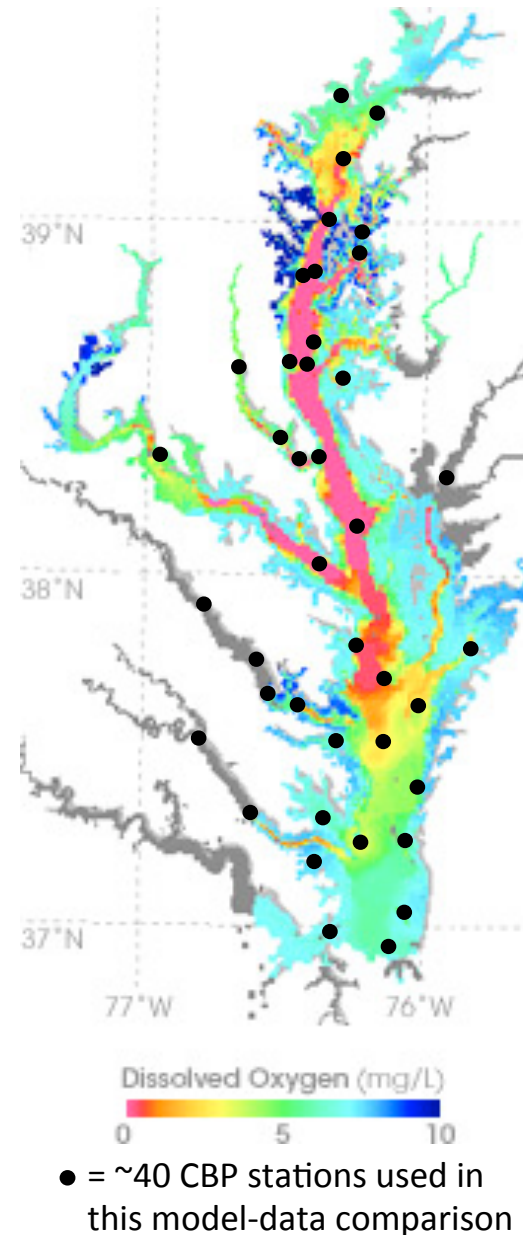
- CH3D + ICM ← **CBP model**
- EFDC + 1eqn
- CBOFS2 + 1term
- ChesROMS + 1term
- ChesROMS + 1term+DD
- ChesROMS + BGC

Physical models are similar; biological/DO models differ dramatically

All models (except CH3D) run using same forcing/boundary conditions, etc...

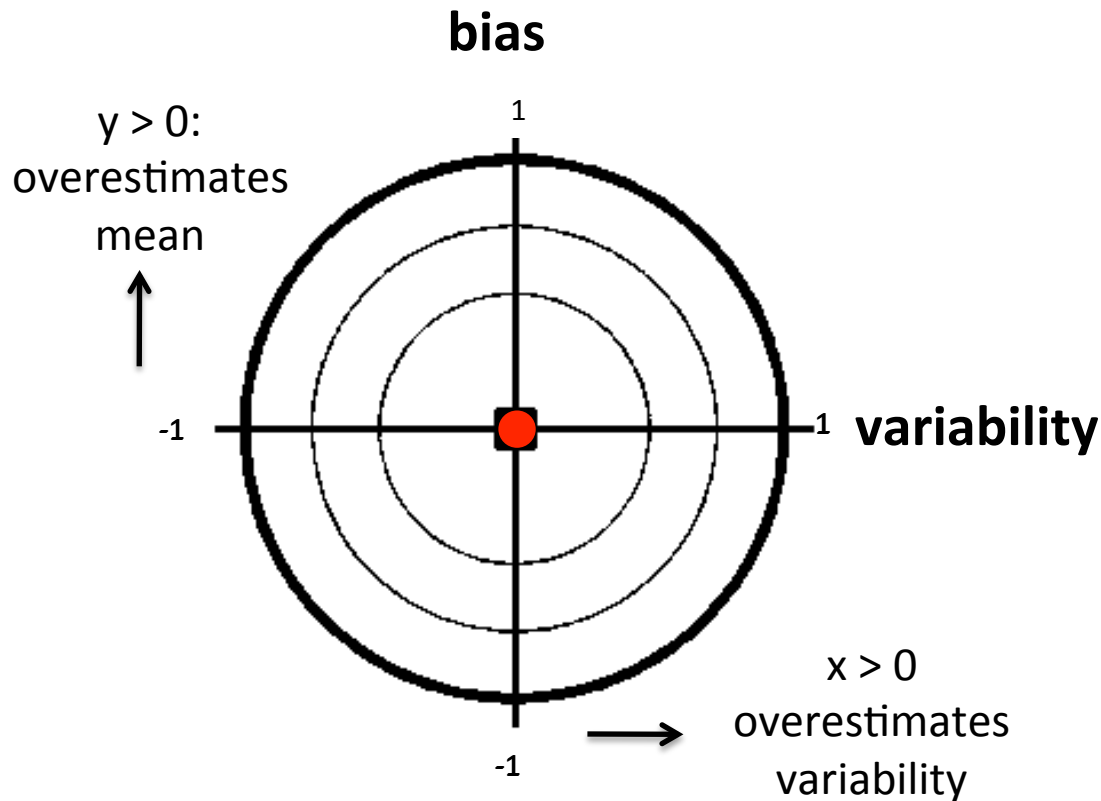
Model Skill

How well do the models represent the mean and variability of **stratification** and **dissolved oxygen** at ~40 CBP stations in 2004 and 2005?



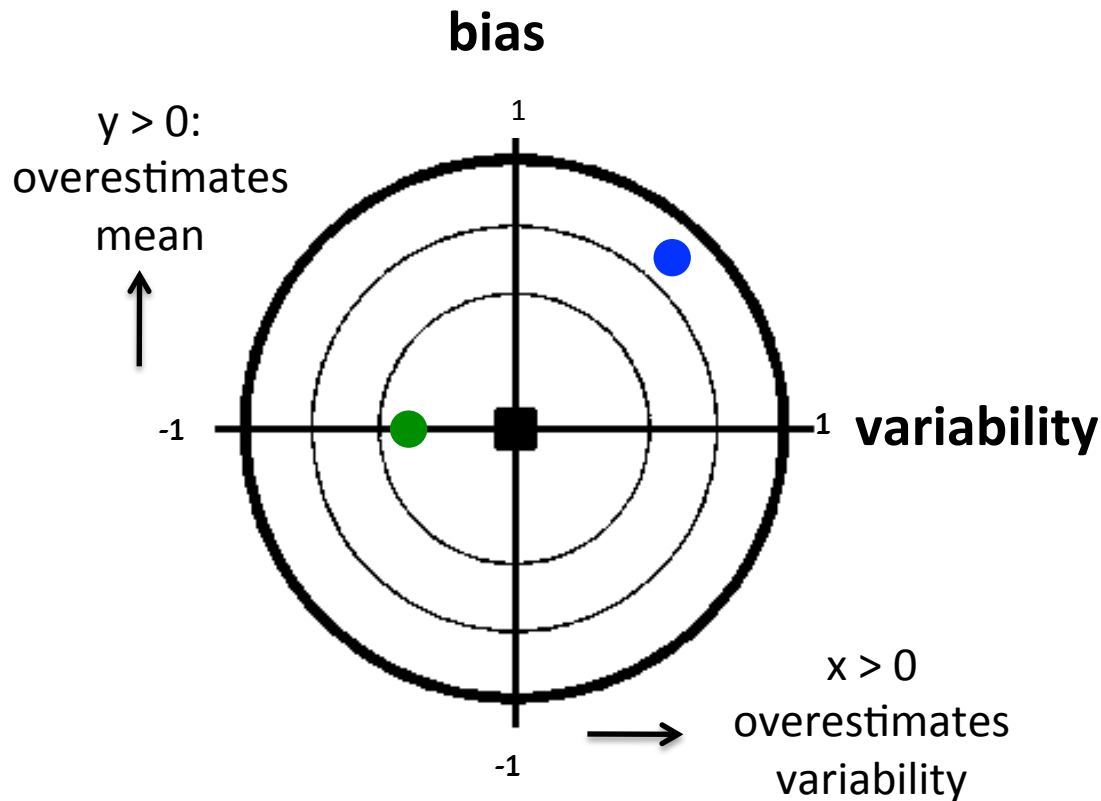
Relative model skill: Target diagrams

Model skill (RMSE) = Distance from Origin
symbol at origin \rightarrow model fits observations perfectly

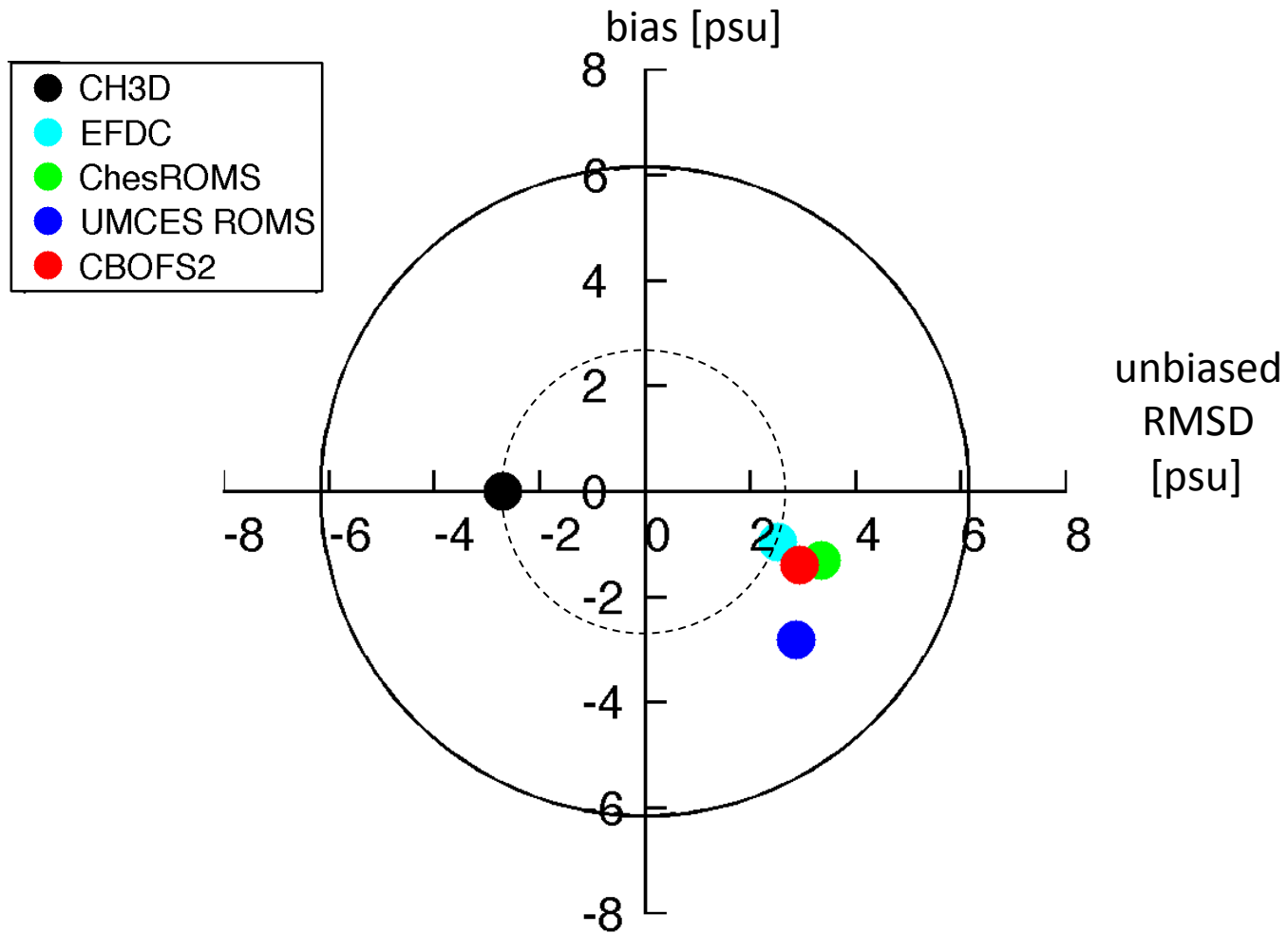


Relative model skill: Target diagrams

Model skill (RMSD) = Distance from Origin
symbol at origin \rightarrow model fits observations perfectly

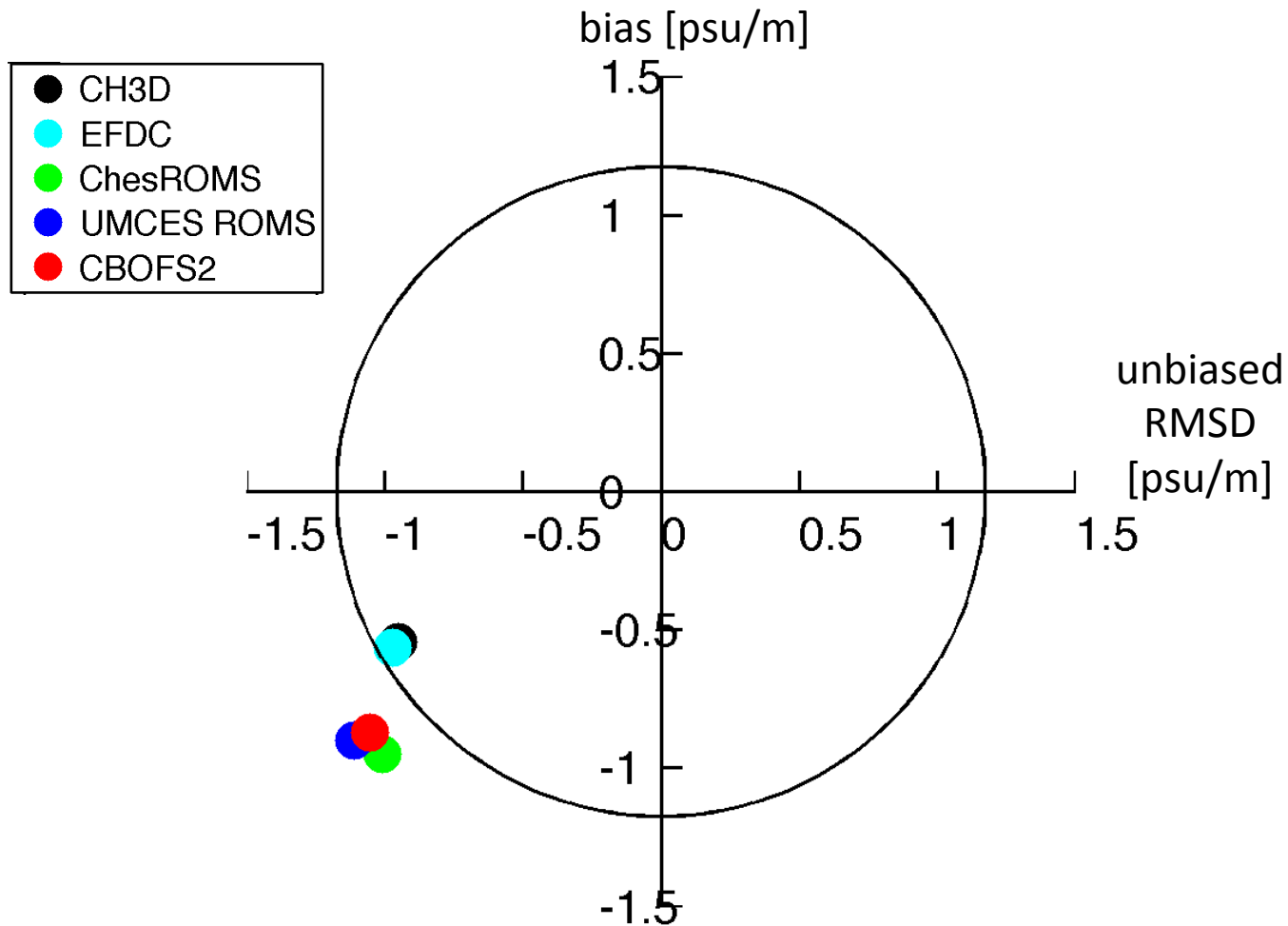


2004 Bottom Salinity



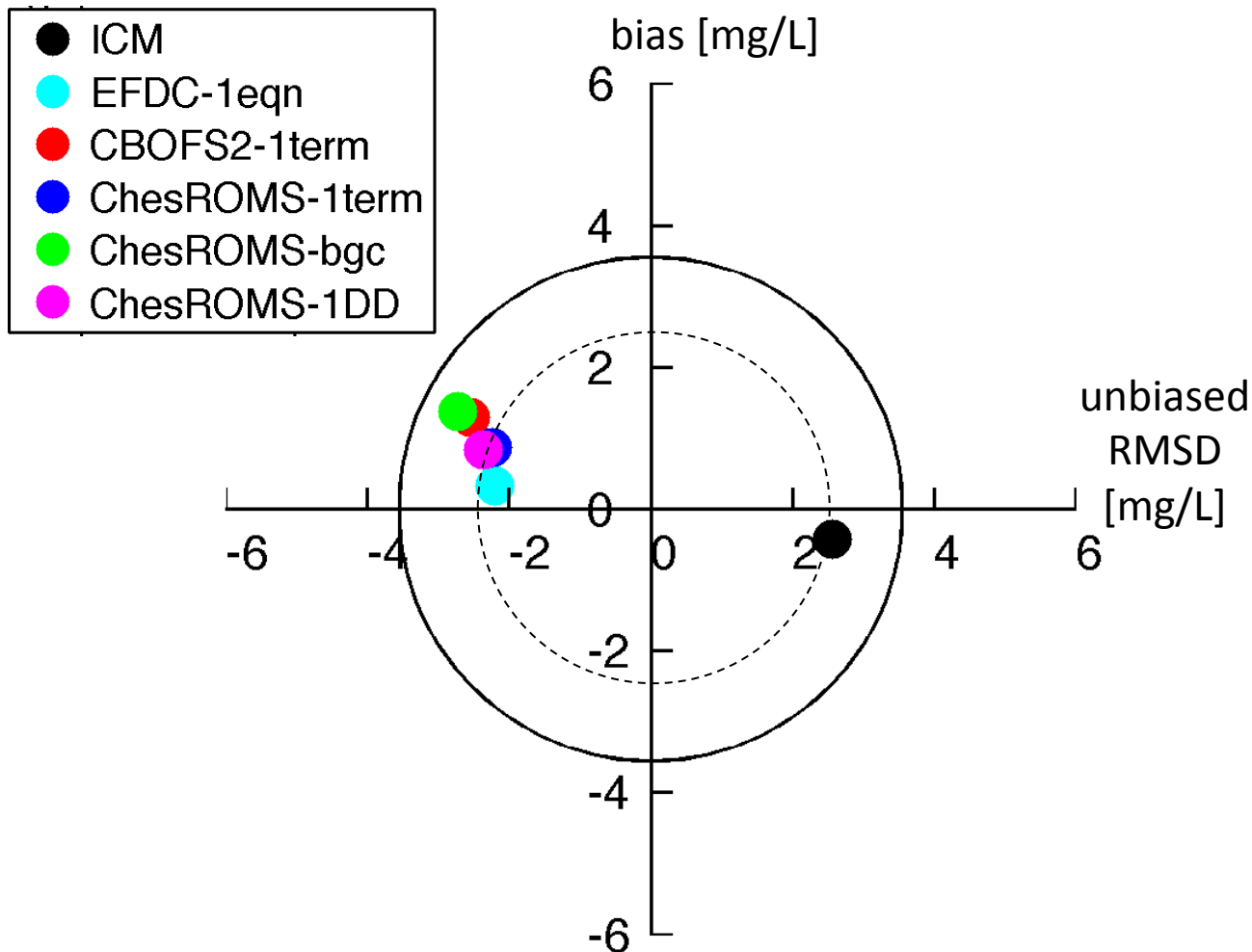
CH3D, EFDC reproduce bottom salinity best

2004 Stratification



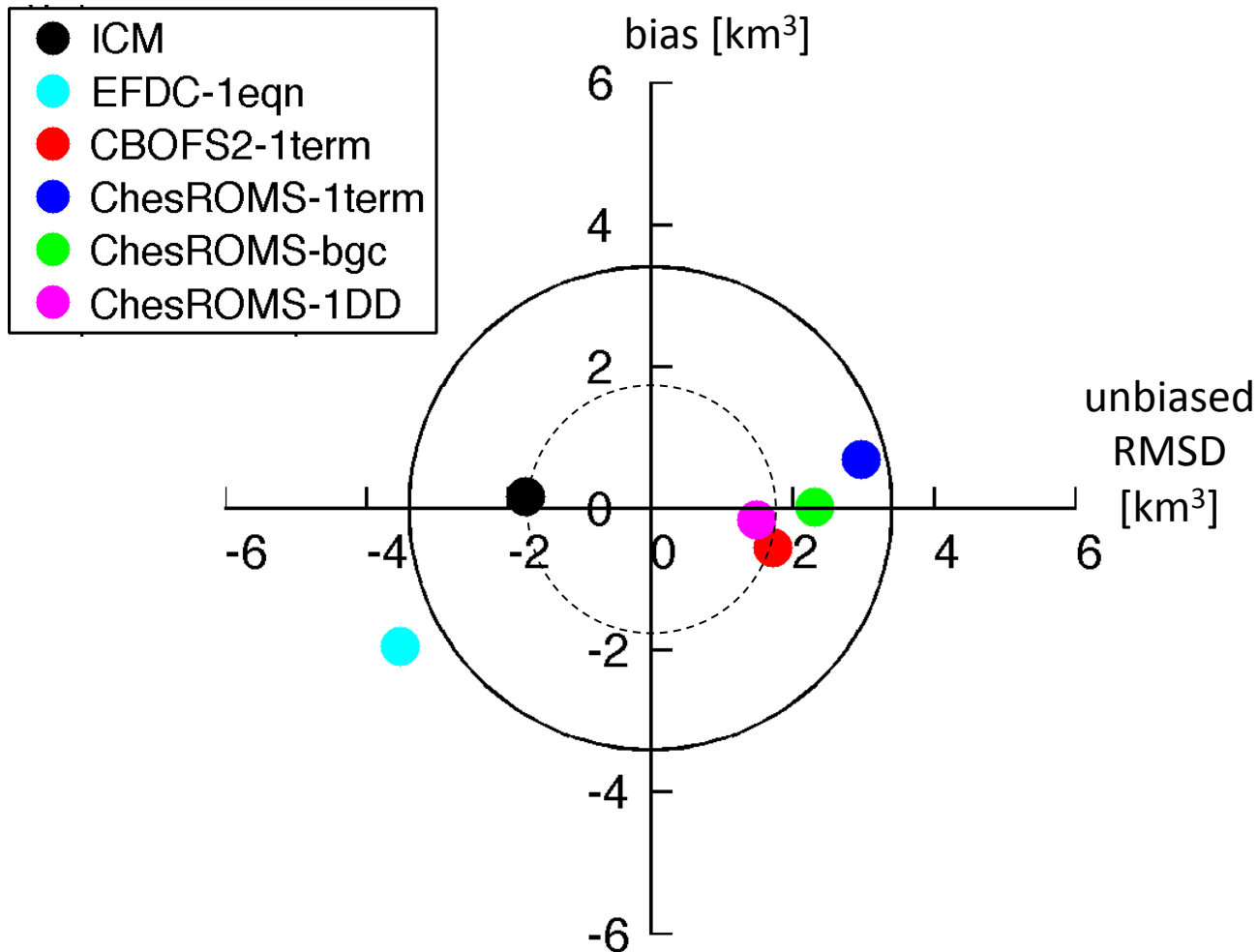
CH3D reproduces hydrodynamics better than the ROMS models: the multiple model comparison has increased our confidence in the CBP model

2004 Bottom DO



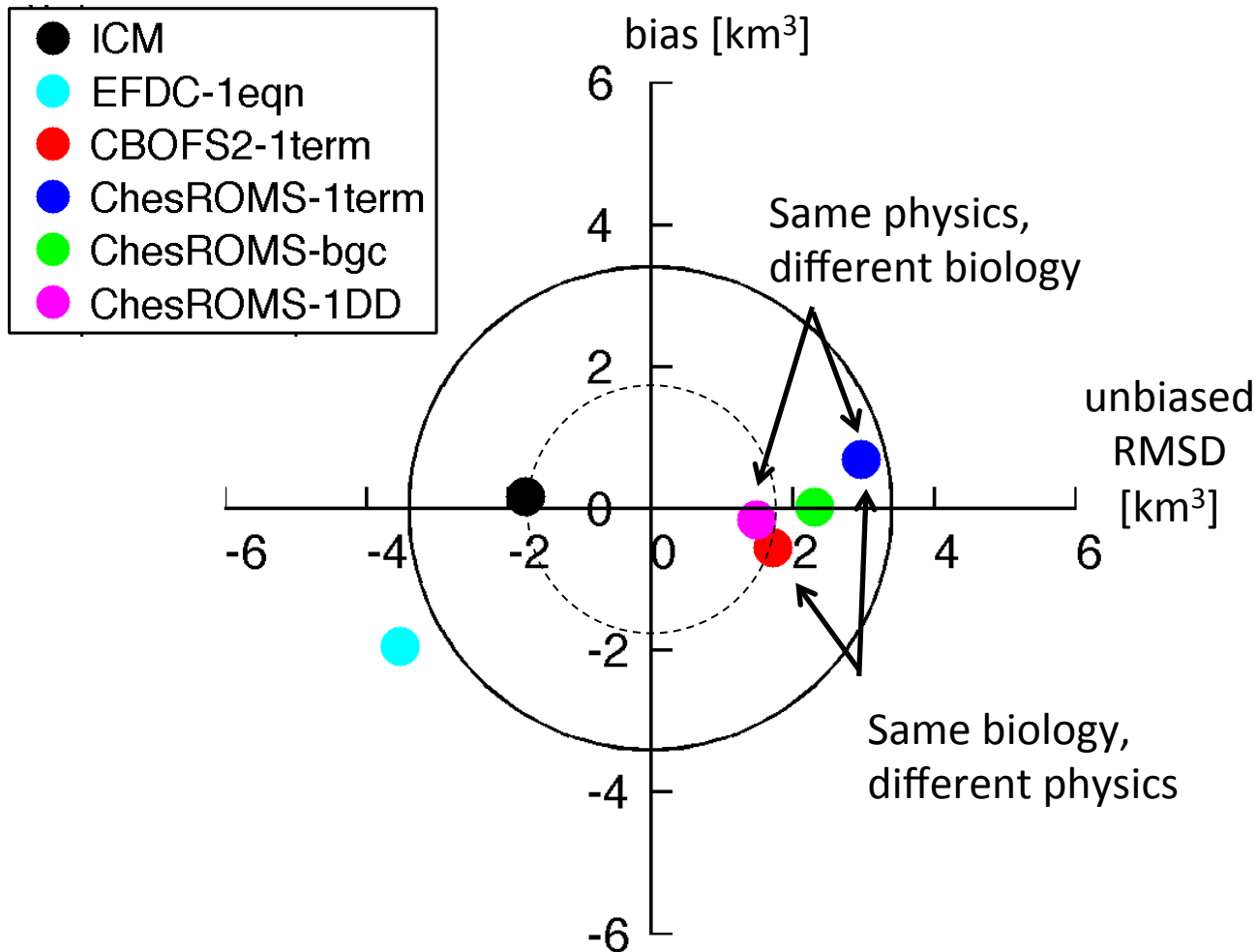
CBP model does well, but other models do equally well, even though they were not as skillful in terms of stratification

2004 Hypoxic Volume



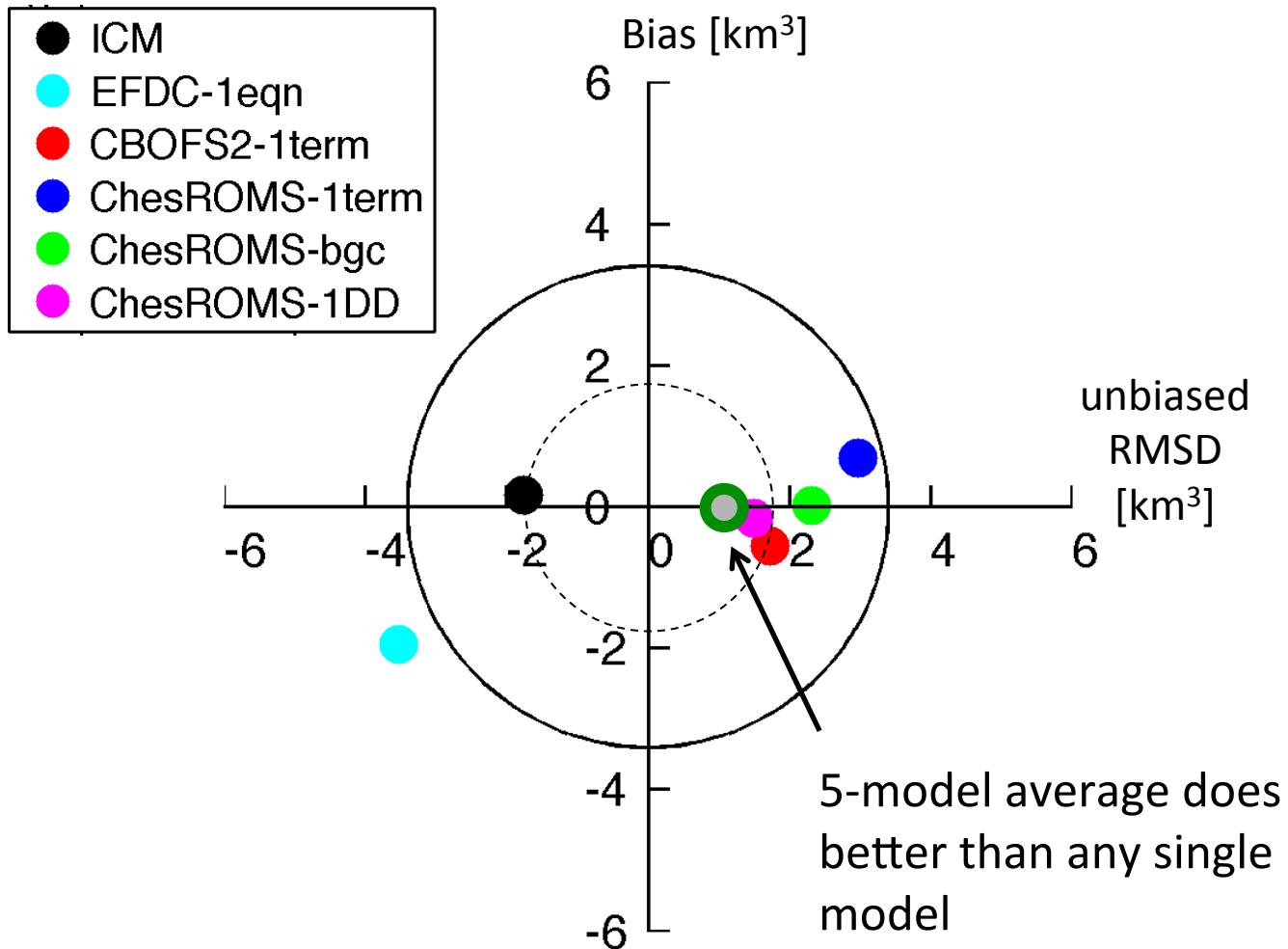
Again, CBP model does well, but other community models are rapidly improving; some now do equally well

2004 Hypoxic Volume



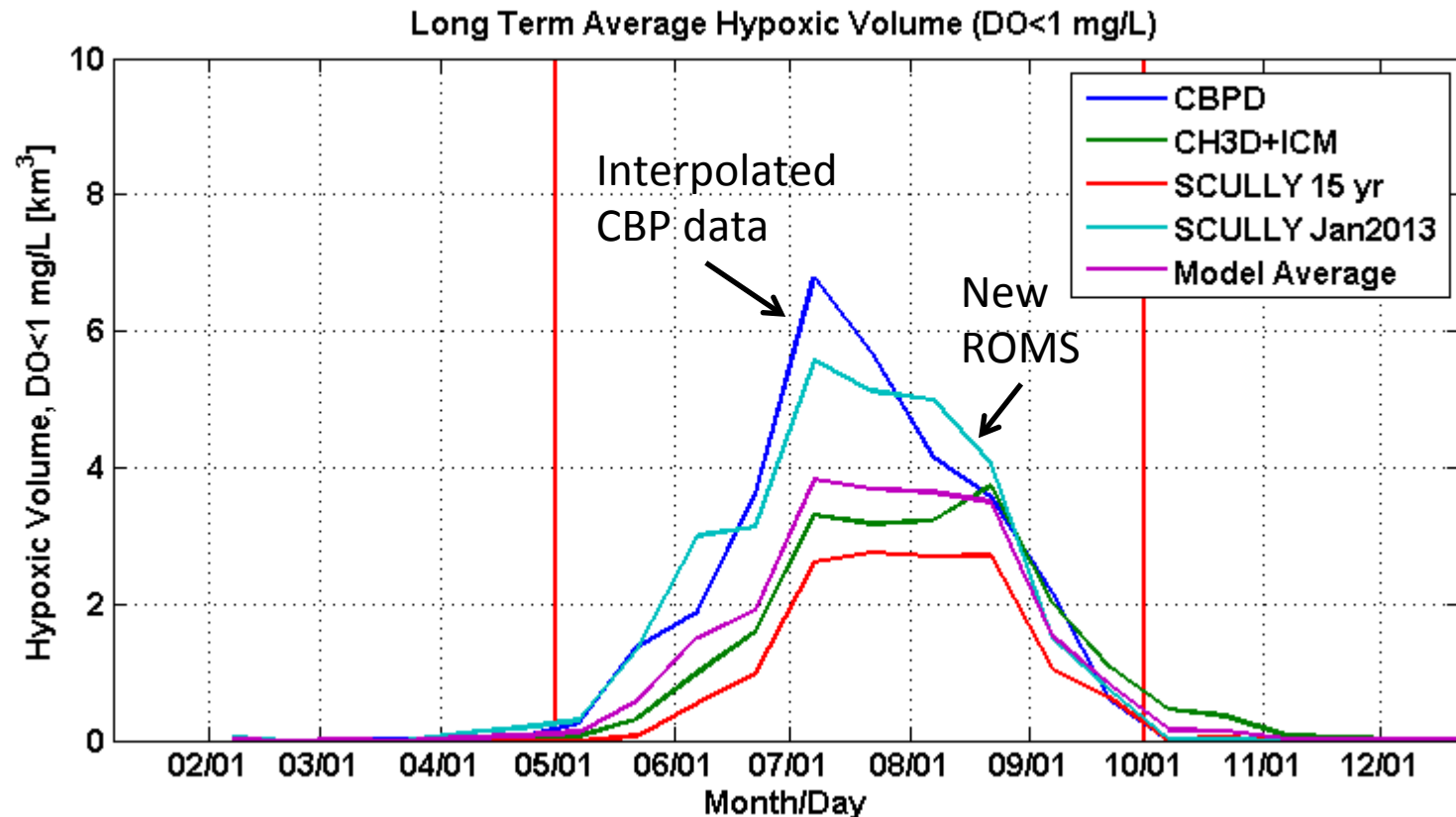
Multiple model comparison demonstrates that improving the physical model can be just as important as improving the biological model

2004 Hypoxic Volume



What about other years, besides 2004?

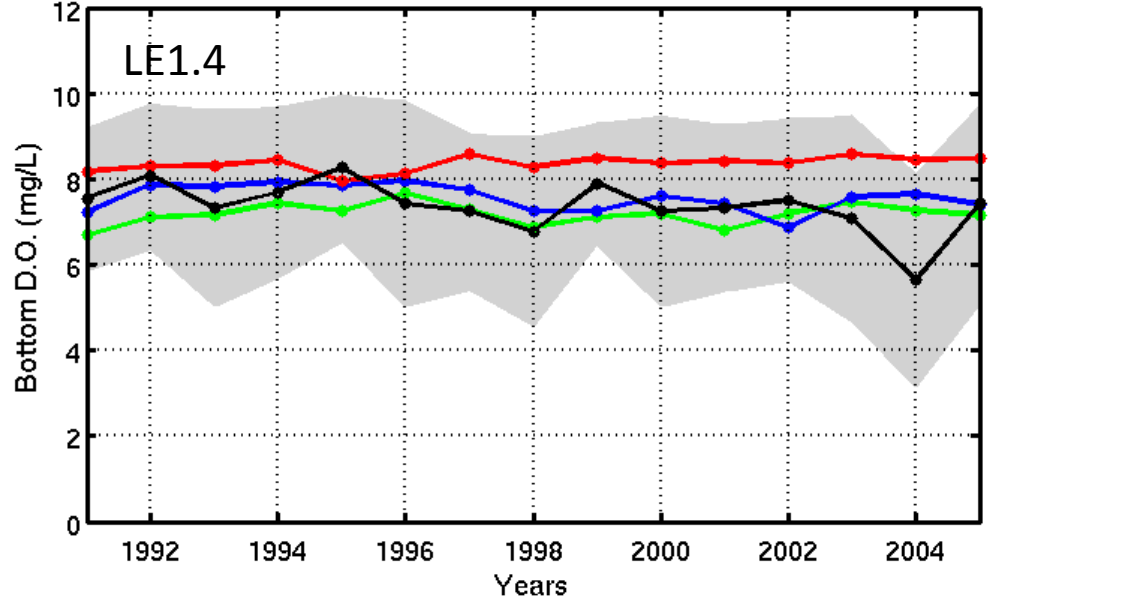
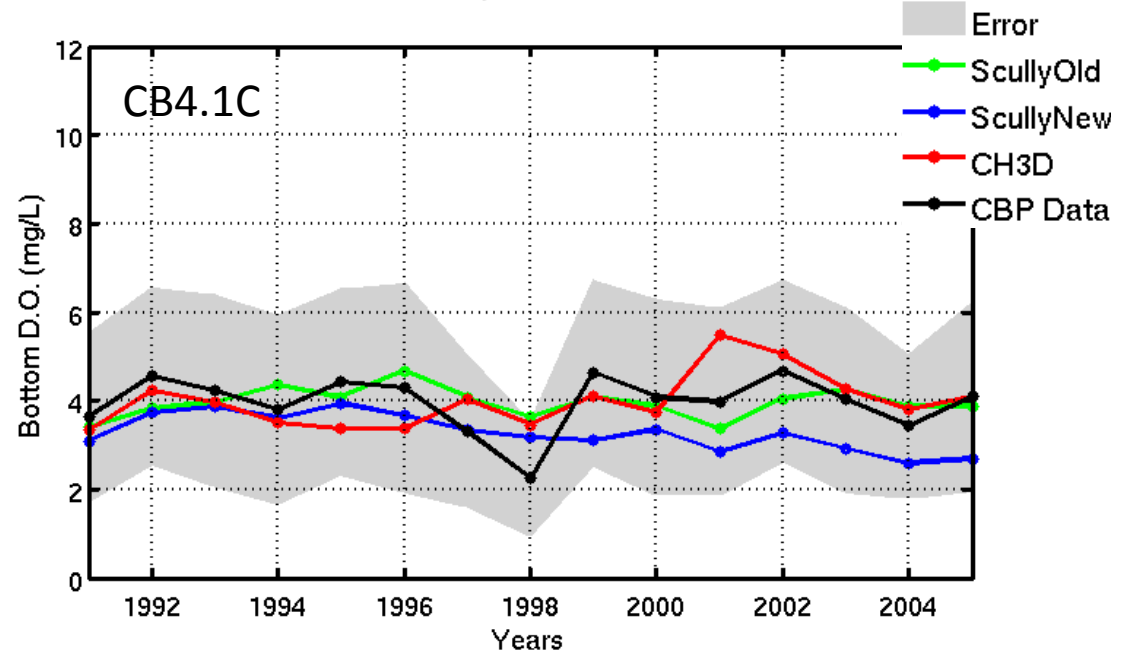
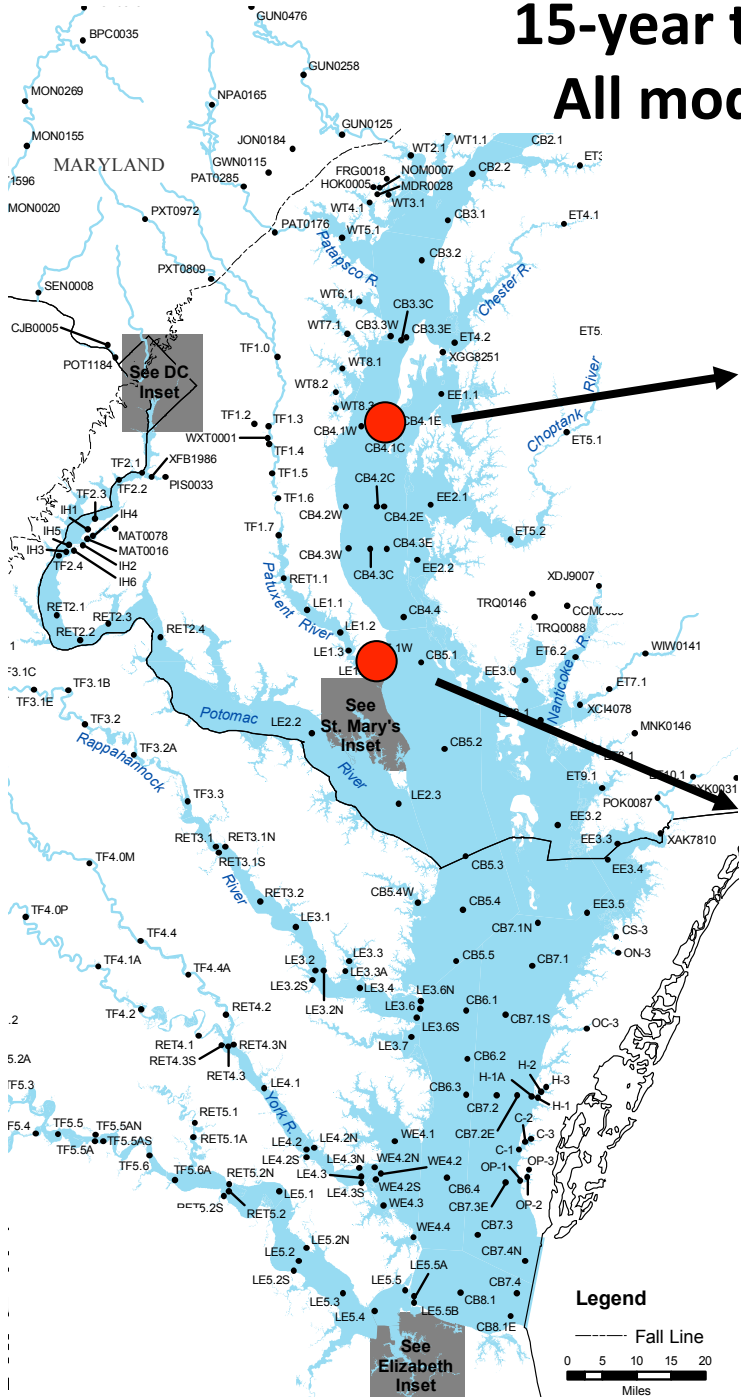
15-year Climatological Hypoxic Volume



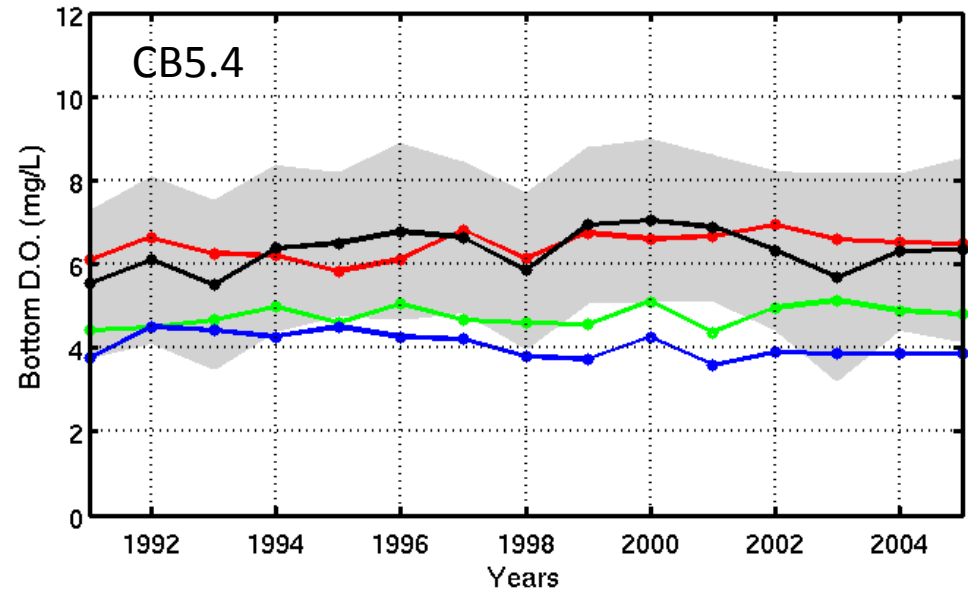
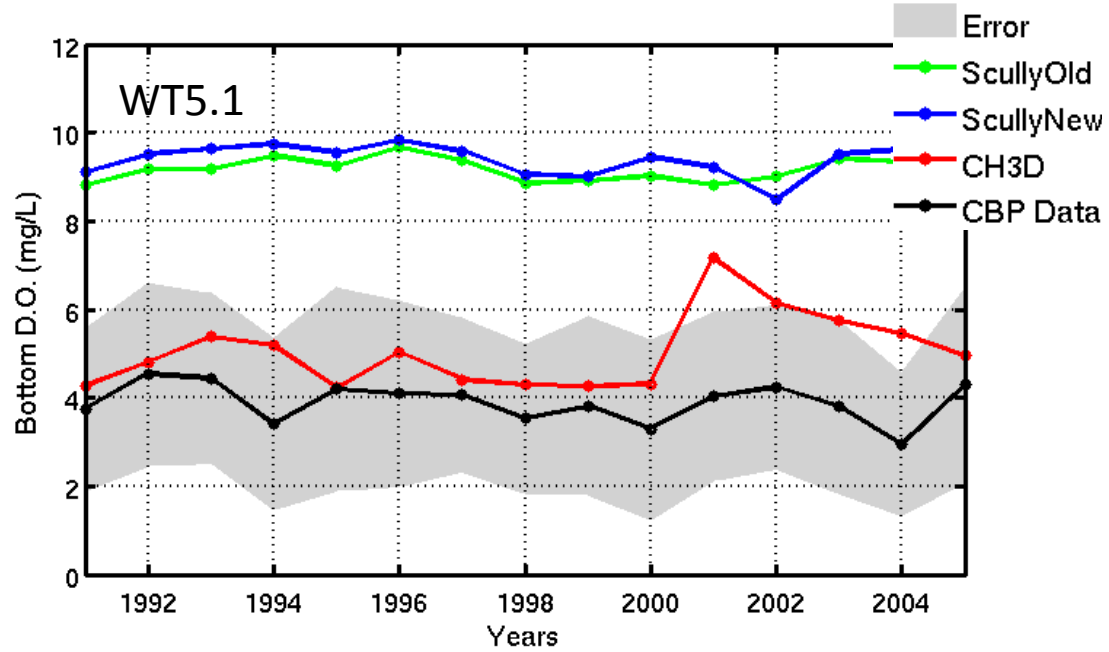
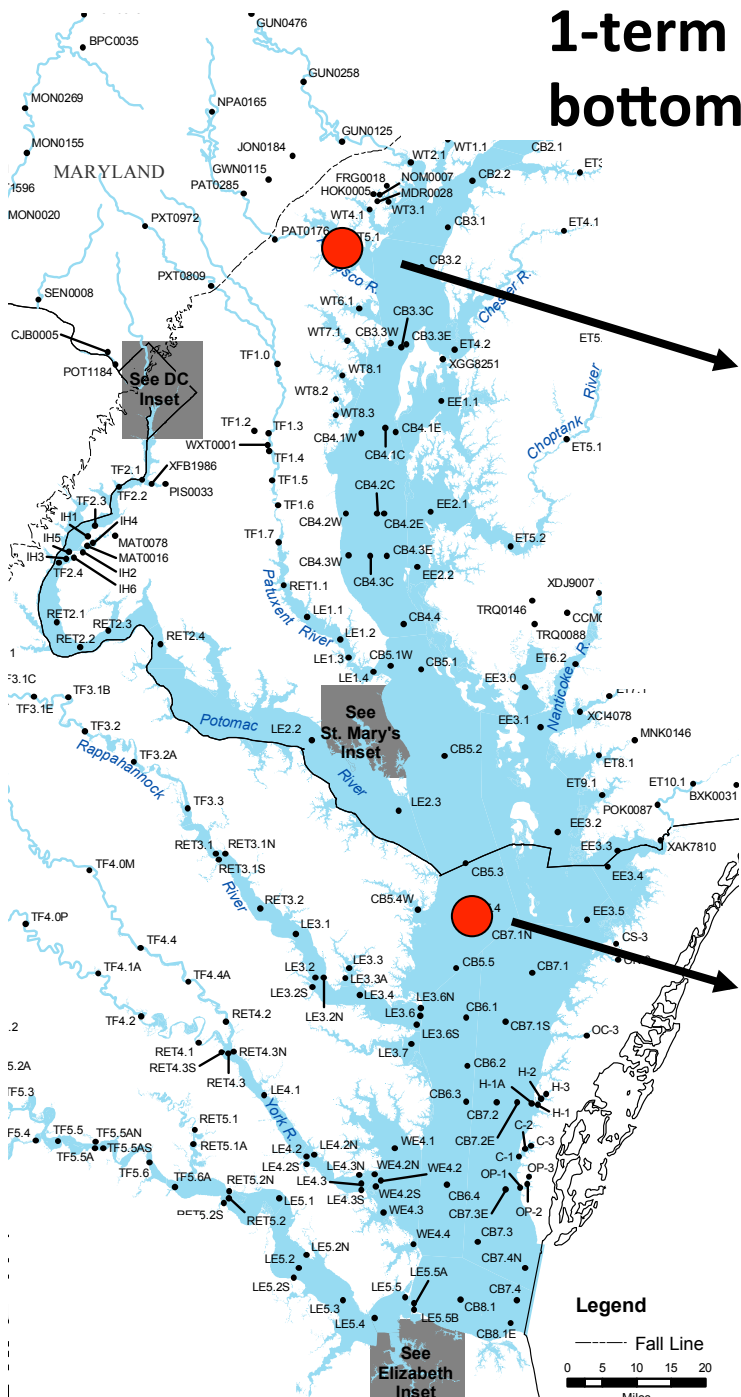
By adjusting the advection scheme in ROMS, the HVs now agree better with the data; maybe an adjustment to the advection in CH3D could result in a similar improvement?

15-year time series (1991-2005) mean bottom DO

All models do well at many of the CBP stations

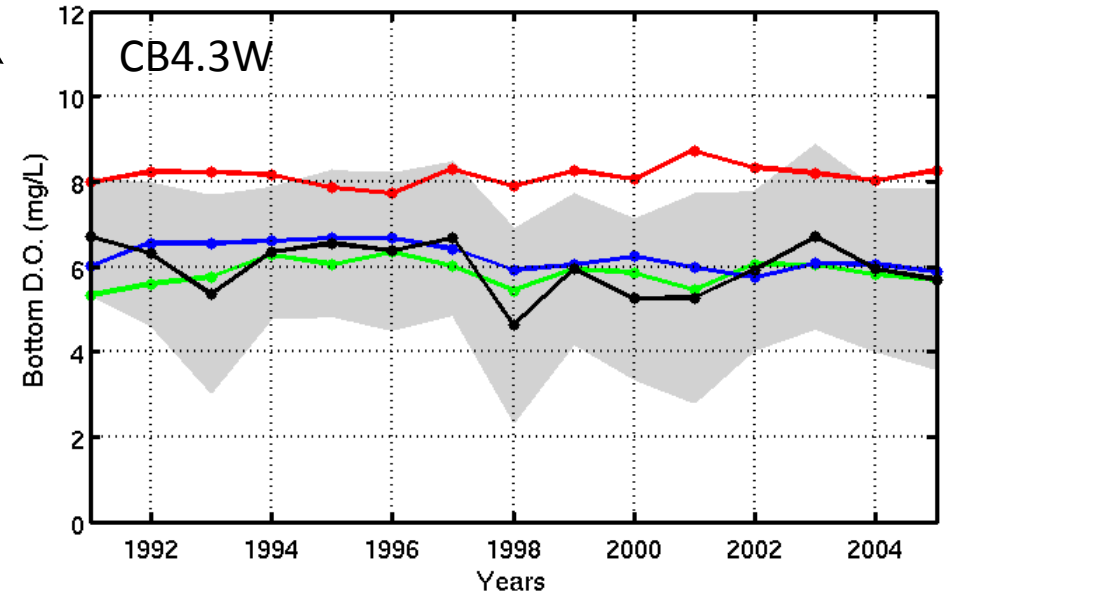
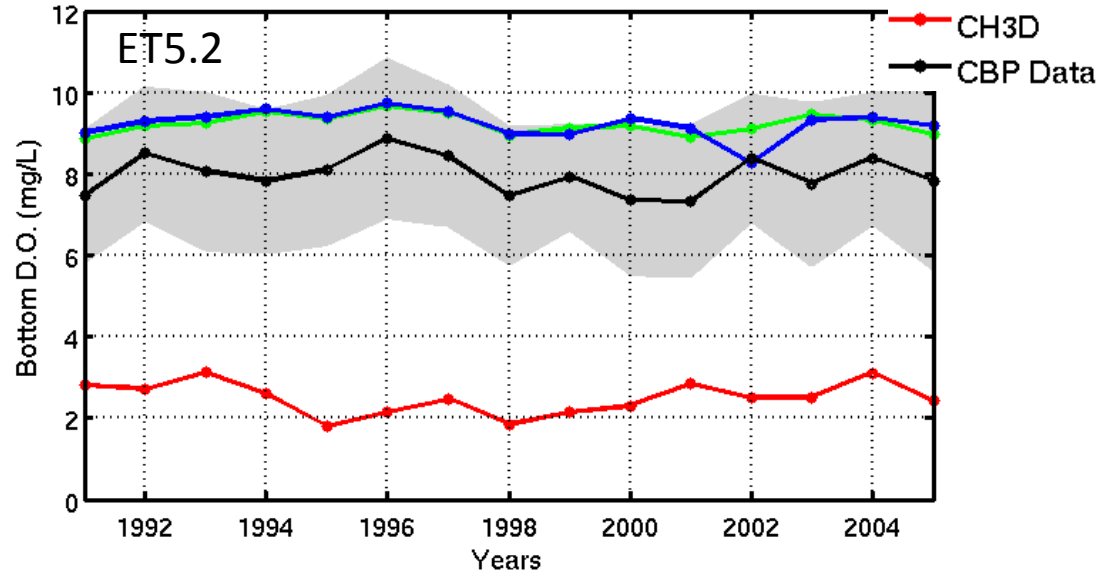
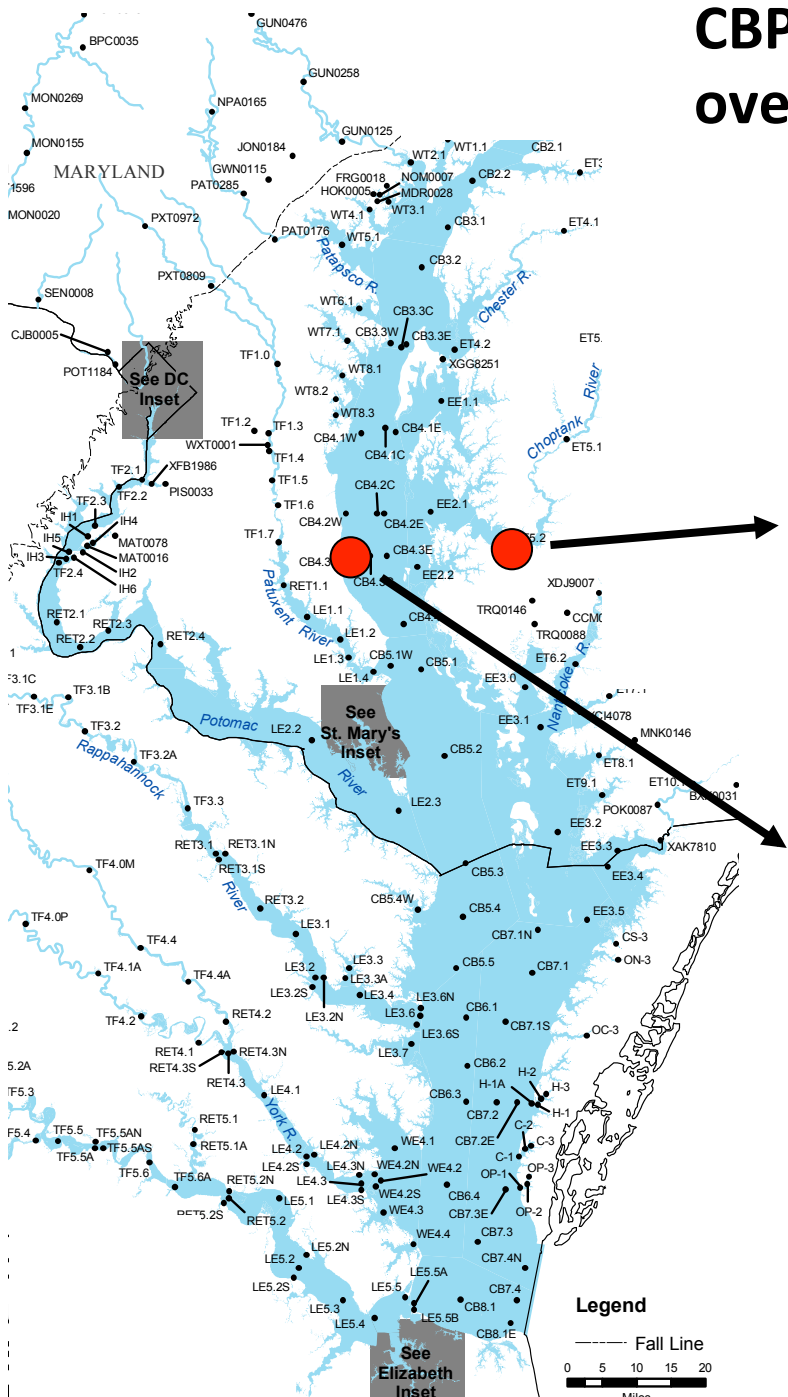


1-term Scully models overestimate annual mean bottom DO in north and underestimate in south



CBP model underestimates in east; overestimates in west

- Error
- ◆ ScullyOld
- ◆ ScullyNew
- ◆ CH3D
- ◆ CBP Data



What have we learned from the U.S. IOOS multiple modeling effort?

Specifically...

- Multiple hydrodynamic+DO models exist for the Bay
- CBP model does very well!
 - Increased academic confidence in and support for the CBP model
- Other models do nearly as well, especially in terms of reproducing DO
 - Even though they are not reproducing stratification as well as CBP model, they can still reproduce DO fields
- Simple constant net respiration rate models reproduce mean and variability of DO surprisingly well
- Averaging output from multiple models provides better hypoxia hindcasts than relying on any individual model alone
- New ROMS with improved advection scheme shows great promise

What have we learned from the U.S. IOOS multiple modeling effort?

More generally...

Critical importance of:

- quantitatively assessing model skill
- multiple open source, community models
- large group of people from multiple institutions, all collaborating on CB modeling issues

Recommendation for CBP modeling program (from STAC):

- use a multiple modeling strategy
- begin with a multiple shallow water model pilot project

- **Lessons learned from the U.S. IOOS Estuarine Hypoxia Testbed model comparison project in the Chesapeake Bay**



- **Recommendations from the STAC sponsored M3.1 workshop, concerning the multiple shallow water model pilot project**

M3.1 Workshop

Virginia Institute of Marine Science

April 26-27, 2012

➤ Overall Recommendation:

A multiple shallow water model pilot project is key to the advancement of the CBP modeling program and should begin as soon as possible.



Workshop report (Friedrichs, Sellner & Johnston, 2012)
available online at:

http://www.chesapeake.org/pubs/291_Pyke2012.pdf

Pilot Project Rationale

➤ Need for multiple modeling efforts:

- Help determine whether the regulatory model is as skillful as other models of the Bay
- Build scientist, management and stakeholder confidence in the model at a time when confidence in the regulatory model is low
- Excellent opportunity for the CBP to heed recommendations suggested in several recent CBP reports and reviews



Pilot Project Rationale (cont.)

➤ Need for new shallow water modeling efforts:

- Modeling WG has identified limitations to existing model in the shallowest, most productive part of Bay
- Because DO & water clarity are criteria that must be met to delist the Bay, the Modeling WG has suggested that additional modeling approaches need to be considered in these waters



Pilot Project Outcomes

➤ Project Outcome:

- Identification of new model for the shallow waters and/or suggested improvements to existing model
- Confidence estimates for CBP shallow water simulations
- Demonstration of utility of using multiple CB models, in response to recommendations of previous NRC/STAC reports/reviews



Pilot Project Methods

➤ Methods:

- Shallow water hydrodynamic+water quality modelers will be sought for participation in a 1-2 yr pilot project
- Each modeling team will:
 - Use common forcing to implement 3-5 year base case runs at specified times and sites
 - Provide daily distributions of variables relevant for SAV (T, S, DO, light, nutrients)
 - Provide results as above after forcing model with specified nutrient reduction scenarios



Pilot Project Methods

➤ Methods (cont.):

- A separate model comparison team will:
 - Use daily distributions from each model as input to a specified empirical SAV model
 - Use state-of-the-art metrics to assess the relative skill of the participating simulations
 - Compare results of the modeled nutrient change scenarios
 - Analyze causes and impacts of differences among models



M3.1 Workshop

Virginia Institute of Marine Science

April 26-27, 2012

➤ Overall Recommendation:

A multiple shallow water model pilot project is key to the advancement of the CBP modeling program and should begin as soon as possible.



Workshop report (Friedrichs, Sellner & Johnston, 2012)
available online at:

http://www.chesapeake.org/pubs/291_Pyke2012.pdf