

# Modeling and Multiple Modeling in the Chesapeake Bay Program

- Models in the Chesapeake TMDL
- Future Multiple Model Activities
- CBP view of M3

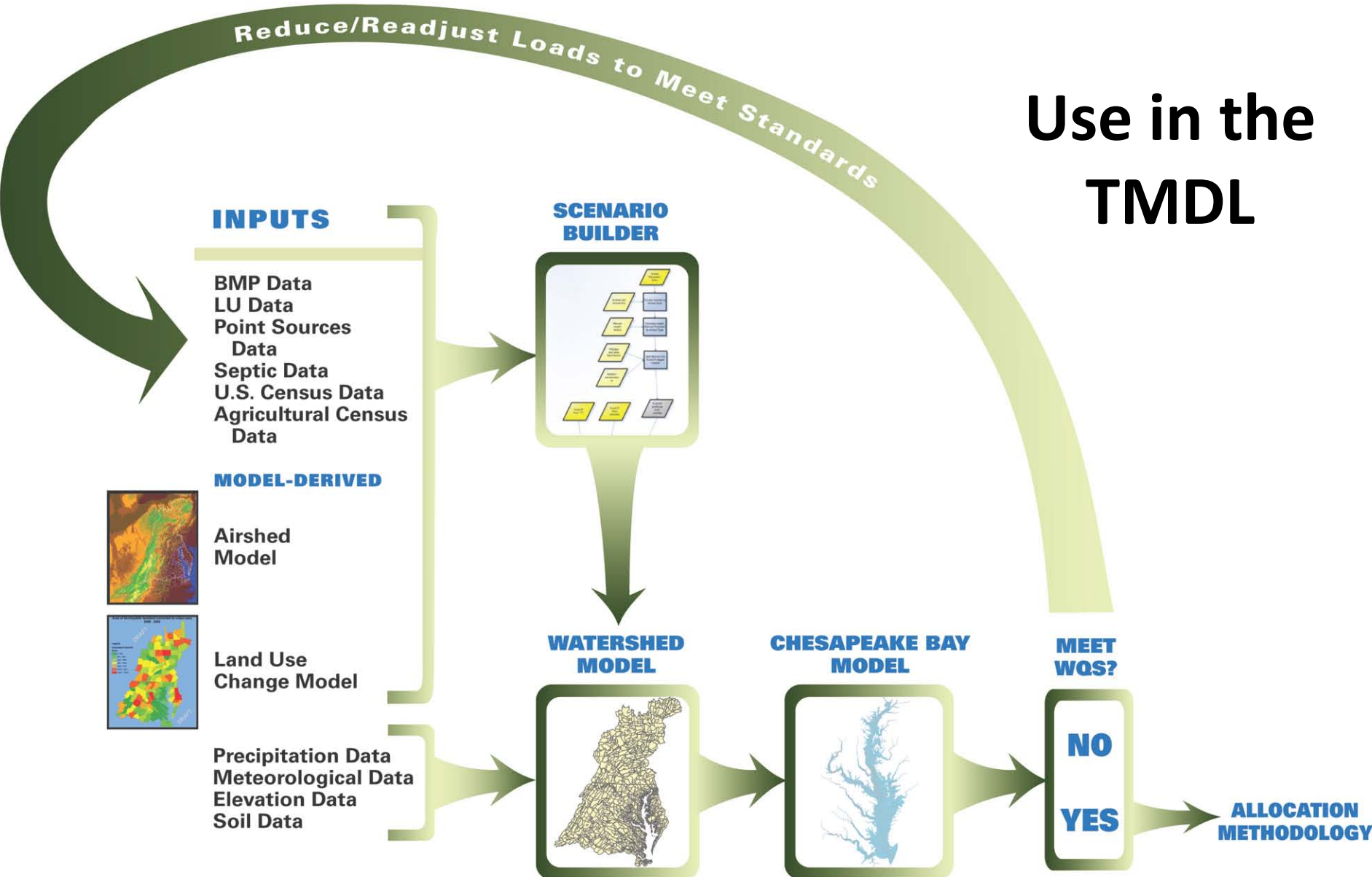
Gary Shenk EPA – CBPO

2/25/13

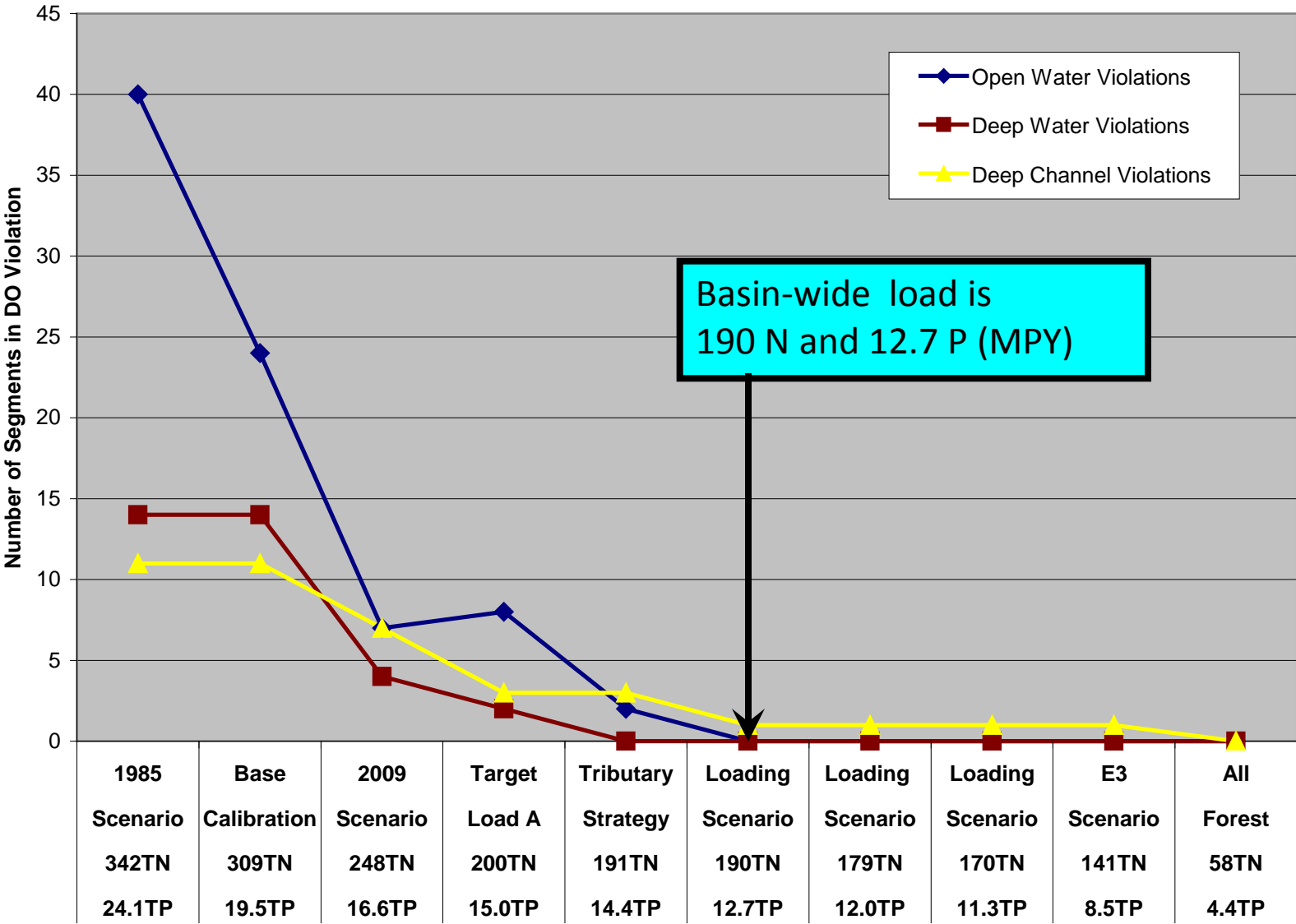
STAC Multiple Models for Management  
Workshop

# Chesapeake Bay Partnership Models

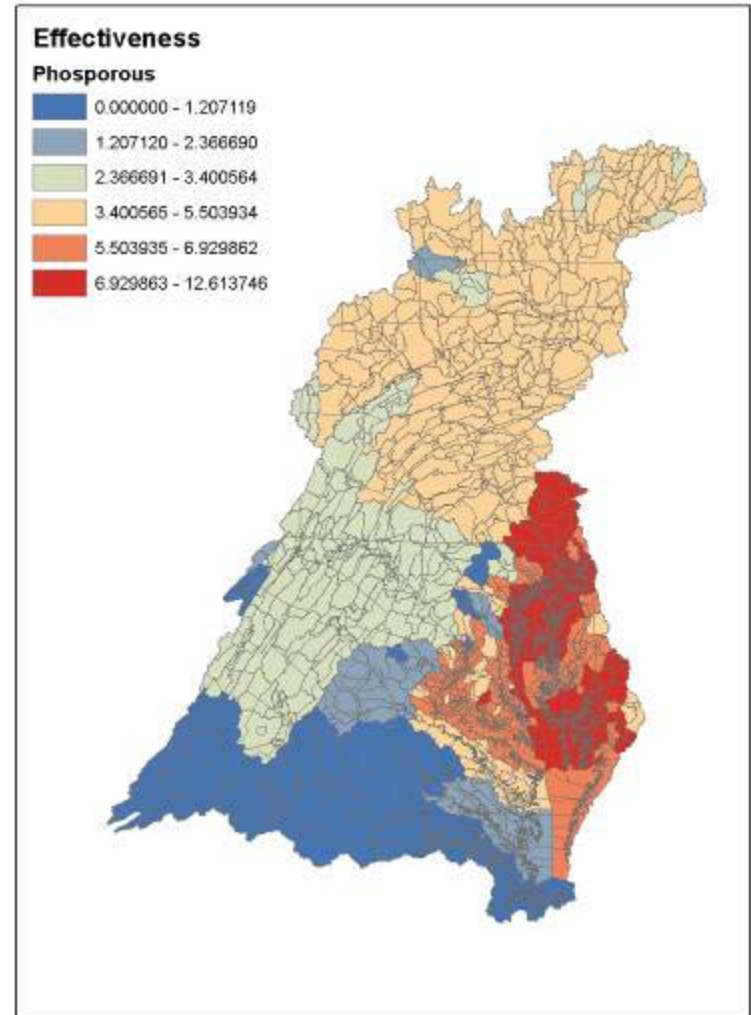
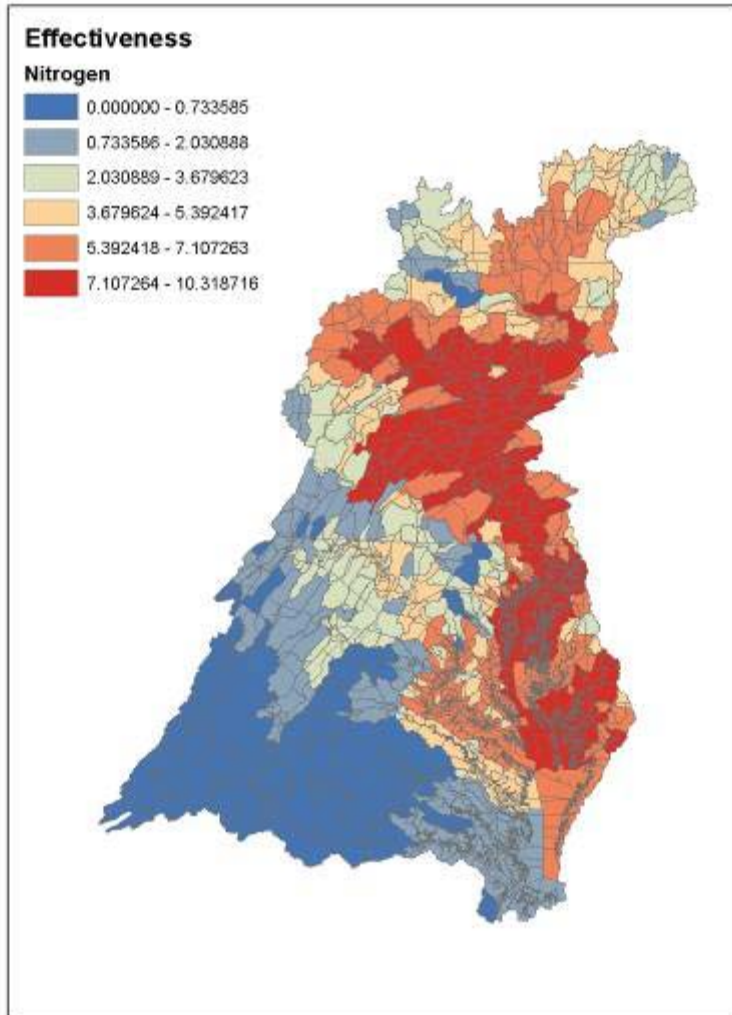
## Use in the TMDL



# Use of modeling suite in the Chesapeake TMDL

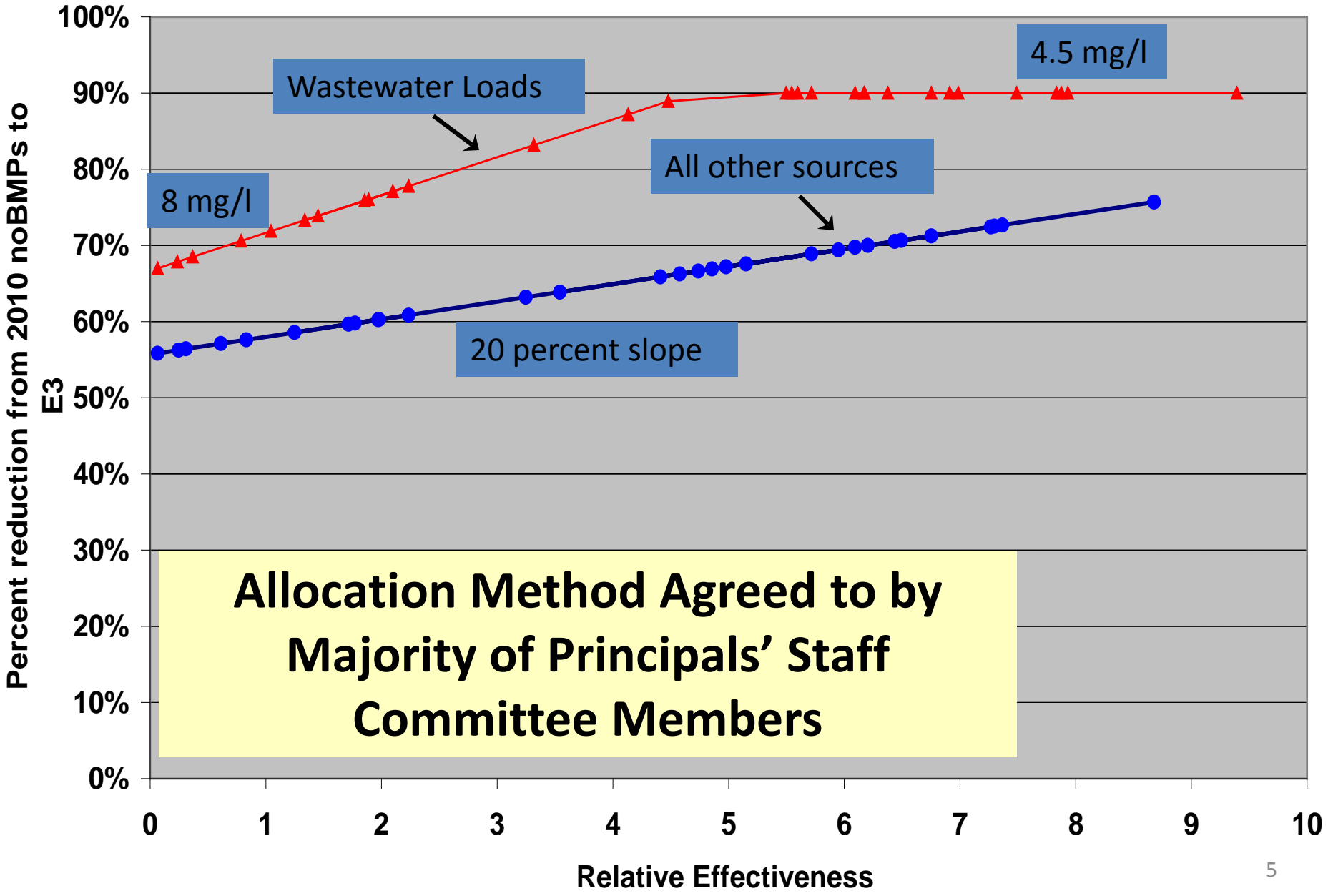


# Nutrient Impacts on Bay WQ

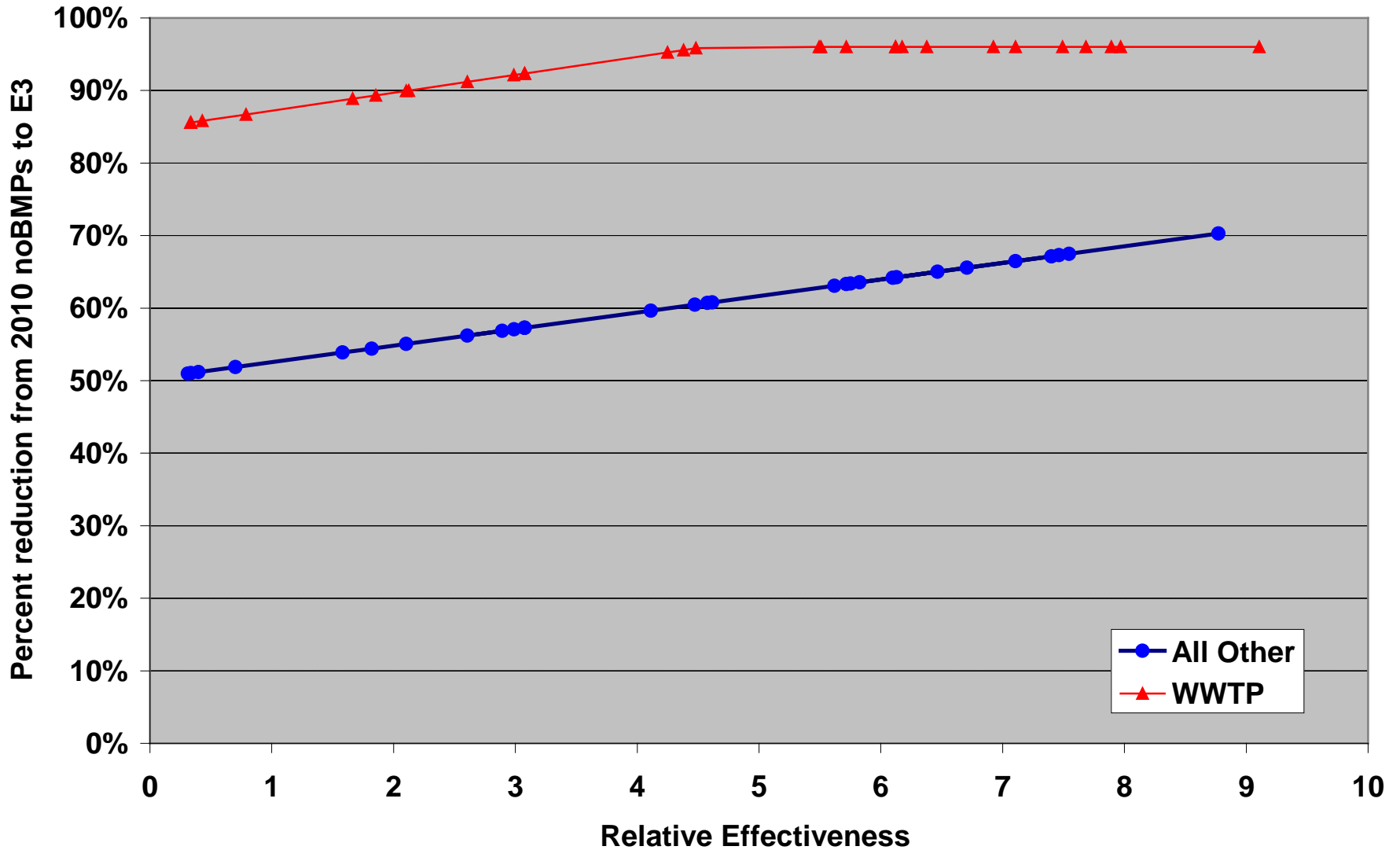


TN, p5.3, goal=190, WWTP = 4.5-8 mg/l, other: max=min+20%

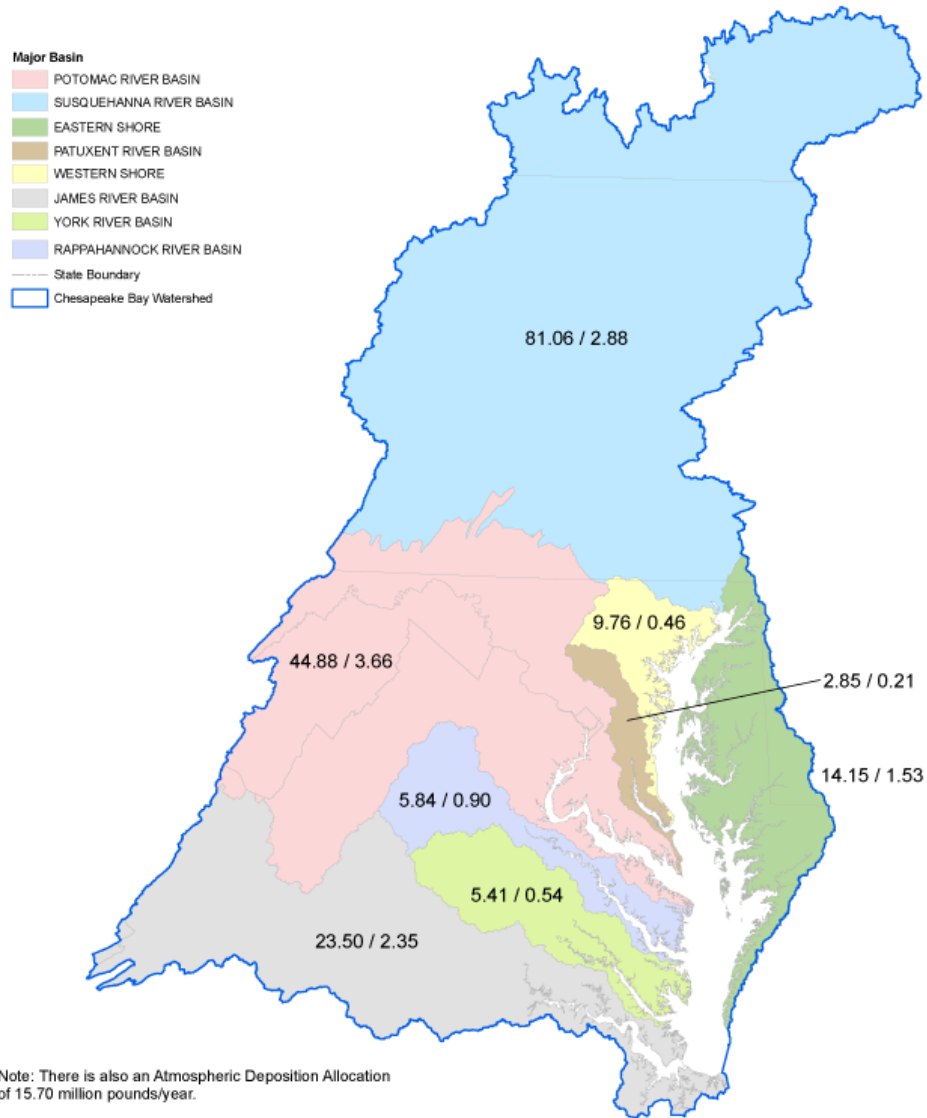
- All Other
- ▲ WWTP



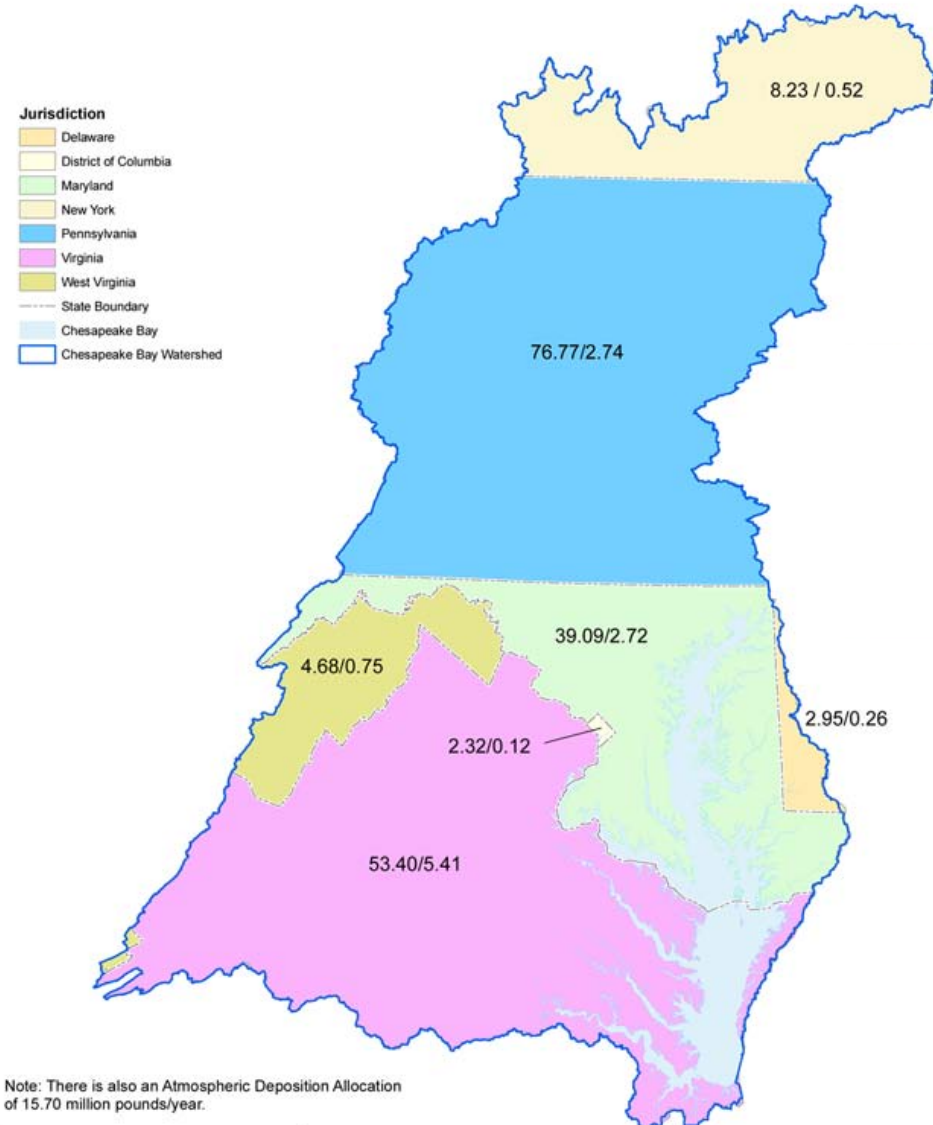
### Phosphorus -- phase 5.3 -- Goal=12.67 million lbs



# Pollution Diet by River



# Pollution Diet by State



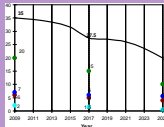
# Accountability Framework

**1. Watershed Implementation Plans** identify nutrient and sediment targets that meet water quality standards.



## Components of Bay TMDL Accountability Framework

**2. 2-Year Milestones**



with programmatic and pollutant reduction commitments

**3. Track and Assess Progress**



implementing WIPs and milestones

**4. Federal Actions**

if insufficient Watershed Implementation Plans or 2-year milestones



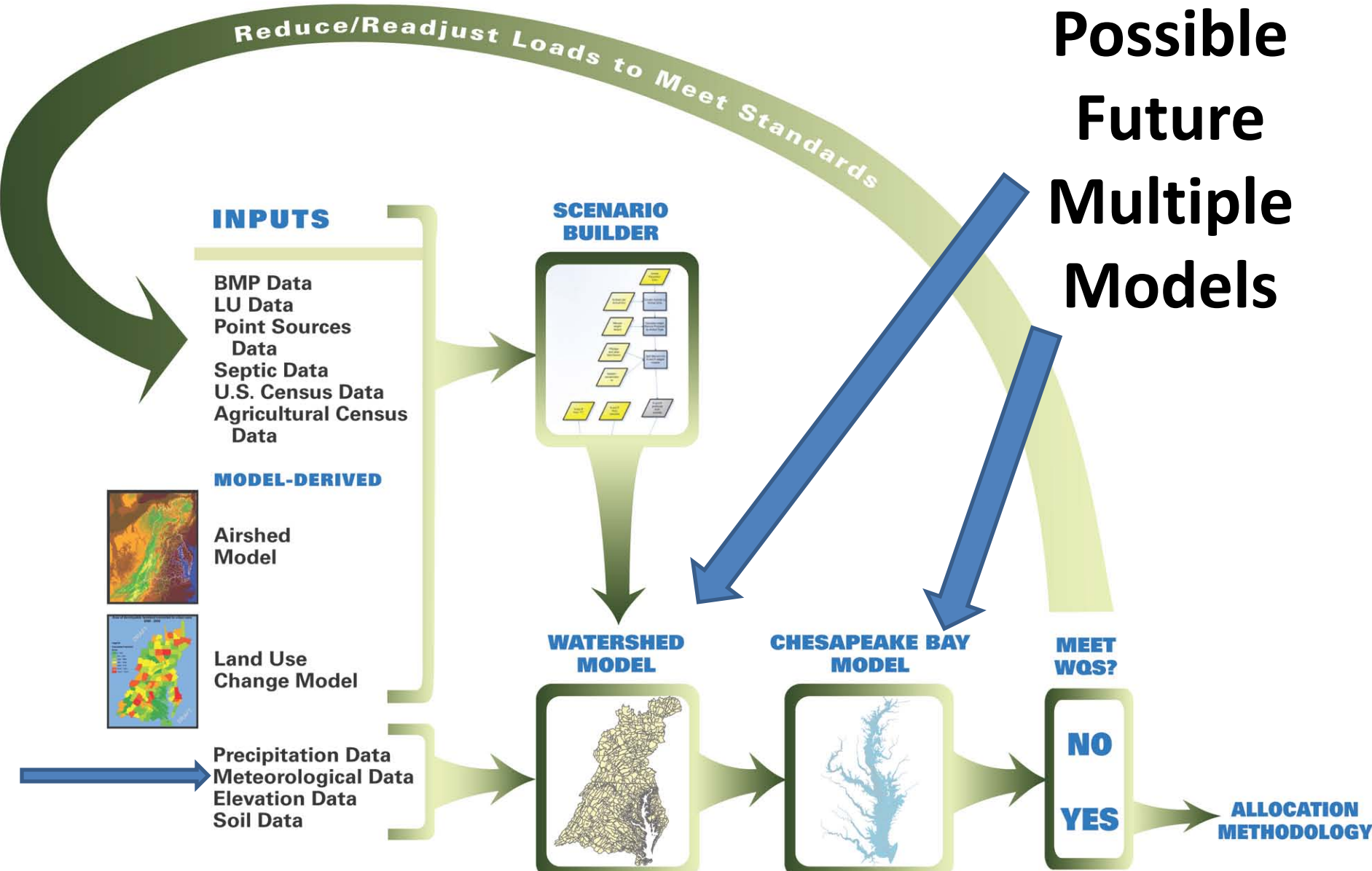


# TMDL Margin of Safety

- $TMDL = WLA + LA + MOS$
- Chesapeake TMDL
- $TMDL = WLA + LA$ 
  - Models has sufficient conservative assumptions to consider the margin of safety as implicit.

# Chesapeake Bay Partnership Models

Possible  
Future  
Multiple  
Models

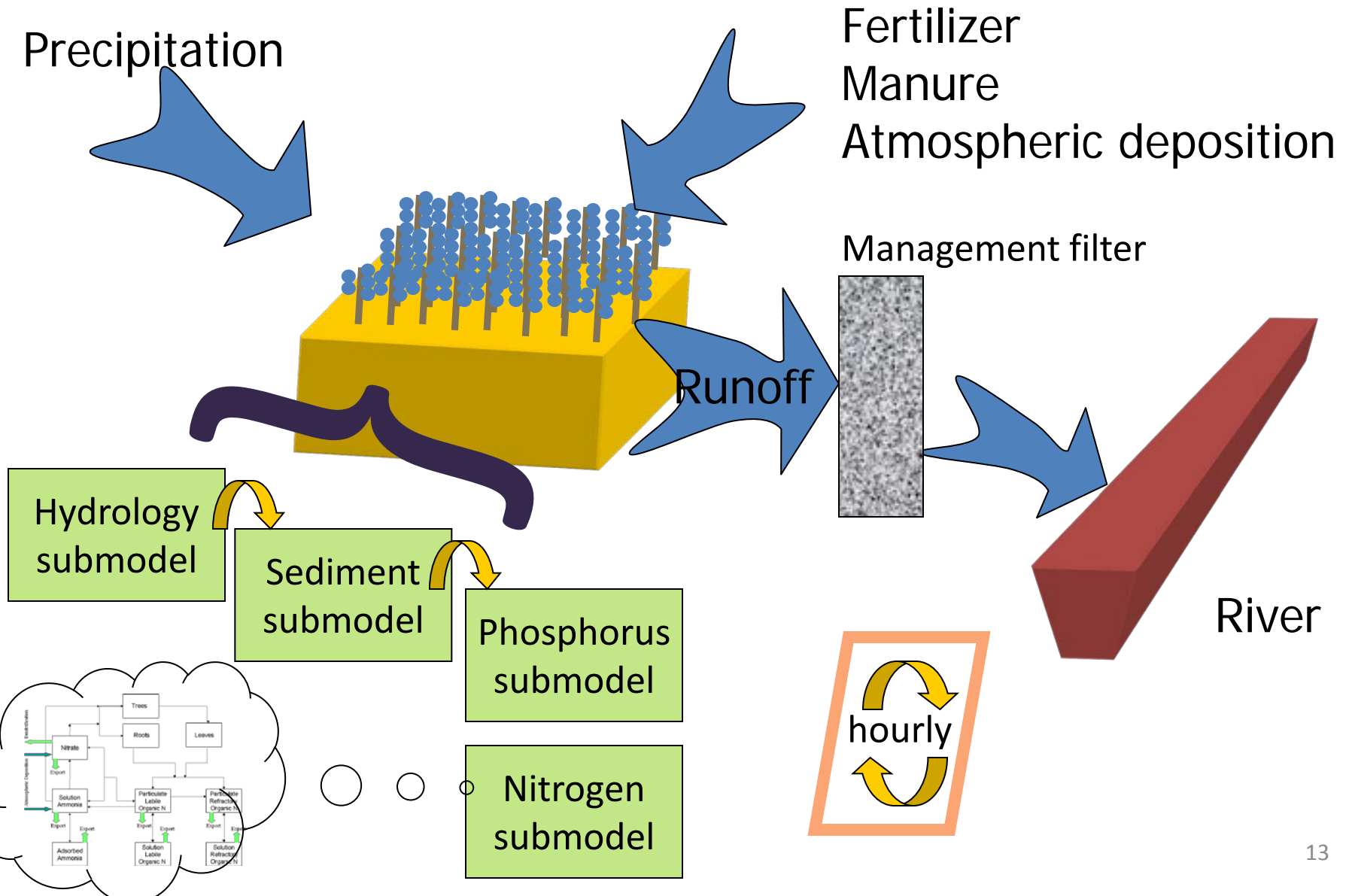




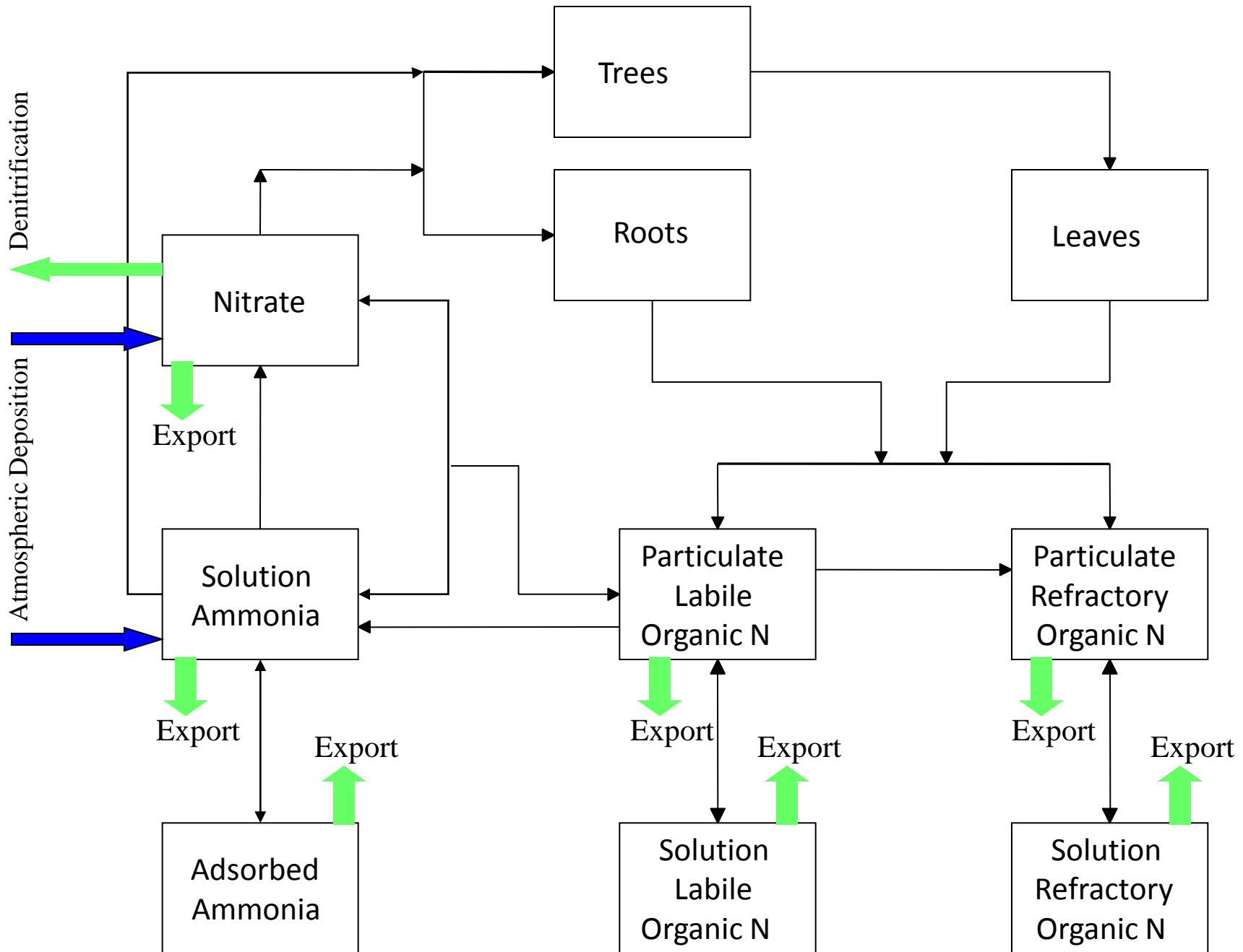
*Insert memory of  
Marjy's presentation  
here*

Big caveat: Can we make the money available?

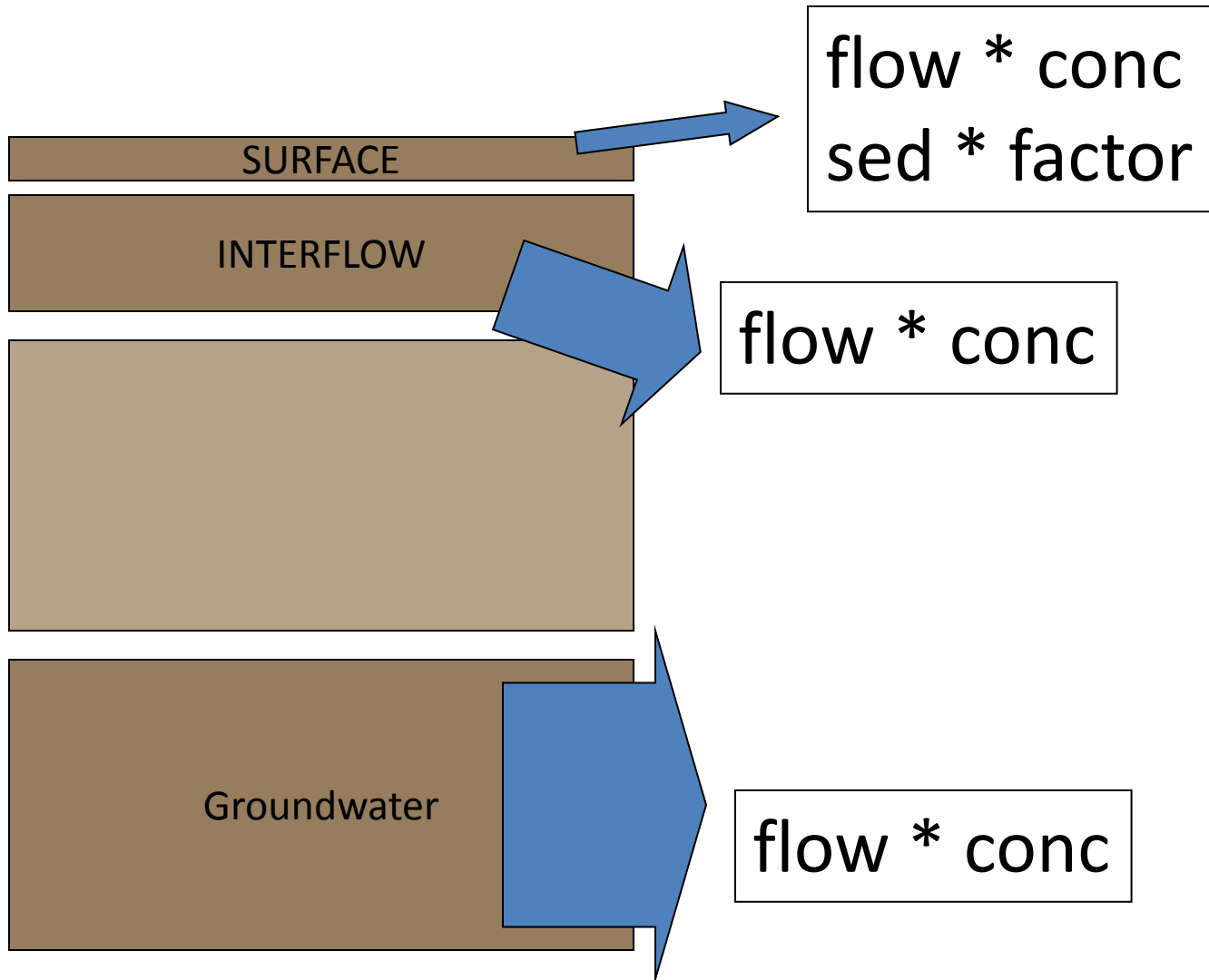
# Multiple Models in the Watershed Model



# AGCHEM Loading Model - simulated separately in each soil layer



# PQUAL loading model

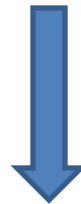


# AGCHEM

vs

# PQUAL

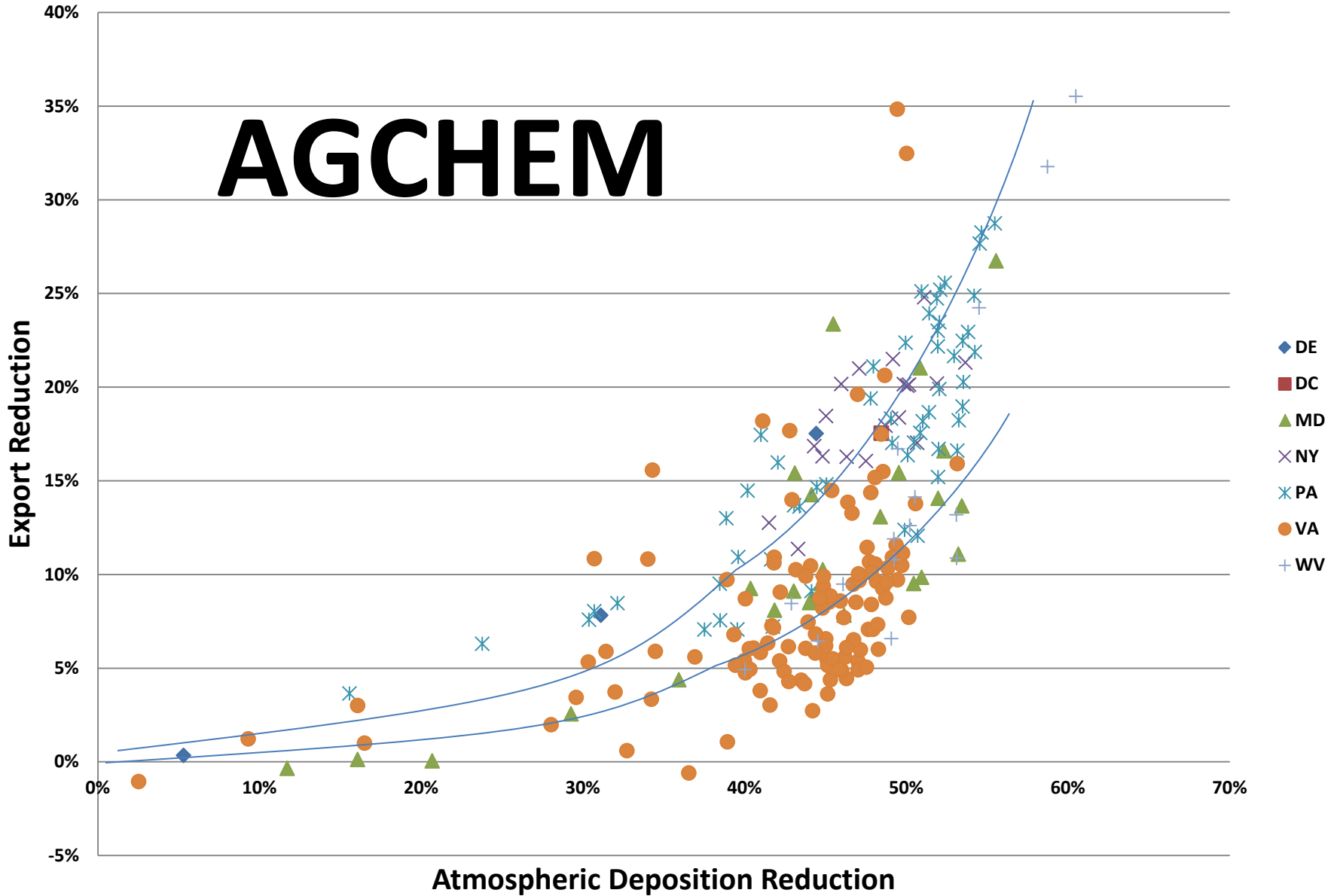
- Calibration is complex and time consuming
  - Calibration is imprecise
  - Longer run time
  - Simulated sensitivity to inputs
- Calibration is relatively simple and fast
  - Calibration is precise
  - Shorter run time
  - Sensitivity to inputs must be specified



**Multiple  
Models**

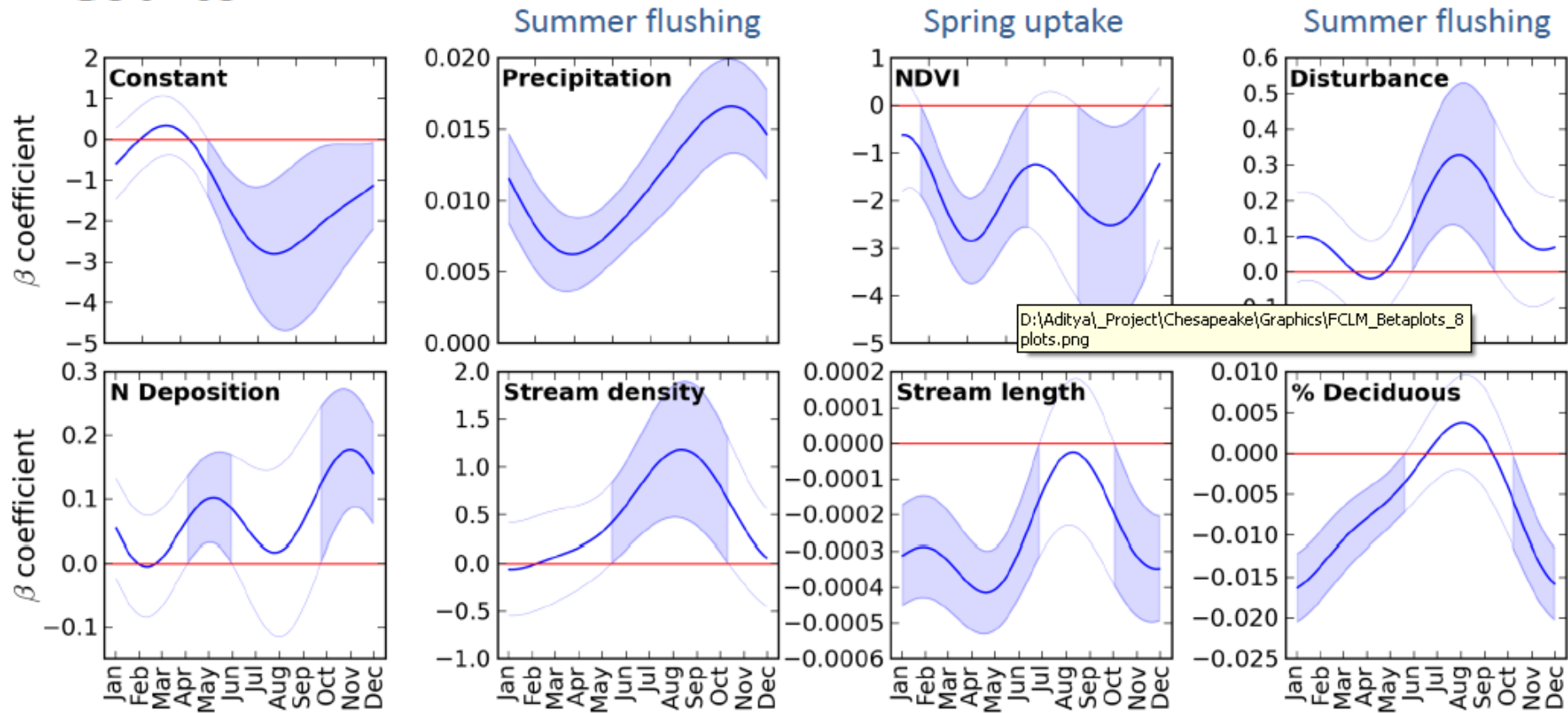
# Reduction in forest loads 1985 to CAIR

# AGCHEM



# Results:

## Regression of monthly nitrate yield



## Estimating nitrate export from Chesapeake Bay watersheds using MODIS and climate data

Aditya Singh and Phil Townsend

Angélica Gutiérrez-Magness

Keith Eshleman

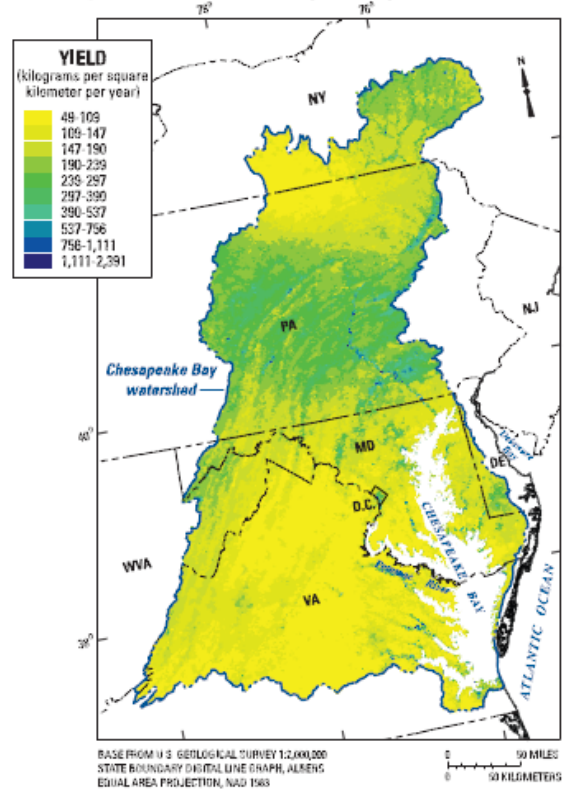
Brenden McNeil



# SPARROW Surface Water-Quality Modeling

- [NAWQA Home](#)
- [Model Description](#)
- [Fact Sheet](#)
- [Decision Support System](#)
- [FAQs](#)

A. Local yields attributable to atmospheric deposition



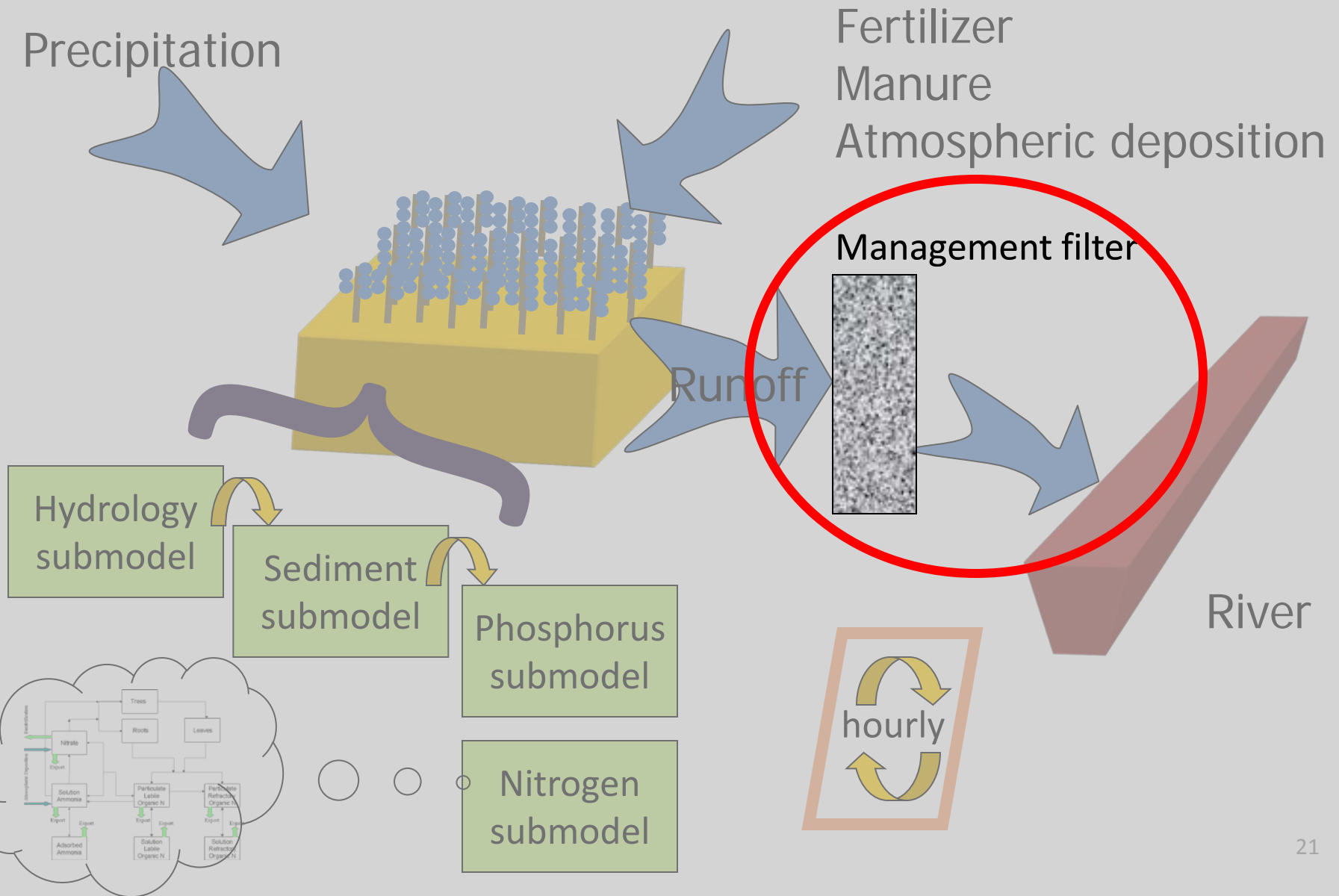
**Total Nitrogen, 2002**  
 (n = 181, MSE = 0.0836, RMSE = 0.289, flux R<sup>2</sup> = 0.978, yield R<sup>2</sup> = 0.856)

Explanatory variables	Estimate	Units	90-percent confidence interval	Standard error	p <sup>1</sup>
<b>Sources</b>					
Point sources (kg yr <sup>-1</sup> )	0.774		0.375 – 1.17	0.242	0.0008
Crop fertilizer and fixation (kg yr <sup>-1</sup> )	0.237		0.177 – 0.297	0.0363	< 0.0001
Manure (kg yr <sup>-1</sup> )	0.0582		0.0138 – 0.103	0.0269	0.0157
Atmospheric deposition (kg yr <sup>-1</sup> )	0.267		0.179 – 0.355	0.0533	< 0.0001
Urban <sup>2</sup> (km <sup>2</sup> )	1,090	kg km <sup>-2</sup> yr <sup>-1</sup>	707 – 1,480	234	< 0.0001
<b>Land-to-water delivery</b>					
ln[Mean EVI for WY02 (dimensionless)]	-1.70		-2.65 – -0.737	0.580	0.0039
ln[Mean soil AWC (fraction)]	-0.829		-1.26 – -0.401	0.260	0.0016
ln[Groundwater recharge (mm)]	0.707	mm <sup>-1</sup>	0.499 – 0.916	0.126	< 0.0001
ln[Piedmont carbonate (percent of area)]	0.158		0.0755 – 0.241	0.0500	0.0018

# Benefits

- The CBP Partnership wants transparency:
  - Simplicity
  - Scalability
  - Ease of Use
  - Understandability
- Ease of calibration and operations
- Clear role for multiple models

# Multiple Models in the Watershed Model



# Expert Review Panels; Planned and Active

## Agriculture

- Nutrient Management
- Poultry Litter
- Conservation Tillage
- Cover Crop Panel
- Manure Treatment Technologies
- Animal Waste Storage Systems
- Manure Injection/Incorporation
- Cropland Irrigation Management

## Urban

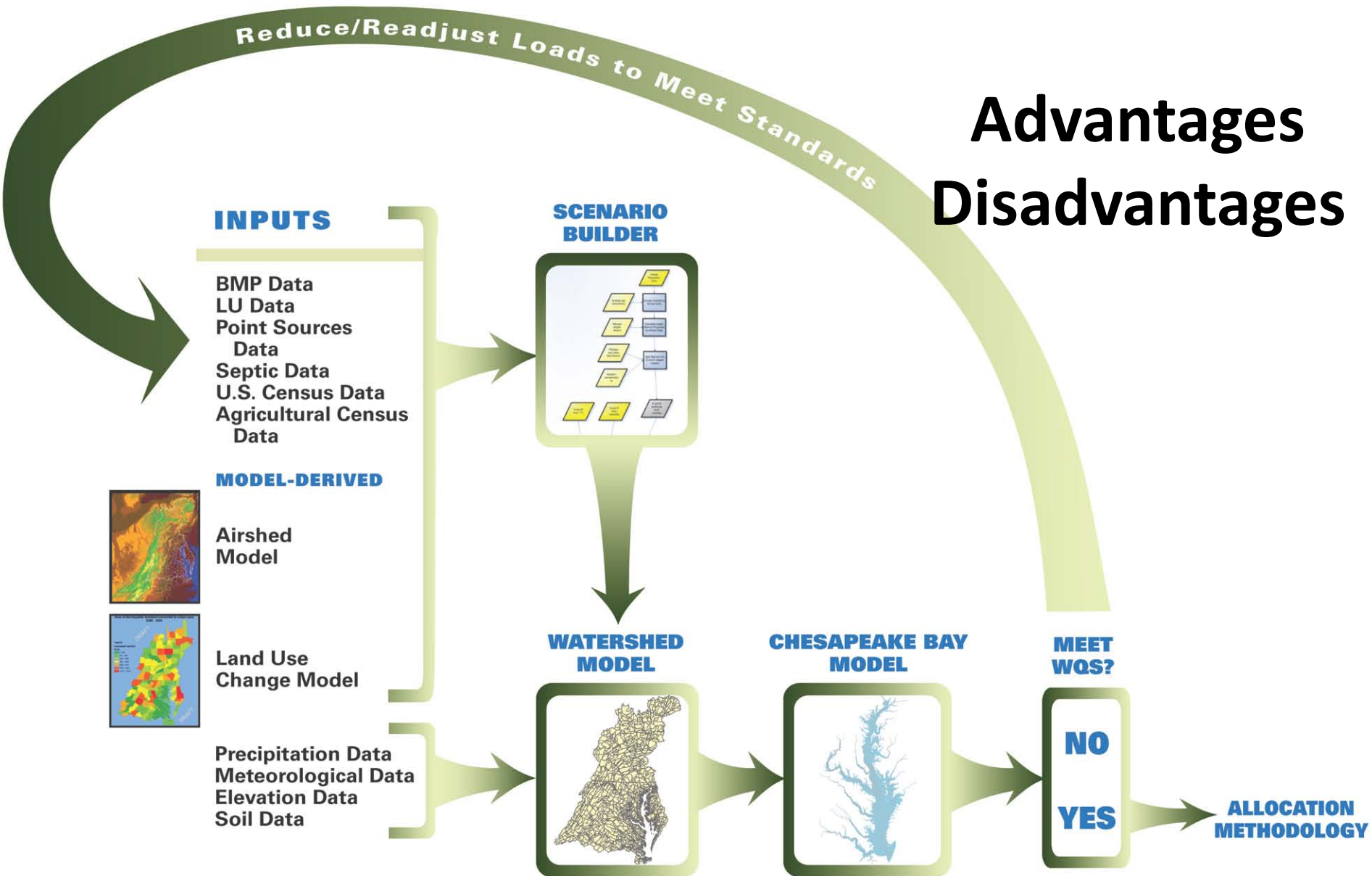
- Urban Retrofits
- Performance Based Management
- Stream Restoration
- LID and Runoff Reduction
- Urban Fertilizer Management
- Erosion and Sediment Control
- Illicit Discharge Elimination
- Impervious Disconnect
- Floating Wetlands
- MS4 Minimum Management Measures

## Forestry

- Riparian Buffers
- Urban Tree Planting
- Forest Management
- Urban Filter Strips and Upgraded Stream Buffers

# Multiple Models

**Advantages**  
**Disadvantages**



# Scientific advantages of MM

- Compares hypotheses about system function
- Identifies agreements (high confidence)
- Identifies disagreements (low confidence)
- Guides research and data collection
- Helps quantify uncertainties
  - Prediction uncertainty
  - Model selection uncertainty



# Possible management benefits

- Demonstrate skill of decision model (as good or better than others)
- Bolster confidence (scientists, managers, & public) in model and decisions based upon it



# Possible objections to MM

- More work, costs more
- Highlights uncertainties
- May confuse public and decision makers
- May provoke legal challenges
- May be incompatible with CWA and TMDL rules



# Possible objections to MM

- More work, **costs**

**more**



- Highlights uncertainties
- May confuse public and decision makers
- May provoke legal challenges
- May be incompatible with CWA and TMDL rules

# Difference between Hurricane and TMDL: Managers decide where the TMDL lands

Phosphorus -- phase 5.3 -- Goal: 2.67 million lbs

