

WMD Marcellus Shale Development & Water Resource Monitoring

10/22/12 Workshop Summary

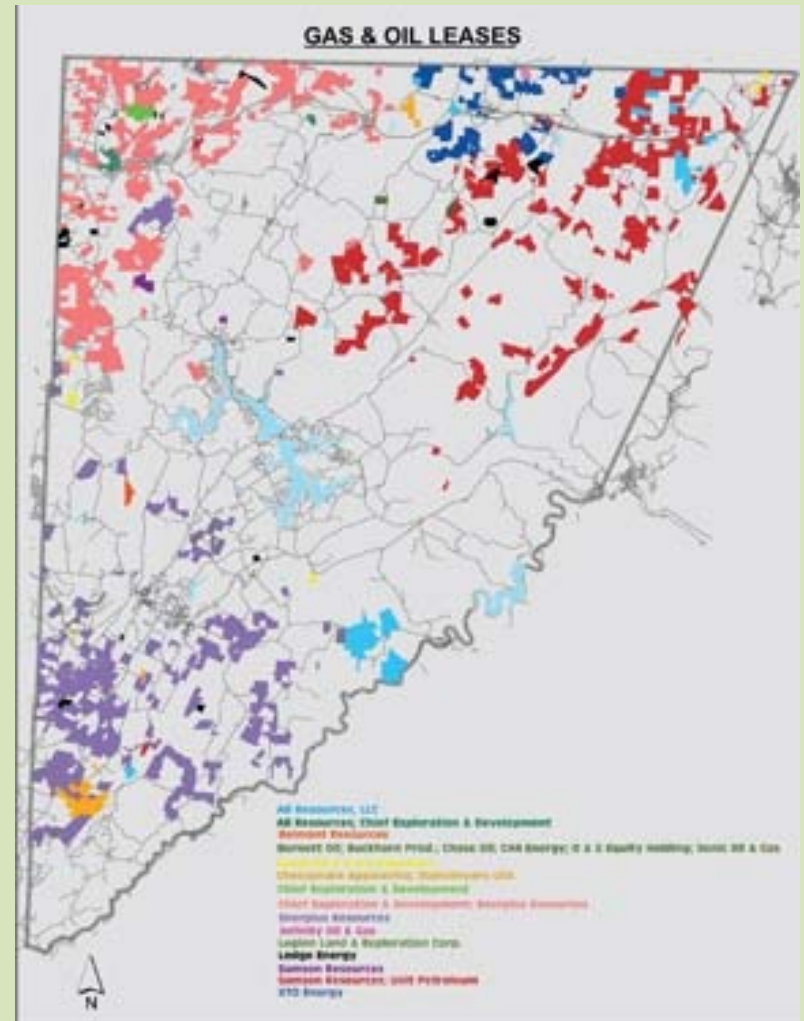
Kevin Sellner

CRC

4 December 2012

Worry for 2014

- No current permits but gas co. watershed interest
- MD Gov. EO 6/2011: MD Marcellus Shale Safe Drilling Initiative
- MD DNR monitored 12 stream reaches in 2011
- Marcellus Shale Stream Monitoring Coalition=62 reaches
- Overall <15% of stream reaches facing impact are monitored



Activities

- Multiple MDE, DNR 2011 requests to legislature defeated
- Multi-Federal agency (EPA, DOE, DOI, USACE, USDA) recs due
- MD: BACI through 2014; other surface water sampling modeled after SRBC
- On-going private well monitoring (MD GW Quality Network, considering NYS approach for methane, other gases; radioisotopes)
- UMCES literature search for recs on most protective suites of practices

Issues

- Flowback WQ, conductivity, turbidity, benthic inverts
- GHGs: Methane+
- Fracture systems in region
- Water supply
- On-site treatment vs. injection far offsite & seismic activity
- Pipelines & pads for habitat disruption
- Radioisotopes