



The Chesapeake Bay Watershed and Knowledge Systems for Sustainability

Denice Wardrop & Lara Fowler
Penn State University

11 June 2013

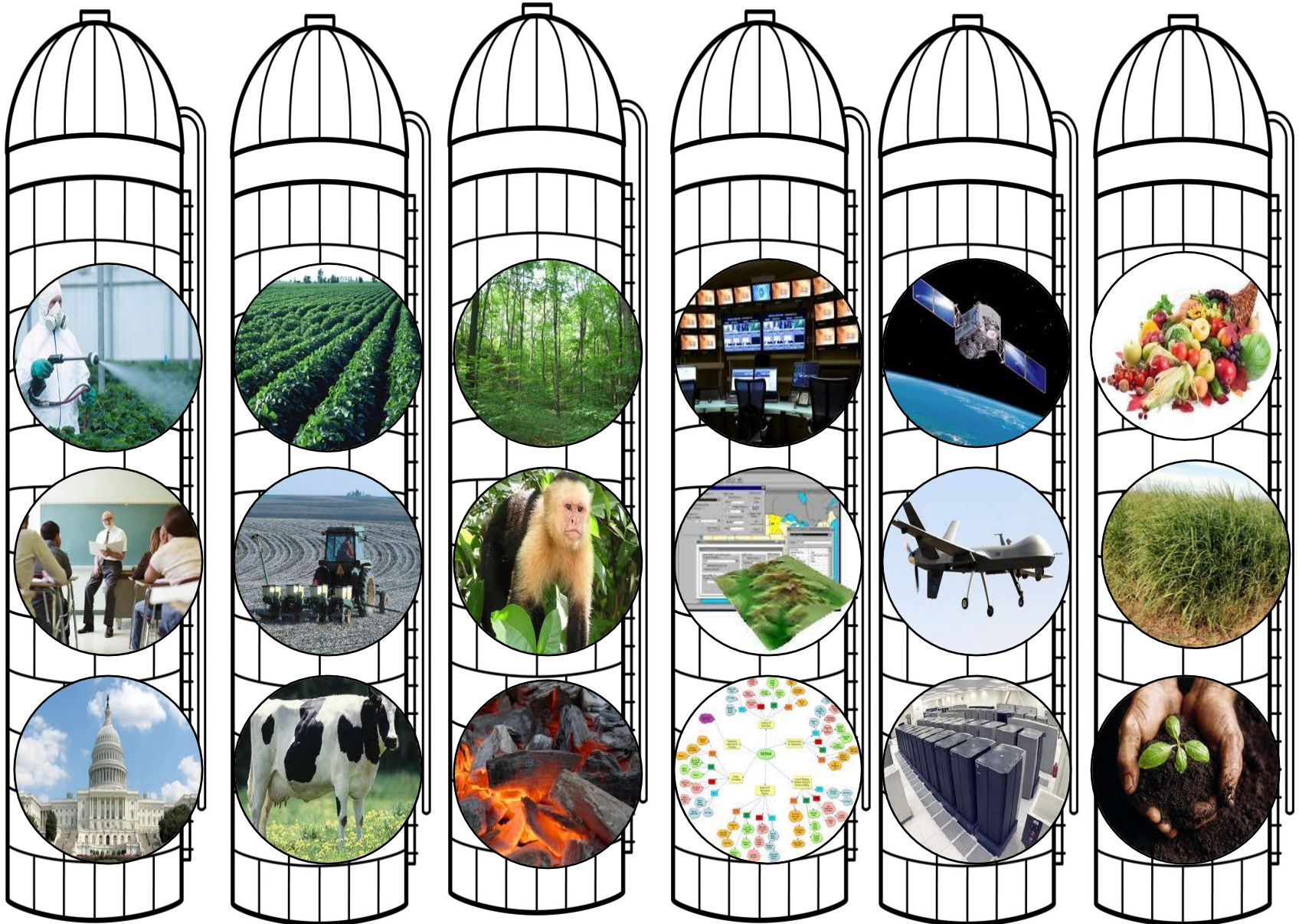


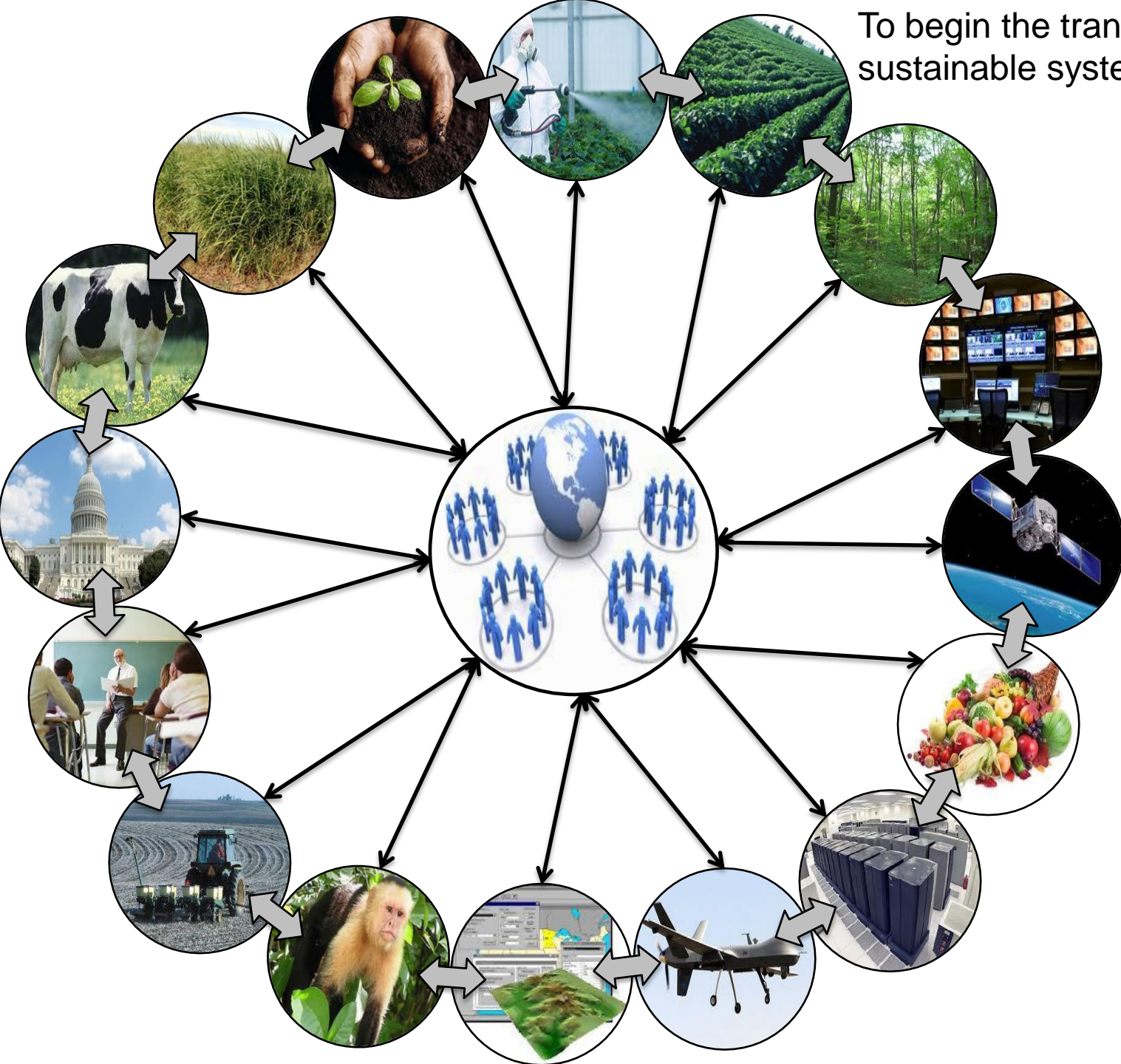
Chesapeake Bay Program & Knowledge Systems for Sustainability

Quick timeline:

- Oct. 2012 introduction at Penn State
- Nov. 2012 follow up discussion at Oak Ridge
- May 2013 discussion in Annapolis
 - Introduction of ideas
 - Exploration of possibilities

Our socio-ecological systems are highly siloed



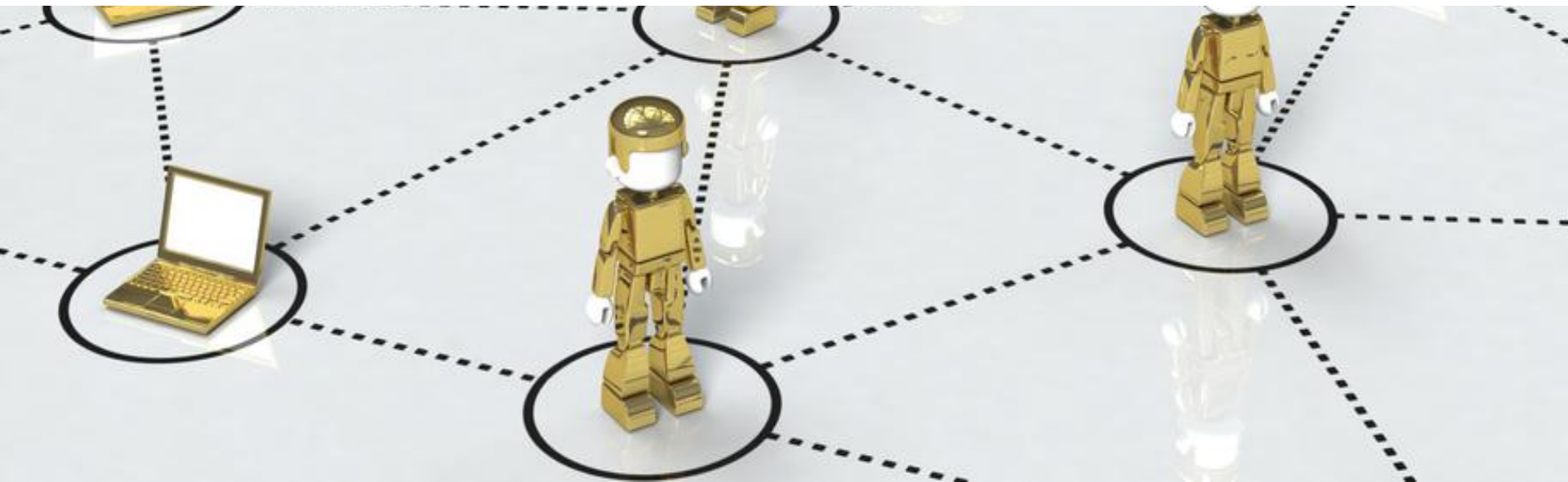


To begin the transition to a more sustainable system, we must:

- Connect and align current investments
- Create an active learning ecosystem
- Represent non-traditional disciplines
- Focus on the need of decision makers and stakeholders



A vision for the future?
Working to create trusted information sharing
environments in a pre-competitive space,
across sectors, for collective benefit



Critical issues

land, water, energy

real &
measurable
restoration

Resources

technical, financial, other

- Data systems + models

- Decision sciences

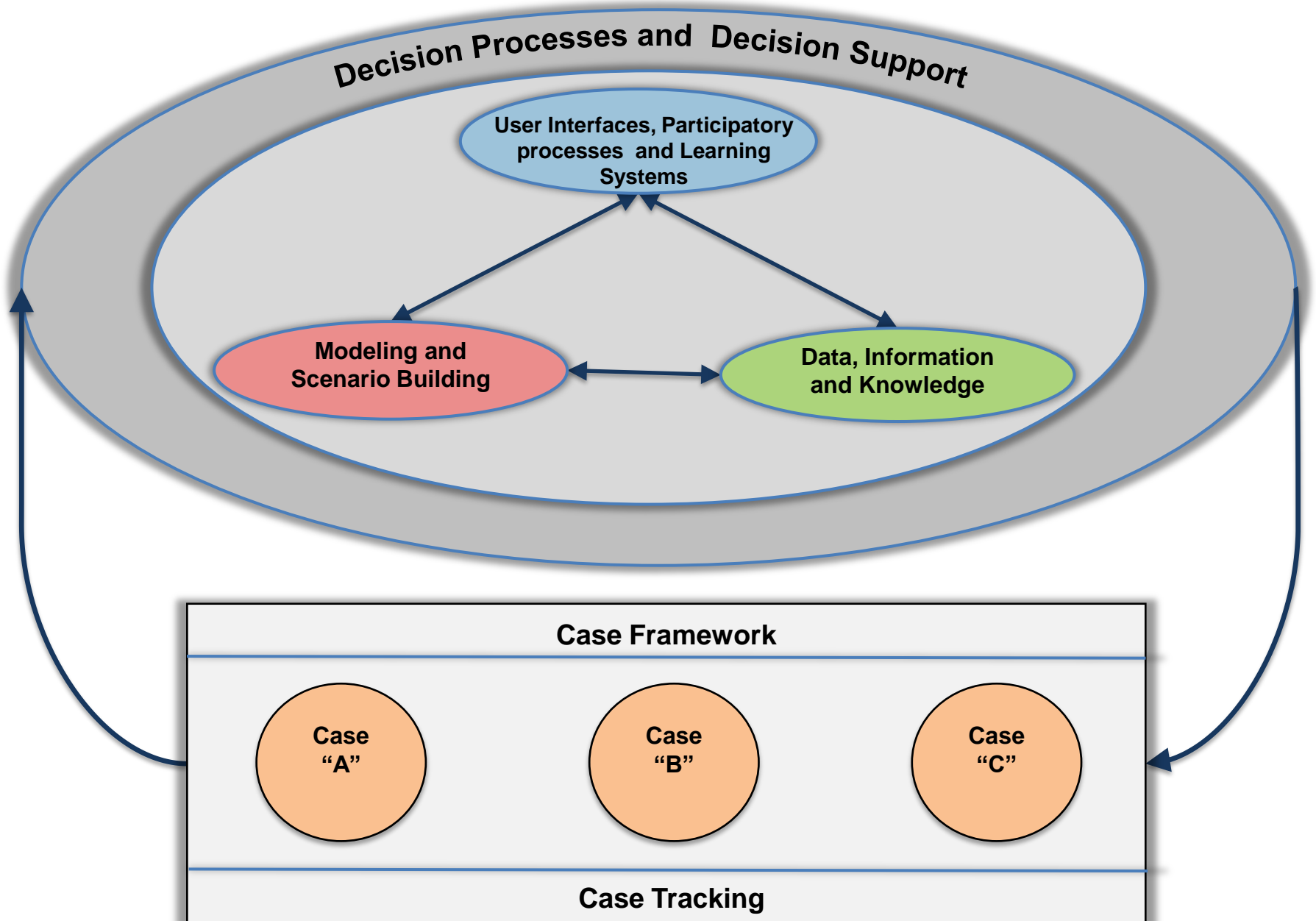
Knowledge

research \leftrightarrow decision makers

- Multiple scales

- Multiple decisions

Dimensions of a KSS Platform



KSS Portal – Starting the experiment

Knowledge System for Sustainability

How to feed 9 billion people and not wreck the planet?

KSS Search

I'm Feeling Lucky

- Constructing the knowledge-to-action and action-to-knowledge pathways
- Begin tracking the impacts of each intervention
- Compare the structural and functional similarities and differences of Cases
- Adaptively manage for the needs of the decision maker

May 2-3 2013 Discussion

Areas of Concern (A. Swanson)

- Manure management
- Storm water
- Backdrop of population growth



Photos from Chesapeake Bay Program



May 2-3, 2013 Discussion

CBP identified action items for follow up:

1. Integrate social sciences
2. Develop modeling laboratory
3. Develop spatially explicit + scalable tools
4. Build new relationships, expand existing partnerships to leverage change
5. Leverage additional resources beyond current scope of CBP

Follow Up So Far...

May

- Meeting with Ann Mills, USDA
- Discussion with Puget Sound Partnership
- Follow up discussion with Oak Ridge National Lab.

June

- Initial discussion at Penn State re: Dairy CAP project
- Exploration of potential positive examples
 - Wisconsin producers, other
- Draft document summarizing potential actions

Next Steps

- STAC meeting (today)
- Discussion with social science work group
- Outreach to producers
- Proposal for funding/resources/partners outside of CBP

Feedback from others attending May meeting?
Discussion?