



Adam Davis

Sustainable Fisheries Goal
Implementation Team

GIT 1



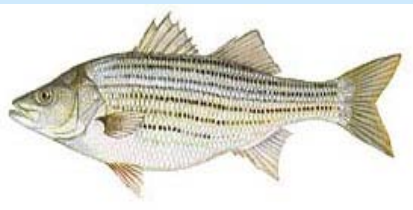
adavis@chesapeakebay.net

410-295-3159

Background

- Started with CRC in March, 2010
- B.A. in Biology from St. Mary's College of Maryland
 - Mostly environmental and ecological biology courses
- Summer Jobs
 - Oyster Aquaculture Job (2008-2010)
 - Johnny Oysterseed (<http://www.johnnyoysterseed.com/>)
 - Research & Development Lab Technician (2006-2008)
 - Sherwin-Williams Paints





Striped Bass



Menhaden

Fisheries

GIT



Shad

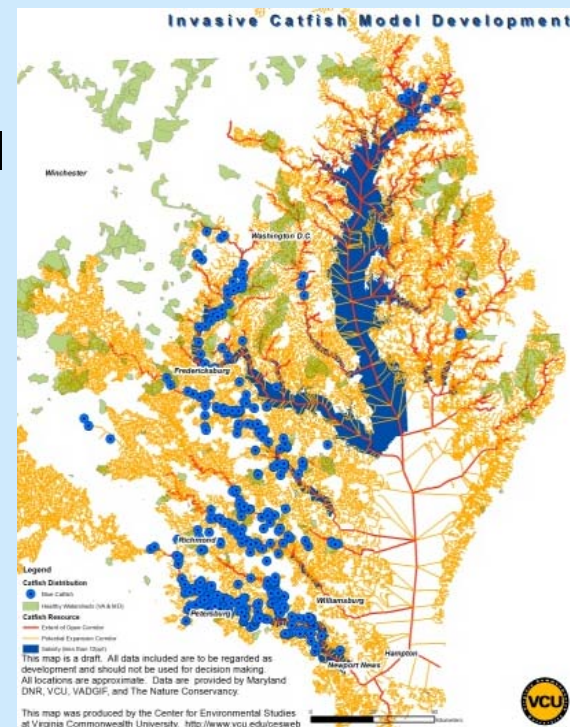


Blue Crab



Oyster

- Invasive Catfish Policy Adoption Statement
 - “...the potential risk posed by blue catfish and flathead catfish on native species warrants action to examine potential measures to reduce densities and limit range expansion, and to evaluate possible negative ecological impacts.”
 - Invasive Catfish Task Force will meet in October to discuss how to implement the policy
- CBSAC will meet in Oct. to begin development of male specific blue crab reference points for 2013 season
 - Female reference points already in use by managers

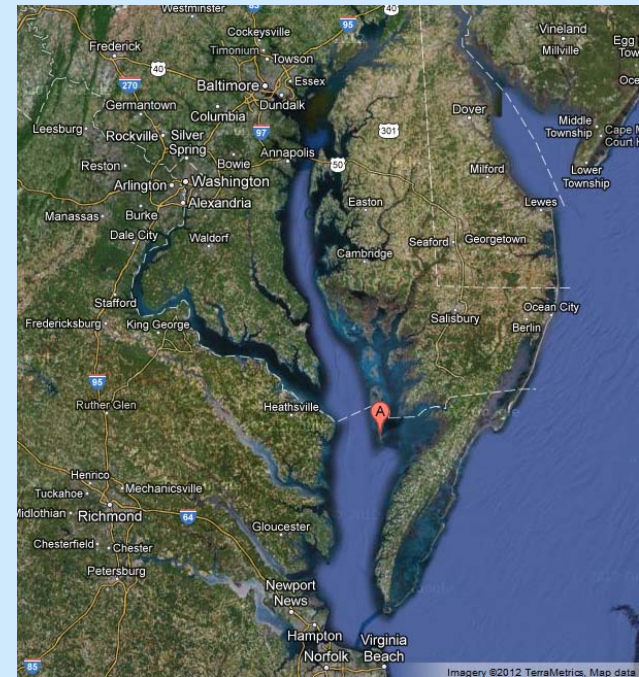


Fisheries GIT

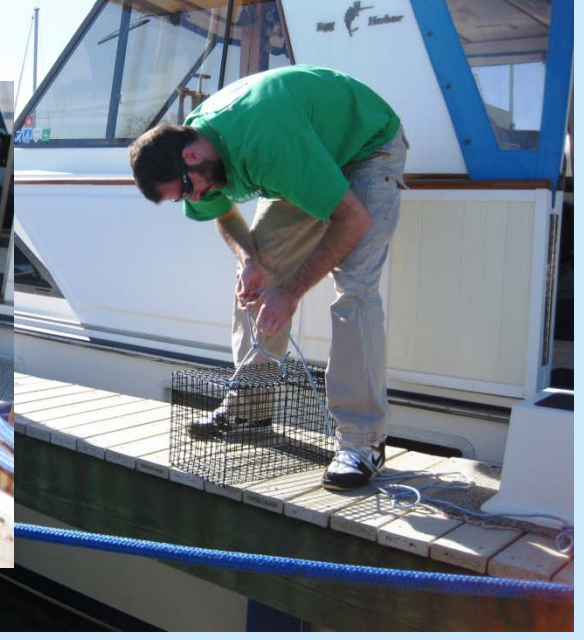
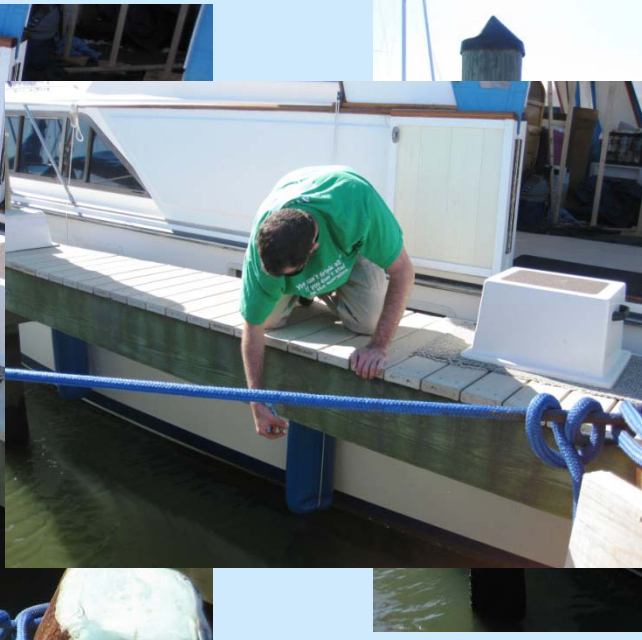
- New American Shad Indicator
 - No longer a shad fishery
 - Better reflect whole habitat restoration approaches rather than fisheries management



- Next full Fisheries GIT meeting:
 - December 6-8th
 - Port Isobel of Tangier Island
 - Increased stakeholder engagement
 - Commercial and recreational watermen

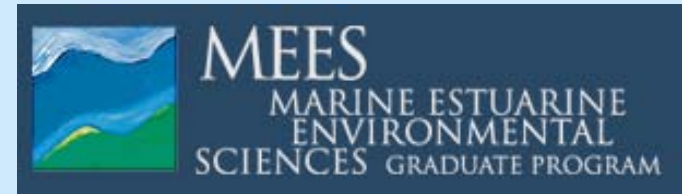


Independent Project

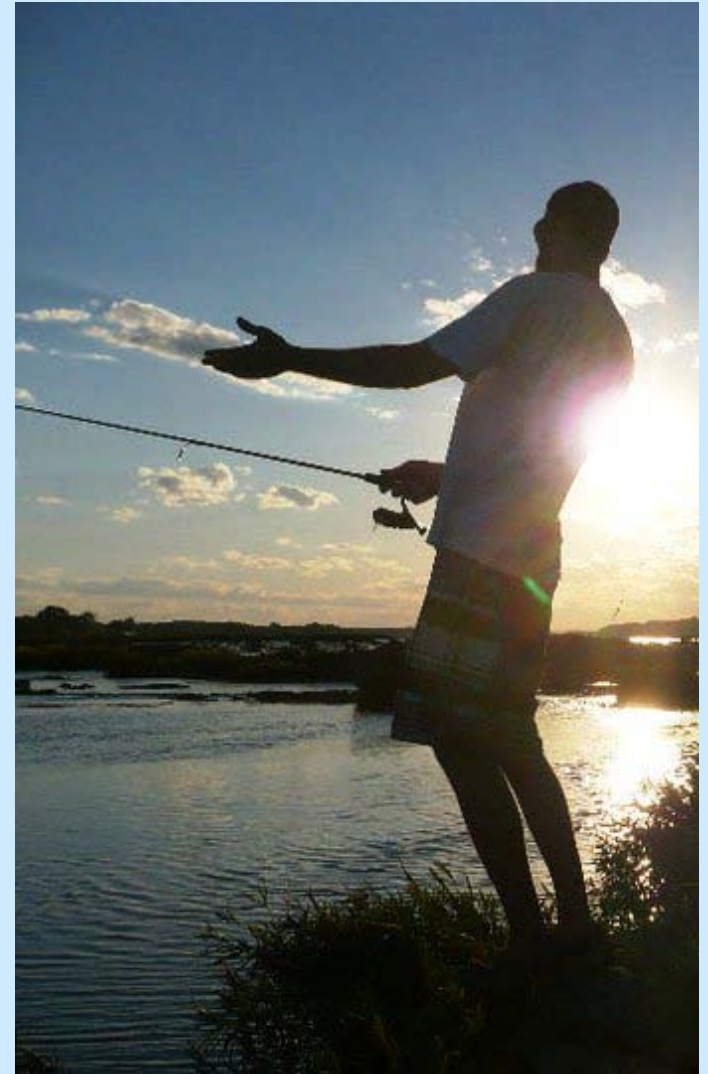


Future Plans

- Finished all prerequisites for graduate school
- Applied to UMD MEES to start in the Spring, 2013
 - Ecology
 - Fingers crossed



Questions?



Adam Davis
adavis@chesapeakebay.net
410-295-3159