



# CRC STAFFER UPDATE

FOSTERING CHESAPEAKE STEWARDSHIP GIT 5

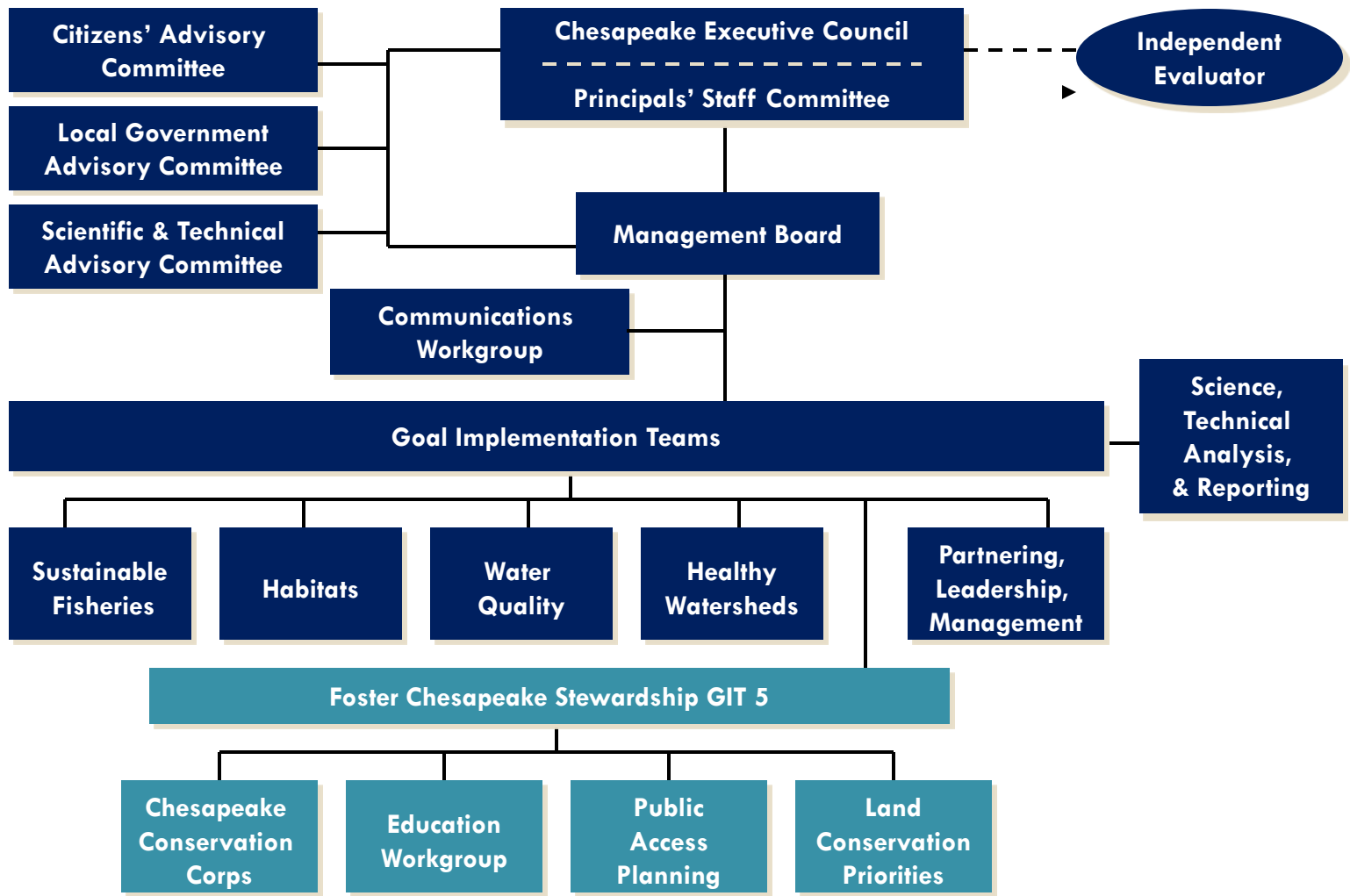
Sarah Brzezinski

# Personal Background



- Dickinson College
  - ▣ B.S. Environmental Science
  - ▣ Biology minor
- Research Experience
  - ▣ Rapid watershed assessment
  - ▣ Comparative distribution of gray whales
  - ▣ Sea turtle monitoring
  - ▣ Okapi activity budget





GIT Leadership		
Chair	John Maounis	National Park Service
Vice Chair	Kristin Saunders Evans	MD Dept of Natural Resources
Coordinator	Amy Handen	National Park Service
Staffer	Sarah Brzezinski	Chesapeake Research Consortium



# Chesapeake Conservation Corps Team



- Chesapeake Youth Corps Expansion Strategy:
  - ▣ Support existing programs
  - ▣ Develop a partner network
  - ▣ Deploy an intern team to support the partner network
  - ▣ Develop regional trainings
  - ▣ Develop collective metrics
  - ▣ Enhance communications



# Education Workgroup



- Mid-Atlantic Elementary and Secondary Environmental Literacy Strategy
-  Research-Based Best Practices for Environmental Education Workshop
- Expansion of [www.BayBackpack.com](http://www.BayBackpack.com)

MID-ATLANTIC ELEMENTARY AND SECONDARY  
ENVIRONMENTAL LITERACY STRATEGY



# Public Access Planning Team

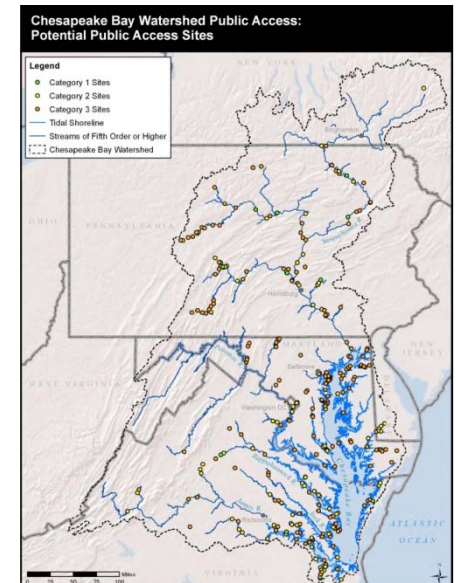
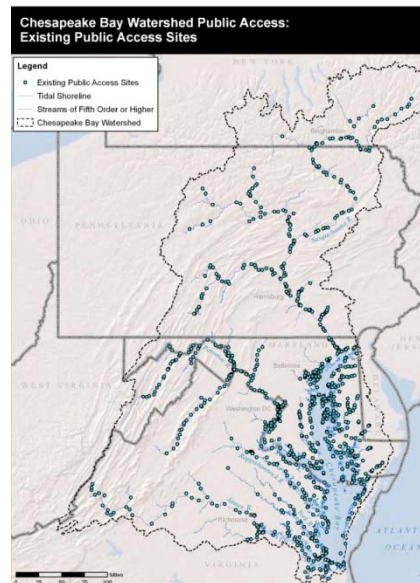
## DRAFT Chesapeake Bay Watershed Public Access Plan

July 2012

Prepared by the National Park Service in collaboration with the Commonwealths of Pennsylvania and Virginia, the States of Delaware, Maryland, New York, and West Virginia, and the District of Columbia.



- Chesapeake Bay Watershed Public Access Plan
  - 1,144 existing sites identified
  - 316 potential new sites identified





# Land Conservation Priorities Team



**Customize Theme** ✕

*This is for advanced users.*  
Warning: The map will refresh more slowly.



0 50 100  
Transparency 

Check the layers you wish to include.

**Conservation Priorities(theme)**

- Chesapeake: Cultural Asset Density (weighted)
- Chesapeake: Ecological Network
- Chesapeake: Forest Economics
- Chesapeake: Potential Prime Soils Actively Farmed
- Chesapeake: Water Quality Protection
- Critical Watersheds for Freshwater Species
- DE: Ecological Network
- DE: State Agricultural Districts
- MD: Agricultural Priority Preservation Areas
- MD: Rural Legacy Areas
- MD: Targeted Ecological Areas

# PD & Independent Project



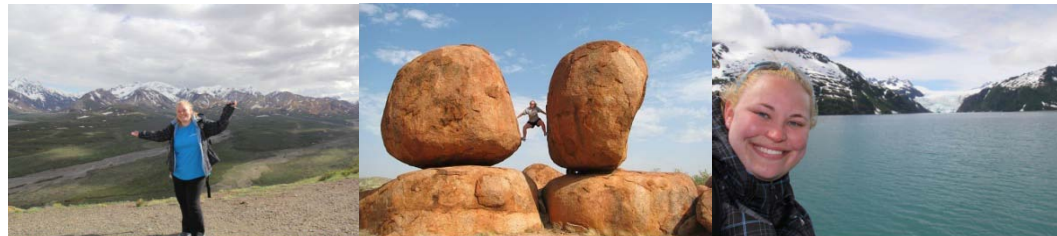
- Presentations at environmental education conferences & STEM days
- Content management of [www.BayBackpack.com](http://www.BayBackpack.com)
- Social media & online communications skills



# Future Plans & Interests



- Graduate School
  - ▣ Ecology, zoology, or marine science
  - ▣ Conservation of marine mammals, reptiles, birds
- Pursue a career that combines research and education
- Explore the world at home and abroad



# Questions?



**Sarah Brzezinski**

[Sarah\\_Brzezinski@partner.nps.gov](mailto:Sarah_Brzezinski@partner.nps.gov)

410-260-2494