

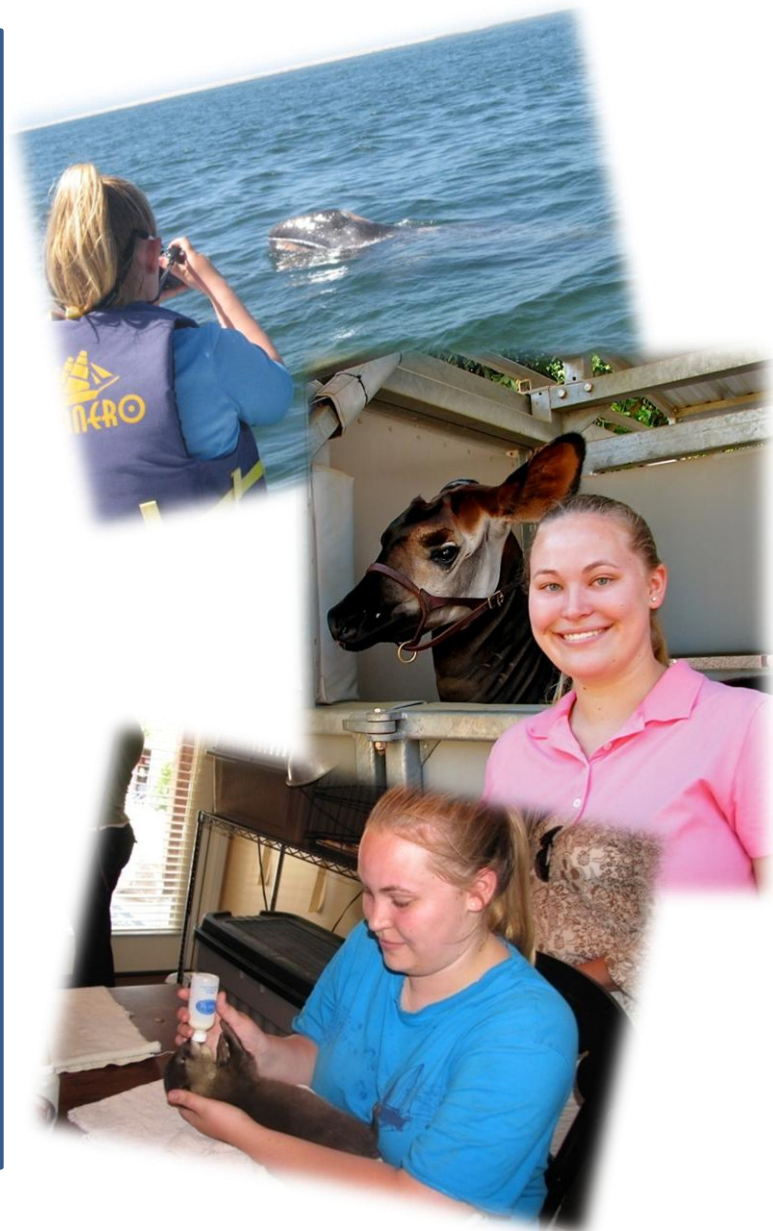


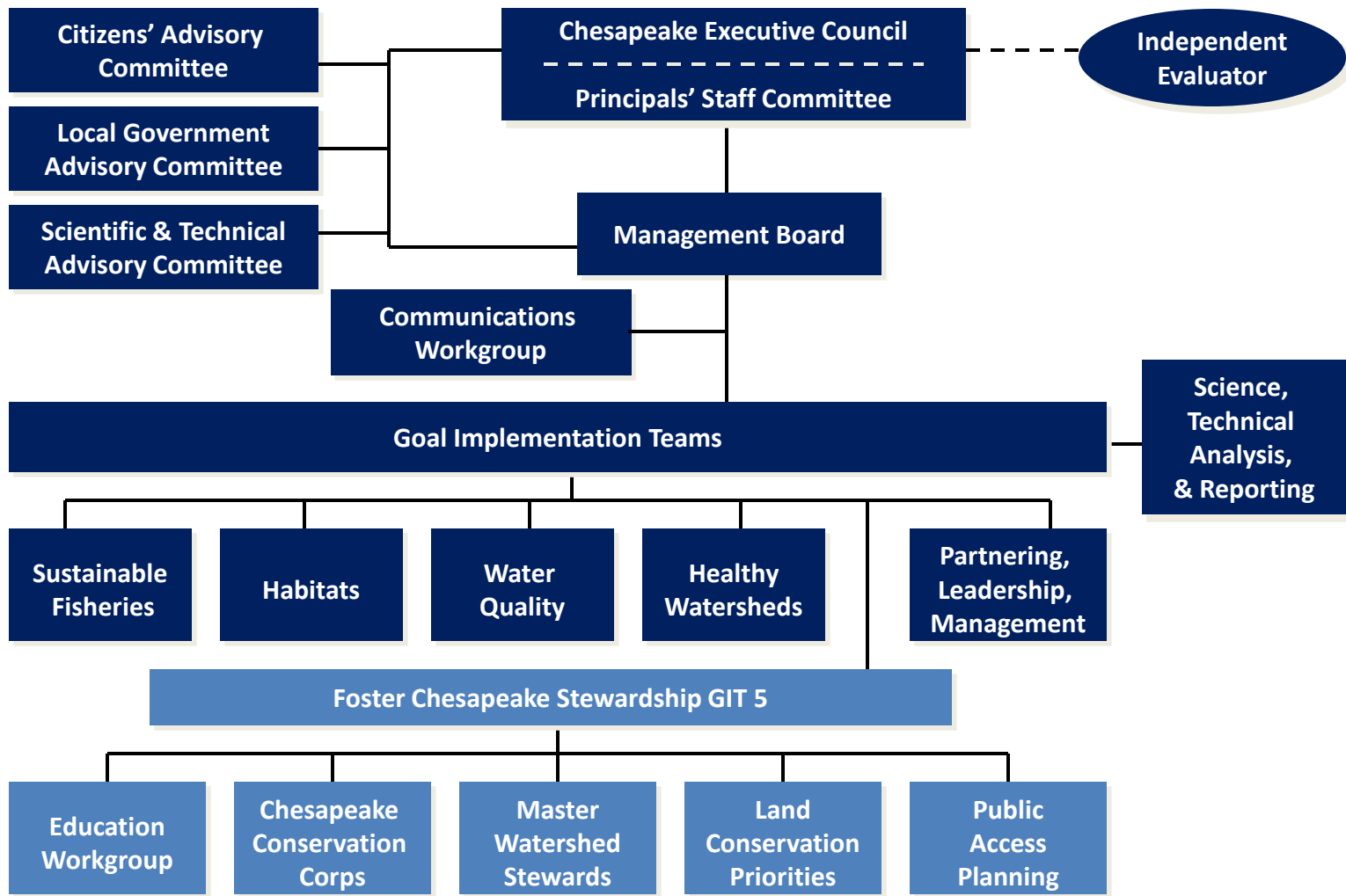
# CRC Staffer Update

Sarah Brzezinski  
Fostering Chesapeake  
Stewardship GIT 5

# Personal Background

- Dickinson College
  - B.S. Environmental Science
  - Biology minor
- Study Abroad at:
  - SFS Mexico
  - University of Queensland
- Employment:
  - SD Zoo Behavioral Biology
  - CBF Education Intern
  - Animal Hospital, Vet Clinics





GIT Leadership		
Chair	John Maounis	National Park Service
Vice Chair	Kristin Saunders Evans	MD Dept of Natural Resources
Coordinator	Amy Handen	National Park Service
Staffer	Sarah Brzezinski	Chesapeake Research Consortium



# Fostering Chesapeake Stewardship GIT 5



## Education Workgroup

- Environmental Literacy Strategy
- Environmental Literacy Summit
- MWEE Tracking
- New Metric Development
- Bay Backpack



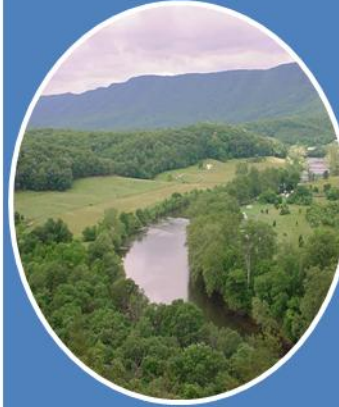
## Chesapeake Conservation Corps Action Team

- Funding Strategy
- New Metric Development
- Capacity Building



## Master Watershed Stewards Action Team

- Funding Strategy
- Capacity Building



## Land Conservation Priorities Action Team

- Priorities System Development
- Metric Tracking and Updates
- Landscape Survey



## Public Access Planning Action Team

- Public Access Strategy
- Public Access Guide
- Metric Tracking and Updates

**Expand Citizen Stewardship Supporting Strategy**

**Conserve Land and Increase Public Access Goal**



## Find a Teaching Resource!

Learn some creative ways to integrate the Chesapeake Bay and environmental issues into your classroom lessons. Search through the Bay Backpack's books, multimedia, curriculum guides, individual lesson plans and online data sources about the subjects you are teaching in class.

Check back often for new and innovative resources to help you teach environmental topics.

[Learn More](#) 

Find GREAT Teaching Resources



Learn About EXCITING Field Studies



Get Up To SPEED With Training



Read About AWESOME Funding Opportunities



## Mid-Atlantic Elementary and Secondary Environmental Literacy Strategy:

<http://chesapeakebay.noaa.gov/images/stories/hottopics/midatlraftelstrategy.pdf>

# Professional Development

- Environmental Ed
  - MAEOE Conference
  - Regional Roundtables
  - Mid-Atlantic Environmental Literacy Summit
- Biological Sciences
  - Marine Mammals Conf
  - MD Streams Symposium
  - Chesapeake Watershed Forum



# The Road Ahead

- Graduate School
  - Zoology, ecology, or marine biology
  - Conservation of marine mammals, reptiles, birds
- Pursue a career that combines research and education
- Explore the world at home and abroad



# Questions?

**Sarah Brzezinski**  
**410-260-2494**

**[Sarah\\_Brzezinski@partner.nps.gov](mailto:Sarah_Brzezinski@partner.nps.gov)**

**Smith Island**