



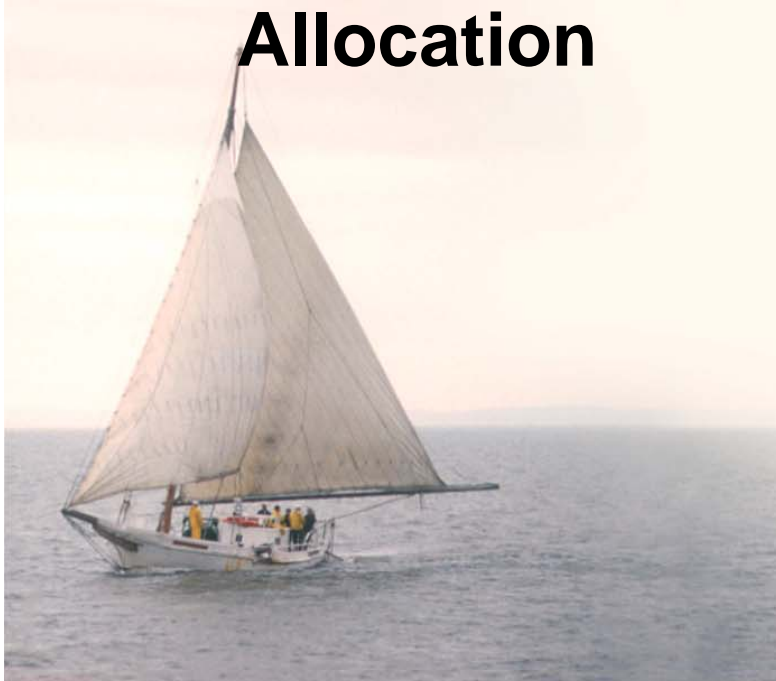
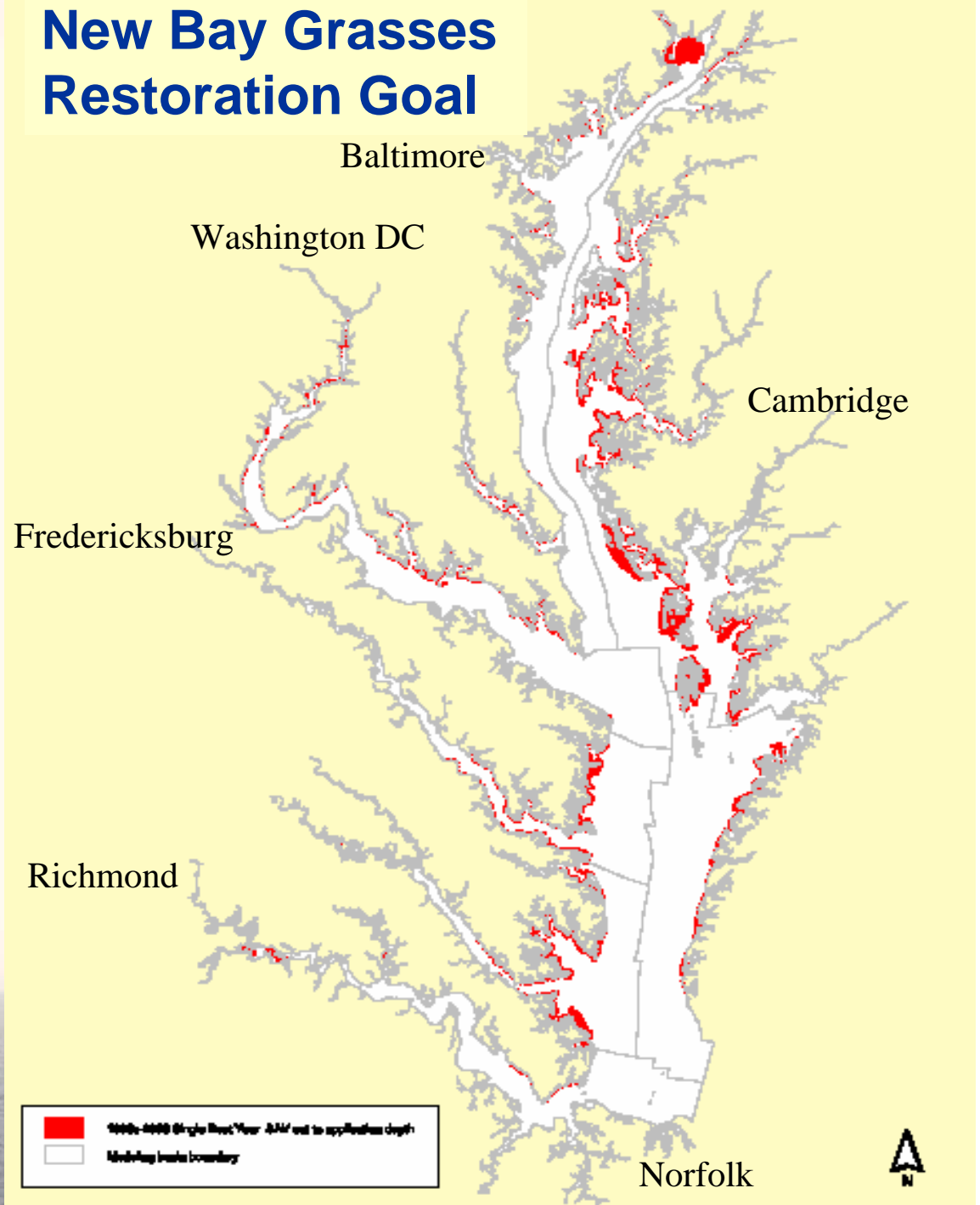
Chesapeake Bay Program
A Watershed Partnership

An Introduction to Sedimentsheds: Sediment and its Relationship to Chesapeake Bay Water Clarity

**The Sediment Workgroup
Chesapeake Bay Program Office
STAC Workshop
January 30-31, 2007**

**In 2003 Partners
formally adopted a
new 185,000 acre
SAV restoration
Goal & First Ever
Upland Sediment
Allocation**

New Bay Grasses Restoration Goal



2003 Sediment Allocation



- **Reduce upland sediment inputs from 5.83 to 4.15 MT/yr to help achieve water clarity and 185,000 acre SAV goal**
- **Did not allocate sediment caps for tidal erosion and resuspension because of many uncertainties**



Workshop Objectives



- 1. Provide a forum to share and discuss information on sediment, water clarity and SAV**



Workshop Objectives



- 1. Provide a forum to share and discuss information on sediment, water clarity and SAV**
- 2. Comment on our Sedimentsheds work**



Workshop Objectives



- 1. Forum to share and discuss information on sediment, water clarity and SAV**
- 2. Comment on our Sedimentsheds work**
- 3. Provide Sediment Workgroup with focused guidance and next steps**

